

ADP-TPM

For Commell's Motherboard

User's Manual

Edition 1.0
2014/10/20



Copyright

Copyright 2014, all rights reserved. This document is copyrighted and all rights are reserved. The information in this document is subject to change without prior notice to make improvements to the products.

This document contains proprietary information and protected by copyright. No part of this document may be reproduced, copied, or translated in any form or any means without prior written permission of the manufacturer.

All trademarks and/or registered trademarks contains in this document are property of their respective owners.

Disclaimer

The company shall not be liable for any incidental or consequential damages resulting from the performance or use of this product.

The company does not issue a warranty of any kind, express or implied, including without limitation implied warranties of merchantability or fitness for a particular purpose.

The company has the right to revise the manual or include changes in the specifications of the product described within it at any time without notice and without obligation to notify any person of such revision or changes.

Trademark

All trademarks are the property of their respective holders.

Any questions please visit our website at <http://www.commell.com.tw>

<TPM installaion process>

TPM supported operating systems have:

32-bit : WinXP SP3, WinVista SP2, Win7 SP1, WinServer2008 SP2, Win8

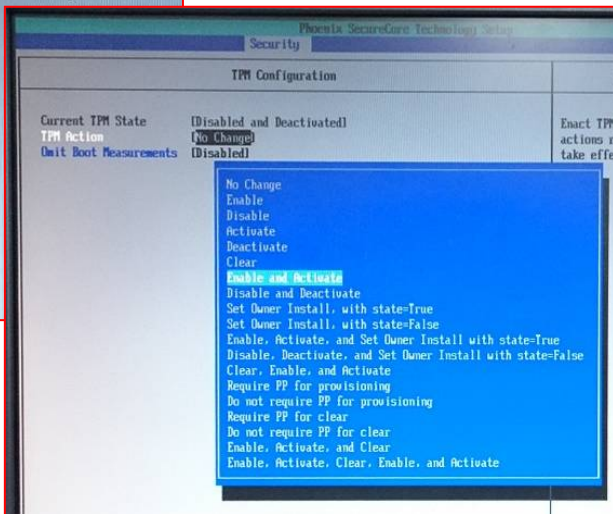
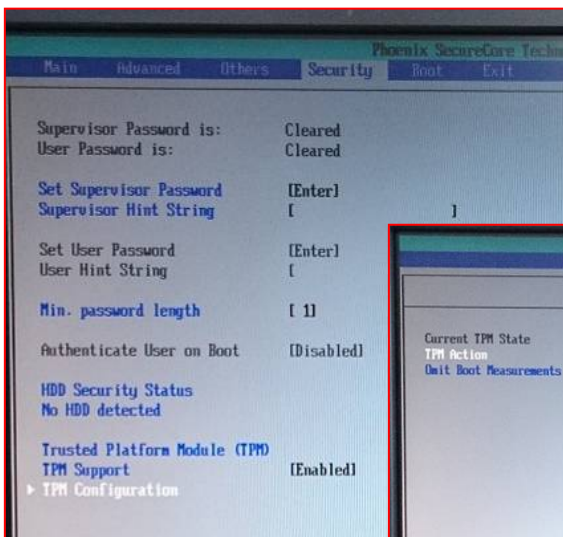
64-bit : WinXP SP2, WinVista SP2, Win7 SP1, WinServer2008 R2 SP1,

Win8, WinServer2012

1. You must install the TPM first, that can be setting the configuration in the BIOS.

The setting as shown below

[Security] → [TPM Configuration] → [TPM Action] → [Enable and Active]



Note : If you have previously used in other devices, you need to clear first.

[Security] → [TPM Configuration] → [TPM Action] → [Clear] → Reboot

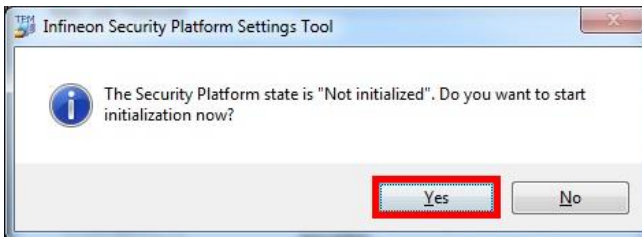
2. Entering the OS, then install the TPM driver.

Drivers are divided into 32-bit and 64-bit.

3. Starting the program and choose [User Settings].



4. A window will pop up, select [Yes].

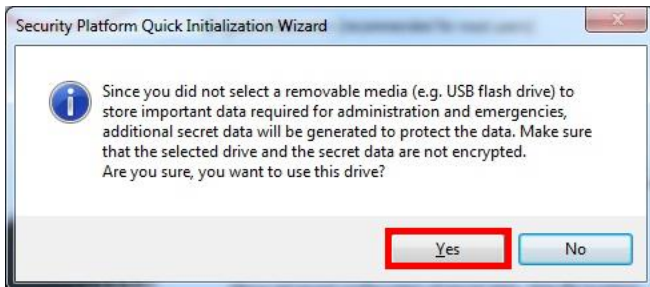


- In the drop-down menu, select the drive you want to use.

Then press next.



- A window will pop up, select [Yes].

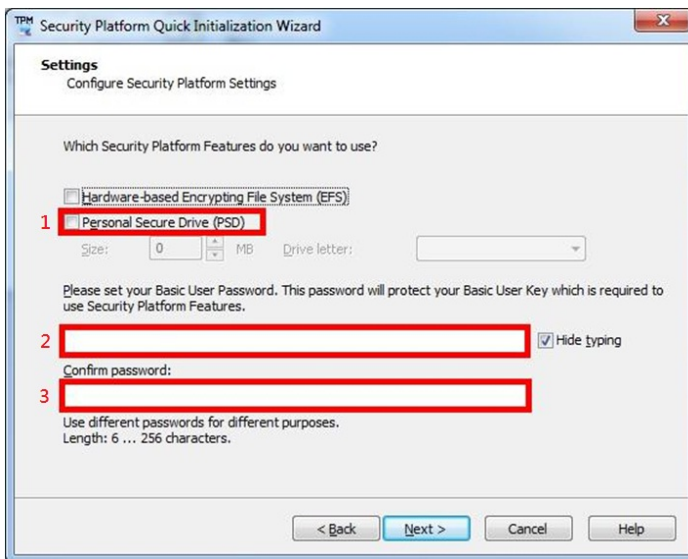


7. (1) Tick [Personal Secure Drive(PSD)].

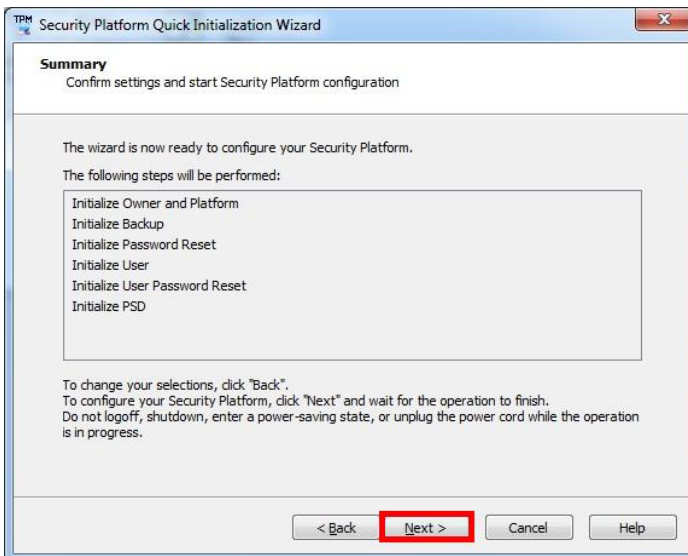
Then enter the [Size] and [Drive letter].

(2) & (3) Entering the Password and Confirm it.

Then press [Next].



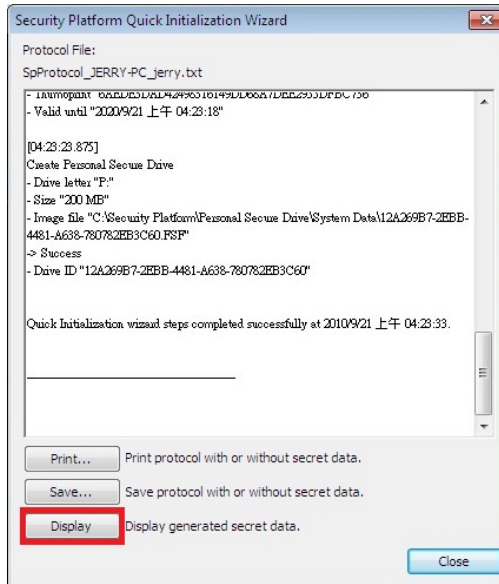
8. Press [Next].



- When Installation is complete, click [Details...] let the [Finish] button you can press.



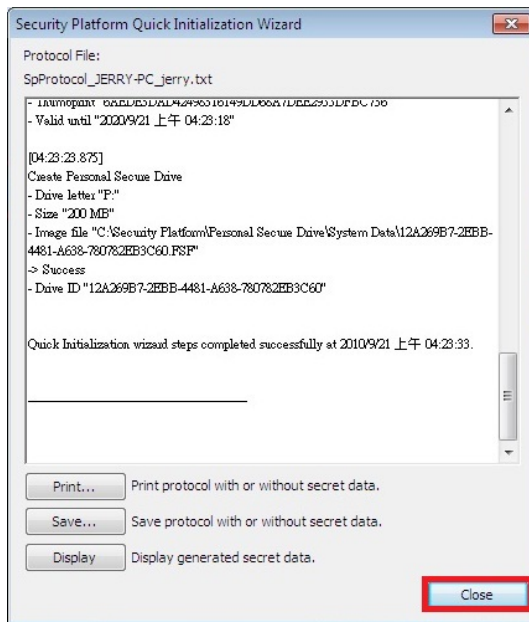
- Click [Display]



11. A window will appear, click [Close] to do next.



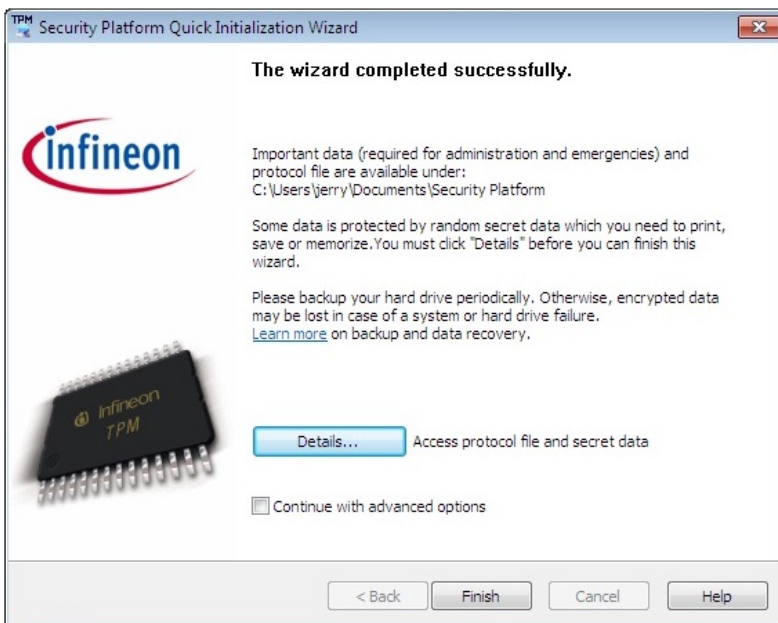
12. Click [Close] to do next.



13. A window will pop up, select [Yes].



14. The [Finish] you can press.



15. Reboot to enable the TPM functionality.

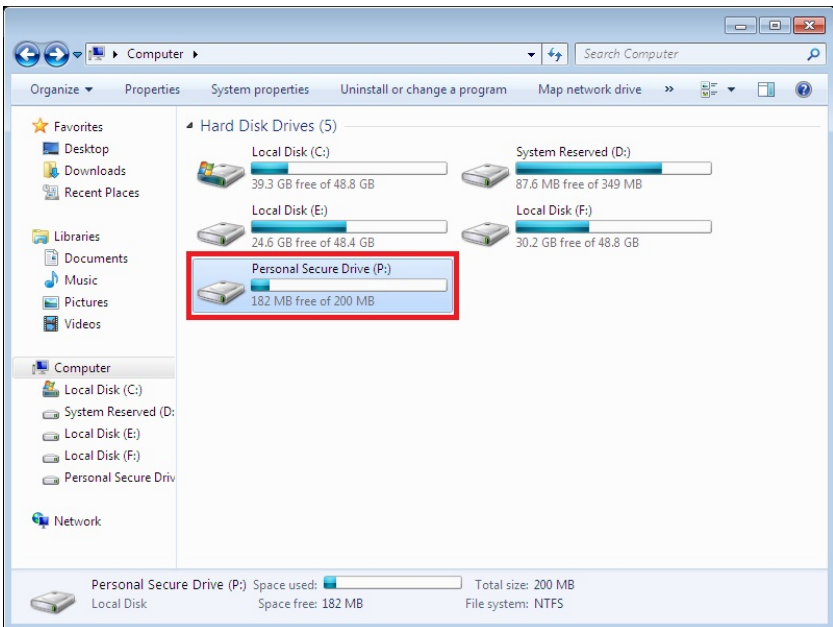
16. The desktop will appear a new icon. As shown below.



17. Open it and then enter your password.



18. You set the disk will appear in the "Computer".



Contact Information

Any advice or comment about our products and service, or anything we can help you please don't hesitate to contact with us. We will do our best to support you for your products, projects and business.

Taiwan Commate Computer Inc.

	19F., No.94, Sec. 1, Xintai 5th Rd., Xizhi Dist., New Taipei City
Address	22102, Taiwan
TEL	+886-2-26963909
FAX	+886-2-26963911
Website	http://www.commell.com.tw
E-Mail	info@commell.com.tw (General Information) tech@commell.com.tw (Technical Support)
Facebook	https://www.facebook.com/pages/Taiwan-Commate-Computer-Inc/547993955271899
Twitter	https://twitter.com/Taiwan_Commate

Commell is a brand name of Taiwan commate computer Inc.