

CMB-575

Mini Barebone system Intel High Performance Platform

Installation Guide

Edition 1.01

2025/02/13



Document Content:

- Packing List
- Product Specification
- Hardware Installation

Packing List:

CMB-575 Chassis x 1
(Including LE-575 Motherboard)

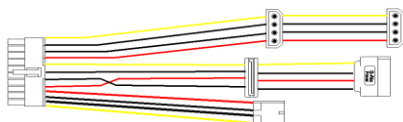


DSPD-080-12A 80W AC-DC Adapter x 1



Power Cord x 1

ATAPI Power Cord x1



SATA Cable x1 (12CM)



DVI module with DVI Cable x 1(Only LE-575XD)

Serial port Cable x 3

USB Cable x 1

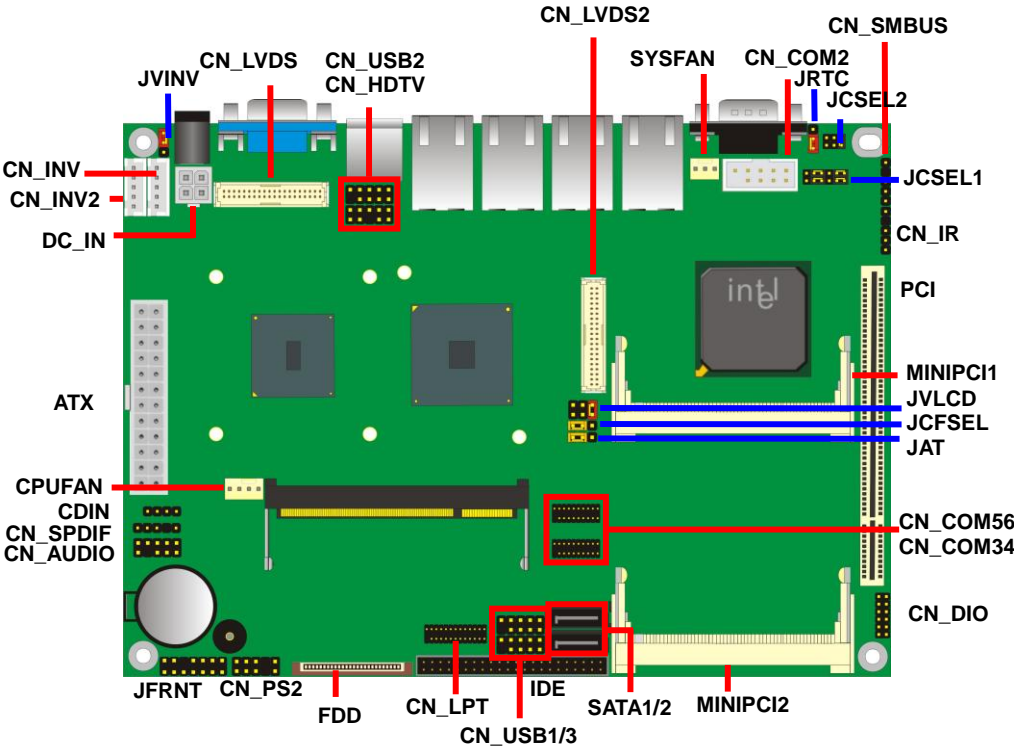
Audio Cable x1

Printer Cable x 1

CMB-575

Hardware Installation:

Motherboard placement



For the Components placement,it is available for LE-575

— For Connector — For Jumper

CMB-575X

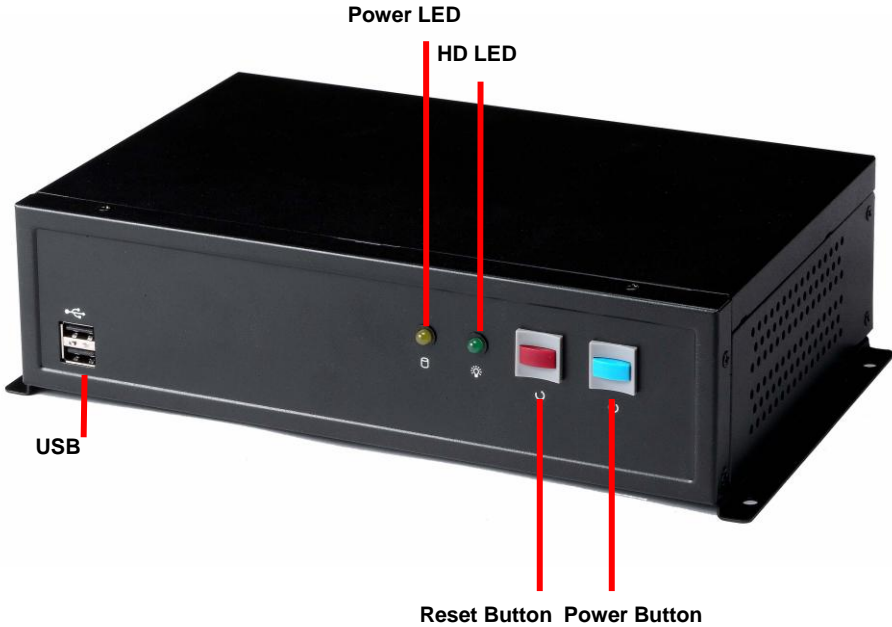


CMB-575XD

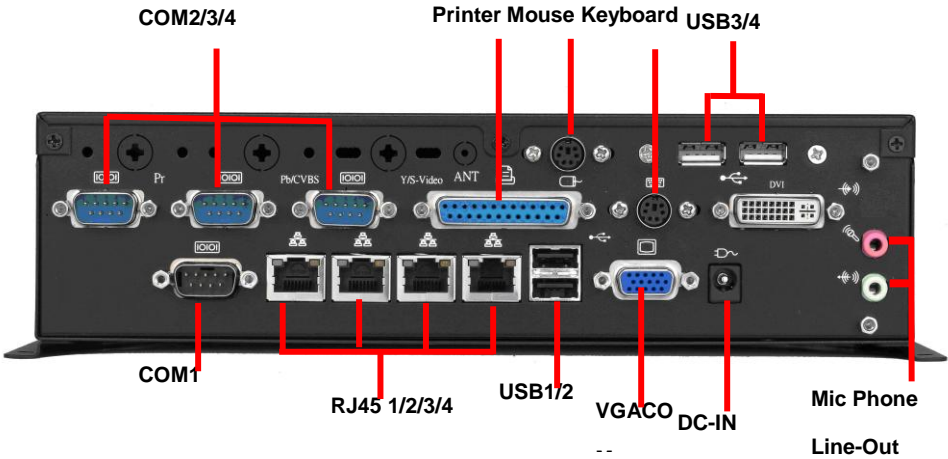


I/O panel:

Front:



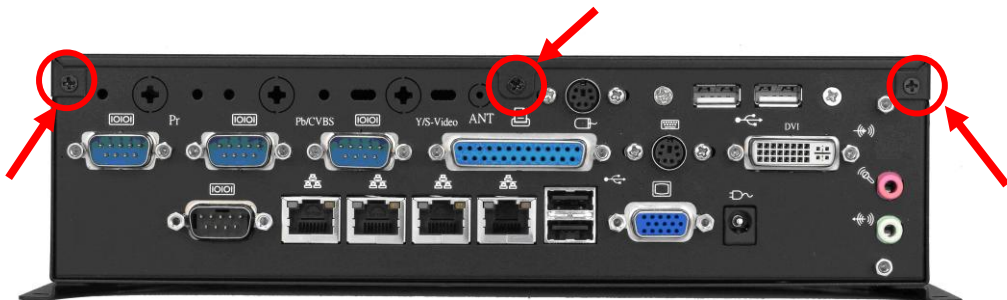
Rear:



Chassis Setup procedure:

1. Screw off as indication of the picture below.

Rear:



Top:



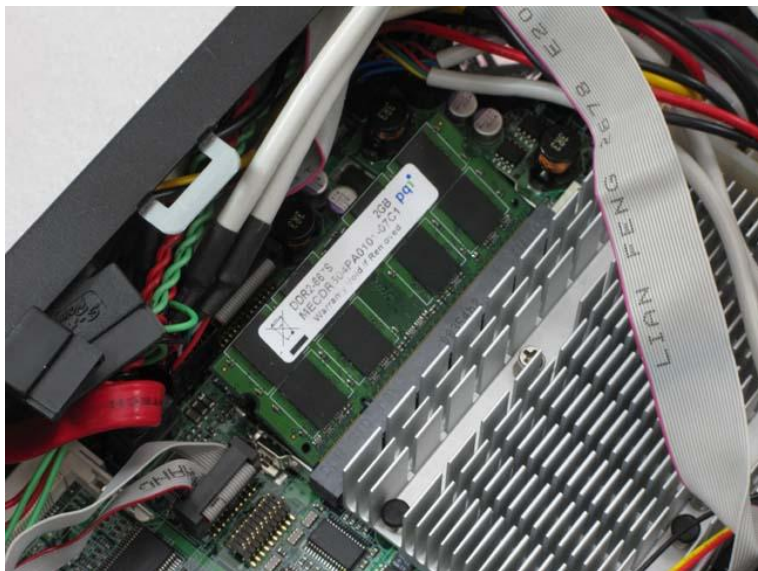
2. Push the Chassis shield towards the back then open it.



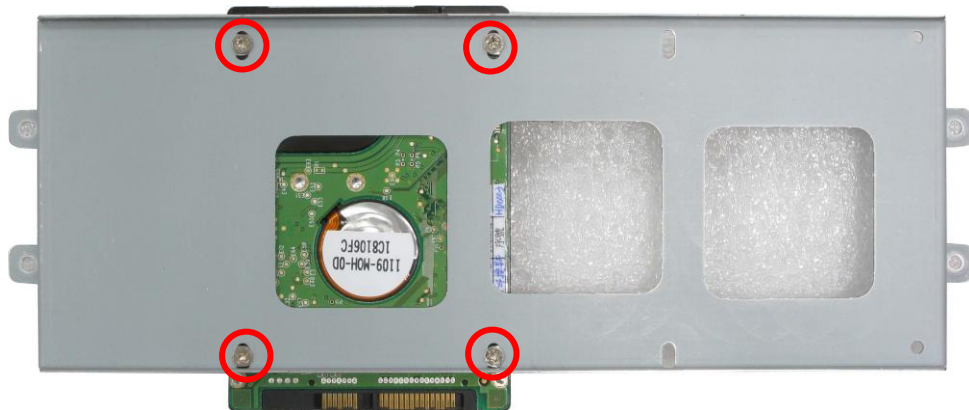


4. Insert the DDRII SO-DIMM module into the socket at 45 degree.

Press down the module with a click sound.



5. Put on HDD driver into HDD holder then turn the HDD drive screws to tighten.(If you don't have HDD drive please direct to step 6.)



6. Screw on as indication of the picture below Turn the screws.



7. Push the Chassis shield towards the back then open it.



A top-down view of the black device. The top surface is a large, flat, black rectangle. The front edge shows a USB port on the left, two green indicator lights, a red emergency stop button, and a blue power button on the right. Two screws on the front edge are circled in red, with red arrows pointing to them from below.

9. Finish.



CF card Setup Procedure:

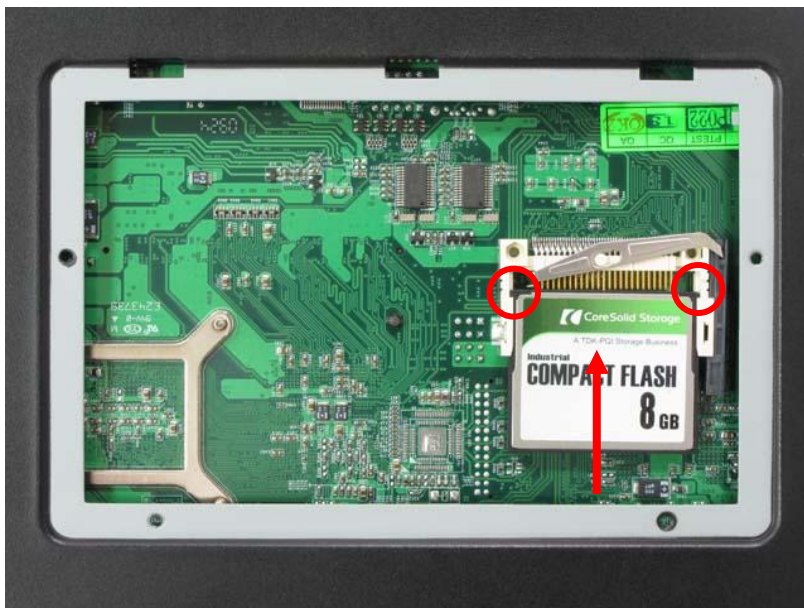
1. Screw off as indication of the picture below.



2. Open it and you shall see CF card socket. As shown in the illustration, face the label side toward you and insert the end with the small holes into the Motherboard.



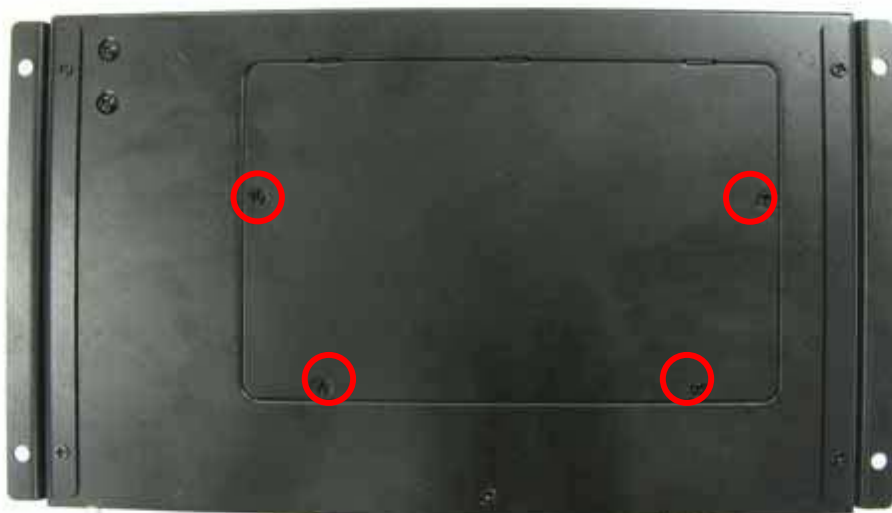
3. Follow the foolproof design then insert the CF card.



4. Check connected well



5. Close it shield and turn screw to tighten.

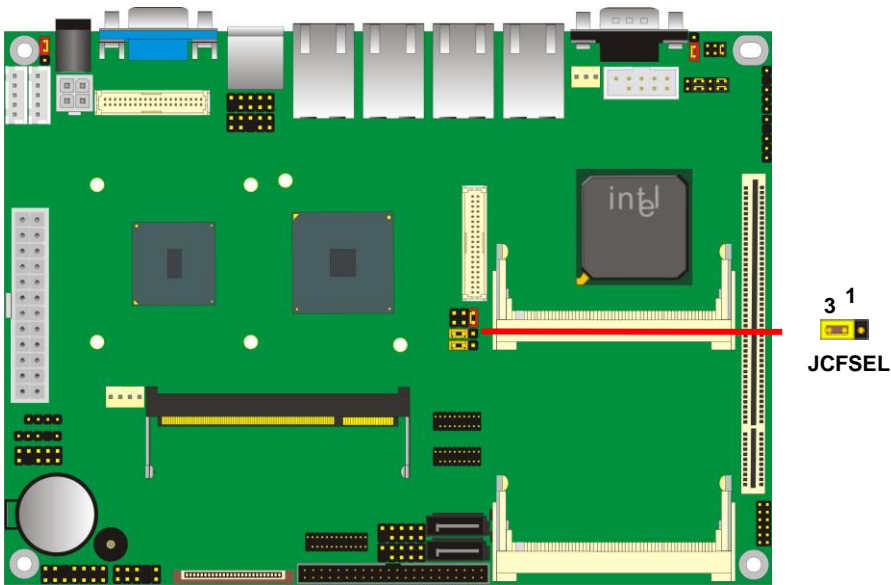


Addendum Notice

Please leave the **JCFSEL** as **1-2** for Master mode, and set the IDE2 HDD as Slave mode if you need to use the CF card.

Jumper: **JCFSEL**
Type: onboard 3-pin header

1-2	Master
2-3	Slave
Default setting	



Contact Information

Any advice or comment about our products and service, or anything we can help you please don't hesitate to contact with us. We will do our best to support you for your products, projects and business

Taiwan Commate Computer Inc.

Address	19F, No. 94, Sec. 1, Xintai 5th Rd., Xizhi Dist New Taipei City, Taiwan
TEL	+886-2-26963909
FAX	+886-2-26963911
Website	http://www.commell.com.tw
E-Mail	info@commell.com.tw (General Information) tech@commell.com.tw (Technical Support)
Facebook	https://www.facebook.com/pages/Taiwan-Commate-Computer-Inc/547993955271899
Twitter	https://twitter.com/Taiwan_Commate

Commell is a brand name of Taiwan Commate Computer Inc.