

CMB-677DC

Mini Barebone system
Intel High Performance Platform
Installation Guide
Edition 1.01
2025/02/03



Document Content:

- Packing List
- Product Specification
- Hardware Installation

Packing List:

CMB-677DC Chassis x 1
(Including LV-677DC Motherboard)



DSPD-080-12A 80W AC-DC Adapter x 1



Power Cord x 1

CPU Cooler x 1



ATAPI Power Cord x1



44-pin to 44-pin ATA33 IDE Cable x1 (27CM)

SATA Cable x1

YPbPr Cable x1

Composite Cable x 1

Serial port Cable x 1

PCIE-SDVOD Card x1

IDE to Slim CD-ROM Module x1

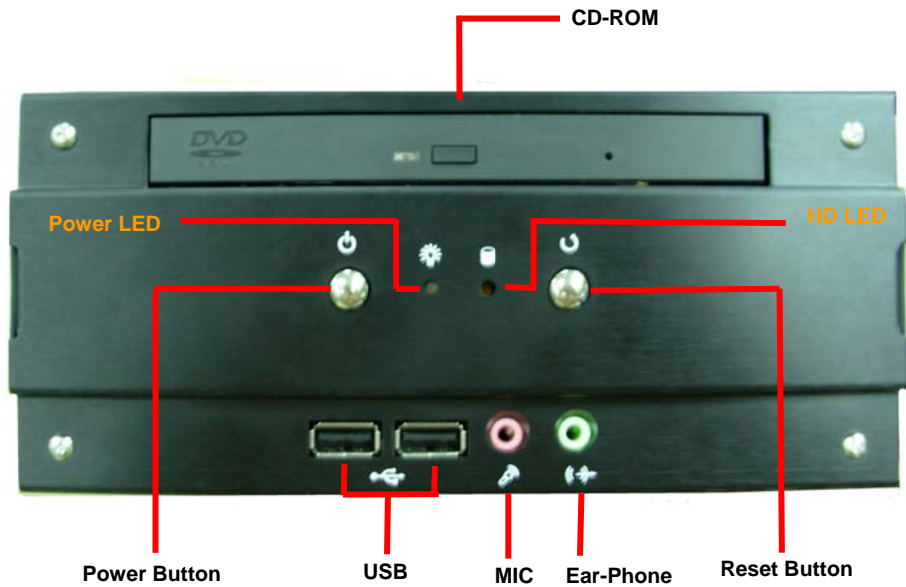
Motherboard placement



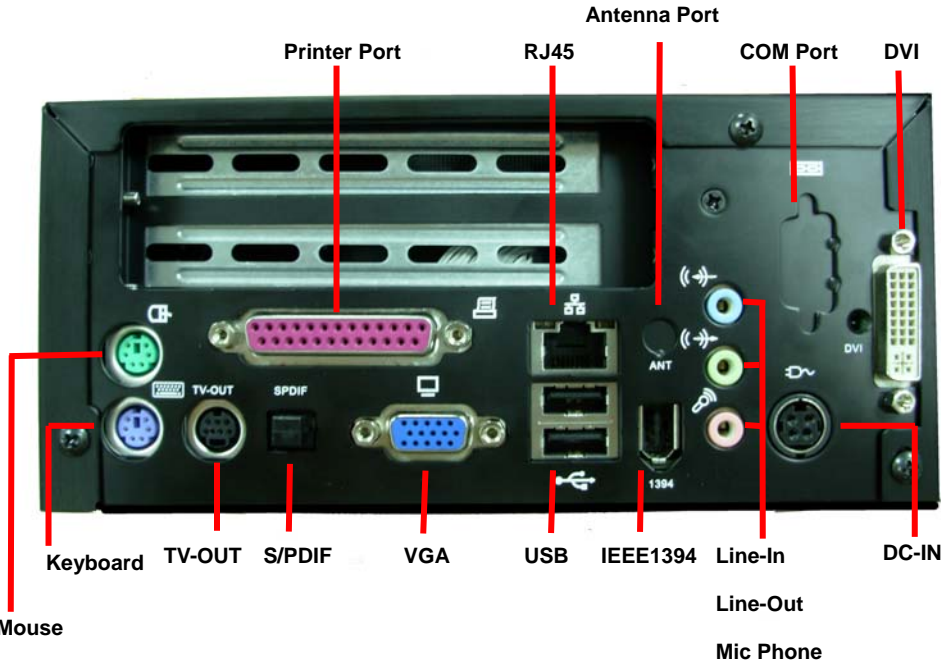
For Jumper

I/O panel:

Front:



Rear:

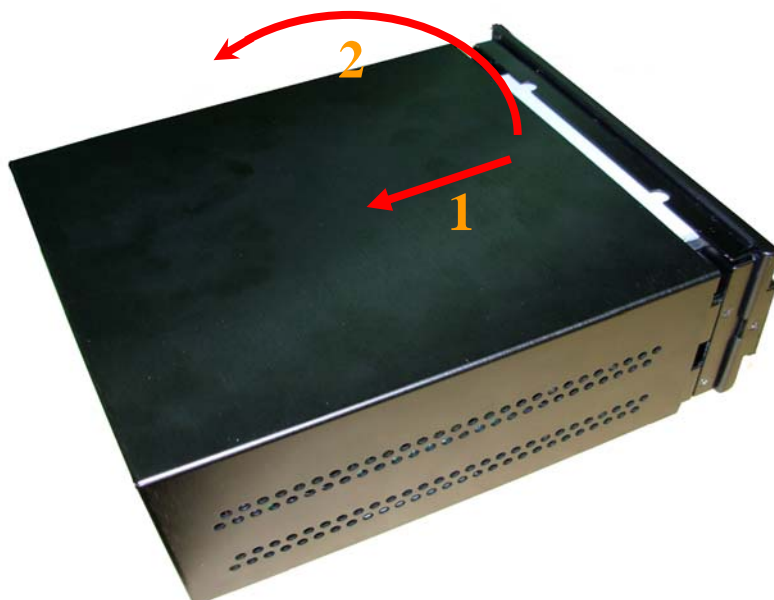


- **Chassis Setup procedure:**

1. Turn the chassis screws.



2. Push the Chassis shield towards the back then open it .



3. Turn the screws and refer the picture A , B and C

(A)



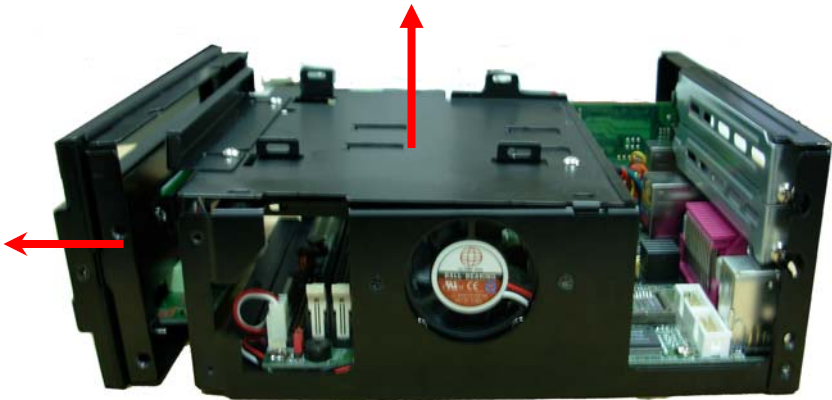
(B)



(C)

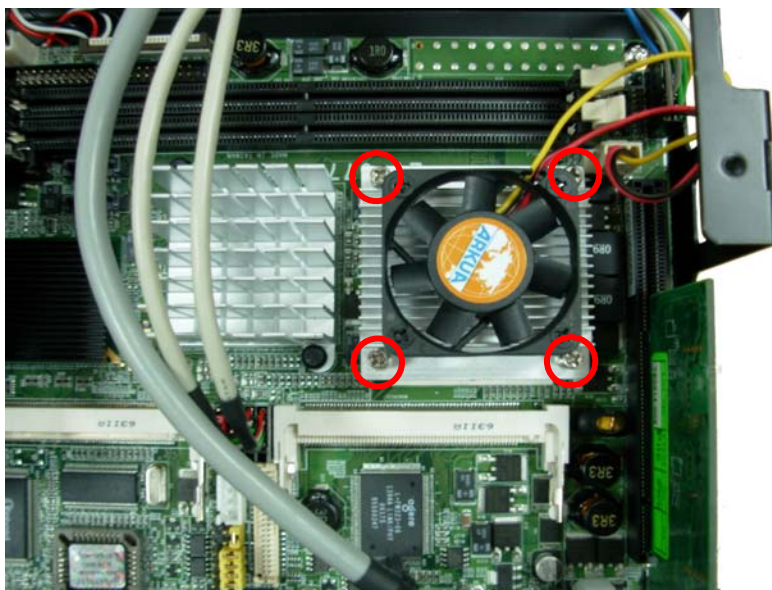


4. Push the front panel towards the front then take the CD-ROM holder off.

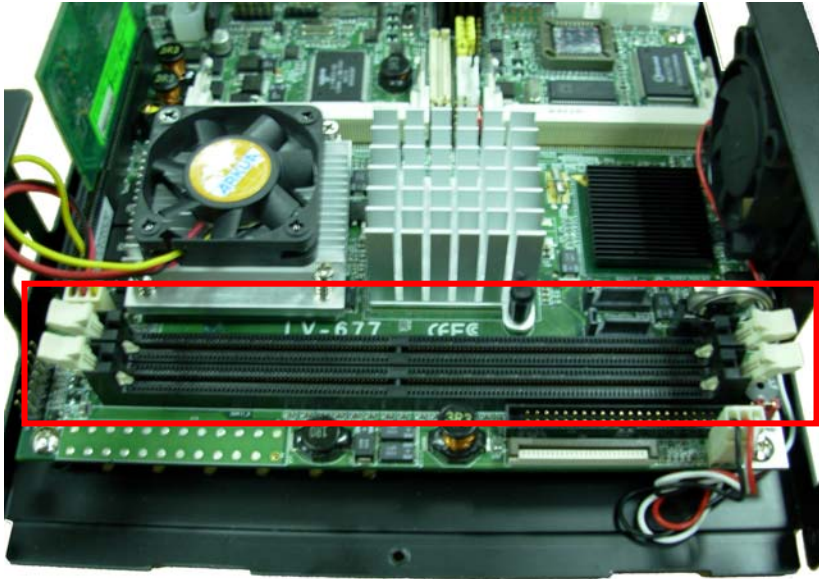


5. Turn the CPU cooler screws and then refer the motherboard manual page.16 to install the CPU.

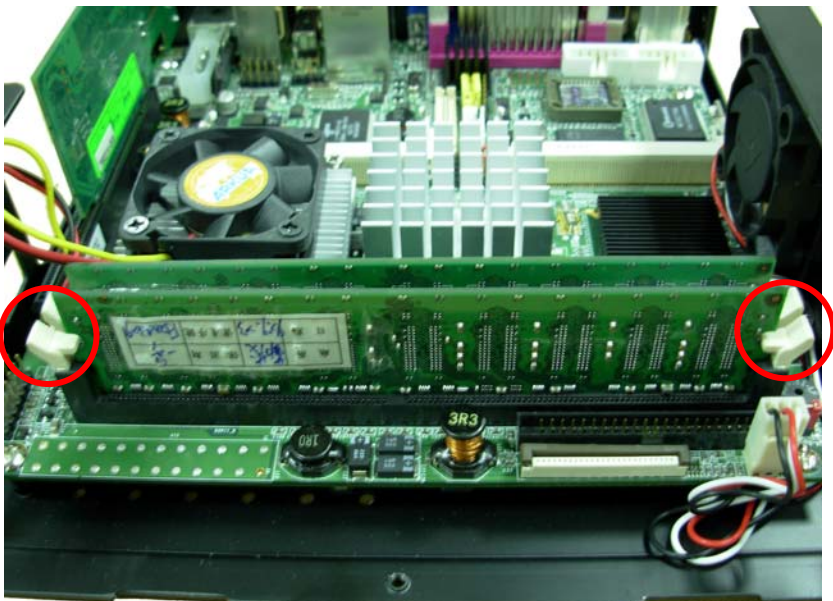
(After installing CPU, please turn the CPU FAN screws to tighten.)



6. Open the Dimm holder then check the pin number to match the socket side well before installing memory module.



7. Press down the memory module then check dimm holder hook well.



- 8. Find out the HD holder to install HD driver, it is under backside of the CD-ROM holder.**



- 9. Put on HD driver into HD holder then turn the HD drive screws to tighten. (If you don't have HD drive please direct to step.11)**



10. Connect IDE or SATA cable from motherboard to the HD drive.



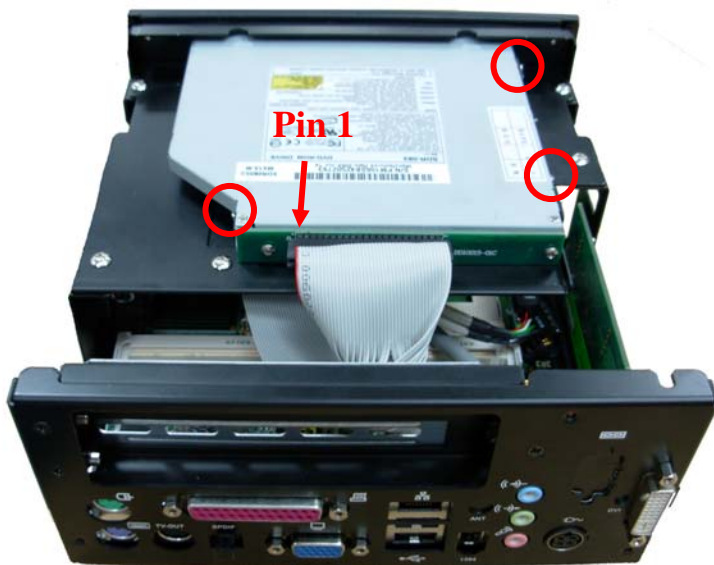
11. After install HD driver, Turn the CD-ROM holder and front panel screw well. (If you don't have CD-ROM driver please direct to step.14)



12. Take CD-ROM shield off . And insert CD-ROM drive from front panel to the CD-ROM holder.



13. Turn the CD-ROM driver screws and IDE cable connects well.



14. Turn the chassis shield screws to tighten well.



- **CF card Setup Procedure:**

1. Turn the CF chassis shield screw.



2. Take CF chassis shield off.



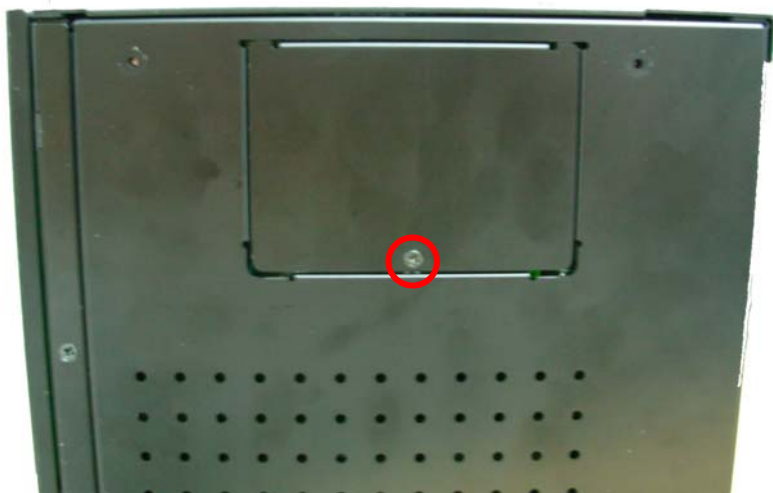
3. Follow the Idiot-proof design then insert the CF card.



4. Check connected well



5. Close CF chassis shield and turn screw to tighten.

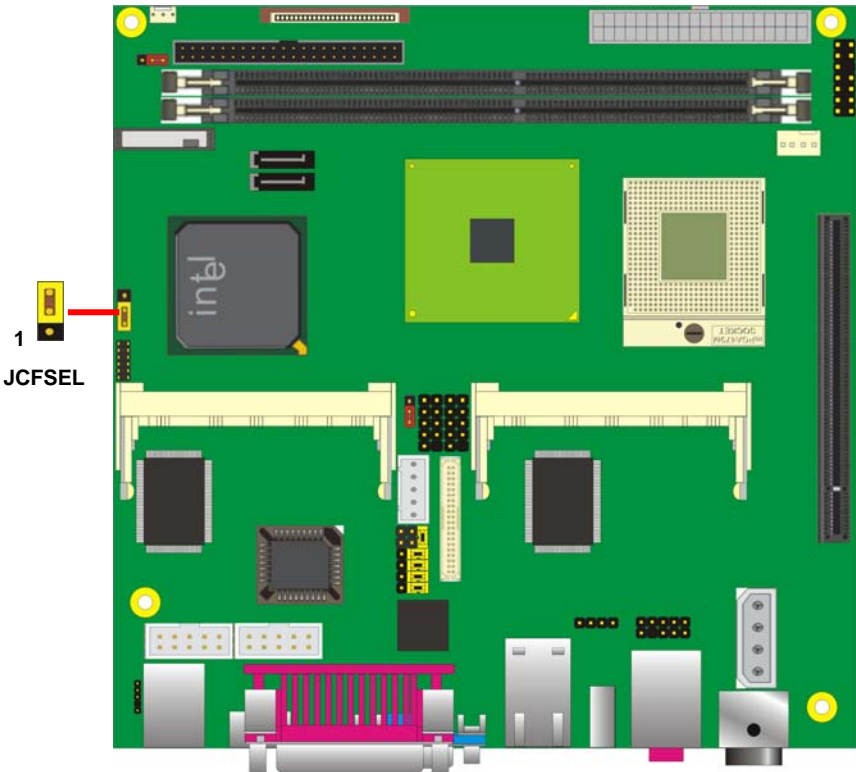


Addendum Notice

Please leave the **JCFSEL** as 1-2 for Master mode, and set the IDE2 HDD as Slave mode if you need to use the CF card.

Jumper: **JCFSEL**
Type: onboard 3-pin header

JCFSEL	Mode
1-2	Master
2-3	Slave
Default setting	



Contact Information

Any advice or comment about our products and service, or anything we can help you please don't hesitate to contact with us. We will do our best to support you for your products, projects and business

Taiwan Commate Computer Inc.

Address	19F, No. 94, Sec. 1, Xintai 5th Rd., Xizhi Dist New Taipei City, Taiwan
TEL	+886-2-26963909
FAX	+886-2-26963911
Website	http://www.commell.com.tw
E-Mail	info@commell.com.tw (General Information) tech@commell.com.tw (Technical Support)
Facebook	https://www.facebook.com/pages/Taiwan-Commate-Computer-Inc/547993955271899
Twitter	https://twitter.com/Taiwan_Commamate

Commell is a brand name of Taiwan Commate Computer Inc.