

MPX-954E

User's Manual

Edition 1.2
2013/04/17



Copyright

Copyright 2010 all rights reserved. This document is copyrighted and all rights are reserved. The information in this document is subject to change without prior notice to make improvements to the products.

This document contains proprietary information and protected by copyright. No part of this document may be reproduced, copied, or translated in any form or any means without prior written permission of the manufacturer.

All trademarks and/or registered trademarks contains in this document are property of their respective owners.

Disclaimer

The company shall not be liable for any incidental or consequential damages resulting from the performance or use of this product.

The company does not issue a warranty of any kind, express or implied, including without limitation implied warranties of merchantability or fitness for a particular purpose.

The company has the right to revise the manual or include changes in the specifications of the product described within it at any time without notice and without obligation to notify any person of such revision or changes.

Trademark

All trademarks are the property of their respective holders.

Any questions please visit our website at <http://www.commell.com.tw>.

Packing List:

Hardware:

MPX-954 PCI Express mini Card x1

Cable Kit:



RS232/RS422/RS485 Cable x 1
(OALES-BKU3-H14)

CD Content:

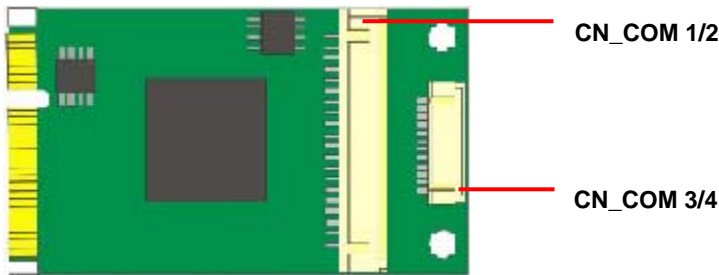
Driver & User's Manual

Product Specification

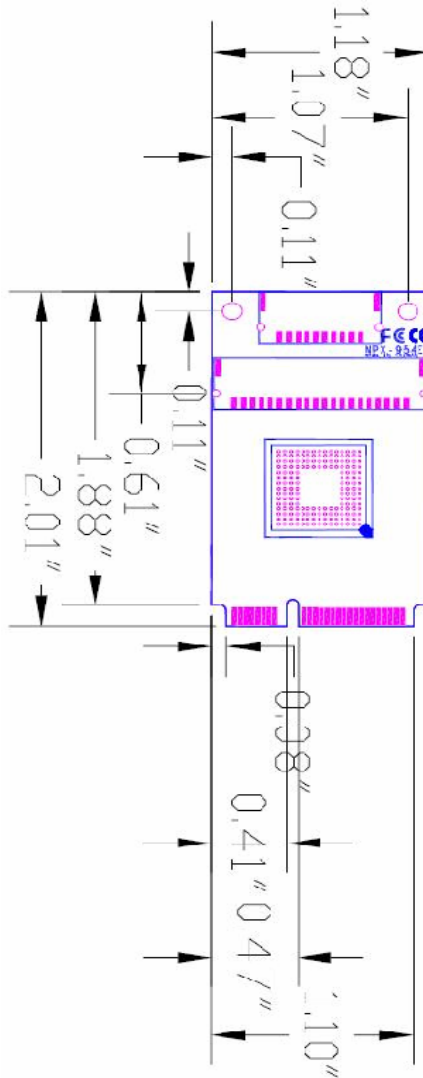
General Specification	
Form Factor	PCI Express mini card
Chipset	ICOXPCIe954
Internal Port	2 x RS232 , 2 x RS422/RS485
Dimensions (W x D)	30.00mm x 50.95mm

Component Placement

MPX-954E:



Mechanical Drawing



Unit: inch

Connector Reference

Connector: CN_COM1/2(RS232)

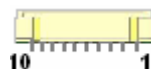
Type: H14H-20PIN



Pin	Description	Pin	Description
1	DCD_E0	2	SIN_E0
3	SOUT_E0	4	DTR_E0
5	GND	6	DSR_E0
7	RTS_E0	8	CTS_E0
9	RI_E0	10	NC
11	DCD_E1	12	SIN_E1
13	SOUT_E1	14	DTR_E1
15	GND	16	DSR_E1
17	RTS_E1	18	CTS_E1
19	RI_E1	20	NC

Connector: CN_COM3/4(RS422/485)

Type: H14H-10PIN
(RS-422)



Pin	Description	Pin	Description
1	RXDC1-	2	RXDC1+
3	TXDC1+	4	TXDC1-
5	GND	6	RXDC2-
7	RXDC2+	8	TXDC2+
9	TXDC2-	10	GND

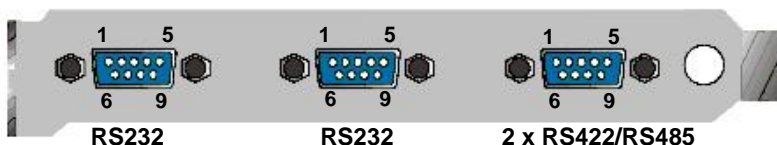
(RS-485)

Com3 RTX- Data- : short Pin1& Pin4

Com3 RTX+ Data+ : short Pin2& Pin3

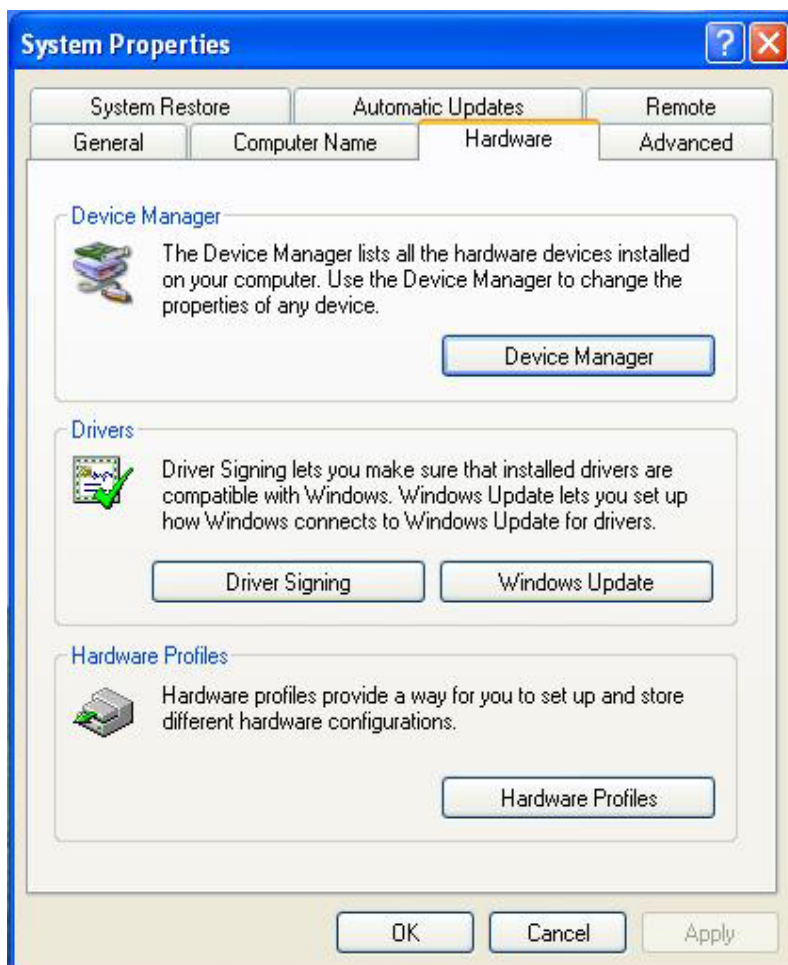
Com4 RTX- Data- : short Pin6& Pin9

Com4 RTX+ Data+ : short Pin7& Pin8

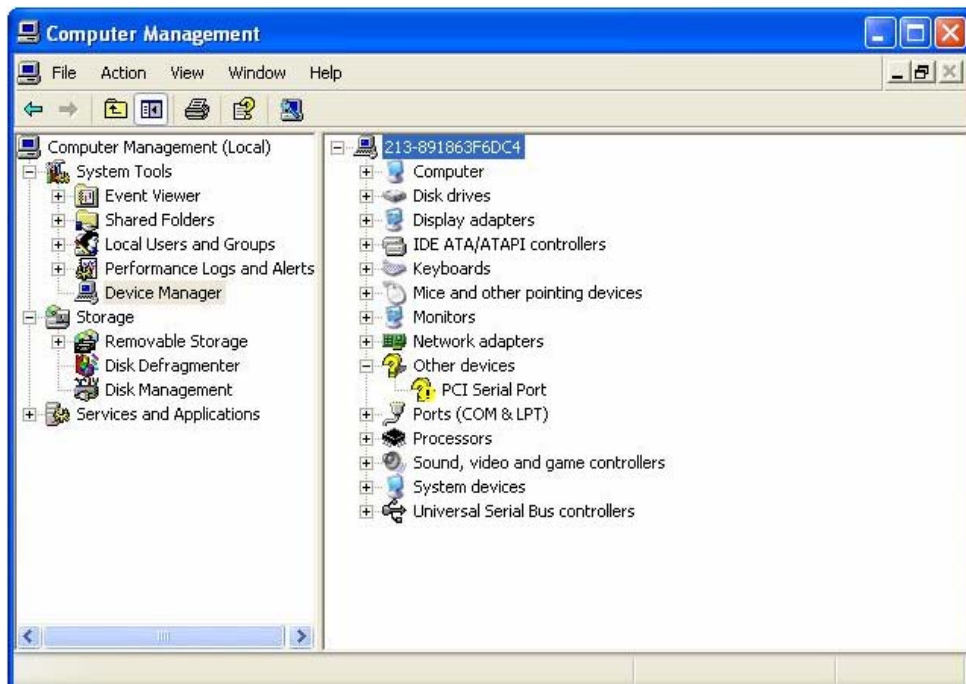


Driver Setting

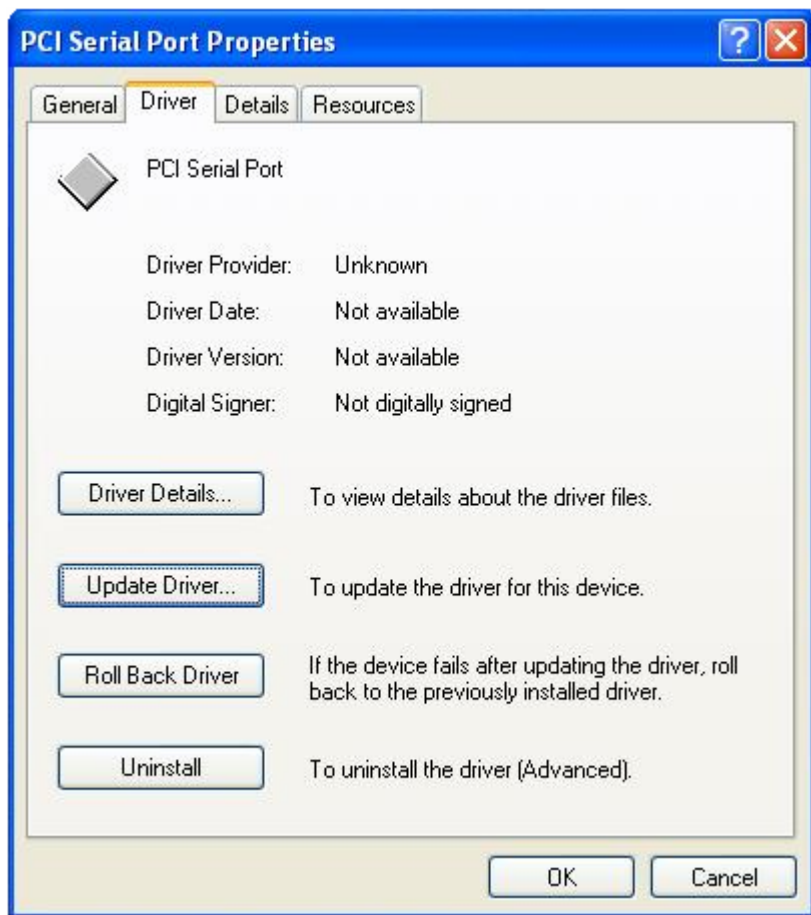
1. Copy the CD Driver folder to disk, Ex: C:\ , D:\ ...
2. Please choose “**Device Manager**”



3. You can see other devices "PCI Serial Port"



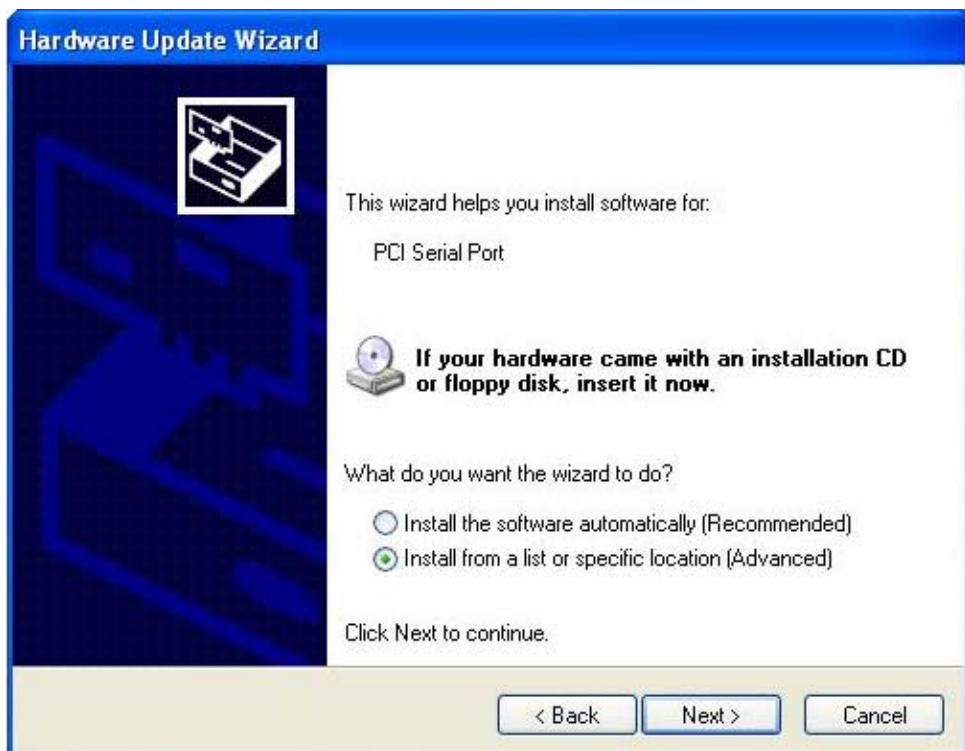
4. Please choose “**Other PCI Bridge Device**” then press
Update Driver



5. Please choose "NO, not this time"



6. Install software for "PCI Serial Port" Please choose "Install from a list or specific location"



7. Please choose “**Search for the best driver in these location**”

Check “**Include this location in the search**” then press

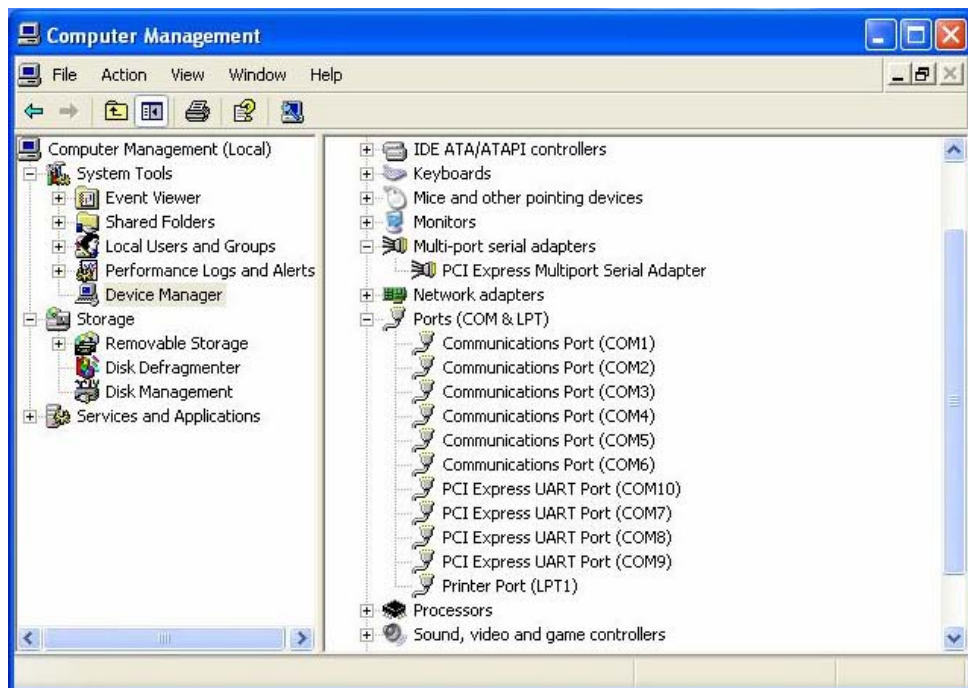
“**D:\Driver\MPX-954\MPX-954\x86**”



8. Completing the hardware update wizard



9. Computer Management



Contact Information

Any advice or comment about our products and service, or anything we can help you please don't hesitate to contact with us. We will do our best to support you for your products, projects and business.

Taiwan Commate Computer Inc.

Address	19F., No.94, Sec. 1, Xintai 5th Rd., Xizhi Dist., New Taipei City 22102, Taiwan
TEL	+886-2-26963909
FAX	+886-2-26963911
Website	http://www.commell.com.tw
E-Mail	info@commell.com.tw (General Information) tech@commell.com.tw (Technical Support)
Facebook	https://www.facebook.com/pages/Taiwan-Commate-Computer-Inc/547993955271899
Twitter	https://twitter.com/Taiwan_Commate

Commell is the trademark of Taiwan Commate Computer INC.