

SP-601H

User's Manual

Edition 1.2

2009/10/28



Copyright

Copyright 2008 all rights reserved. This document is copyrighted and all rights are reserved. The information in this document is subject to change without prior notice to make improvements to the products.

This document contains proprietary information and protected by copyright. No part of this document may be reproduced, copied, or translated in any form or any means without prior written permission of the manufacturer.

All trademarks and/or registered trademarks contains in this document are property of their respective owners.

Disclaimer

The company shall not be liable for any incidental or consequential damages resulting from the performance or use of this product.

The company does not issue a warranty of any kind, express or implied, including without limitation implied warranties of merchantability or fitness for a particular purpose.

The company has the right to revise the manual or include changes in the specifications of the product described within it at any time without notice and without obligation to notify any person of such revision or changes.

Trademark

All trademarks are the property of their respective holders.

Any questions please visit our website at <http://www.commell.com.tw>.

Packing List:

Hardware:

SP-601H PCI Capture Card x 1

Cable kit :

Video cable (Included)

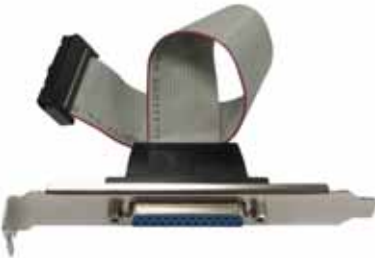


EMI (optional)

16-Ch BNC video input Cable x 1

(OALDB25-BNC16)

Audio cable (Option)



D-SUB 25 Cable x 1

(OAL1P-601H)



16-Ch RCA audio input Cable x 1

(OALDB25-AUD16)

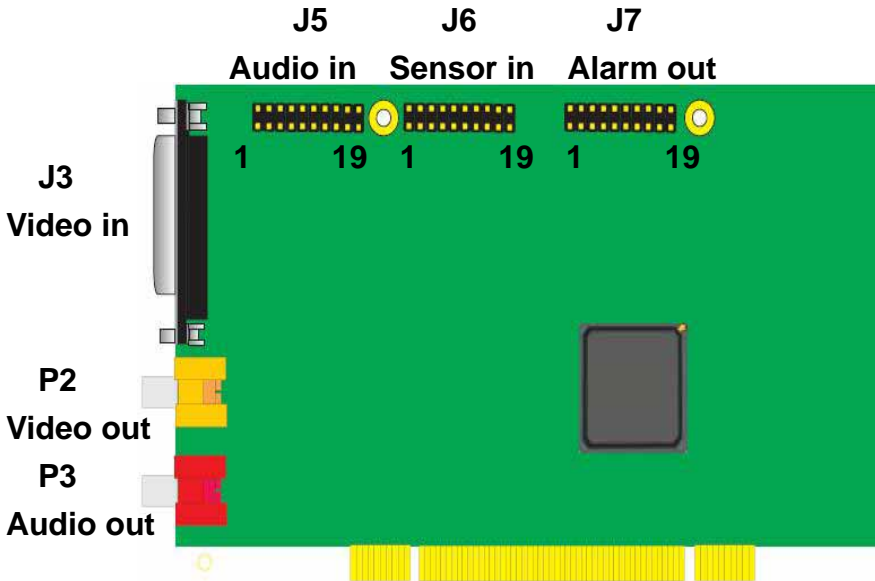
CD Content:

Drivers & User's Manual

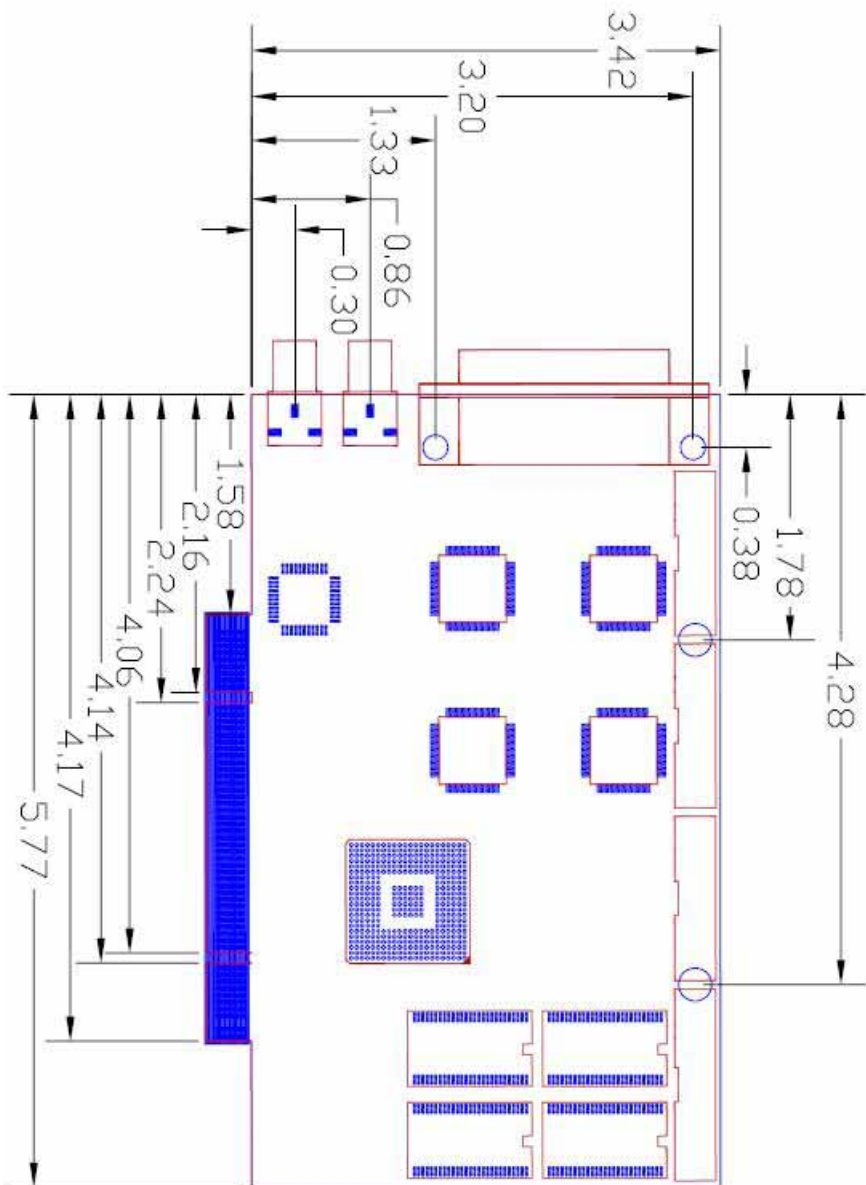
1.0 <Product Specification>

General Specification	
Form Factor	PCI Capture Card
Video Decode Chipset	Softlogic solo6010-16
Accessories	1 x 16 Channel video inputs Cable 1 x 16 Channel audio inputs Cable (optional) 1 x 20-pin header to D-SUB 25 Cable (optional)
Features	MPEG4 hardware compression Video Capture Card 16 Channel Video & Audio inputs MAX resolution: NTSC at 704*480 PAL at 704*576

1.1 <Component Placement>



1.2 <Mechanical Drawing>



1.3 <Connector Reference>

Connector: J5 (16 channel audio Input)

Type: 20-pin (10x2) header(2.54mm) X 1

Pin	Description	Pin	Description
1	Audio Input Ch 9	2	Audio Input Ch 1
3	Audio Input Ch 10	4	Audio Input Ch 2
5	Audio Input Ch 11	6	Audio Input Ch 3
7	Audio Input Ch 12	8	Audio Input Ch 4
9	Audio Input Ch 13	10	Audio Input Ch 5
11	Audio Input Ch 14	12	Audio Input Ch 6
13	Audio Input Ch 15	14	Audio Input Ch 7
15	Audio Input Ch 16	16	Audio Input Ch 8
17	N/C	18	N/C
19	GND	20	GND

Connector: J6 (16 channel Sensor Input)

Type: 20-pin (10x2) header(2.54mm) X 1

Pin	Description	Pin	Description
1	Sensor Input Ch 9	2	Sensor Input Ch 1
3	Sensor Input Ch 10	4	Sensor Input Ch 2
5	Sensor Input Ch 11	6	Sensor Input Ch 3
7	Sensor Input Ch 12	8	Sensor Input Ch 4
9	Sensor Input Ch 13	10	Sensor Input Ch 5
11	Sensor Input Ch 14	12	Sensor Input Ch 6
13	Sensor Input Ch 15	14	Sensor Input Ch 7
15	Sensor Input Ch 16	16	Sensor Input Ch 8
17	3.3V	18	5V
19	GND	20	GND

Connector: J7 (4 channel Alarm output)

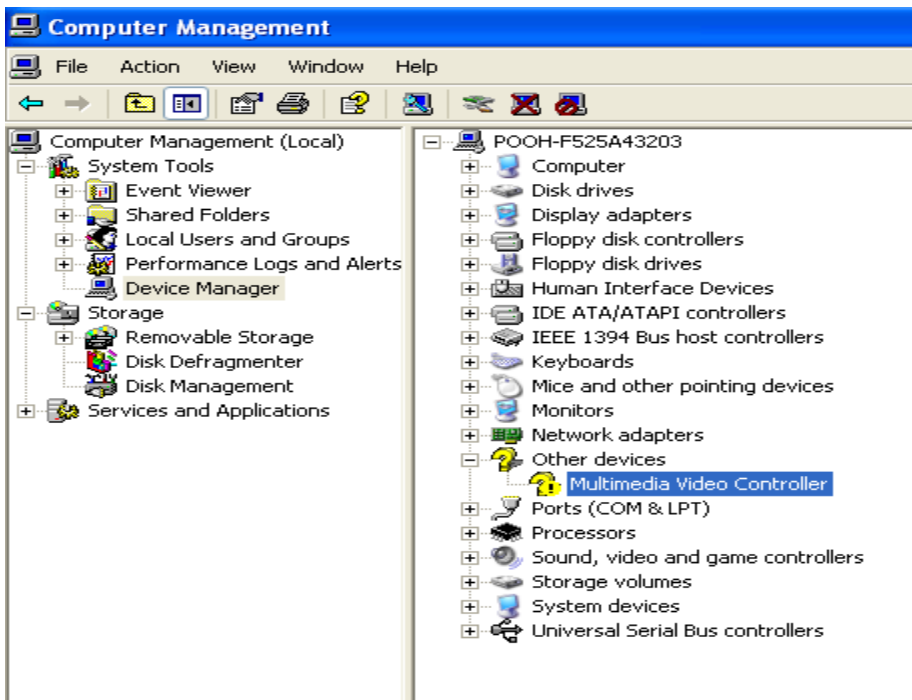
Type: 20-pin (10x2) header(2.54mm) X 1

Pin	Description	Pin	Description
1	N/C	2	N/C
3	N/C	4	N/C
5	N/C	6	N/C
7	Alarm Ch 1	8	N/C
9	Alarm Ch 2	10	N/C
11	Alarm Ch 3	12	N/C
13	Alarm Ch 4	14	N/C
15	N/C	16	N/C
17	5V	18	3.3V
19	GND	20	GND

1.4 <Driver Setting>

1. Copy the CD Driver folder to disk, Ex: C:\ , D:\ ...

2. Please choose **Device Manager**
then you can see **other devices**



3. Please choose **Multimedia Controller** then press **advanced**



4. Please select file location

D:\SP-601HWindowXP
\Driver_090217

Hardware Update Wizard

Please choose your search and installation options.

Search for the best driver in these locations.

Use the check boxes below to limit or expand the default search, which includes local paths and removable media. The best driver found will be installed.

Search removable media (floppy, CD-ROM...)

Include this location in the search:

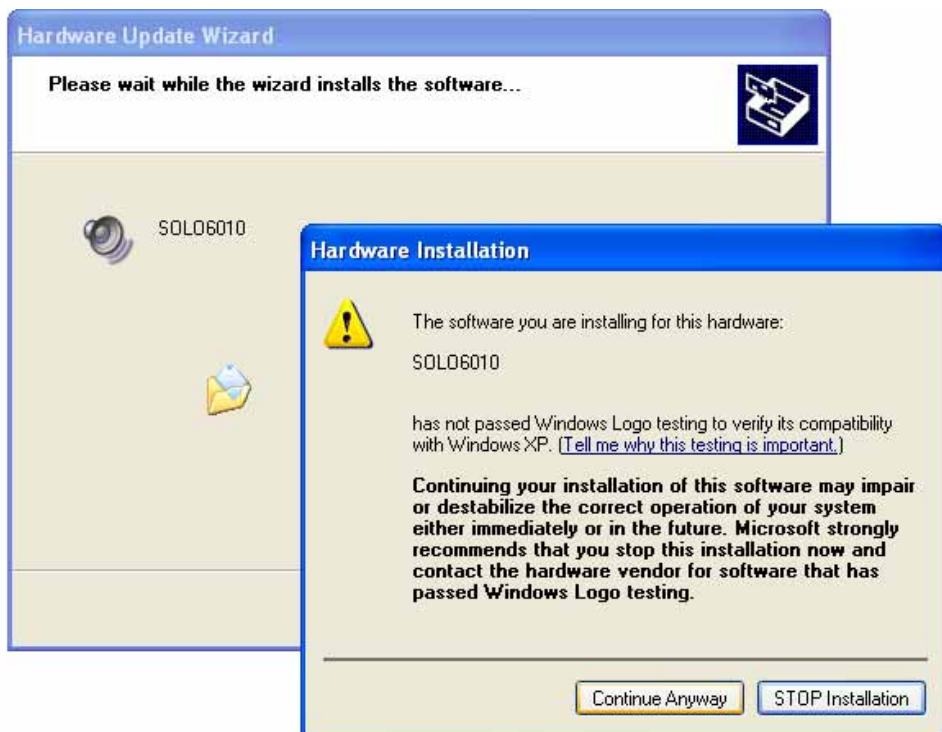
D:\SP-601H\WindowXP\Driver_090217

Don't search. I will choose the driver to install.

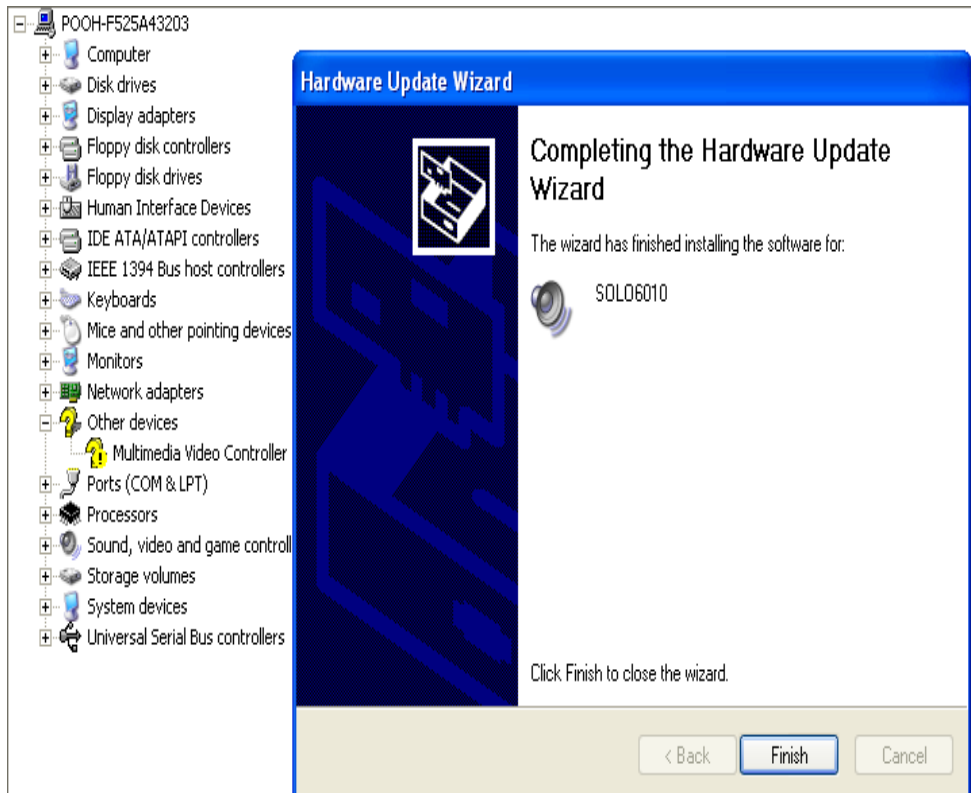
Choose this option to select the device driver from a list. Windows does not guarantee that the driver you choose will be the best match for your hardware.

< Back Next > Cancel

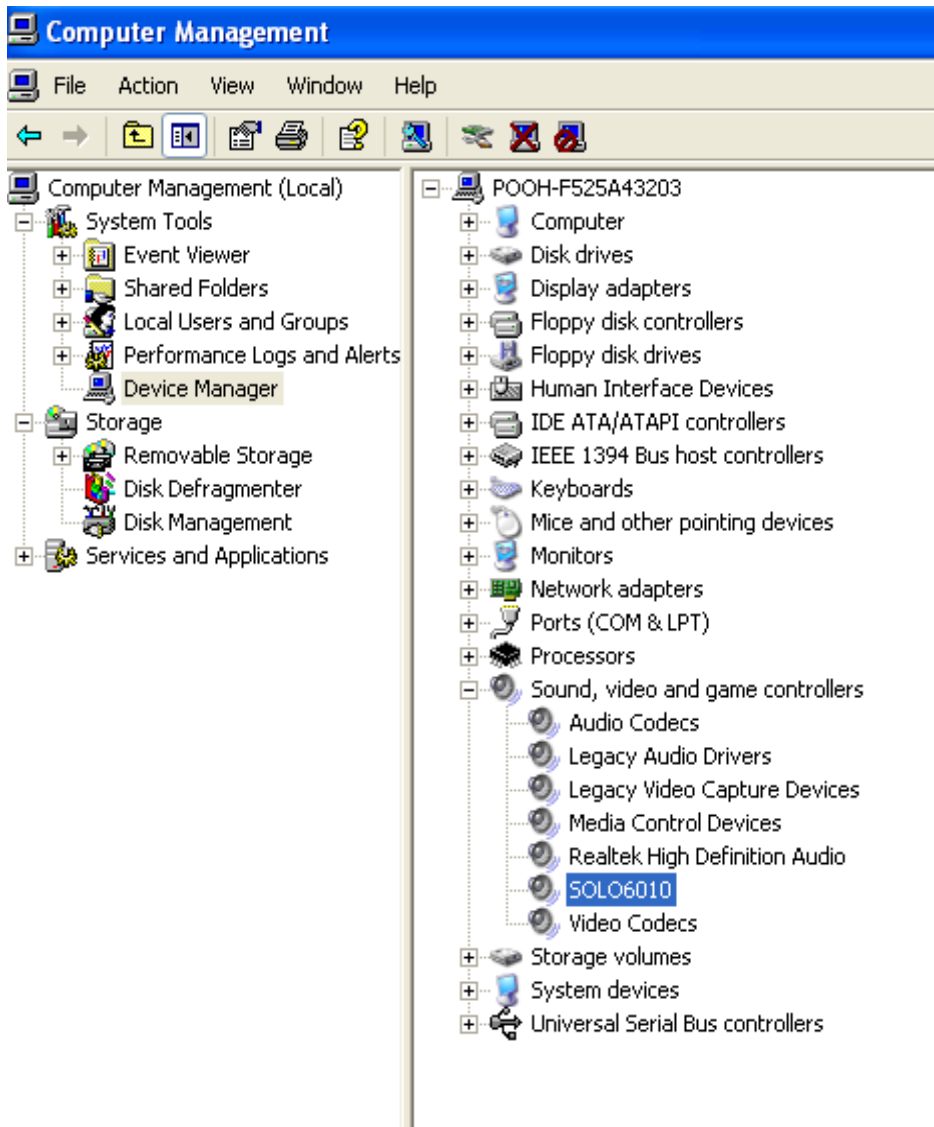
5. Please press **continue anyway**



6. Press Finish



7. Driver install succeed

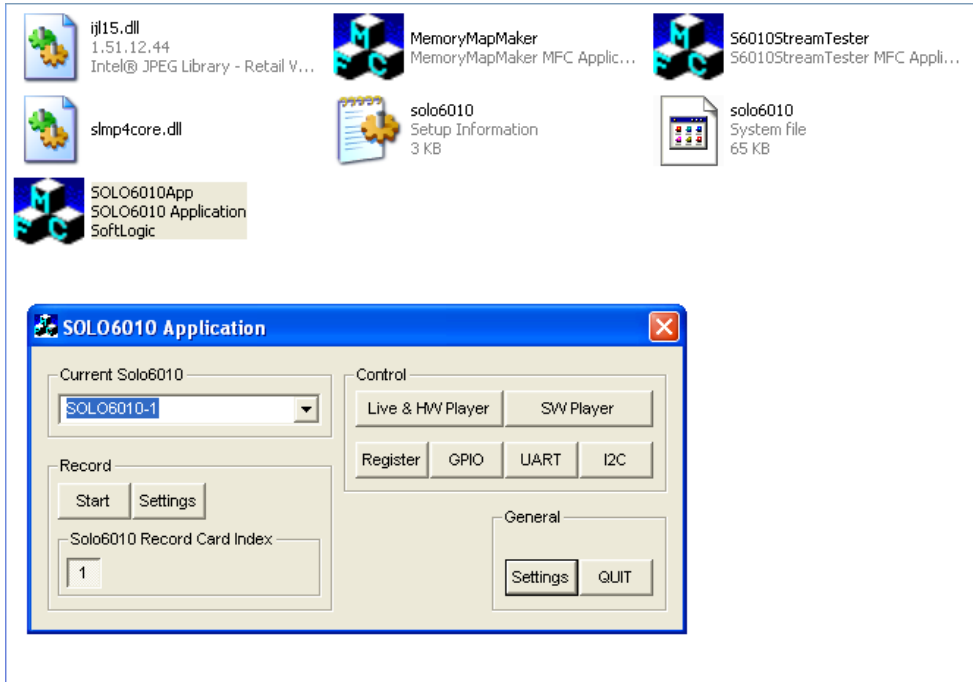


1.5 <Application Setting & Functions>

1. Please select SDK location

D:\SP-601H\WindowXP\SDK\bin

then press SOLO6010App



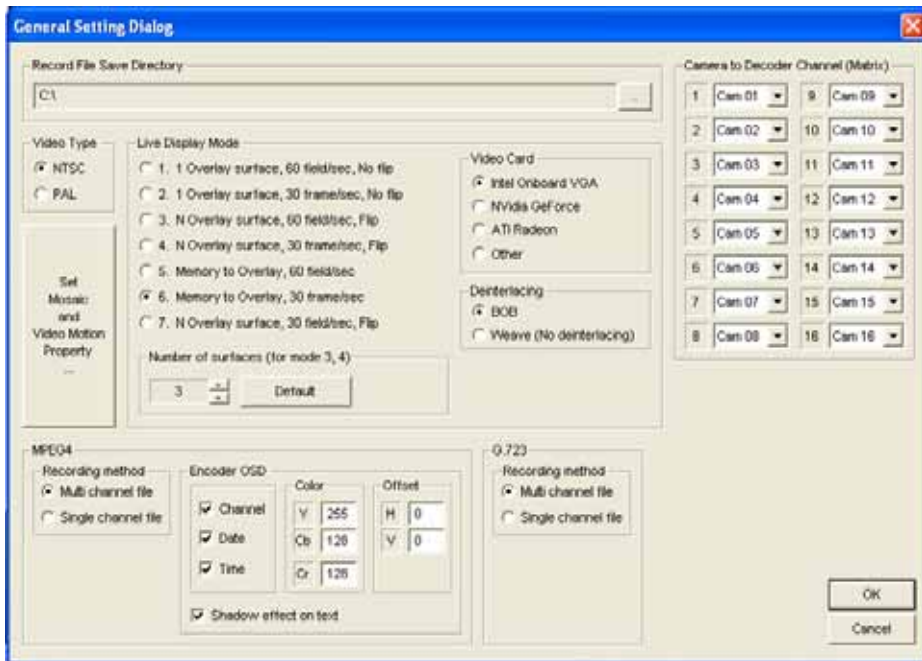
2.Press General Setting

Live Display Mode select

5. Memory to Overlay , 60 field/sec or

6. Memory to Overlay , 30 frame/sec

VGA Card select Intel Onboard VGA



3.Main Function

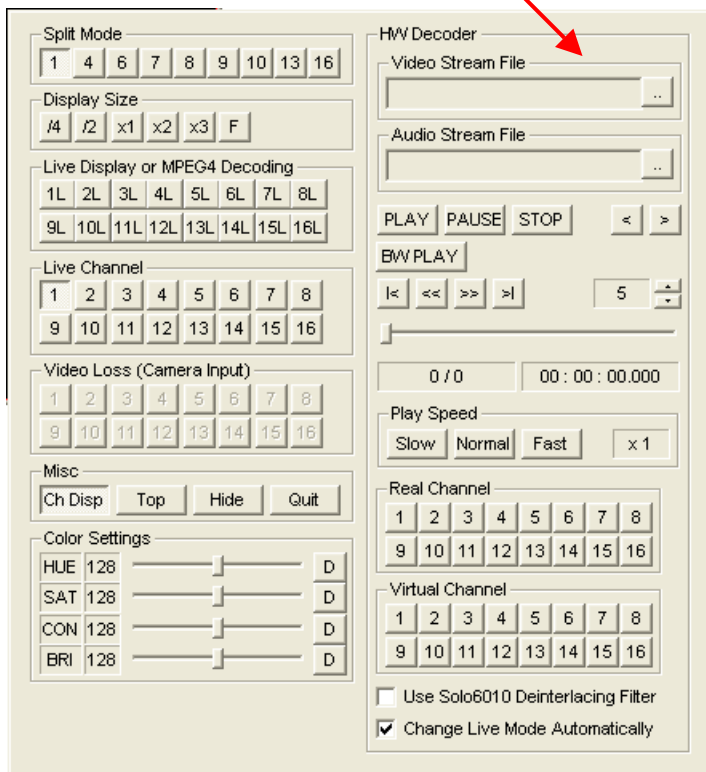
1. Live & HW player

The live display and hardware player can be tested using this function

Load file

video → xxx.MR4

audio → xxx.RG7

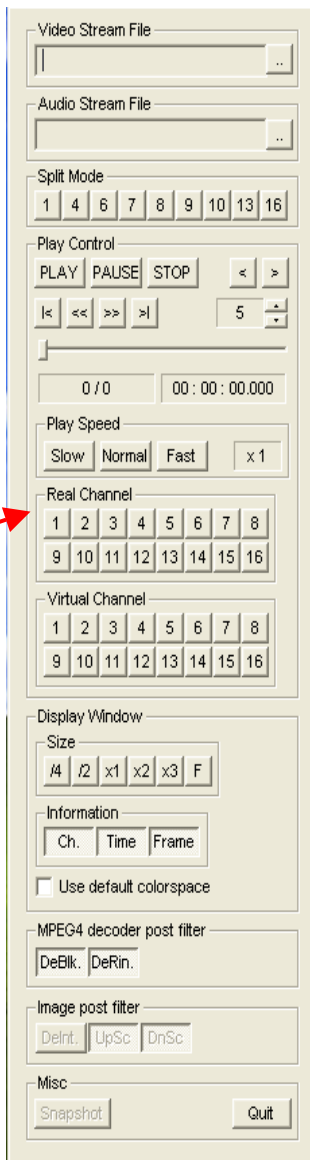


2. SW player

The recorded MPEG4 file can be played back using this function

Select audio channel

The audio played back only one channel



Record setting

FPS → 60 FOR test

Video channel

audio channel

	Quality	GOP	Img. Size	FPS	I.B.P.	Bitrate	CBR Buffer
All		0					
1	3	15	704x240 Field	60		VBR	5 sec
2	3	15	704x240 Field	60		VBR	5 sec
3	3	15	704x240 Field	60		VBR	5 sec
4	3	15	704x240 Field	60		VBR	5 sec
5	3	15	704x240 Field	60		VBR	5 sec
6	3	15	704x240 Field	60		VBR	5 sec
7	3	15	704x240 Field	60		VBR	5 sec
8	3	15	704x240 Field	60		VBR	5 sec
9	3	15	704x240 Field	60		VBR	5 sec
10	3	15	704x240 Field	60		VBR	5 sec
11	3	15	704x240 Field	60		VBR	5 sec
12	3	15	704x240 Field	60		VBR	5 sec
13	3	15	704x240 Field	60		VBR	5 sec
14	3	15	704x240 Field	60		VBR	5 sec
15	3	15	704x240 Field	60		VBR	5 sec
16	3	15	704x240 Field	60		VBR	5 sec

Contact Information

Any advice or comment about our products and service, or anything we can help you please don't hesitate to contact with us. We will do our best to support you for your products, projects and business.

Taiwan Commate Computer Inc.

Address 19F, No. 94, Sec. 1, Shin Tai Wu Rd., Shi Chih
Taipei Hsien, Taiwan

TEL +886-2-26963909

FAX +886-2-26963911

Website <http://www.commell.com.tw>

E-Mail info@commell.com.tw (General Information)
tech@commell.com.tw (Technical Support)

Commell is the trademark of Taiwan Commate Computer INC.