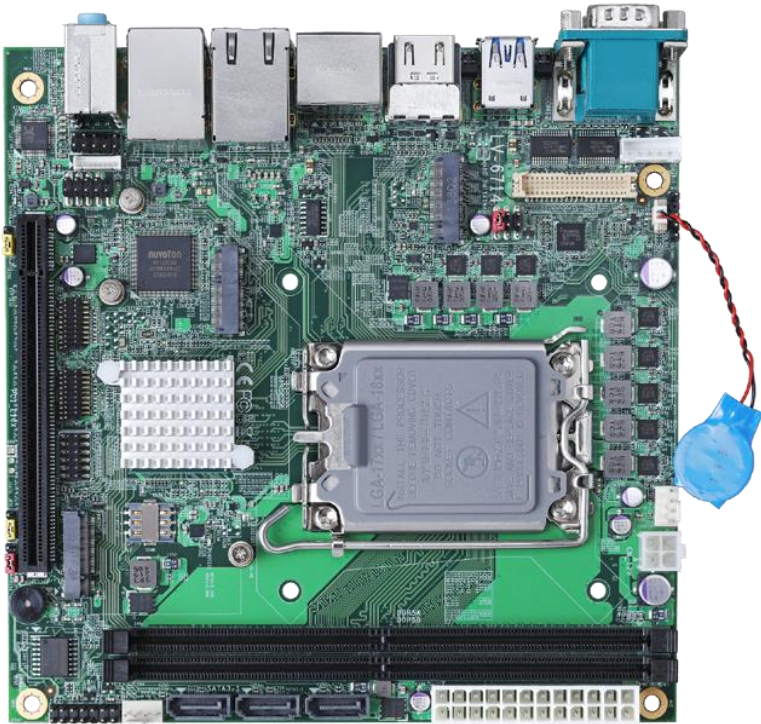


Product Test Report



| | |
|-------------------------|---------------------------|
| Product Name | LV-6714 |
| Product Version | B |
| Issued Date | 2023.06.14 |
| Report Edition | 1.0 |
| BIOS Version | 2.0 |
| Testing Engineer | Rick |
| Check Engineer | Daniel & Perry |

REVISION HISTORY

| DATE | REVISION NO. | PAGE | DESCRIPTONS |
|-------------------|---------------------|-------------|------------------------|
| 2023.06.14 | Ver. 1.0 | 129 | Initial Release |

Index

| | |
|---|-----------|
| 1. Function test | 4 |
| 1.1 Hardware functions..... | 4 |
| 1.2 BIOS function | 5 |
| 1.3 Driver | 6 |
| 2. Compatibility test | 7 |
| 2.1 CPU Test..... | 7 |
| 2.2 Memory Test | 8 |
| 2.3 HDMI Graphic Quality Test | 9 |
| 2.4 Display Port Graphic Quality Test | 10 |
| 2.5 Audio | 11 |
| 2.6 HDD Test | 12 |
| 2.7 DVD-ROM Test | 13 |
| 2.8 USB Test..... | 14 |
| 2.9 Serial Port Test | 14 |
| 2.10 LAN Test..... | 14 |
| 2.11 Power Supply Test..... | 15 |
| 2.12 OS Install | 15 |
| 2.13 M.2 card | 15 |
| 3. Environmental test | 16 |
| 3.1 Temperature Test..... | 16 |
| 3.2 Thermal measurements at various points on the board | 19 |
| 4. Reliability Test | 22 |
| 4.1 Power Consumption Test | 22 |
| 5. Performance Test | 27 |
| 5.1 3D MARK VANTAGE | 27 |
| 5.2 3D MARK 11 | 32 |
| 5.3 PC MARK10..... | 41 |
| 5.4 CINEBENCH R23 | 81 |

5.5 Geekbench 6 87
5.6 Storage Performance 128

1. Function test

1.1 Hardware functions

Base Function Test

| Item | Description | Result |
|------|--------------------|--------|
| 1 | Power Button | PASS |
| 2 | Reset | PASS |
| 3 | Power LED | PASS |
| 4 | HDD LED | PASS |
| 5 | CPUFAN | PASS |
| 6 | SYSFAN | PASS |
| 7 | AUDIO | PASS |
| 8 | CN_AUDIO | PASS |
| 9 | LAN1 (I219-LM) | PASS |
| 10 | LAN2 (I226-LM) | PASS |
| 11 | DDR5 A/B | PASS |
| 12 | SATA3-1/2/3 | PASS |
| 13 | USB3.2 1/2/3/4/5/6 | PASS |
| 14 | CN_USB 1/2 | PASS |
| 15 | COM 1/2 | PASS |
| 16 | CN_COM 3/4/5/6 | PASS |
| 17 | HDMI 1/2 | PASS |
| 18 | Display Port 1/2 | PASS |
| 19 | LVDS | PASS |
| 20 | M2_B | PASS |
| 21 | M2_E | PASS |
| 22 | M2_M | PASS |
| 23 | PCIEX16 | PASS |

Jumper

| Item | Description | Result |
|------|-------------|--------|
| 1 | JRTC | PASS |
| 2 | JAT | PASS |
| 3 | JP1 | PASS |
| 4 | JP2 | PASS |
| 5 | JVLCD | PASS |
| 6 | JSATA | PASS |

1.2 BIOS function

| Item | Description | Result | Remark |
|------|----------------------------------|--------|--------|
| 1 | Press 'Del' to run Setup Utility | PASS | |
| 2 | Ctrl-Alt-Del – Soft-Reboot | PASS | |
| 3 | Save & Exit Setup | PASS | |
| 4 | Date & Time Setting | PASS | |
| 5 | Selection Language | PASS | |
| 6 | Quick Boot | PASS | |
| 7 | Diagnostic Splash Screen | PASS | |
| 8 | UEFI Boot | PASS | |
| 9 | Serial Port Configuration | PASS | |
| 10 | Fan Control | PASS | |
| 11 | VBT Select | PASS | |
| 12 | EDID Panel Type | PASS | |
| 13 | LVDS Bus | PASS | |
| 14 | HD Audio | PASS | |
| 15 | Restore On Power Loss | PASS | |

| Item | Description | Result | Remark |
|------|---------------------------|--------|--------|
| 16 | Watch Dog Timer Selection | PASS | |
| 17 | Power On By RTC Alarm | PASS | |
| 18 | Supervisor Password | PASS | |
| 19 | User Password | PASS | |

1.3 Driver

CD edition : IPCI2-1.3

1. Windows 10 64 bit Driver Test

| Item | Description | Result | Version |
|------|----------------|--------|--------------------------------------|
| 1 | Chipset Driver | PASS | 3.1.7.143 |
| 2 | VGA Driver | PASS | 31.0.101.1999 |
| 3 | Audio Driver | PASS | 6.0.1.8036 |
| 4 | LAN Driver | PASS | I219LM:12.19.2.45 I225LM:1.1.3.28 |

2. Compatibility test

2.1 CPU Test

Test environment:

OS: Windows 10 64bit

Test program: BurnIn Test 8.1

| Spec | CPU Speed | Family | Processor | MAX TDP | Smart Cache | Result |
|------|-----------|---------|------------|---------|-------------|--------|
| QYHH | 5.10 GHz | Core | i9-12900 | 65 W | 30 MB | PASS |
| QYMG | 4.80 GHz | Core | i9-12900TE | 65 W | 25 MB | PASS |
| QYMH | 4.80 GHz | Core | i7-12700E | 35 W | 30 MB | PASS |
| QYVJ | 4.60 GHz | Core | i5-12500 | 65 W | 18 MB | PASS |
| QYYR | 3.00 GHz | Celeron | 6900E | 46 W | 4 MB | PASS |

2.2 Memory Test

Test environment:

OS: Windows 10 64bit

Test program : BurnIn 8.1

| Manufacturer | Chip | Frequency | Capacity Mbytes | Memory test Result |
|--------------------------------------|---------------------------------------|-----------|--------------------|--------------------------|
| crucial CT32G48C40U5.M16A1 | Micro 2BA45 DB8NJ | DDR5 4800 | 32 GB | PASS |
| ADATA AD5U480016G-S | SpecTek PT008-48B F 2144 | DDR5 4800 | 16 GB | PASS |
| DSL D5US2G082SH48A.AC | SEC 240 K4RAH0B 6VB BCQK | DDR5 4800 | 32 GB | PASS |
| innodisk M5U0-BGS2KCVP | SEC 149 K4RAH0B 6VB BCQK | DDR5 4800 | 32 GB | PASS |

2.3 HDMI Graphic Quality Test

Test environment:

OS Windows 10 64bit

Driver version : 31.0.101.1999

| Resolution | Bit depth | Result | Remark |
|-------------|-----------|--------|--------|
| 800 x 600 | 8-bit | PASS | |
| 1024 x 768 | 8-bit | PASS | |
| 1152 x 864 | 8-bit | PASS | |
| 1280 x 600 | 8-bit | PASS | |
| 1280 x 720 | 8-bit | PASS | |
| 1280 x 768 | 8-bit | PASS | |
| 1280 x 800 | 8-bit | PASS | |
| 1280 x 960 | 8-bit | PASS | |
| 1280 x 1024 | 8-bit | PASS | |
| 1360 x 768 | 8-bit | PASS | |
| 1366 x 768 | 8-bit | PASS | |
| 1400 x 1050 | 8-bit | PASS | |
| 1440 x 900 | 8-bit | PASS | |
| 1600 x 900 | 8-bit | PASS | |
| 1600 x 1200 | 8-bit | PASS | |
| 1680 x 1050 | 8-bit | PASS | |
| 1792 x 1344 | 8-bit | PASS | |
| 1856 x 1392 | 8-bit | PASS | |
| 1920 x 1080 | 8-bit | PASS | |
| 1920 x 1200 | 8-bit | PASS | |
| 1920 x 1440 | 8-bit | PASS | |

| | | | |
|--------------------|--------------|------|--|
| 2048 x 1152 | 8-bit | PASS | |
| 2048 x 1536 | 8-bit | PASS | |
| 2560 x 1440 | 8-bit | PASS | |
| 2560 x 1600 | 8-bit | PASS | |
| 2560 x 1920 | 8-bit | PASS | |
| 2560 x 2048 | 8-bit | PASS | |
| 3840 x 2160 | 8-bit | PASS | |

2.4 Display Port Graphic Quality Test

Test environment:

OS Windows 10 64bit

Driver version : 31.0.101.1999

| Resolution | Bit depth | Result | Remark |
|--------------------|------------------|---------------|---------------|
| 800 x 600 | 8-bit | PASS | |
| 1024 x 768 | 8-bit | PASS | |
| 1152 x 864 | 8-bit | PASS | |
| 1280 x 600 | 8-bit | PASS | |
| 1280 x 720 | 8-bit | PASS | |
| 1280 x 768 | 8-bit | PASS | |
| 1280 x 800 | 8-bit | PASS | |
| 1280 x 960 | 8-bit | PASS | |
| 1280 x 1024 | 8-bit | PASS | |
| 1360 x 768 | 8-bit | PASS | |
| 1366 x 768 | 8-bit | PASS | |
| 1400 x 1050 | 8-bit | PASS | |

| | | | |
|-------------|-------|------|--|
| 1440 x 900 | 8-bit | PASS | |
| 1600 x 900 | 8-bit | PASS | |
| 1600 x 1200 | 8-bit | PASS | |
| 1680 x 1050 | 8-bit | PASS | |
| 1792 x 1344 | 8-bit | PASS | |
| 1856 x 1392 | 8-bit | PASS | |
| 1920 x 1080 | 8-bit | PASS | |
| 1920 x 1200 | 8-bit | PASS | |
| 1920 x 1440 | 8-bit | PASS | |
| 2048 x 1152 | 8-bit | PASS | |
| 2048 x 1536 | 8-bit | PASS | |
| 2560 x 1440 | 8-bit | PASS | |
| 2560 x 1600 | 8-bit | PASS | |
| 2560 x 1920 | 8-bit | PASS | |
| 2560 x 2048 | 8-bit | PASS | |
| 3840 x 2160 | 8-bit | PASS | |

2.5 Audio

Test environment:

OS Windows 10 64-bit

Driver version : 6.0.1.8036

| Item | Description | Result | Remark |
|------|-------------|--------|--------|
| 1 | 2.1CH | PASS | |
| 2 | Microphone | PASS | |
| 3 | LINE | PASS | |

2.6 HDD Test

Test environment:

OS Windows 10 64bit

| HDD Model | Interface | Capacity | HDD Size Detect | HDD Data Transfer | HDD LED Check |
|---|-------------------------|---------------|-----------------|-------------------|---------------|
| TOSHIBA DT01ACA200 | HDD | 2 TB | PASS | PASS | PASS |
| Western Digital WD20EFRX-68AX9N0 | HDD | 2 TB | PASS | PASS | PASS |
| Western Digital WD10EZEX-00WN4A0 | HDD | 1 TB | PASS | PASS | PASS |
| Western Digital WD5000BEKT-00PK4T0 | HDD | 500 GB | PASS | PASS | PASS |
| Western Digital WD3200AAKS-00B3A0 | HDD | 320 GB | PASS | PASS | PASS |
| Kingston DT Data Traveler | USB 3.0 | 32 GB | PASS | PASS | PASS |
| SMI USB | USB 2.0 | 8 GB | PASS | PASS | PASS |
| Transcend TS120GMTS420S | M.2 3042 SSD | 120 GB | PASS | PASS | PASS |
| acpi M2PDD-8L | M.2 2280 SSD | 1 TB | PASS | PASS | PASS |
| acpi M2SCQ-8L | M.2 2280 SSD | 256 GB | PASS | PASS | PASS |
| acpi M2SCQ-8L | M.2 2280 SSD | 128 GB | PASS | PASS | PASS |

2.7 DVD-ROM Test

Test environment:

OS Windows 10 64bit

| DVD-ROM Model | Interface | DVD-ROM Detect | DVD-ROM Data Transfer | Play DVD |
|-------------------------|-----------|----------------|-----------------------|----------|
| PIONEER DVD DDVR-S19LBK | SATA | PASS | PASS | PASS |
| ASUS DRW-1814BLT | SATA | PASS | PASS | PASS |
| LG GH20NS15 | SATA | PASS | PASS | PASS |
| LITEON DVD eBAU108 | USB | PASS | PASS | PASS |
| LITEON DVD eTAU108 | USB | PASS | PASS | PASS |
| ZyNET GT32N | USB | PASS | PASS | PASS |

2.8 USB Test

1. Windows 10 64-bit

| Item | Result | Remark |
|----------------------------|--------|--------|
| External USB Keyboard Test | PASS | |
| External USB Mouse Test | PASS | |
| Hot plugging test | PASS | |
| DVD-ROM | PASS | |
| USB Mass storage | PASS | |

2.9 Serial Port Test

1. Windows 10 64-bit

| Item | Description | Result | Remark |
|------|----------------------|--------|--------|
| 1 | Device Manager Check | PASS | |
| 2 | RS-232 Mouse Test | PASS | |

2.10 LAN Test

Data Transfer Test environment:

-CAT 6 UTP 100M

-8 HR. continuous

1. Windows 10 64-bit

| Item | Description | Result | Remark |
|------|----------------------|--------|----------|
| 1 | Device Manager Check | PASS | (IPERF3) |
| 2 | Data Transfer Test | PASS | (IPERF3) |

2.11 Power Supply Test

| Item | Type | Description | Result | Remark |
|------|-----------|----------------------------|--------|--------|
| 1 | ATX Power | AcBel PC7008 430W | PASS | |
| 2 | ATX Power | SEED BS400 400W | PASS | |
| 3 | ATX Power | Seasonic SS-330HB 330W | PASS | |
| 4 | ATX Power | Antec EA-350 GREEN 350W | PASS | |

2.12 OS Install

| Item | Description | Result | Remark |
|------|----------------------------------|--------|--------|
| 1 | Windows 10 64 bit | PASS | |
| 2 | Xubuntu22.04 (5.15.0-69-generic) | PASS | |

2.13 M.2 card

| Motherboard | M.2 card | Result | Remark |
|-------------|----------|--------|--------|
| LV-6714 | M2-210 | PASS | |
| | M2-225 | PASS | |
| | M2-2213 | PASS | |
| | M2-3502 | PASS | |
| | M2-3504 | PASS | |

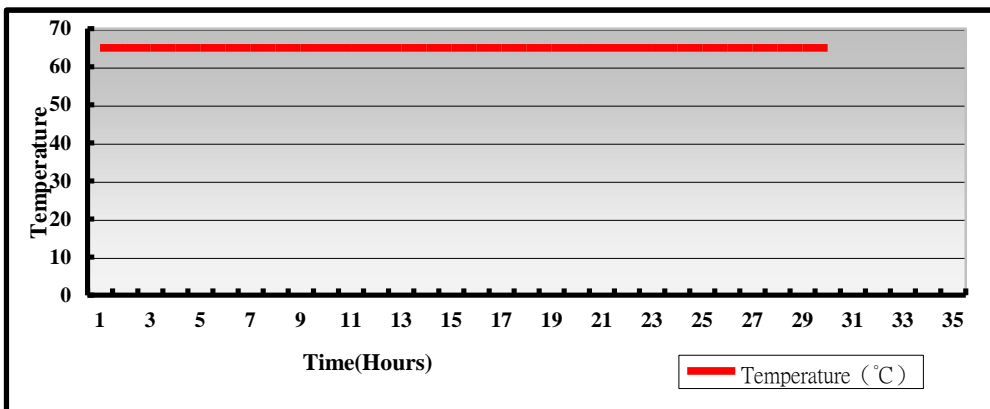
3. Environmental test

3.1 Temperature Test

Hardware Device list:

| | |
|----------------|--|
| System Board | LV-6714_B |
| CPU | 12th Gen Intel(R) Core(TM) i9-12900 5.10GHz |
| Memory | crucial DDR5 4800 32GB*2 (Micro 2BA45 DB8NJ) |
| HDD | TOSHIBA DT01ACA200 2TB |
| Operating OS | Windows 10 64bit |
| Test Equipment | GIANT FORCE GTH-150-60-SP-AR LCD-9530 Programmer/Controller |
| Test Program | BurnIn 8.1 |

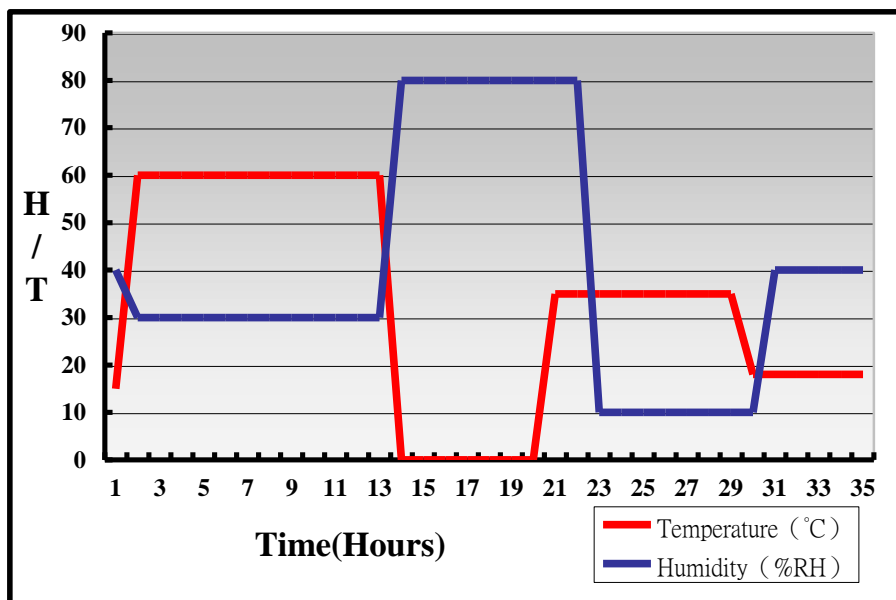
Test Result:



Hardware Device list:

| | |
|----------------|--|
| System Board | LV-6714_B |
| CPU | 12th Gen Intel(R) Core(TM) i9-12900 5.10GHz |
| Memory | crucial DDR5 4800 32GB*2 (Micro 2BA45 DB8NJ) |
| HDD | TOSHIBA DT01ACA200 2TB |
| Operating OS | Windows 10 64bit |
| Test Equipment | GIANT FORCE GTH-150-60-SP-AR LCD-9530 Programmer/Controller |
| Test Program | BurnIn 8.1 |

Test Result:



Boot up Test:

Hardware Device list:

| | |
|---------------------|---|
| System Board | LV-6714_B |
| CPU | 12th Gen Intel(R) Core(TM) i9-12900 5.10GHz |
| Memory | crucial DDR5 4800 32GB*2 (Micro 2BA45 DB8NJ) |
| HDD | TOSHIBA DT01ACA200 2TB |

| Temperature | Result | Remark |
|--------------------|---------------|---------------|
| -40°C | PASS | 50 Times |
| 80°C | PASS | 50 Times |

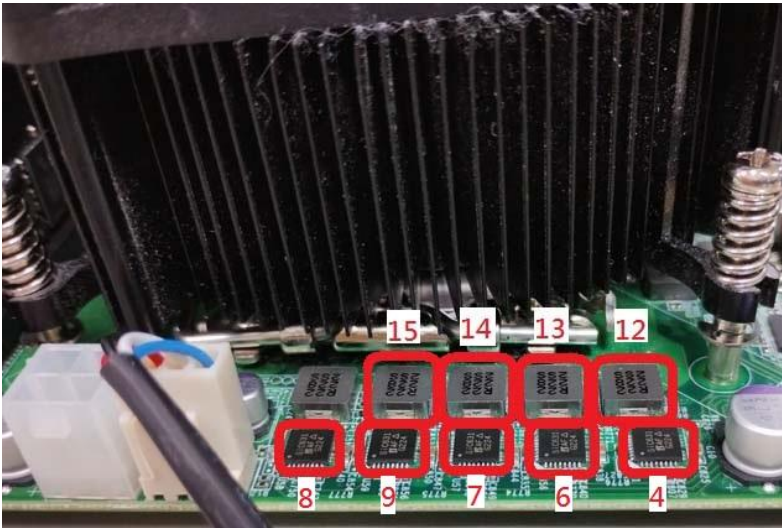
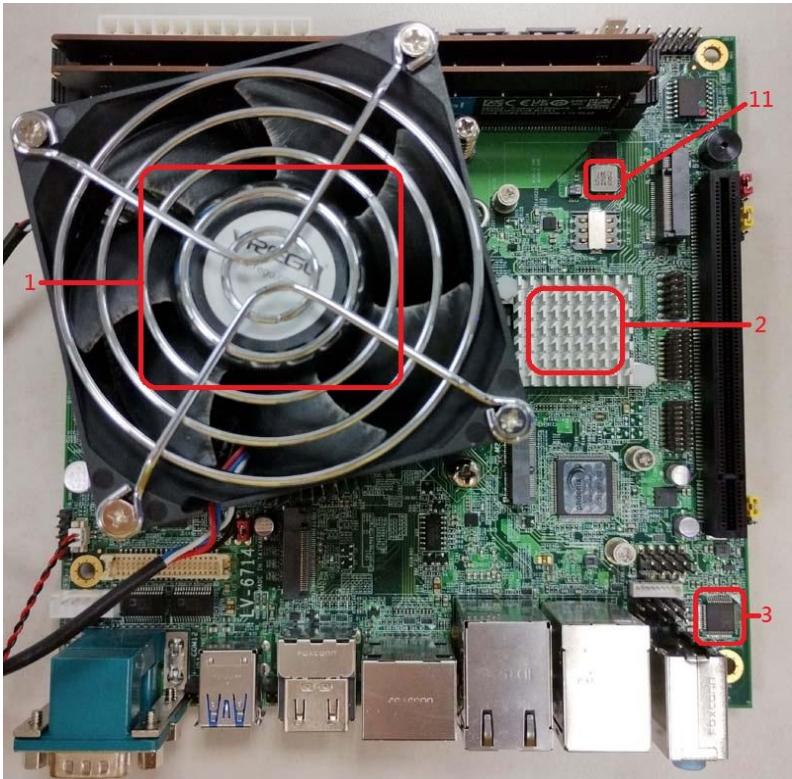
3.2 Thermal measurements at various points on the board

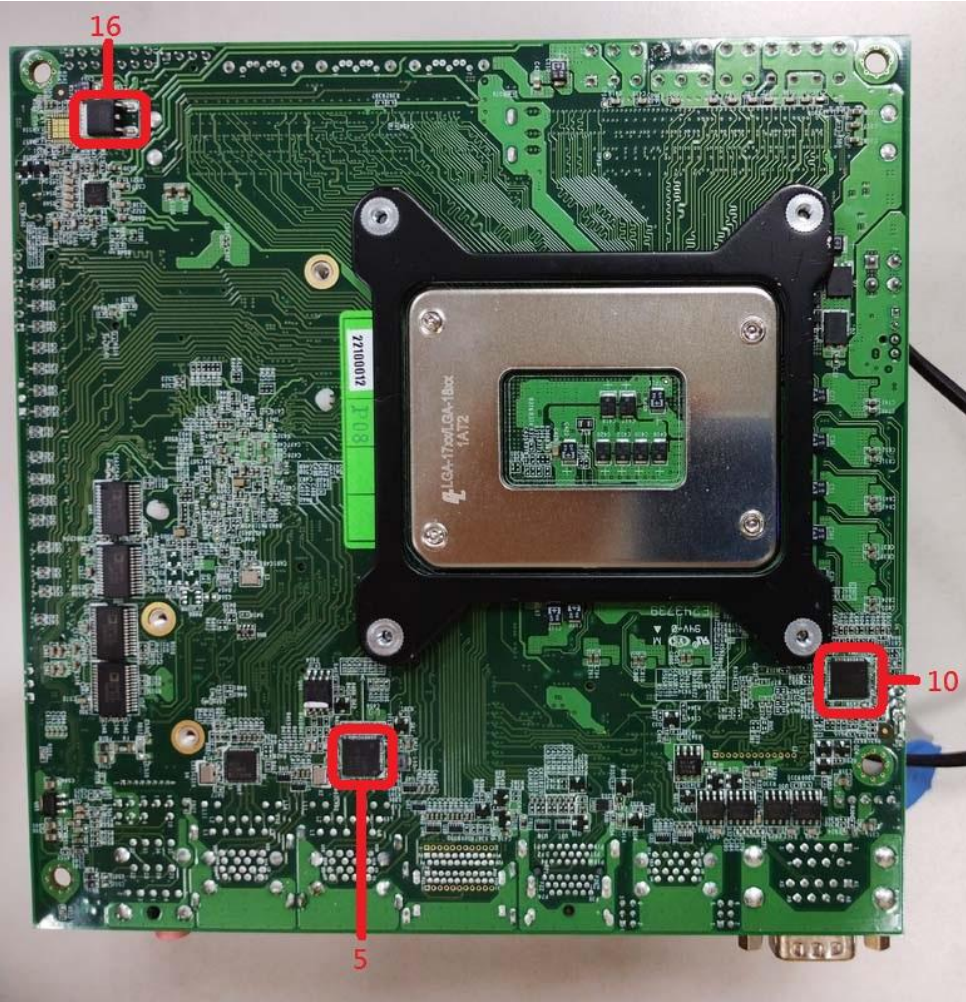
Test Environment:

| | |
|-------------------------|---|
| CPU | 12th Gen Intel(R) Core(TM) i9-12900 5.10GHz |
| Memory | crucial DDR5 4800 32GB*2 (Micro 2BA45 DB8NJ) |
| HDD | TOSHIBA DT01ACA200 2TB |
| Power Supply | AcBel PC7008 430W |
| Operating System | Windows 10 64-bit |
| Test Program | AIDA64 + BurnIn8.1 + Prime95 |

Test Result:

| Item | Environmental temperature | 28.2°C |
|-------------|----------------------------------|---------------|
| 1 | CPU | 47°C |
| 2 | PCH (ICHQ670E) | 37.4°C |
| 3 | U27 (ICHALC888S-VD2-GR) | 45.4°C |
| 4 | U31 (ICSIC631) | 51°C |
| 5 | U43 (ICI226LM) | 38.7°C |
| 6 | U56 (ICSIC631) | 53.6°C |
| 7 | U57 (ICSIC631) | 53°C |
| 8 | U58 (ICSIC631) | 51.5°C |
| 9 | U59 (ICSIC631) | 47.4°C |
| 10 | U61 (ICRT3628AE) | 39.7°C |
| 11 | L11 (LLC3.3UH/063T) | 38.6°C |
| 12 | L31 (LLC0.22UH/063T) | 47°C |
| 13 | L32 (LLC0.22UH/063T) | 48.3°C |
| 14 | L33 (LLC0.22UH/063T) | 47.6°C |
| 15 | L34 (LLC0.22UH/063T) | 46.5°C |
| 16 | Q46 (TRE1084) | 36.1°C |





4. Reliability Test

4.1 Power Consumption Test

1. Test Environment:

| | |
|--------------------|---|
| Motherboard | LV-6714_B |
| CPU | Intel® Celeron® G6900E 3.00GHz |
| Memory | crucial DDR5 4800 32GB*2 (Micro 2BA45 DB8NJ) |
| HDD | acpi M2PDD-8L PCIe 1TB |

Power Supply: Antec EA-350 GREEN 350W

| Voltage | MS-DOS Boot up | | Windows 10 64bit AIDA64 | |
|---------|-------------------|-------------|----------------------------|-------------|
| | Current (A) | Power (W) | Current (A) | Power (W) |
| 12V | 0.94 | 11.28 | 1.25 | 15 |
| 5V | 3.3 | 16.5 | 2.91 | 14.55 |
| 3.3V | 0.2 | 0.66 | 0.69 | 2.277 |
| 5VSB | 0.259 | 1.295 | 0.1 | 0.5 |

1. a. Test Environment:

The same as above but with LCD

| | |
|----------------------|-----------------------|
| Display Panel | AUO M215HW03 21.5”LCD |
|----------------------|-----------------------|

Power Supply: Antec EA-350 GREEN 350W

| Voltage | MS-DOS Boot up | | Windows 10 64bit AIDA64 | |
|---------|-------------------|-------------|----------------------------|-------------|
| | Current (A) | Power (W) | Current (A) | Power (W) |
| 12V | 1.53 | 18.36 | 2.47 | 29.64 |
| 5V | 3.4 | 17 | 3.05 | 15.25 |
| 3.3V | 1.43 | 4.719 | 1.8 | 5.94 |
| 5VSB | 0.27 | 1.35 | 0.051 | 0.255 |

2. Test Environment:

| | |
|--------------------|---|
| Motherboard | LV-6714_B |
| CPU | Intel® Core™ i9-12900 5.10GHz |
| Memory | crucial DDR5 4800 32GB*2 (Micro 2BA45 DB8NJ) |
| HDD | acpi M2PDD-8L PCIe 1TB |

Power Supply: Antec EA-350 GREEN 350W

| Voltage | MS-DOS Boot up | | Windows 10 64bit AIDA64 | |
|---------|-------------------|-------------|----------------------------|-------------|
| | Current (A) | Power (W) | Current (A) | Power (W) |
| 12V | 1.43 | 17.16 | 15.64 | 187.68 |
| 5V | 3.48 | 17.4 | 3.25 | 16.25 |
| 3.3V | 0.2 | 0.66 | 0.77 | 2.541 |
| 5VSB | 0.254 | 1.27 | 0.088 | 0.44 |

2. a. Test Environment:

The same as above but with LCD

| | |
|----------------------|------------------------------|
| Display Panel | AUO M215HW03 21.5”LCD |
|----------------------|------------------------------|

Power Supply: Antec EA-350 GREEN 350W

| Voltage | MS-DOS Boot up | | Windows 10 64bit AIDA64 | |
|---------|-------------------|-------------|----------------------------|-------------|
| | Current (A) | Power (W) | Current (A) | Power (W) |
| 12V | 1.86 | 22.32 | 11.63 | 139.56 |
| 5V | 3.5 | 17.5 | 3.19 | 15.95 |
| 3.3V | 1.42 | 4.686 | 1.86 | 6.138 |
| 5VSB | 0.251 | 1.255 | 0.042 | 0.21 |

3. Test Environment:

| | |
|--------------------|---|
| Motherboard | LV-6714_B |
| CPU | Intel® Core™ i9-12900TE 4.80GHz |
| Memory | crucial DDR5 4800 32GB*2 (Micro 2BA45 DB8NJ) |
| HDD | acpi M2PDD-8L PCIe 1TB |

Power Supply: Antec EA-350 GREEN 350W

| Voltage | MS-DOS Boot up | | Windows 10 64bit AIDA64 | |
|-------------|-------------------|--------------|----------------------------|---------------|
| | Current (A) | Power (W) | Current (A) | Power (W) |
| 12V | 0.81 | 9.72 | 8.44 | 101.28 |
| 5V | 3.58 | 17.9 | 3.39 | 16.95 |
| 3.3V | 0.22 | 0.726 | 0.76 | 2.508 |
| 5VSB | 0.278 | 1.39 | 0.095 | 0.475 |

3. a. Test Environment:

The same as above but with LCD

| | |
|----------------------|------------------------------|
| Display Panel | AUO M215HW03 21.5”LCD |
|----------------------|------------------------------|

Power Supply: Antec EA-350 GREEN 350W

| Voltage | MS-DOS Boot up | | Windows 10 64bit AIDA64 | |
|-------------|-------------------|--------------|----------------------------|--------------|
| | Current (A) | Power (W) | Current (A) | Power (W) |
| 12V | 1.95 | 23.4 | 9.95 | 119.4 |
| 5V | 3.58 | 17.9 | 3.21 | 16.05 |
| 3.3V | 1.39 | 1.287 | 1.92 | 6.336 |
| 5VSB | 0.276 | 1.38 | 0.034 | 0.17 |

4. Test Environment:

| | |
|--------------------|---|
| Motherboard | LV-6714_B |
| CPU | Intel® Core™ i5-12500 4.60GHz |
| Memory | crucial DDR5 4800 32GB*2 (Micro 2BA45 DB8NJ) |
| HDD | acpi M2PDD-8L PCIe 1TB |

Power Supply: Antec EA-350 GREEN 350W

| Voltage | MS-DOS Boot up | | Windows 10 64bit AIDA64 | |
|----------------|---------------------------|--------------------|------------------------------------|--------------------|
| | Current (A) | Power (W) | Current (A) | Power (W) |
| 12V | 0.79 | 9.48 | 8.83 | 105.96 |
| 5V | 3.42 | 17.1 | 3.03 | 15.15 |
| 3.3V | 0.3 | 0.99 | 0.72 | 2.376 |
| 5VSB | 0.369 | 1.845 | 0.1 | 0.5 |

4. a. Test Environment:

The same as above but with LCD

| | |
|----------------------|------------------------------|
| Display Panel | AUO M215HW03 21.5”LCD |
|----------------------|------------------------------|

Power Supply: Antec EA-350 GREEN 350W

| Voltage | MS-DOS Boot up | | Windows 10 64bit AIDA64 | |
|----------------|---------------------------|--------------------|------------------------------------|--------------------|
| | Current (A) | Power (W) | Current (A) | Power (W) |
| 12V | 1.89 | 22.68 | 10.04 | 120.48 |
| 5V | 3.43 | 17.15 | 3.07 | 15.35 |
| 3.3V | 1.49 | 4.917 | 2.02 | 6.666 |
| 5VSB | 0.365 | 1.825 | 0.029 | 0.145 |

5. Test Environment:

| | |
|--------------------|---|
| Motherboard | LV-6714_B |
| CPU | Intel® Core™ i7-12700E 4.80GHz |
| Memory | crucial DDR5 4800 32GB*2 (Micro 2BA45 DB8NJ) |
| HDD | acpi M2PDD-8L PCIe 1TB |

Power Supply: Antec EA-350 GREEN 350W

| Voltage | MS-DOS Boot up | | Windows 10 64bit AIDA64 | |
|-------------|-------------------|--------------|----------------------------|---------------|
| | Current (A) | Power (W) | Current (A) | Power (W) |
| 12V | 1.21 | 14.52 | 13.34 | 160.08 |
| 5V | 3.44 | 17.2 | 3.08 | 15.4 |
| 3.3V | 0.31 | 1.023 | 0.74 | 2.442 |
| 5VSB | 0.355 | 1.775 | 0.027 | 0.135 |

5. a. Test Environment:

The same as above but with LCD

| | |
|----------------------|------------------------------|
| Display Panel | AUO M215HW03 21.5”LCD |
|----------------------|------------------------------|

Power Supply: Antec EA-350 GREEN 350W

| Voltage | MS-DOS Boot up | | Windows 10 64bit AIDA64 | |
|-------------|-------------------|--------------|----------------------------|---------------|
| | Current (A) | Power (W) | Current (A) | Power (W) |
| 12V | 1.82 | 21.84 | 14.91 | 178.92 |
| 5V | 3.44 | 17.2 | 3.12 | 15.6 |
| 3.3V | 1.5 | 4.95 | 1.83 | 6.039 |
| 5VSB | 0.362 | 1.81 | 0.029 | 0.145 |

5. Performance Test

5.1 3D MARK VANTAGE

Windows 10 64-bit

| Item | Weighted Suite | Test Environment | Result | Remark |
|------|----------------|--|--------|--------|
| 1 | 3DMARK SCORE | Intel(R) Celeron(R) 6900E 3.00GHz crucial DDR5 4800 32GB*2 (Micro 2BA45 DB8NJ) acpi M2PDD-8L 1TB | PASS | P1403 |
| 2 | GPU SCORE | | PASS | 1086 |
| 3 | CPU SCORE | | PASS | 11099 |

Windows 10 64-bit

| Item | Weighted Suite | Test Environment | Result | Remark |
|------|----------------|--|--------|--------|
| 1 | 3DMARK SCORE | Intel(R) Celeron(R) 6900E 3.00GHz crucial DDR5 4800 32GB (Micro 2BA45 DB8NJ) ADATA DDR5 4800 16GB (SpecTek PT008-48B F 2144) acpi M2PDD-8L 1TB | PASS | P1385 |
| 2 | GPU SCORE | | PASS | 1072 |
| 3 | CPU SCORE | | PASS | 11050 |

Windows 10 64-bit

| Item | Weighted Suite | Test Environment | Result | Remark |
|------|----------------|--|--------|--------|
| 1 | 3DMARK SCORE | Intel(R) Celeron(R) 6900E 3.00GHz crucial DDR5 4800 32GB (Micro 2BA45 DB8NJ) acpi M2PDD-8L 1TB | PASS | P1382 |
| 2 | GPU SCORE | | PASS | 1070 |
| 3 | CPU SCORE | | PASS | 11161 |

Windows 10 64-bit

| Item | Weighted Suite | Test Environment | Result | Remark |
|------|----------------|---|--------|--------|
| 1 | 3DMARK SCORE | Intel(R) Celeron(R) 6900E 3.00GHz ADATA DDR5 4800 16GB*2 (SpecTek PT008-48B F 2144) acpi M2PDD-8L 1TB | PASS | P1382 |
| 2 | GPU SCORE | | PASS | 1070 |
| 3 | CPU SCORE | | PASS | 11010 |

Windows 10 64-bit

| Item | Weighted Suite | Test Environment | Result | Remark |
|------|----------------|---|--------|--------|
| 1 | 3DMARK SCORE | Intel(R) Celeron(R) 6900E 3.00GHz ADATA DDR5 4800 16GB (SpecTek PT008-48B F 2144) acpi M2PDD-8L 1TB | PASS | P1398 |
| 2 | GPU SCORE | | PASS | 1083 |
| 3 | CPU SCORE | | PASS | 11013 |

Windows 10 64-bit

| Item | Weighted Suite | Test Environment | Result | Remark |
|------|----------------|--|--------|--------|
| 1 | 3DMARK SCORE | Intel(R) Celeron(R) 6900E 3.00GHz crucial DDR5 4800 32GB (Micro 2BA45 DB8NJ) ADATA DDR5 4800 16GB (SpecTek PT008-48B F 2144) acpi M2PDD-8L 1TB | PASS | P1385 |
| 2 | GPU SCORE | | PASS | 1072 |
| 3 | CPU SCORE | | PASS | 11050 |

Windows 10 64-bit

| Item | Weighted Suite | Test Environment | Result | Remark |
|------|----------------|---|--------|--------|
| 1 | 3DMARK SCORE | Intel(R) Celeron(R) 6900E 3.00GHz DSL DDR5 4800 32GB*2 (SEC 240 K4RAH0B 6VB BCQK) acpi M2PDD-8L 1TB | PASS | P1387 |
| 2 | GPU SCORE | | PASS | 1074 |
| 3 | CPU SCORE | | PASS | 11218 |

Windows 10 64-bit

| Item | Weighted Suite | Test Environment | Result | Remark |
|------|----------------|---|--------|--------|
| 1 | 3DMARK SCORE | Intel(R) Celeron(R) 6900E 3.00GHz DSL DDR5 4800 32GB (SEC 240 K4RAH0B 6VB BCQK) acpi M2PDD-8L 1TB | PASS | P1398 |
| 2 | GPU SCORE | | PASS | 1083 |
| 3 | CPU SCORE | | PASS | 11059 |

Windows 10 64-bit

| Item | Weighted Suite | Test Environment | Result | Remark |
|------|----------------|--|--------|--------|
| 1 | 3DMARK SCORE | Intel(R) Celeron(R) 6900E 3.00GHz innodisk DDR5 4800 32GB*2 (SEC 149 K4RAH0B 6VB BCQK) acpi M2PDD-8L 1TB | PASS | P1382 |
| 2 | GPU SCORE | | PASS | 1070 |
| 3 | CPU SCORE | | PASS | 11064 |

Windows 10 64-bit

| Item | Weighted Suite | Test Environment | Result | Remark |
|------|----------------|--|--------|--------|
| 1 | 3DMARK SCORE | Intel(R) Celeron(R) 6900E 3.00GHz innodisk DDR5 4800 32GB (SEC 149 K4RAH0B 6VB BCQK) acpi M2PDD-8L 1TB | PASS | P1394 |
| 2 | GPU SCORE | | PASS | 1079 |
| 3 | CPU SCORE | | PASS | 11015 |

Windows 10 64-bit

| Item | Weighted Suite | Test Environment | Result | Remark |
|------|----------------|--|--------|--------|
| 1 | 3DMARK SCORE | Intel(R) Celeron(R) 6900E 3.00GHz DSL DDR5 4800 32GB (SEC 240 K4RAH0B 6VB BCQK) innodisk DDR5 4800 32GB (SEC 149 K4RAH0B 6VB BCQK) acpi M2PDD-8L 1TB | PASS | P1388 |
| 2 | GPU SCORE | | PASS | 1074 |
| 3 | CPU SCORE | | PASS | 11006 |

Windows 10 64-bit

| Item | Weighted Suite | Test Environment | Result | Remark |
|------|----------------|--|--------|--------|
| 1 | 3DMARK SCORE | Intel(R) Celeron(R) 6900E 3.00GHz DSL DDR5 4800 32GB (SEC 240 K4RAH0B 6VB BCQK) crucial DDR5 4800 32GB (Micro 2BA45 DB8NJ) acpi M2PDD-8L 1TB | PASS | P1387 |
| 2 | GPU SCORE | | PASS | 1074 |
| 3 | CPU SCORE | | PASS | 11053 |

Windows 10 64-bit

| Item | Weighted Suite | Test Environment | Result | Remark |
|------|----------------|---|--------|--------|
| 1 | 3DMARK SCORE | Intel(R) Celeron(R) 6900E 3.00GHz DSL DDR5 4800 32GB (SEC 240 K4RAH0B 6VB BCQK) ADATA DDR5 4800 16GB (SpecTek PT008-48B F 2144) acpi M2PDD-8L 1TB | PASS | P1404 |
| 2 | GPU SCORE | | PASS | 1088 |
| 3 | CPU SCORE | | PASS | 11032 |

Windows 10 64-bit

| Item | Weighted Suite | Test Environment | Result | Remark |
|------|----------------|---|--------|--------|
| 1 | 3DMARK SCORE | Intel(R) Celeron(R) 6900E 3.00GHz innodisk DDR5 4800 32GB (SEC 149 K4RAH0B 6VB BCQK) crucial DDR5 4800 32GB (Micro 2BA45 DB8NJ) acpi M2PDD-8L 1TB | PASS | P1388 |
| 2 | GPU SCORE | | PASS | 1074 |
| 3 | CPU SCORE | | PASS | 11006 |

Windows 10 64-bit

| Item | Weighted Suite | Test Environment | Result | Remark |
|------|----------------|--|--------|--------|
| 1 | 3DMARK SCORE | Intel(R) Celeron(R) 6900E 3.00GHz innodisk DDR5 4800 32GB (SEC 149 K4RAH0B 6VB BCQK) ADATA DDR5 4800 16GB (SpecTek PT008-48B F 2144) acpi M2PDD-8L 1TB | PASS | P1404 |
| 2 | GPU SCORE | | PASS | 1088 |
| 3 | CPU SCORE | | PASS | 11032 |

Windows 10 64-bit

| Item | Weighted Suite | Test Environment | Result | Remark |
|------|----------------|---|--------|--------|
| 1 | 3DMARK SCORE | Intel(R) Core(TM) i5-12500 4.60GHz crucial DDR5 4800 32GB*2 (Micro 2BA45 DB8NJ) acpi M2PDD-8L 1TB | PASS | P2927 |
| 2 | GPU SCORE | | PASS | 2221 |
| 3 | CPU SCORE | | PASS | 62425 |

Windows 10 64-bit

| Item | Weighted Suite | Test Environment | Result | Remark |
|------|----------------|---|--------|--------|
| 1 | 3DMARK SCORE | Intel(R) Core(TM) i5-12500 4.60GHz crucial DDR5 4800 32GB (Micro 2BA45 DB8NJ) ADATA DDR5 4800 16GB (SpecTek PT008-48B F 2144) acpi M2PDD-8L 1TB | PASS | P2918 |
| 2 | GPU SCORE | | PASS | 2214 |
| 3 | CPU SCORE | | PASS | 62610 |

Windows 10 64-bit

| Item | Weighted Suite | Test Environment | Result | Remark |
|------|----------------|---|--------|--------|
| 1 | 3DMARK SCORE | Intel(R) Core(TM) i5-12500 4.60GHz crucial DDR5 4800 32GB (Micro 2BA45 DB8NJ) acpi M2PDD-8L 1TB | PASS | P2920 |
| 2 | GPU SCORE | | PASS | 2216 |
| 3 | CPU SCORE | | PASS | 62149 |

Windows 10 64-bit

| Item | Weighted Suite | Test Environment | Result | Remark |
|------|----------------|--|--------|--------|
| 1 | 3DMARK SCORE | Intel(R) Core(TM) i5-12500 4.60GHz ADATA DDR5 4800 16GB*2 (SpecTek PT008-48B F 2144) acpi M2PDD-8L 1TB | PASS | P2627 |
| 2 | GPU SCORE | | PASS | 2221 |
| 3 | CPU SCORE | | PASS | 62148 |

Windows 10 64-bit

| Item | Weighted Suite | Test Environment | Result | Remark |
|------|----------------|--|--------|--------|
| 1 | 3DMARK SCORE | Intel(R) Core(TM) i5-12500 4.60GHz ADATA DDR5 4800 16GB (SpecTek PT008-48B F 2144) acpi M2PDD-8L 1TB | PASS | P2923 |
| 2 | GPU SCORE | | PASS | 2218 |
| 3 | CPU SCORE | | PASS | 62134 |

Windows 10 64-bit

| Item | Weighted Suite | Test Environment | Result | Remark |
|------|----------------|--|--------|--------|
| 1 | 3DMARK SCORE | Intel(R) Core(TM) i5-12500 4.60GHz DSL DDR5 4800 32GB*2 (SEC 240 K4RAH0B 6VB BCQK) acpi M2PDD-8L 1TB | PASS | P2920 |
| 2 | GPU SCORE | | PASS | 2216 |
| 3 | CPU SCORE | | PASS | 62248 |

Windows 10 64-bit

| Item | Weighted Suite | Test Environment | Result | Remark |
|------|----------------|---|--------|--------|
| 1 | 3DMARK SCORE | Intel(R) Core(TM) i5-12500 4.60GHz DSL DDR5 4800 32GB (SEC 240 K4RAH0B 6VB BCQK) innodisk DDR5 4800 32GB (SEC 149 K4RAH0B 6VB BCQK) acpi M2PDD-8L 1TB | PASS | P2933 |
| 2 | GPU SCORE | | PASS | 2226 |
| 3 | CPU SCORE | | PASS | 62477 |

Windows 10 64-bit

| Item | Weighted Suite | Test Environment | Result | Remark |
|------|----------------|---|--------|--------|
| 1 | 3DMARK SCORE | Intel(R) Core(TM) i5-12500 4.60GHz innodisk DDR5 4800 32GB*2 (SEC 149 K4RAH0B 6VB BCQK) acpi M2PDD-8L 1TB | PASS | P2925 |
| 2 | GPU SCORE | | PASS | 2219 |
| 3 | CPU SCORE | | PASS | 62262 |

Windows 10 64-bit

| Item | Weighted Suite | Test Environment | Result | Remark |
|------|----------------|---|--------|--------|
| 1 | 3DMARK SCORE | Intel(R) Core(TM) i5-12500 4.60GHz innodisk DDR5 4800 32GB (SEC 149 K4RAH0B 6VB BCQK) acpi M2PDD-8L 1TB | PASS | P2933 |
| 2 | GPU SCORE | | PASS | 2226 |
| 3 | CPU SCORE | | PASS | 62477 |

Windows 10 64-bit

| Item | Weighted Suite | Test Environment | Result | Remark |
|------|----------------|---|--------|--------|
| 1 | 3DMARK SCORE | Intel(R) Core(TM) i5-12500 4.60GHz DSL DDR5 4800 32GB (SEC 240 K4RAH0B 6VB BCQK) crucial DDR5 4800 32GB (Micro 2BA45 DB8NJ) acpi M2PDD-8L 1TB | PASS | P2928 |
| 2 | GPU SCORE | | PASS | 2222 |
| 3 | CPU SCORE | | PASS | 62064 |

Windows 10 64-bit

| Item | Weighted Suite | Test Environment | Result | Remark |
|------|----------------|--|--------|--------|
| 1 | 3DMARK SCORE | Intel(R) Core(TM) i5-12500 4.60GHz DSL DDR5 4800 32GB (SEC 240 K4RAH0B 6VB BCQK) ADATA DDR5 4800 16GB (SpecTek PT008-48B F 2144) acpi M2PDD-8L 1TB | PASS | P2929 |
| 2 | GPU SCORE | | PASS | 2223 |
| 3 | CPU SCORE | | PASS | 62148 |

Windows 10 64-bit

| Item | Weighted Suite | Test Environment | Result | Remark |
|------|----------------|---|--------|--------|
| 1 | 3DMARK SCORE | Intel(R) Core(TM) i5-12500 4.60GHz innodisk DDR5 4800 32GB (SEC 149 K4RAH0B 6VB BCQK) ADATA DDR5 4800 16GB (SpecTek PT008-48B F 2144) acpi M2PDD-8L 1TB | PASS | P2944 |
| 2 | GPU SCORE | | PASS | 2235 |
| 3 | CPU SCORE | | PASS | 61764 |

5.2 3D MARK 11

Windows 10 64-bit

| Item | Weighted Suite | Test Environment | Result | Remark |
|------|----------------|--|--------|--------|
| 1 | 3DMARK SCORE | Intel(R) Celeron(R) 6900E 3.00GHz crucial DDR5 4800 32GB (Micro 2BA45 DB8NJ) ADATA DDR5 4800 16GB (SpecTek PT008-48B F 2144) acpi M2PDD-8L 1TB | PASS | E814 |
| 2 | Graphics SCORE | | PASS | 678 |
| 3 | Physics SCORE | | PASS | 4703 |
| 4 | Combined SCORE | | PASS | 656 |

Windows 10 64-bit

| Item | Weighted Suite | Test Environment | Result | Remark |
|------|----------------|--|--------|--------|
| 1 | 3DMARK SCORE | Intel(R) Celeron(R) 6900E 3.00GHz crucial DDR5 4800 32GB (Micro 2BA45 DB8NJ) acpi M2PDD-8L 1TB | PASS | E813 |
| 2 | Graphics SCORE | | PASS | 677 |
| 3 | Physics SCORE | | PASS | 4670 |
| 4 | Combined SCORE | | PASS | 657 |

Windows 10 64-bit

| Item | Weighted Suite | Test Environment | Result | Remark |
|------|----------------|---|--------|--------|
| 1 | 3DMARK SCORE | Intel(R) Celeron(R) 6900E 3.00GHz ADATA DDR5 4800 16GB*2 (SpecTek PT008-48B F 2144) acpi M2PDD-8L 1TB | PASS | E815 |
| 2 | Graphics SCORE | | PASS | 679 |
| 3 | Physics SCORE | | PASS | 4676 |
| 4 | Combined SCORE | | PASS | 655 |

Windows 10 64-bit

| Item | Weighted Suite | Test Environment | Result | Remark |
|------|----------------|---|--------|--------|
| 1 | 3DMARK SCORE | Intel(R) Celeron(R) 6900E 3.00GHz ADATA DDR5 4800 16GB (SpecTek PT008-48B F 2144) acpi M2PDD-8L 1TB | PASS | E815 |
| 2 | Graphics SCORE | | PASS | 679 |
| 3 | Physics SCORE | | PASS | 4614 |
| 4 | Combined SCORE | | PASS | 656 |

Windows 10 64-bit

| Item | Weighted Suite | Test Environment | Result | Remark |
|------|----------------|---|--------|--------|
| 1 | 3DMARK SCORE | Intel(R) Core(TM) i5-12500 4.60GHz crucial DDR5 4800 32GB*2 (Micro 2BA45 DB8NJ) acpi M2PDD-8L 1TB | PASS | E1519 |
| 2 | Graphics SCORE | | PASS | 1251 |
| 3 | Physics SCORE | | PASS | 20751 |
| 4 | Combined SCORE | | PASS | 1127 |

Windows 10 64-bit

| Item | Weighted Suite | Test Environment | Result | Remark |
|------|----------------|---|--------|--------|
| 1 | 3DMARK SCORE | Intel(R) Core(TM) i5-12500 4.60GHz crucial DDR5 4800 32GB (Micro 2BA45 DB8NJ) ADATA DDR5 4800 16GB (SpecTek PT008-48B F 2144) acpi M2PDD-8L 1TB | PASS | E1518 |
| 2 | Graphics SCORE | | PASS | 1249 |
| 3 | Physics SCORE | | PASS | 20535 |
| 4 | Combined SCORE | | PASS | 1131 |

Windows 10 64-bit

| Item | Weighted Suite | Test Environment | Result | Remark |
|-------------|-----------------------|---|---------------|---------------|
| 1 | 3DMARK SCORE | Intel(R) Core(TM) i5-12500 4.60GHz crucial DDR5 4800 32GB (Micro 2BA45 DB8NJ) acpi M2PDD-8L 1TB | PASS | E1514 |
| 2 | Graphics SCORE | | PASS | 1248 |
| 3 | Physics SCORE | | PASS | 17994 |
| 4 | Combined SCORE | | PASS | 1131 |

Windows 10 64-bit

| Item | Weighted Suite | Test Environment | Result | Remark |
|-------------|-----------------------|---|---------------|---------------|
| 1 | 3DMARK SCORE | Intel(R) Core(TM) i5-12500 4.60GHz crucial DDR5 4800 32GB (Micro 2BA45 DB8NJ) acpi M2PDD-8L 1TB | PASS | P848 |
| 2 | Graphics SCORE | | PASS | 711 |
| 3 | Physics SCORE | | PASS | 17948 |
| 4 | Combined SCORE | | PASS | 866 |

Windows 10 64-bit

| Item | Weighted Suite | Test Environment | Result | Remark |
|------|----------------|--|--------|--------|
| 1 | 3DMARK SCORE | Intel(R) Core(TM) i5-12500 4.60GHz ADATA DDR5 4800 16GB*2 (SpecTek PT008-48B F 2144) acpi M2PDD-8L 1TB | PASS | E1543 |
| 2 | Graphics SCORE | | PASS | 1273 |
| 3 | Physics SCORE | | PASS | 20440 |
| 4 | Combined SCORE | | PASS | 1131 |

Windows 10 64-bit

| Item | Weighted Suite | Test Environment | Result | Remark |
|------|----------------|---|--------|--------|
| 1 | 3DMARK SCORE | Intel(R) Core(TM) i5-12500 4.60GHz crucial DDR5 4800 32GB (Micro 2BA45 DB8NJ) acpi M2PDD-8L 1TB | PASS | P854 |
| 2 | Graphics SCORE | | PASS | 716 |
| 3 | Physics SCORE | | PASS | 20329 |
| 4 | Combined SCORE | | PASS | 867 |

Windows 10 64-bit

| Item | Weighted Suite | Test Environment | Result | Remark |
|------|----------------|--|--------|--------|
| 1 | 3DMARK SCORE | Intel(R) Core(TM) i5-12500 4.60GHz ADATA DDR5 4800 16GB (SpecTek PT008-48B F 2144) acpi M2PDD-8L 1TB | PASS | E1539 |
| 2 | Graphics SCORE | | PASS | 1275 |
| 3 | Physics SCORE | | PASS | 17180 |
| 4 | Combined SCORE | | PASS | 1127 |

5.3 PC MARK10

| Test Environment |
|--|
| Intel(R) Celeron(R) 6900E 3.00GHz crucial DDR5 4800 32GB*2 (Micro 2BA45 DB8NJ) acpi M2PDD-8L 1TB |

Windows 10 64-bit

| Item | Weighted Suite | Result | Remark |
|------|--------------------------|--------|--------|
| 1 | PCMark Scores | PASS | 2390 |
| 2 | Essentials | PASS | 5575 |
| 3 | Productivity | PASS | 5067 |
| 4 | Digital Content Creation | PASS | 1312 |

| |
|---|
| Test Environment |
| Intel(R) Celeron(R) 6900E 3.00GHz crucial DDR5 4800 32GB (Micro 2BA45 DB8NJ) ADATA DDR5 4800 16GB (SpecTek PT008-48B F 2144) acpi M2PDD-8L 1TB |

Windows 10 64-bit

| Item | Weighted Suite | Result | Remark |
|-------------|---------------------------------|---------------|---------------|
| 1 | PCMark Scores | PASS | 2558 |
| 2 | Essentials | PASS | 6293 |
| 3 | Productivity | PASS | 5371 |
| 4 | Digital Content Creation | PASS | 1346 |

| |
|---|
| Test Environment |
| Intel(R) Celeron(R) 6900E 3.00GHz crucial DDR5 4800 32GB (Micro 2BA45 DB8NJ) acpi M2PDD-8L 1TB |

Windows 10 64-bit

| Item | Weighted Suite | Result | Remark |
|-------------|---------------------------------|---------------|---------------|
| 1 | PCMark Scores | PASS | 2563 |
| 2 | Essentials | PASS | 6278 |
| 3 | Productivity | PASS | 5419 |
| 4 | Digital Content Creation | PASS | 1345 |

| |
|--|
| Test Environment |
| Intel(R) Celeron(R) 6900E 3.00GHz ADATA DDR5 4800 16GB*2 (SpecTek PT008-48B F 2144) acpi M2PDD-8L 1TB |

Windows 10 64-bit

| Item | Weighted Suite | Result | Remark |
|-------------|--------------------------|---------------|---------------|
| 1 | PCMark Scores | PASS | 2488 |
| 2 | Essentials | PASS | 5877 |
| 3 | Productivity | PASS | 5299 |
| 4 | Digital Content Creation | PASS | 1343 |

| |
|--|
| Test Environment |
| Intel(R) Celeron(R) 6900E 3.00GHz ADATA DDR5 4800 16GB (SpecTek PT008-48B F 2144) acpi M2PDD-8L 1TB |

Windows 10 64-bit

| Item | Weighted Suite | Result | Remark |
|-------------|--------------------------|---------------|---------------|
| 1 | PCMark Scores | PASS | 2564 |
| 2 | Essentials | PASS | 6264 |
| 3 | Productivity | PASS | 5433 |
| 4 | Digital Content Creation | PASS | 1345 |

| |
|--|
| Test Environment |
| Intel(R) Celeron(R) 6900E 3.00GHz DSL DDR5 4800 32GB*2 (SEC 240 K4RAH0B 6VB BCQK) acpi M2PDD-8L 1TB |

Windows 10 64-bit

| Item | Weighted Suite | Result | Remark |
|-------------|---------------------------------|---------------|---------------|
| 1 | PCMark Scores | PASS | 2522 |
| 2 | Essentials | PASS | 6078 |
| 3 | Productivity | PASS | 5344 |
| 4 | Digital Content Creation | PASS | 1341 |

| |
|--|
| Test Environment |
| Intel(R) Celeron(R) 6900E 3.00GHz DSL DDR5 4800 32GB (SEC 240 K4RAH0B 6VB BCQK) acpi M2PDD-8L 1TB |

Windows 10 64-bit

| Item | Weighted Suite | Result | Remark |
|-------------|---------------------------------|---------------|---------------|
| 1 | PCMark Scores | PASS | 2536 |
| 2 | Essentials | PASS | 6170 |
| 3 | Productivity | PASS | 5354 |
| 4 | Digital Content Creation | PASS | 1341 |

| |
|---|
| Test Environment |
| Intel(R) Celeron(R) 6900E 3.00GHz innodisk DDR5 4800 32GB*2 (SEC 149 K4RAH0B 6VB BCQK) acpi M2PDD-8L 1TB |

Windows 10 64-bit

| Item | Weighted Suite | Result | Remark |
|-------------|---------------------------------|---------------|---------------|
| 1 | PCMark Scores | PASS | 2543 |
| 2 | Essentials | PASS | 6149 |
| 3 | Productivity | PASS | 5352 |
| 4 | Digital Content Creation | PASS | 1357 |

| |
|---|
| Test Environment |
| Intel(R) Celeron(R) 6900E 3.00GHz innodisk DDR5 4800 32GB (SEC 149 K4RAH0B 6VB BCQK) acpi M2PDD-8L 1TB |

Windows 10 64-bit

| Item | Weighted Suite | Result | Remark |
|-------------|---------------------------------|---------------|---------------|
| 1 | PCMark Scores | PASS | 2532 |
| 2 | Essentials | PASS | 6132 |
| 3 | Productivity | PASS | 5358 |
| 4 | Digital Content Creation | PASS | 1342 |

| |
|---|
| Test Environment |
| Intel(R) Celeron(R) 6900E 3.00GHz DSL DDR5 4800 32GB (SEC 240 K4RAH0B 6VB BCQK) innodisk DDR5 4800 32GB (SEC 149 K4RAH0B 6VB BCQK) acpi M2PDD-8L 1TB |

Windows 10 64-bit

| Item | Weighted Suite | Result | Remark |
|-------------|---------------------------------|---------------|---------------|
| 1 | PCMark Scores | PASS | 2525 |
| 2 | Essentials | PASS | 6085 |
| 3 | Productivity | PASS | 5352 |
| 4 | Digital Content Creation | PASS | 1342 |

| |
|---|
| Test Environment |
| Intel(R) Celeron(R) 6900E 3.00GHz DSL DDR5 4800 32GB (SEC 240 K4RAH0B 6VB BCQK) crucial DDR5 4800 32GB (Micro 2BA45 DB8NJ) acpi M2PDD-8L 1TB |

Windows 10 64-bit

| Item | Weighted Suite | Result | Remark |
|-------------|---------------------------------|---------------|---------------|
| 1 | PCMark Scores | PASS | 2543 |
| 2 | Essentials | PASS | 6202 |
| 3 | Productivity | PASS | 5373 |
| 4 | Digital Content Creation | PASS | 1341 |

| |
|--|
| Test Environment |
| Intel(R) Celeron(R) 6900E 3.00GHz DSL DDR5 4800 32GB (SEC 240 K4RAH0B 6VB BCQK) ADATA DDR5 4800 16GB (SpecTek PT008-48B F 2144) acpi M2PDD-8L 1TB |

Windows 10 64-bit

| Item | Weighted Suite | Result | Remark |
|-------------|---------------------------------|---------------|---------------|
| 1 | PCMark Scores | PASS | 2538 |
| 2 | Essentials | PASS | 6128 |
| 3 | Productivity | PASS | 5362 |
| 4 | Digital Content Creation | PASS | 1352 |

| |
|--|
| Test Environment |
| Intel(R) Celeron(R) 6900E 3.00GHz innodisk DDR5 4800 32GB (SEC 149 K4RAH0B 6VB BCQK) crucial DDR5 4800 32GB (Micro 2BA45 DB8NJ) acpi M2PDD-8L 1TB |

Windows 10 64-bit

| Item | Weighted Suite | Result | Remark |
|-------------|---------------------------------|---------------|---------------|
| 1 | PCMark Scores | PASS | 2523 |
| 2 | Essentials | PASS | 6032 |
| 3 | Productivity | PASS | 5355 |
| 4 | Digital Content Creation | PASS | 1343 |

| |
|---|
| Test Environment |
| Intel(R) Celeron(R) 6900E 3.00GHz innodisk DDR5 4800 32GB (SEC 149 K4RAH0B 6VB BCQK) ADATA DDR5 4800 16GB (SpecTek PT008-48B F 2144) acpi M2PDD-8L 1TB |

Windows 10 64-bit

| Item | Weighted Suite | Result | Remark |
|-------------|---------------------------------|---------------|---------------|
| 1 | PCMark Scores | PASS | 2537 |
| 2 | Essentials | PASS | 6100 |
| 3 | Productivity | PASS | 5409 |
| 4 | Digital Content Creation | PASS | 1344 |

| |
|--|
| Test Environment |
| Intel(R) Core(TM) i5-12500 4.60GHz crucial DDR5 4800 32GB*2 (Micro 2BA45 DB8NJ) acpi M2PDD-8L 1TB |

Windows 10 64-bit

| Item | Weighted Suite | Result | Remark |
|-------------|---------------------------------|---------------|---------------|
| 1 | PCMark Scores | PASS | 3862 |
| 2 | Essentials | PASS | 9247 |
| 3 | Productivity | PASS | 6047 |
| 4 | Digital Content Creation | PASS | 2797 |

| |
|--|
| Test Environment |
| Intel(R) Core(TM) i5-12500 4.60GHz crucial DDR5 4800 32GB (Micro 2BA45 DB8NJ) ADATA DDR5 4800 16GB (SpecTek PT008-48B F 2144) acpi M2PDD-8L 1TB |

Windows 10 64-bit

| Item | Weighted Suite | Result | Remark |
|-------------|---------------------------------|---------------|---------------|
| 1 | PCMark Scores | PASS | 4089 |
| 2 | Essentials | PASS | 9398 |
| 3 | Productivity | PASS | 7046 |
| 4 | Digital Content Creation | PASS | 2802 |

| |
|--|
| Test Environment |
| Intel(R) Core(TM) i5-12500 4.60GHz crucial DDR5 4800 32GB (Micro 2BA45 DB8NJ) acpi M2PDD-8L 1TB |

Windows 10 64-bit

| Item | Weighted Suite | Result | Remark |
|-------------|---------------------------------|---------------|---------------|
| 1 | PCMark Scores | PASS | 4120 |
| 2 | Essentials | PASS | 9680 |
| 3 | Productivity | PASS | 7009 |
| 4 | Digital Content Creation | PASS | 2798 |

| |
|---|
| Test Environment |
| Intel(R) Core(TM) i5-12500 4.60GHz ADATA DDR5 4800 16GB*2 (SpecTek PT008-48B F 2144) acpi M2PDD-8L 1TB |

Windows 10 64-bit

| Item | Weighted Suite | Result | Remark |
|-------------|---------------------------------|---------------|---------------|
| 1 | PCMark Scores | PASS | 4094 |
| 2 | Essentials | PASS | 9445 |
| 3 | Productivity | PASS | 7044 |
| 4 | Digital Content Creation | PASS | 2801 |

| |
|---|
| Test Environment |
| Intel(R) Core(TM) i5-12500 4.60GHz ADATA DDR5 4800 16GB (SpecTek PT008-48B F 2144) acpi M2PDD-8L 1TB |

Windows 10 64-bit

| Item | Weighted Suite | Result | Remark |
|-------------|---------------------------------|---------------|---------------|
| 1 | PCMark Scores | PASS | 4081 |
| 2 | Essentials | PASS | 9295 |
| 3 | Productivity | PASS | 7026 |
| 4 | Digital Content Creation | PASS | 2795 |

| |
|--|
| Test Environment |
| Intel(R) Core(TM) i5-12500 4.60GHz crucial DDR5 4800 32GB*2 (Micro 2BA45 DB8NJ) acpi M2PDD-8L 1TB |

Windows 10 64-bit

| Item | Weighted Suite | Result | Remark |
|-------------|---------------------------------|---------------|---------------|
| 1 | PCMark Scores | PASS | 3862 |
| 2 | Essentials | PASS | 9247 |
| 3 | Productivity | PASS | 6047 |
| 4 | Digital Content Creation | PASS | 2797 |

| |
|---|
| Test Environment |
| Intel(R) Core(TM) i5-12500 4.60GHz crucial DDR5 4800 32GB (Micro 2BA45 DB8NJ) AADATA DDR5 4800 16GB (SpecTek PT008-48B F 2144) acpi M2PDD-8L 1TB |

Windows 10 64-bit

| Item | Weighted Suite | Result | Remark |
|-------------|---------------------------------|---------------|---------------|
| 1 | PCMark Scores | PASS | 4089 |
| 2 | Essentials | PASS | 9398 |
| 3 | Productivity | PASS | 7046 |
| 4 | Digital Content Creation | PASS | 2802 |

| |
|--|
| Test Environment |
| Intel(R) Core(TM) i5-12500 4.60GHz crucial DDR5 4800 32GB (Micro 2BA45 DB8NJ) acpi M2PDD-8L 1TB |

Windows 10 64-bit

| Item | Weighted Suite | Result | Remark |
|-------------|---------------------------------|---------------|---------------|
| 1 | PCMark Scores | PASS | 4120 |
| 2 | Essentials | PASS | 9680 |
| 3 | Productivity | PASS | 7009 |
| 4 | Digital Content Creation | PASS | 2798 |

| |
|---|
| Test Environment |
| Intel(R) Core(TM) i5-12500 4.60GHz ADATA DDR5 4800 16GB*2 (SpecTek PT008-48B F 2144) acpi M2PDD-8L 1TB |

Windows 10 64-bit

| Item | Weighted Suite | Result | Remark |
|-------------|---------------------------------|---------------|---------------|
| 1 | PCMark Scores | PASS | 4094 |
| 2 | Essentials | PASS | 9445 |
| 3 | Productivity | PASS | 7044 |
| 4 | Digital Content Creation | PASS | 2801 |

| |
|---|
| Test Environment |
| Intel(R) Core(TM) i5-12500 4.60GHz ADATA DDR5 4800 16GB (SpecTek PT008-48B F 2144) acpi M2PDD-8L 1TB |

Windows 10 64-bit

| Item | Weighted Suite | Result | Remark |
|-------------|---------------------------------|---------------|---------------|
| 1 | PCMark Scores | PASS | 4081 |
| 2 | Essentials | PASS | 9295 |
| 3 | Productivity | PASS | 7026 |
| 4 | Digital Content Creation | PASS | 2795 |

| |
|--|
| Test Environment |
| Intel(R) Core(TM) i5-12500 4.60GHz crucial DDR5 4800 32GB*2 (Micro 2BA45 DB8NJ) acpi M2PDD-8L 1TB |

Windows 10 64-bit

| Item | Weighted Suite | Result | Remark |
|-------------|---------------------------------|---------------|---------------|
| 1 | PCMark Scores | PASS | 3862 |
| 2 | Essentials | PASS | 9247 |
| 3 | Productivity | PASS | 6047 |
| 4 | Digital Content Creation | PASS | 2797 |

| |
|--|
| Test Environment |
| Intel(R) Core(TM) i5-12500 4.60GHz crucial DDR5 4800 32GB (Micro 2BA45 DB8NJ) ADATA DDR5 4800 16GB (SpecTek PT008-48B F 2144) acpi M2PDD-8L 1TB |

Windows 10 64-bit

| Item | Weighted Suite | Result | Remark |
|-------------|---------------------------------|---------------|---------------|
| 1 | PCMark Scores | PASS | 4089 |
| 2 | Essentials | PASS | 9398 |
| 3 | Productivity | PASS | 7046 |
| 4 | Digital Content Creation | PASS | 2802 |

| |
|--|
| Test Environment |
| Intel(R) Core(TM) i5-12500 4.60GHz crucial DDR5 4800 32GB (Micro 2BA45 DB8NJ) acpi M2PDD-8L 1TB |

Windows 10 64-bit

| Item | Weighted Suite | Result | Remark |
|-------------|---------------------------------|---------------|---------------|
| 1 | PCMark Scores | PASS | 4120 |
| 2 | Essentials | PASS | 9680 |
| 3 | Productivity | PASS | 7009 |
| 4 | Digital Content Creation | PASS | 2798 |

| |
|---|
| Test Environment |
| Intel(R) Core(TM) i5-12500 4.60GHz ADATA DDR5 4800 16GB*2 (SpecTek PT008-48B F 2144) acpi M2PDD-8L 1TB |

Windows 10 64-bit

| Item | Weighted Suite | Result | Remark |
|-------------|---------------------------------|---------------|---------------|
| 1 | PCMark Scores | PASS | 4094 |
| 2 | Essentials | PASS | 9445 |
| 3 | Productivity | PASS | 7044 |
| 4 | Digital Content Creation | PASS | 2801 |

| |
|---|
| Test Environment |
| Intel(R) Core(TM) i5-12500 4.60GHz ADATA DDR5 4800 16GB (SpecTek PT008-48B F 2144) acpi M2PDD-8L 1TB |

Windows 10 64-bit

| Item | Weighted Suite | Result | Remark |
|-------------|---------------------------------|---------------|---------------|
| 1 | PCMark Scores | PASS | 4081 |
| 2 | Essentials | PASS | 9295 |
| 3 | Productivity | PASS | 7026 |
| 4 | Digital Content Creation | PASS | 2795 |

| |
|---|
| Test Environment |
| Intel(R) Core(TM) i5-12500 4.60GHz DSL DDR5 4800 32GB*2 (SEC 240 K4RAH0B 6VB BCQK) acpi M2PDD-8L 1TB |

Windows 10 64-bit

| Item | Weighted Suite | Result | Remark |
|-------------|---------------------------------|---------------|---------------|
| 1 | PCMark Scores | PASS | 4096 |
| 2 | Essentials | PASS | 9544 |
| 3 | Productivity | PASS | 7020 |
| 4 | Digital Content Creation | PASS | 2784 |

| |
|---|
| Test Environment |
| Intel(R) Core(TM) i5-12500 4.60GHz DSL DDR5 4800 32GB (SEC 240 K4RAH0B 6VB BCQK) acpi M2PDD-8L 1TB |

Windows 10 64-bit

| Item | Weighted Suite | Result | Remark |
|-------------|---------------------------------|---------------|---------------|
| 1 | PCMark Scores | PASS | 4078 |
| 2 | Essentials | PASS | 9433 |
| 3 | Productivity | PASS | 6991 |
| 4 | Digital Content Creation | PASS | 2791 |

| |
|--|
| Test Environment |
| Intel(R) Core(TM) i5-12500 4.60GHz innodisk DDR5 4800 32GB*2 (SEC 149 K4RAH0B 6VB BCQK) acpi M2PDD-8L 1TB |

Windows 10 64-bit

| Item | Weighted Suite | Result | Remark |
|-------------|---------------------------------|---------------|---------------|
| 1 | PCMark Scores | PASS | 4092 |
| 2 | Essentials | PASS | 9461 |
| 3 | Productivity | PASS | 7034 |
| 4 | Digital Content Creation | PASS | 2795 |

| |
|--|
| Test Environment |
| Intel(R) Core(TM) i5-12500 4.60GHz innodisk DDR5 4800 32GB (SEC 149 K4RAH0B 6VB BCQK) acpi M2PDD-8L 1TB |

Windows 10 64-bit

| Item | Weighted Suite | Result | Remark |
|-------------|---------------------------------|---------------|---------------|
| 1 | PCMark Scores | PASS | 4115 |
| 2 | Essentials | PASS | 9801 |
| 3 | Productivity | PASS | 6897 |
| 4 | Digital Content Creation | PASS | 2798 |

| |
|--|
| Test Environment |
| Intel(R) Core(TM) i5-12500 4.60GHz DSL DDR5 4800 32GB (SEC 240 K4RAH0B 6VB BCQK) innodisk DDR5 4800 32GB (SEC 149 K4RAH0B 6VB BCQK) acpi M2PDD-8L 1TB |

Windows 10 64-bit

| Item | Weighted Suite | Result | Remark |
|-------------|---------------------------------|---------------|---------------|
| 1 | PCMark Scores | PASS | 4090 |
| 2 | Essentials | PASS | 9536 |
| 3 | Productivity | PASS | 6962 |
| 4 | Digital Content Creation | PASS | 2798 |

| |
|--|
| Test Environment |
| Intel(R) Core(TM) i5-12500 4.60GHz DSL DDR5 4800 32GB (SEC 240 K4RAH0B 6VB BCQK) crucial DDR5 4800 32GB (Micro 2BA45 DB8NJ) acpi M2PDD-8L 1TB |

Windows 10 64-bit

| Item | Weighted Suite | Result | Remark |
|-------------|---------------------------------|---------------|---------------|
| 1 | PCMark Scores | PASS | 4077 |
| 2 | Essentials | PASS | 9482 |
| 3 | Productivity | PASS | 6953 |
| 4 | Digital Content Creation | PASS | 2791 |

| |
|---|
| Test Environment |
| Intel(R) Core(TM) i5-12500 4.60GHz DSL DDR5 4800 32GB (SEC 240 K4RAH0B 6VB BCQK) ADATA DDR5 4800 16GB*2 (SpecTek PT008-48B F 2144) acpi M2PDD-8L 1TB |

Windows 10 64-bit

| Item | Weighted Suite | Result | Remark |
|-------------|---------------------------------|---------------|---------------|
| 1 | PCMark Scores | PASS | 4073 |
| 2 | Essentials | PASS | 9443 |
| 3 | Productivity | PASS | 6937 |
| 4 | Digital Content Creation | PASS | 2799 |

| |
|---|
| Test Environment |
| Intel(R) Core(TM) i5-12500 4.60GHz innodisk DDR5 4800 32GB (SEC 149 K4RAH0B 6VB BCQK) crucial DDR5 4800 32GB (Micro 2BA45 DB8NJ) acpi M2PDD-8L 1TB |

Windows 10 64-bit

| Item | Weighted Suite | Result | Remark |
|-------------|---------------------------------|---------------|---------------|
| 1 | PCMark Scores | PASS | 4076 |
| 2 | Essentials | PASS | 9443 |
| 3 | Productivity | PASS | 6954 |
| 4 | Digital Content Creation | PASS | 2799 |

| |
|--|
| Test Environment |
| Intel(R) Core(TM) i5-12500 4.60GHz innodisk DDR5 4800 32GB (SEC 149 K4RAH0B 6VB BCQK) ADATA DDR5 4800 16GB (SpecTek PT008-48B F 2144) acpi M2PDD-8L 1TB |

Windows 10 64-bit

| Item | Weighted Suite | Result | Remark |
|-------------|---------------------------------|---------------|---------------|
| 1 | PCMark Scores | PASS | 4073 |
| 2 | Essentials | PASS | 9412 |
| 3 | Productivity | PASS | 7000 |
| 4 | Digital Content Creation | PASS | 2783 |

| |
|---|
| Test Environment |
| Intel(R) Core(TM) i7-12700E 4.80GHz crucial DDR5 4800 32GB*2 (Micro 2BA45 DB8NJ) acpi M2PDD-8L 1TB |

Windows 10 64-bit

| Item | Weighted Suite | Result | Remark |
|-------------|---------------------------------|---------------|---------------|
| 1 | PCMark Scores | PASS | 3615 |
| 2 | Essentials | PASS | 9416 |
| 3 | Productivity | PASS | 6103 |
| 4 | Digital Content Creation | PASS | 2232 |

| |
|---|
| Test Environment |
| Intel(R) Core(TM) i7-12700E 4.80GHz crucial DDR5 4800 32GB (Micro 2BA45 DB8NJ) ADATA DDR5 4800 16GB (SpecTek PT008-48B F 2144) acpi M2PDD-8L 1TB |

Windows 10 64-bit

| Item | Weighted Suite | Result | Remark |
|-------------|---------------------------------|---------------|---------------|
| 1 | PCMark Scores | PASS | 3835 |
| 2 | Essentials | PASS | 9814 |
| 3 | Productivity | PASS | 6981 |
| 4 | Digital Content Creation | PASS | 2235 |

| |
|---|
| Test Environment |
| Intel(R) Core(TM) i7-12700E 4.80GHz crucial DDR5 4800 32GB (Micro 2BA45 DB8NJ) acpi M2PDD-8L 1TB |

Windows 10 64-bit

| Item | Weighted Suite | Result | Remark |
|-------------|---------------------------------|---------------|---------------|
| 1 | PCMark Scores | PASS | 3791 |
| 2 | Essentials | PASS | 9523 |
| 3 | Productivity | PASS | 6984 |
| 4 | Digital Content Creation | PASS | 2224 |

| |
|--|
| Test Environment |
| Intel(R) Core(TM) i7-12700E 4.80GHz ADATA DDR5 4800 16GB*2 (SpecTek PT008-48B F 2144) acpi M2PDD-8L 1TB |

Windows 10 64-bit

| Item | Weighted Suite | Result | Remark |
|-------------|--------------------------|---------------|---------------|
| 1 | PCMark Scores | PASS | 3834 |
| 2 | Essentials | PASS | 9662 |
| 3 | Productivity | PASS | 7065 |
| 4 | Digital Content Creation | PASS | 2241 |

| |
|--|
| Test Environment |
| Intel(R) Core(TM) i7-12700E 4.80GHz ADATA DDR5 4800 16GB (SpecTek PT008-48B F 2144) acpi M2PDD-8L 1TB |

Windows 10 64-bit

| Item | Weighted Suite | Result | Remark |
|-------------|--------------------------|---------------|---------------|
| 1 | PCMark Scores | PASS | 3832 |
| 2 | Essentials | PASS | 9877 |
| 3 | Productivity | PASS | 6956 |
| 4 | Digital Content Creation | PASS | 2223 |

| |
|--|
| Test Environment |
| Intel(R) Core(TM) i7-12700E 4.80GHz DSL DDR5 4800 32GB*2 (SEC 240 K4RAH0B 6VB BCQK) acpi M2PDD-8L 1TB |

Windows 10 64-bit

| Item | Weighted Suite | Result | Remark |
|-------------|---------------------------------|---------------|---------------|
| 1 | PCMark Scores | PASS | 3832 |
| 2 | Essentials | PASS | 9506 |
| 3 | Productivity | PASS | 7197 |
| 4 | Digital Content Creation | PASS | 2232 |

| |
|--|
| Test Environment |
| Intel(R) Core(TM) i7-12700E 4.80GHz DSL DDR5 4800 32GB (SEC 240 K4RAH0B 6VB BCQK) acpi M2PDD-8L 1TB |

Windows 10 64-bit

| Item | Weighted Suite | Result | Remark |
|-------------|---------------------------------|---------------|---------------|
| 1 | PCMark Scores | PASS | 3807 |
| 2 | Essentials | PASS | 9657 |
| 3 | Productivity | PASS | 6950 |
| 4 | Digital Content Creation | PASS | 2233 |

| |
|---|
| Test Environment |
| Intel(R) Core(TM) i7-12700E 4.80GHz innodisk DDR5 4800 32GB*2 (SEC 149 K4RAH0B 6VB BCQK) acpi M2PDD-8L 1TB |

Windows 10 64-bit

| Item | Weighted Suite | Result | Remark |
|-------------|---------------------------------|---------------|---------------|
| 1 | PCMark Scores | PASS | 3795 |
| 2 | Essentials | PASS | 9544 |
| 3 | Productivity | PASS | 6948 |
| 4 | Digital Content Creation | PASS | 2238 |

| |
|---|
| Test Environment |
| Intel(R) Core(TM) i7-12700E 4.80GHz innodisk DDR5 4800 32GB (SEC 149 K4RAH0B 6VB BCQK) acpi M2PDD-8L 1TB |

Windows 10 64-bit

| Item | Weighted Suite | Result | Remark |
|-------------|---------------------------------|---------------|---------------|
| 1 | PCMark Scores | PASS | 3795 |
| 2 | Essentials | PASS | 9626 |
| 3 | Productivity | PASS | 6887 |
| 4 | Digital Content Creation | PASS | 2238 |

| |
|---|
| Test Environment |
| Intel(R) Core(TM) i7-12700E 4.80GHz DSL DDR5 4800 32GB (SEC 240 K4RAH0B 6VB BCQK) innodisk DDR5 4800 32GB (SEC 149 K4RAH0B 6VB BCQK) acpi M2PDD-8L 1TB |

Windows 10 64-bit

| Item | Weighted Suite | Result | Remark |
|-------------|---------------------------------|---------------|---------------|
| 1 | PCMark Scores | PASS | 3805 |
| 2 | Essentials | PASS | 9639 |
| 3 | Productivity | PASS | 6959 |
| 4 | Digital Content Creation | PASS | 2229 |

| |
|---|
| Test Environment |
| Intel(R) Core(TM) i7-12700E 4.80GHz DSL DDR5 4800 32GB (SEC 240 K4RAH0B 6VB BCQK) crucial DDR5 4800 32GB (Micro 2BA45 DB8NJ) acpi M2PDD-8L 1TB |

Windows 10 64-bit

| Item | Weighted Suite | Result | Remark |
|-------------|---------------------------------|---------------|---------------|
| 1 | PCMark Scores | PASS | 3808 |
| 2 | Essentials | PASS | 9497 |
| 3 | Productivity | PASS | 7049 |
| 4 | Digital Content Creation | PASS | 2240 |

| |
|--|
| Test Environment |
| Intel(R) Core(TM) i7-12700E 4.80GHz DSL DDR5 4800 32GB (SEC 240 K4RAH0B 6VB BCQK) ADATA DDR5 4800 16GB*2 (SpecTek PT008-48B F 2144) acpi M2PDD-8L 1TB |

Windows 10 64-bit

| Item | Weighted Suite | Result | Remark |
|-------------|---------------------------------|---------------|---------------|
| 1 | PCMark Scores | PASS | 3769 |
| 2 | Essentials | PASS | 9483 |
| 3 | Productivity | PASS | 6880 |
| 4 | Digital Content Creation | PASS | 2228 |

| |
|--|
| Test Environment |
| Intel(R) Core(TM) i7-12700E 4.80GHz innodisk DDR5 4800 32GB (SEC 149 K4RAH0B 6VB BCQK) crucial DDR5 4800 32GB (Micro 2BA45 DB8NJ) acpi M2PDD-8L 1TB |

Windows 10 64-bit

| Item | Weighted Suite | Result | Remark |
|-------------|---------------------------------|---------------|---------------|
| 1 | PCMark Scores | PASS | 3803 |
| 2 | Essentials | PASS | 9591 |
| 3 | Productivity | PASS | 6597 |
| 4 | Digital Content Creation | PASS | 2238 |

| |
|---|
| Test Environment |
| Intel(R) Core(TM) i7-12700E 4.80GHz innodisk DDR5 4800 32GB (SEC 149 K4RAH0B 6VB BCQK) ADATA DDR5 4800 16GB*2 (SpecTek PT008-48B F 2144) acpi M2PDD-8L 1TB |

Windows 10 64-bit

| Item | Weighted Suite | Result | Remark |
|-------------|---------------------------------|---------------|---------------|
| 1 | PCMark Scores | PASS | 3790 |
| 2 | Essentials | PASS | 9569 |
| 3 | Productivity | PASS | 6928 |
| 4 | Digital Content Creation | PASS | 2229 |

| |
|--|
| Test Environment |
| Intel(R) Core(TM) i9-12900TE 4.80GHz crucial DDR5 4800 32GB*2 (Micro 2BA45 DB8NJ) acpi M2PDD-8L 1TB |

Windows 10 64-bit

| Item | Weighted Suite | Result | Remark |
|-------------|---------------------------------|---------------|---------------|
| 1 | PCMark Scores | PASS | 3554 |
| 2 | Essentials | PASS | 8421 |
| 3 | Productivity | PASS | 5999 |
| 4 | Digital Content Creation | PASS | 2413 |

| |
|--|
| Test Environment |
| Intel(R) Core(TM) i9-12900TE 4.80GHz crucial DDR5 4800 32GB (Micro 2BA45 DB8NJ) ADATA DDR5 4800 16GB (SpecTek PT008-48B F 2144) acpi M2PDD-8L 1TB |

Windows 10 64-bit

| Item | Weighted Suite | Result | Remark |
|-------------|---------------------------------|---------------|---------------|
| 1 | PCMark Scores | PASS | 3610 |
| 2 | Essentials | PASS | 8571 |
| 3 | Productivity | PASS | 5955 |
| 4 | Digital Content Creation | PASS | 2501 |

| |
|--|
| Test Environment |
| Intel(R) Core(TM) i9-12900TE 4.80GHz crucial DDR5 4800 32GB (Micro 2BA45 DB8NJ) acpi M2PDD-8L 1TB |

Windows 10 64-bit

| Item | Weighted Suite | Result | Remark |
|-------------|---------------------------------|---------------|---------------|
| 1 | PCMark Scores | PASS | 3563 |
| 2 | Essentials | PASS | 8550 |
| 3 | Productivity | PASS | 5981 |
| 4 | Digital Content Creation | PASS | 2402 |

| |
|---|
| Test Environment |
| Intel(R) Core(TM) i9-12900TE 4.80GHz ADATA DDR5 4800 16GB*2 (SpecTek PT008-48B F 2144) acpi M2PDD-8L 1TB |

Windows 10 64-bit

| Item | Weighted Suite | Result | Remark |
|-------------|---------------------------------|---------------|---------------|
| 1 | PCMark Scores | PASS | 3602 |
| 2 | Essentials | PASS | 8679 |
| 3 | Productivity | PASS | 6096 |
| 4 | Digital Content Creation | PASS | 2399 |

| |
|---|
| Test Environment |
| Intel(R) Core(TM) i9-12900TE 4.80GHz ADATA DDR5 4800 16GB (SpecTek PT008-48B F 2144) acpi M2PDD-8L 1TB |

Windows 10 64-bit

| Item | Weighted Suite | Result | Remark |
|-------------|---------------------------------|---------------|---------------|
| 1 | PCMark Scores | PASS | 3640 |
| 2 | Essentials | PASS | 8995 |
| 3 | Productivity | PASS | 6048 |
| 4 | Digital Content Creation | PASS | 2406 |

| |
|---|
| Test Environment |
| Intel(R) Core(TM) i9-12900TE 4.80GHz DSL DDR5 4800 32GB*2 (SEC 240 K4RAH0B 6VB BCQK) acpi M2PDD-8L 1TB |

Windows 10 64-bit

| Item | Weighted Suite | Result | Remark |
|-------------|---------------------------------|---------------|---------------|
| 1 | PCMark Scores | PASS | 3579 |
| 2 | Essentials | PASS | 8593 |
| 3 | Productivity | PASS | 6042 |
| 4 | Digital Content Creation | PASS | 2398 |

| |
|---|
| Test Environment |
| Intel(R) Core(TM) i9-12900TE 4.80GHz DSL DDR5 4800 32GB (SEC 240 K4RAH0B 6VB BCQK) acpi M2PDD-8L 1TB |

Windows 10 64-bit

| Item | Weighted Suite | Result | Remark |
|-------------|---------------------------------|---------------|---------------|
| 1 | PCMark Scores | PASS | 3645 |
| 2 | Essentials | PASS | 8951 |
| 3 | Productivity | PASS | 6085 |
| 4 | Digital Content Creation | PASS | 2413 |

| |
|--|
| Test Environment |
| Intel(R) Core(TM) i9-12900TE 4.80GHz innodisk DDR5 4800 32GB*2 (SEC 149 K4RAH0B 6VB BCQK) acpi M2PDD-8L 1TB |

Windows 10 64-bit

| Item | Weighted Suite | Result | Remark |
|-------------|---------------------------------|---------------|---------------|
| 1 | PCMark Scores | PASS | 3591 |
| 2 | Essentials | PASS | 8604 |
| 3 | Productivity | PASS | 6070 |
| 4 | Digital Content Creation | PASS | 2407 |

| |
|--|
| Test Environment |
| Intel(R) Core(TM) i9-12900TE 4.80GHz innodisk DDR5 4800 32GB (SEC 149 K4RAH0B 6VB BCQK) acpi M2PDD-8L 1TB |

Windows 10 64-bit

| Item | Weighted Suite | Result | Remark |
|-------------|---------------------------------|---------------|---------------|
| 1 | PCMark Scores | PASS | 3597 |
| 2 | Essentials | PASS | 8658 |
| 3 | Productivity | PASS | 6026 |
| 4 | Digital Content Creation | PASS | 2422 |

| |
|--|
| Test Environment |
| Intel(R) Core(TM) i9-12900TE 4.80GHz DSL DDR5 4800 32GB (SEC 240 K4RAH0B 6VB BCQK) crucial DDR5 4800 32GB (Micro 2BA45 DB8NJ) acpi M2PDD-8L 1TB |

Windows 10 64-bit

| Item | Weighted Suite | Result | Remark |
|-------------|---------------------------------|---------------|---------------|
| 1 | PCMark Scores | PASS | 3655 |
| 2 | Essentials | PASS | 8991 |
| 3 | Productivity | PASS | 6085 |
| 4 | Digital Content Creation | PASS | 2423 |

| |
|---|
| Test Environment |
| Intel(R) Core(TM) i9-12900TE 4.80GHz DSL DDR5 4800 32GB (SEC 240 K4RAH0B 6VB BCQK) ADATA DDR5 4800 16GB (SpecTek PT008-48B F 2144) acpi M2PDD-8L 1TB |

Windows 10 64-bit

| Item | Weighted Suite | Result | Remark |
|-------------|---------------------------------|---------------|---------------|
| 1 | PCMark Scores | PASS | 3593 |
| 2 | Essentials | PASS | 8618 |
| 3 | Productivity | PASS | 6070 |
| 4 | Digital Content Creation | PASS | 2408 |

| |
|---|
| Test Environment |
| Intel(R) Core(TM) i9-12900TE 4.80GHz innodisk DDR5 4800 32GB (SEC 149 K4RAH0B 6VB BCQK) crucial DDR5 4800 32GB (Micro 2BA45 DB8NJ) acpi M2PDD-8L 1TB |

Windows 10 64-bit

| Item | Weighted Suite | Result | Remark |
|-------------|---------------------------------|---------------|---------------|
| 1 | PCMark Scores | PASS | 3601 |
| 2 | Essentials | PASS | 8687 |
| 3 | Productivity | PASS | 6056 |
| 4 | Digital Content Creation | PASS | 2410 |

| |
|--|
| Test Environment |
| Intel(R) Core(TM) i9-12900TE 4.80GHz innodisk DDR5 4800 32GB (SEC 149 K4RAH0B 6VB BCQK) ADATA DDR5 4800 16GB (SpecTek PT008-48B F 2144) acpi M2PDD-8L 1TB |

Windows 10 64-bit

| Item | Weighted Suite | Result | Remark |
|-------------|---------------------------------|---------------|---------------|
| 1 | PCMark Scores | PASS | 3591 |
| 2 | Essentials | PASS | 8643 |
| 3 | Productivity | PASS | 6042 |
| 4 | Digital Content Creation | PASS | 2408 |

| |
|--|
| Test Environment |
| Intel(R) Core(TM) i9-12900 5.10GHz crucial DDR5 4800 32GB*2 (Micro 2BA45 DB8NJ) acpi M2PDD-8L 1TB |

Windows 10 64-bit

| Item | Weighted Suite | Result | Remark |
|-------------|---------------------------------|---------------|---------------|
| 1 | PCMark Scores | PASS | 4054 |
| 2 | Essentials | PASS | 9646 |
| 3 | Productivity | PASS | 7210 |
| 4 | Digital Content Creation | PASS | 2601 |

| |
|--|
| Test Environment |
| Intel(R) Core(TM) i9-12900 5.10GHz crucial DDR5 4800 32GB (Micro 2BA45 DB8NJ) ADATA DDR5 4800 16GB (SpecTek PT008-48B F 2144) acpi M2PDD-8L 1TB |

Windows 10 64-bit

| Item | Weighted Suite | Result | Remark |
|-------------|---------------------------------|---------------|---------------|
| 1 | PCMark Scores | PASS | 4096 |
| 2 | Essentials | PASS | 10125 |
| 3 | Productivity | PASS | 7100 |
| 4 | Digital Content Creation | PASS | 2594 |

| |
|--|
| Test Environment |
| Intel(R) Core(TM) i9-12900 5.10GHz crucial DDR5 4800 32GB (Micro 2BA45 DB8NJ) acpi M2PDD-8L 1TB |

Windows 10 64-bit

| Item | Weighted Suite | Result | Remark |
|-------------|---------------------------------|---------------|---------------|
| 1 | PCMark Scores | PASS | 4111 |
| 2 | Essentials | PASS | 10055 |
| 3 | Productivity | PASS | 7224 |
| 4 | Digital Content Creation | PASS | 2596 |

| |
|---|
| Test Environment |
| Intel(R) Core(TM) i9-12900 5.10GHz ADATA DDR5 4800 16GB*2 (SpecTek PT008-48B F 2144) acpi M2PDD-8L 1TB |

Windows 10 64-bit

| Item | Weighted Suite | Result | Remark |
|-------------|---------------------------------|---------------|---------------|
| 1 | PCMark Scores | PASS | 4108 |
| 2 | Essentials | PASS | 10059 |
| 3 | Productivity | PASS | 7180 |
| 4 | Digital Content Creation | PASS | 2606 |

| |
|---|
| Test Environment |
| Intel(R) Core(TM) i9-12900 5.10GHz ADATA DDR5 4800 16GB (SpecTek PT008-48B F 2144) acpi M2PDD-8L 1TB |

Windows 10 64-bit

| Item | Weighted Suite | Result | Remark |
|-------------|---------------------------------|---------------|---------------|
| 1 | PCMark Scores | PASS | 4078 |
| 2 | Essentials | PASS | 9922 |
| 3 | Productivity | PASS | 7198 |
| 4 | Digital Content Creation | PASS | 2578 |

| |
|---|
| Test Environment |
| Intel(R) Core(TM) i9-12900 5.10GHz DSL DDR5 4800 32GB*2 (SEC 240 K4RAH0B 6VB BCQK) acpi M2PDD-8L 1TB |

Windows 10 64-bit

| Item | Weighted Suite | Result | Remark |
|-------------|---------------------------------|---------------|---------------|
| 1 | PCMark Scores | PASS | 4048 |
| 2 | Essentials | PASS | 9738 |
| 3 | Productivity | PASS | 7116 |
| 4 | Digital Content Creation | PASS | 2600 |

| |
|---|
| Test Environment |
| Intel(R) Core(TM) i9-12900 5.10GHz DSL DDR5 4800 32GB (SEC 240 K4RAH0B 6VB BCQK) acpi M2PDD-8L 1TB |

Windows 10 64-bit

| Item | Weighted Suite | Result | Remark |
|-------------|---------------------------------|---------------|---------------|
| 1 | PCMark Scores | PASS | 4038 |
| 2 | Essentials | PASS | 9772 |
| 3 | Productivity | PASS | 7030 |
| 4 | Digital Content Creation | PASS | 2601 |

| |
|--|
| Test Environment |
| Intel(R) Core(TM) i9-12900 5.10GHz innodisk DDR5 4800 32GB*2 (SEC 149 K4RAH0B 6VB BCQK) acpi M2PDD-8L 1TB |

Windows 10 64-bit

| Item | Weighted Suite | Result | Remark |
|-------------|---------------------------------|---------------|---------------|
| 1 | PCMark Scores | PASS | 4056 |
| 2 | Essentials | PASS | 9771 |
| 3 | Productivity | PASS | 7124 |
| 4 | Digital Content Creation | PASS | 2601 |

| |
|--|
| Test Environment |
| Intel(R) Core(TM) i9-12900 5.10GHz innodisk DDR5 4800 32GB (SEC 149 K4RAH0B 6VB BCQK) acpi M2PDD-8L 1TB |

Windows 10 64-bit

| Item | Weighted Suite | Result | Remark |
|-------------|---------------------------------|---------------|---------------|
| 1 | PCMark Scores | PASS | 4059 |
| 2 | Essentials | PASS | 9817 |
| 3 | Productivity | PASS | 7122 |
| 4 | Digital Content Creation | PASS | 2597 |

| |
|--|
| Test Environment |
| Intel(R) Core(TM) i9-12900 5.10GHz DSL DDR5 4800 32GB (SEC 240 K4RAH0B 6VB BCQK) innodisk DDR5 4800 32GB (SEC 149 K4RAH0B 6VB BCQK) acpi M2PDD-8L 1TB |

Windows 10 64-bit

| Item | Weighted Suite | Result | Remark |
|-------------|---------------------------------|---------------|---------------|
| 1 | PCMark Scores | PASS | 4045 |
| 2 | Essentials | PASS | 9695 |
| 3 | Productivity | PASS | 7118 |
| 4 | Digital Content Creation | PASS | 2603 |

| |
|--|
| Test Environment |
| Intel(R) Core(TM) i9-12900 5.10GHz DSL DDR5 4800 32GB (SEC 240 K4RAH0B 6VB BCQK) crucial DDR5 4800 32GB (Micro 2BA45 DB8NJ) acpi M2PDD-8L 1TB |

Windows 10 64-bit

| Item | Weighted Suite | Result | Remark |
|-------------|---------------------------------|---------------|---------------|
| 1 | PCMark Scores | PASS | 4056 |
| 2 | Essentials | PASS | 9770 |
| 3 | Productivity | PASS | 7144 |
| 4 | Digital Content Creation | PASS | 2596 |

| |
|---|
| Test Environment |
| Intel(R) Core(TM) i9-12900 5.10GHz DSL DDR5 4800 32GB (SEC 240 K4RAH0B 6VB BCQK) ADATA DDR5 4800 16GB (SpecTek PT008-48B F 2144) acpi M2PDD-8L 1TB |

Windows 10 64-bit

| Item | Weighted Suite | Result | Remark |
|-------------|---------------------------------|---------------|---------------|
| 1 | PCMark Scores | PASS | 4050 |
| 2 | Essentials | PASS | 9763 |
| 3 | Productivity | PASS | 7101 |
| 4 | Digital Content Creation | PASS | 2601 |

| |
|---|
| Test Environment |
| Intel(R) Core(TM) i9-12900 5.10GHz innodisk DDR5 4800 32GB (SEC 149 K4RAH0B 6VB BCQK) crucial DDR5 4800 32GB (Micro 2BA45 DB8NJ) acpi M2PDD-8L 1TB |

Windows 10 64-bit

| Item | Weighted Suite | Result | Remark |
|-------------|---------------------------------|---------------|---------------|
| 1 | PCMark Scores | PASS | 4061 |
| 2 | Essentials | PASS | 9795 |
| 3 | Productivity | PASS | 7158 |
| 4 | Digital Content Creation | PASS | 2592 |

| |
|--|
| Test Environment |
| Intel(R) Core(TM) i9-12900 5.10GHz innodisk DDR5 4800 32GB (SEC 149 K4RAH0B 6VB BCQK) ADATA DDR5 4800 16GB (SpecTek PT008-48B F 2144) acpi M2PDD-8L 1TB |

Windows 10 64-bit

| Item | Weighted Suite | Result | Remark |
|-------------|---------------------------------|---------------|---------------|
| 1 | PCMark Scores | PASS | 4069 |
| 2 | Essentials | PASS | 9775 |
| 3 | Productivity | PASS | 7174 |
| 4 | Digital Content Creation | PASS | 2608 |

5.4 CINEBENCH R23

Windows 10 64-bit

| Item | Weighted Suite | Test Environment | Result | Remark |
|------|----------------------|--|--------|----------|
| 1 | CPU (Multi Core) | Intel(R) Celeron(R) 6900E 3.00GHz crucial DDR5 4800 32GB*2 (Micro 2BA45 DB8NJ) acpi M2PDD-8L 1TB | PASS | 2197 pts |
| 2 | CPU (Single Core) | | PASS | 1095 pts |
| 3 | MP Ratio | | PASS | 2.01 x |

Windows 10 64-bit

| Item | Weighted Suite | Test Environment | Result | Remark |
|------|----------------------|--|--------|----------|
| 1 | CPU (Multi Core) | Intel(R) Celeron(R) 6900E 3.00GHz crucial DDR5 4800 32GB (Micro 2BA45 DB8NJ) ADATA DDR5 4800 16GB (SpecTek PT008-48B F 2144) acpi M2PDD-8L 1TB | PASS | 2097 pts |
| 2 | CPU (Single Core) | | PASS | 1071 pts |
| 3 | MP Ratio | | PASS | 1.96 x |

Windows 10 64-bit

| Item | Weighted Suite | Test Environment | Result | Remark |
|------|----------------------|--|--------|----------|
| 1 | CPU (Multi Core) | Intel(R) Celeron(R) 6900E 3.00GHz crucial DDR5 4800 32GB (Micro 2BA45 DB8NJ) acpi M2PDD-8L 1TB | PASS | 2214 pts |
| 2 | CPU (Single Core) | | PASS | 1141 pts |
| 3 | MP Ratio | | PASS | 1.94 x |

Windows 10 64-bit

| Item | Weighted Suite | Test Environment | Result | Remark |
|------|----------------------|---|--------|----------|
| 1 | CPU (Multi Core) | Intel(R) Celeron(R) 6900E 3.00GHz ADATA DDR5 4800 16GB*2 (SpecTek PT008-48B F 2144) acpi M2PDD-8L 1TB | PASS | 2204 pts |
| 2 | CPU (Single Core) | | PASS | 1134 pts |
| 3 | MP Ratio | | PASS | 1.94 x |

Windows 10 64-bit

| Item | Weighted Suite | Test Environment | Result | Remark |
|------|----------------------|---|--------|----------|
| 1 | CPU (Multi Core) | Intel(R) Celeron(R) 6900E 3.00GHz ADATA DDR5 4800 16GB (SpecTek PT008-48B F 2144) acpi M2PDD-8L 1TB | PASS | 2137 pts |
| 2 | CPU (Single Core) | | PASS | 1131 pts |
| 3 | MP Ratio | | PASS | 1.89 x |

Windows 10 64-bit

| Item | Weighted Suite | Test Environment | Result | Remark |
|------|----------------------|---|--------|----------|
| 1 | CPU (Multi Core) | Intel(R) Celeron(R) 6900E 3.00GHz DSL DDR5 4800 32GB*2 (SEC 240 K4RAH0B 6VB BCQK) acpi M2PDD-8L 1TB | PASS | 2212 pts |
| 2 | CPU (Single Core) | | PASS | 1140 pts |
| 3 | MP Ratio | | PASS | 1.94 x |

Windows 10 64-bit

| Item | Weighted Suite | Test Environment | Result | Remark |
|------|----------------------|---|--------|----------|
| 1 | CPU (Multi Core) | Intel(R) Celeron(R) 6900E 3.00GHz DSL DDR5 4800 32GB (SEC 240 K4RAH0B 6VB BCQK) acpi M2PDD-8L 1TB | PASS | 2208 pts |
| 2 | CPU (Single Core) | | PASS | 1140 pts |
| 3 | MP Ratio | | PASS | 1.94 x |

Windows 10 64-bit

| Item | Weighted Suite | Test Environment | Result | Remark |
|------|----------------------|--|--------|----------|
| 1 | CPU (Multi Core) | innodisk DDR5 4800 32GB*2 (SEC 149 K4RAH0B 6VB BCQK) acpi M2PDD-8L 1TB | PASS | 2141 pts |
| 2 | CPU (Single Core) | | PASS | 1137 pts |
| 3 | MP Ratio | | PASS | 1.88 x |

Windows 10 64-bit

| Item | Weighted Suite | Test Environment | Result | Remark |
|------|----------------------|--|--------|----------|
| 1 | CPU (Multi Core) | Intel(R) Celeron(R) 6900E 3.00GHz innodisk DDR5 4800 32GB (SEC 149 K4RAH0B 6VB BCQK) acpi M2PDD-8L 1TB | PASS | 2197 pts |
| 2 | CPU (Single Core) | | PASS | 1140 pts |
| 3 | MP Ratio | | PASS | 1.93 x |

Windows 10 64-bit

| Item | Weighted Suite | Test Environment | Result | Remark |
|------|----------------------|--|--------|----------|
| 1 | CPU (Multi Core) | Intel(R) Celeron(R) 6900E 3.00GHz DSL DDR5 4800 32GB (SEC 240 K4RAH0B 6VB BCQK) innodisk DDR5 4800 32GB (SEC 149 K4RAH0B 6VB BCQK) acpi M2PDD-8L 1TB | PASS | 2210 pts |
| 2 | CPU (Single Core) | | PASS | 1138 pts |
| 3 | MP Ratio | | PASS | 1.94 x |

Windows 10 64-bit

| Item | Weighted Suite | Test Environment | Result | Remark |
|------|----------------------|--|--------|----------|
| 1 | CPU (Multi Core) | Intel(R) Celeron(R) 6900E 3.00GHz DSL DDR5 4800 32GB (SEC 240 K4RAH0B 6VB BCQK) crucial DDR5 4800 32GB (Micro 2BA45 DB8NJ) acpi M2PDD-8L 1TB | PASS | 2205 pts |
| 2 | CPU (Single Core) | | PASS | 1141 pts |
| 3 | MP Ratio | | PASS | 1.93 x |

Windows 10 64-bit

| Item | Weighted Suite | Test Environment | Result | Remark |
|------|----------------------|--|--------|----------|
| 1 | CPU (Multi Core) | Intel(R) Celeron(R) 6900E 3.00GHz DSL DDR5 4800 32GB | PASS | 1318 pts |
| 2 | CPU (Single Core) | (SEC 240 K4RAH0B 6VB BCQK) ADATA DDR5 4800 16GB (SpecTek PT008-48B F 2144) | PASS | 1118 pts |
| 3 | MP Ratio | acpi M2PDD-8L 1TB | PASS | 1.18 x |

Windows 10 64-bit

| Item | Weighted Suite | Test Environment | Result | Remark |
|------|----------------------|---|--------|----------|
| 1 | CPU (Multi Core) | Intel(R) Celeron(R) 6900E 3.00GHz innodisk DDR5 4800 32GB*2 | PASS | 2208 pts |
| 2 | CPU (Single Core) | (SEC 149 K4RAH0B 6VB BCQK) crucial DDR5 4800 32GB (Micro 2BA45 DB8NJ) | PASS | 1144 pts |
| 3 | MP Ratio | acpi M2PDD-8L 1TB | PASS | 1.93 x |

Windows 10 64-bit

| Item | Weighted Suite | Test Environment | Result | Remark |
|------|----------------------|--|--------|----------|
| 1 | CPU (Multi Core) | Intel(R) Celeron(R) 6900E 3.00GHz innodisk DDR5 4800 32GB | PASS | 2206 pts |
| 2 | CPU (Single Core) | (SEC 149 K4RAH0B 6VB BCQK) ADATA DDR5 4800 16GB (SpecTek PT008-48B F 2144) | PASS | 1144 pts |
| 3 | MP Ratio | acpi M2PDD-8L 1TB | PASS | 1.93 x |

Windows 10 64-bit

| Item | Weighted Suite | Test Environment | Result | Remark |
|------|----------------------|---|--------|----------|
| 1 | CPU (Multi Core) | Intel(R) Core(TM) i5-12500 4.60GHz crucial DDR5 4800 32GB*2 (Micro 2BA45 DB8NJ) acpi M2PDD-8L 1TB | PASS | 10941pts |
| 2 | CPU (Single Core) | | PASS | 1613 pts |
| 3 | MP Ratio | | PASS | 6.78 x |

Windows 10 64-bit

| Item | Weighted Suite | Test Environment | Result | Remark |
|------|----------------------|---|--------|----------|
| 1 | CPU (Multi Core) | Intel(R) Core(TM) i5-12500 4.60GHz crucial DDR5 4800 32GB (Micro 2BA45 DB8NJ) ADATA DDR5 4800 16GB (SpecTek PT008-48B F 2144) acpi M2PDD-8L 1TB | PASS | 10955pts |
| 2 | CPU (Single Core) | | PASS | 1610 pts |
| 3 | MP Ratio | | PASS | 6.80 x |

Windows 10 64-bit

| Item | Weighted Suite | Test Environment | Result | Remark |
|------|----------------------|---|--------|----------|
| 1 | CPU (Multi Core) | Intel(R) Core(TM) i5-12500 4.60GHz crucial DDR5 4800 32GB (Micro 2BA45 DB8NJ) acpi M2PDD-8L 1TB | PASS | 10947pts |
| 2 | CPU (Single Core) | | PASS | 1611 pts |
| 3 | MP Ratio | | PASS | 6.80 x |

Windows 10 64-bit

| Item | Weighted Suite | Test Environment | Result | Remark |
|------|----------------------|--|--------|----------|
| 1 | CPU (Multi Core) | Intel(R) Core(TM) i5-12500 4.60GHz ADATA DDR5 4800 16GB*2 (SpecTek PT008-48B F 2144) acpi M2PDD-8L 1TB | PASS | 10947pts |
| 2 | CPU (Single Core) | | PASS | 1611 pts |
| 3 | MP Ratio | | PASS | 6.80 x |

Windows 10 64-bit

| Item | Weighted Suite | Test Environment | Result | Remark |
|------|----------------------|--|--------|----------|
| 1 | CPU (Multi Core) | Intel(R) Core(TM) i5-12500 4.60GHz ADATA DDR5 4800 16GB (SpecTek PT008-48B F 2144) acpi M2PDD-8L 1TB | PASS | 10937pts |
| 2 | CPU (Single Core) | | PASS | 1610 pts |
| 3 | MP Ratio | | PASS | 6.79 x |

Windows 10 64-bit

| Item | Weighted Suite | Test Environment | Result | Remark |
|------|----------------------|--|--------|-----------|
| 1 | CPU (Multi Core) | Intel(R) Core(TM) i5-12500 4.60GHz DSL DDR5 4800 32GB*2 (SEC 240 K4RAH0B 6VB BCQK) acpi M2PDD-8L 1TB | PASS | 10914 pts |
| 2 | CPU (Single Core) | | PASS | 1612 pts |
| 3 | MP Ratio | | PASS | 6.77 x |

Windows 10 64-bit

| Item | Weighted Suite | Test Environment | Result | Remark |
|------|----------------------|--|--------|-----------|
| 1 | CPU (Multi Core) | Intel(R) Core(TM) i5-12500 4.60GHz DSL DDR5 4800 32GB (SEC 240 K4RAH0B 6VB BCQK) acpi M2PDD-8L 1TB | PASS | 10907 pts |
| 2 | CPU (Single Core) | | PASS | 1599 pts |
| 3 | MP Ratio | | PASS | 6.82 x |

Windows 10 64-bit

| Item | Weighted Suite | Test Environment | Result | Remark |
|------|----------------------|--|--------|-----------|
| 1 | CPU (Multi Core) | Intel(R) Core(TM) i5-12500 4.60GHz innodisk DDR5 4800 32GB*2 (SEC 149 K4RAH0B 6VB CQK) acpi M2PDD-8L 1TB | PASS | 10902 pts |
| 2 | CPU (Single Core) | | PASS | 1610 pts |
| 3 | MP Ratio | | PASS | 6.77 x |

Windows 10 64-bit

| Item | Weighted Suite | Test Environment | Result | Remark |
|------|----------------------|--|--------|-----------|
| 1 | CPU (Multi Core) | Intel(R) Core(TM) i5-12500 4.60GHz innodisk DDR5 4800 32GB (SEC 149 K4RAH0B 6VB CQK) acpi M2PDD-8L 1TB | PASS | 10656 pts |
| 2 | CPU (Single Core) | | PASS | 1610 pts |
| 3 | MP Ratio | | PASS | 6.62 x |

Windows 10 64-bit

| Item | Weighted Suite | Test Environment | Result | Remark |
|------|----------------------|---|--------|-----------|
| 1 | CPU (Multi Core) | Intel(R) Core(TM) i5-12500 4.60GHz | PASS | 10788 pts |
| 2 | CPU (Single Core) | DSL DDR5 4800 32GB (SEC 240 K4RAH0B 6VB BCQK) | PASS | 1598 pts |
| 3 | MP Ratio | innodisk DDR5 4800 32GB (SEC 149 K4RAH0B 6VB CQK) acpi M2PDD-8L 1TB | PASS | 6.75 x |

Windows 10 64-bit

| Item | Weighted Suite | Test Environment | Result | Remark |
|------|----------------------|--|--------|-----------|
| 1 | CPU (Multi Core) | Intel(R) Core(TM) i5-12500 4.60GHz | PASS | 10908 pts |
| 2 | CPU (Single Core) | DSL DDR5 4800 32GB (SEC 240 K4RAH0B 6VB BCQK) | PASS | 1606 pts |
| 3 | MP Ratio | crucial DDR5 4800 32GB (Micro 2BA45 DB8NJ) acpi M2PDD-8L 1TB | PASS | 6.79 x |

Windows 10 64-bit

| Item | Weighted Suite | Test Environment | Result | Remark |
|------|----------------------|---|--------|-----------|
| 1 | CPU (Multi Core) | Intel(R) Core(TM) i5-12500 4.60GHz | PASS | 10932 pts |
| 2 | CPU (Single Core) | DSL DDR5 4800 32GB (SEC 240 K4RAH0B 6VB BCQK) | PASS | 1609 pts |
| 3 | MP Ratio | ADATA DDR5 4800 16GB (SpecTek PT008-48B F 2144) acpi M2PDD-8L 1TB | PASS | 6.79 x |

Windows 10 64-bit

| Item | Weighted Suite | Test Environment | Result | Remark |
|------|----------------------|---|--------|-----------|
| 1 | CPU (Multi Core) | Intel(R) Core(TM) i5-12500 4.60GHz innodisk DDR5 4800 32GB (SEC 149 K4RAH0B 6VB CQK) crucial DDR5 4800 32GB (Micro 2BA45 DB8NJ) acpi M2PDD-8L 1TB | PASS | 10913 pts |
| 2 | CPU (Single Core) | | PASS | 1607 pts |
| 3 | MP Ratio | | PASS | 6.79 x |

Windows 10 64-bit

| Item | Weighted Suite | Test Environment | Result | Remark |
|------|----------------------|--|--------|-----------|
| 1 | CPU (Multi Core) | Intel(R) Core(TM) i5-12500 4.60GHz innodisk DDR5 4800 32GB (SEC 149 K4RAH0B 6VB CQK) ADATA DDR5 4800 16GB (SpecTek PT008-48B F 2144) acpi M2PDD-8L 1TB | PASS | 10640 pts |
| 2 | CPU (Single Core) | | PASS | 1592 pts |
| 3 | MP Ratio | | PASS | 6.68 x |

Windows 10 64-bit

| Item | Weighted Suite | Test Environment | Result | Remark |
|------|----------------------|--|--------|----------|
| 1 | CPU (Multi Core) | Intel(R) Core(TM) i7-12700E 4.80GHz crucial DDR5 4800 32GB*2 (Micro 2BA45 DB8NJ) acpi M2PDD-8L 1TB | PASS | 8422 pts |
| 2 | CPU (Single Core) | | PASS | 1755 pts |
| 3 | MP Ratio | | PASS | 4.80 x |

Windows 10 64-bit

| Item | Weighted Suite | Test Environment | Result | Remark |
|------|----------------------|--|--------|----------|
| 1 | CPU (Multi Core) | Intel(R) Core(TM) i7-12700E 4.80GHz crucial DDR5 4800 32GB (Micro 2BA45 DB8NJ) ADATA DDR5 4800 16GB (SpecTek PT008-48B F 2144) acpi M2PDD-8L 1TB | PASS | 8526 pts |
| 2 | CPU (Single Core) | | PASS | 1756 pts |
| 3 | MP Ratio | | PASS | 4.85 x |

Windows 10 64-bit

| Item | Weighted Suite | Test Environment | Result | Remark |
|------|----------------------|--|--------|----------|
| 1 | CPU (Multi Core) | Intel(R) Core(TM) i7-12700E 4.80GHz crucial DDR5 4800 32GB (Micro 2BA45 DB8NJ) acpi M2PDD-8L 1TB | PASS | 8547 pts |
| 2 | CPU (Single Core) | | PASS | 1752 pts |
| 3 | MP Ratio | | PASS | 4.88 x |

Windows 10 64-bit

| Item | Weighted Suite | Test Environment | Result | Remark |
|------|----------------------|---|--------|----------|
| 1 | CPU (Multi Core) | Intel(R) Core(TM) i7-12700E 4.80GHz ADATA DDR5 4800 16GB*2 (SpecTek PT008-48B F 2144) acpi M2PDD-8L 1TB | PASS | 8513 pts |
| 2 | CPU (Single Core) | | PASS | 1750 pts |
| 3 | MP Ratio | | PASS | 4.87 x |

Windows 10 64-bit

| Item | Weighted Suite | Test Environment | Result | Remark |
|------|----------------------|---|--------|----------|
| 1 | CPU (Multi Core) | Intel(R) Core(TM) i7-12700E 4.80GHz ADATA DDR5 4800 16GB (SpecTek PT008-48B F 2144) acpi M2PDD-8L 1TB | PASS | 8594 pts |
| 2 | CPU (Single Core) | | PASS | 1751 pts |
| 3 | MP Ratio | | PASS | 4.91 x |

Windows 10 64-bit

| Item | Weighted Suite | Test Environment | Result | Remark |
|------|----------------------|---|--------|----------|
| 1 | CPU (Multi Core) | Intel(R) Core(TM) i7-12700E 4.80GHz DSL DDR5 4800 32GB*2 (SEC 240 K4RAH0B 6VB BCQK) acpi M2PDD-8L 1TB | PASS | 8379 pts |
| 2 | CPU (Single Core) | | PASS | 1752 pts |
| 3 | MP Ratio | | PASS | 4.78 x |

Windows 10 64-bit

| Item | Weighted Suite | Test Environment | Result | Remark |
|------|----------------------|---|--------|----------|
| 1 | CPU (Multi Core) | Intel(R) Core(TM) i7-12700E 4.80GHz DSL DDR5 4800 32GB (SEC 240 K4RAH0B 6VB BCQK) acpi M2PDD-8L 1TB | PASS | 8400 pts |
| 2 | CPU (Single Core) | | PASS | 1755 pts |
| 3 | MP Ratio | | PASS | 4.78 x |

Windows 10 64-bit

| Item | Weighted Suite | Test Environment | Result | Remark |
|------|----------------------|---|--------|----------|
| 1 | CPU (Multi Core) | Intel(R) Core(TM) i7-12700E 4.80GHz innodisk DDR5 4800 32GB*2 (SEC 149 K4RAH0B 6VB CQK) acpi M2PDD-8L 1TB | PASS | 8420 pts |
| 2 | CPU (Single Core) | | PASS | 1753 pts |
| 3 | MP Ratio | | PASS | 4.80 x |

Windows 10 64-bit

| Item | Weighted Suite | Test Environment | Result | Remark |
|------|----------------------|---|--------|----------|
| 1 | CPU (Multi Core) | Intel(R) Core(TM) i7-12700E 4.80GHz innodisk DDR5 4800 32GB (SEC 149 K4RAH0B 6VB CQK) acpi M2PDD-8L 1TB | PASS | 8349 pts |
| 2 | CPU (Single Core) | | PASS | 1756 pts |
| 3 | MP Ratio | | PASS | 4.75 x |

Windows 10 64-bit

| Item | Weighted Suite | Test Environment | Result | Remark |
|------|----------------------|---|--------|----------|
| 1 | CPU (Multi Core) | Intel(R) Core(TM) i7-12700E 4.80GHz DSL DDR5 4800 32GB (SEC 240 K4RAH0B 6VB BCQK) innodisk DDR5 4800 32GB (SEC 149 K4RAH0B 6VB CQK) acpi M2PDD-8L 1TB | PASS | 8431 pts |
| 2 | CPU (Single Core) | | PASS | 1756 pts |
| 3 | MP Ratio | | PASS | 4.80 x |

Windows 10 64-bit

| Item | Weighted Suite | Test Environment | Result | Remark |
|------|----------------------|---|--------|----------|
| 1 | CPU (Multi Core) | Intel(R) Core(TM) i7-12700E 4.80GHz | PASS | 8400 pts |
| 2 | CPU (Single Core) | DSL DDR5 4800 32GB (SEC 240 K4RAH0B 6VB BCQK) crucial DDR5 4800 32GB (Micro 2BA45 DB8NJ) | PASS | 1756 pts |
| 3 | MP Ratio | acpi M2PDD-8L 1TB | PASS | 4.78 x |

Windows 10 64-bit

| Item | Weighted Suite | Test Environment | Result | Remark |
|------|----------------------|--|--------|----------|
| 1 | CPU (Multi Core) | Intel(R) Core(TM) i7-12700E 4.80GHz | PASS | 8100 pts |
| 2 | CPU (Single Core) | DSL DDR5 4800 32GB (SEC 240 K4RAH0B 6VB BCQK) ADATA DDR5 4800 16GB (SpecTek PT008-48B F 2144) | PASS | 1758 pts |
| 3 | MP Ratio | acpi M2PDD-8L 1TB | PASS | 4.61 x |

Windows 10 64-bit

| Item | Weighted Suite | Test Environment | Result | Remark |
|------|----------------------|---|--------|----------|
| 1 | CPU (Multi Core) | Intel(R) Core(TM) i7-12700E 4.80GHz | PASS | 8473 pts |
| 2 | CPU (Single Core) | innodisk DDR5 4800 32GB (SEC 149 K4RAH0B 6VB CQK) crucial DDR5 4800 32GB (Micro 2BA45 DB8NJ) | PASS | 1749 pts |
| 3 | MP Ratio | acpi M2PDD-8L 1TB | PASS | 4.85 x |

Windows 10 64-bit

| Item | Weighted Suite | Test Environment | Result | Remark |
|------|----------------------|---|--------|----------|
| 1 | CPU (Multi Core) | Intel(R) Core(TM) i7-12700E 4.80GHz innodisk DDR5 4800 32GB (SEC 149 K4RAH0B 6VB CQK) ADATA DDR5 4800 16GB (SpecTek PT008-48B F 2144) acpi M2PDD-8L 1TB | PASS | 8502 pts |
| 2 | CPU (Single Core) | | PASS | 1755 pts |
| 3 | MP Ratio | | PASS | 4.84 x |

Windows 10 64-bit

| Item | Weighted Suite | Test Environment | Result | Remark |
|------|----------------------|---|--------|----------|
| 1 | CPU (Multi Core) | Intel(R) Core(TM) i9-12900TE 4.80GHz crucial DDR5 4800 32GB*2 (Micro 2BA45 DB8NJ) acpi M2PDD-8L 1TB | PASS | 8097 pts |
| 2 | CPU (Single Core) | | PASS | 1371 pts |
| 3 | MP Ratio | | PASS | 5.91 x |

Windows 10 64-bit

| Item | Weighted Suite | Test Environment | Result | Remark |
|------|----------------------|---|--------|----------|
| 1 | CPU (Multi Core) | Intel(R) Core(TM) i9-12900TE 4.80GHz crucial DDR5 4800 32GB (Micro 2BA45 DB8NJ) ADATA DDR5 4800 16GB (SpecTek PT008-48B F 2144) acpi M2PDD-8L 1TB | PASS | 8096 pts |
| 2 | CPU (Single Core) | | PASS | 1370 pts |
| 3 | MP Ratio | | PASS | 5.91 x |

Windows 10 64-bit

| Item | Weighted Suite | Test Environment | Result | Remark |
|------|----------------------|---|--------|----------|
| 1 | CPU (Multi Core) | Intel(R) Core(TM) i9-12900TE 4.80GHz crucial DDR5 4800 32GB (Micro 2BA45 DB8NJ) acpi M2PDD-8L 1TB | PASS | 8086 pts |
| 2 | CPU (Single Core) | | PASS | 1370 pts |
| 3 | MP Ratio | | PASS | 5.90 x |

Windows 10 64-bit

| Item | Weighted Suite | Test Environment | Result | Remark |
|------|----------------------|--|--------|----------|
| 1 | CPU (Multi Core) | Intel(R) Core(TM) i9-12900TE 4.80GHz ADATA DDR5 4800 16GB*2 (SpecTek PT008-48B F 2144) acpi M2PDD-8L 1TB | PASS | 8041 pts |
| 2 | CPU (Single Core) | | PASS | 1368 pts |
| 3 | MP Ratio | | PASS | 5.88 x |

Windows 10 64-bit

| Item | Weighted Suite | Test Environment | Result | Remark |
|------|----------------------|--|--------|----------|
| 1 | CPU (Multi Core) | Intel(R) Core(TM) i9-12900TE 4.80GHz ADATA DDR5 4800 16GB (SpecTek PT008-48B F 2144) acpi M2PDD-8L 1TB | PASS | 8098 pts |
| 2 | CPU (Single Core) | | PASS | 1373 pts |
| 3 | MP Ratio | | PASS | 5.90 x |

Windows 10 64-bit

| Item | Weighted Suite | Test Environment | Result | Remark |
|------|----------------------|--|--------|----------|
| 1 | CPU (Multi Core) | Intel(R) Core(TM) i9-12900TE 4.80GHz DSL DDR5 4800 32GB*2 (SEC 240 K4RAH0B 6VB BCQK) acpi M2PDD-8L 1TB | PASS | 7067 pts |
| 2 | CPU (Single Core) | | PASS | 1366 pts |
| 3 | MP Ratio | | PASS | 5.57 x |

Windows 10 64-bit

| Item | Weighted Suite | Test Environment | Result | Remark |
|------|----------------------|--|--------|----------|
| 1 | CPU (Multi Core) | Intel(R) Core(TM) i9-12900TE 4.80GHz DSL DDR5 4800 32GB (SEC 240 K4RAH0B 6VB BCQK) acpi M2PDD-8L 1TB | PASS | 8050 pts |
| 2 | CPU (Single Core) | | PASS | 1372 pts |
| 3 | MP Ratio | | PASS | 5.87 x |

Windows 10 64-bit

| Item | Weighted Suite | Test Environment | Result | Remark |
|------|----------------------|--|--------|----------|
| 1 | CPU (Multi Core) | Intel(R) Core(TM) i9-12900TE 4.80GHz innodisk DDR5 4800 32GB*2 (SEC 149 K4RAH0B 6VB CQK) acpi M2PDD-8L 1TB | PASS | 8056 pts |
| 2 | CPU (Single Core) | | PASS | 1372 pts |
| 3 | MP Ratio | | PASS | 5.87 x |

Windows 10 64-bit

| Item | Weighted Suite | Test Environment | Result | Remark |
|------|----------------------|--|--------|----------|
| 1 | CPU (Multi Core) | Intel(R) Core(TM) i9-12900TE 4.80GHz innodisk DDR5 4800 32GB (SEC 149 K4RAH0B 6VB CQK) acpi M2PDD-8L 1TB | PASS | 8073 pts |
| 2 | CPU (Single Core) | | PASS | 1370 pts |
| 3 | MP Ratio | | PASS | 5.89 x |

Windows 10 64-bit

| Item | Weighted Suite | Test Environment | Result | Remark |
|------|----------------------|--|--------|----------|
| 1 | CPU (Multi Core) | Intel(R) Core(TM) i9-12900TE 4.80GHz DSL DDR5 4800 32GB (SEC 240 K4RAH0B 6VB BCQK) innodisk DDR5 4800 32GB (SEC 149 K4RAH0B 6VB CQK) acpi M2PDD-8L 1TB | PASS | 8043 pts |
| 2 | CPU (Single Core) | | PASS | 1372 pts |
| 3 | MP Ratio | | PASS | 5.86 x |

Windows 10 64-bit

| Item | Weighted Suite | Test Environment | Result | Remark |
|------|----------------------|---|--------|----------|
| 1 | CPU (Multi Core) | Intel(R) Core(TM) i9-12900TE 4.80GHz DSL DDR5 4800 32GB (SEC 240 K4RAH0B 6VB BCQK) crucial DDR5 4800 32GB (Micro 2BA45 DB8NJ) acpi M2PDD-8L 1TB | PASS | 8036 pts |
| 2 | CPU (Single Core) | | PASS | 1371 pts |
| 3 | MP Ratio | | PASS | 5.86 x |

Windows 10 64-bit

| Item | Weighted Suite | Test Environment | Result | Remark |
|------|----------------------|---|--------|----------|
| 1 | CPU (Multi Core) | Intel(R) Core(TM) i9-12900TE 4.80GHz | PASS | 7953 pts |
| 2 | CPU (Single Core) | DSL DDR5 4800 32GB (SEC 240 K4RAH0B 6VB BCQK) ADATA DDR5 4800 16GB (SpecTek PT008-48B F 144) | PASS | 1369 pts |
| 3 | MP Ratio | acpi M2PDD-8L 1TB | PASS | 5.81 x |

Windows 10 64-bit

| Item | Weighted Suite | Test Environment | Result | Remark |
|------|----------------------|---|--------|----------|
| 1 | CPU (Multi Core) | Intel(R) Core(TM) i9-12900TE 4.80GHz | PASS | 8000 pts |
| 2 | CPU (Single Core) | innodisk DDR5 4800 32GB (SEC 149 K4RAH0B 6VB CQK) crucial DDR5 4800 32GB (Micro 2BA45 DB8NJ) | PASS | 1370 pts |
| 3 | MP Ratio | acpi M2PDD-8L 1TB | PASS | 5.84 x |

Windows 10 64-bit

| Item | Weighted Suite | Test Environment | Result | Remark |
|------|----------------------|--|--------|----------|
| 1 | CPU (Multi Core) | Intel(R) Core(TM) i9-12900TE 4.80GHz | PASS | 8010 pts |
| 2 | CPU (Single Core) | innodisk DDR5 4800 32GB (SEC 149 K4RAH0B 6VB CQK) ADATA DDR5 4800 16GB (SpecTek PT008-48B F 2144) | PASS | 1370 pts |
| 3 | MP Ratio | acpi M2PDD-8L 1TB | PASS | 5.85 x |

Windows 10 64-bit

| Item | Weighted Suite | Test Environment | Result | Remark |
|------|----------------------|---|--------|-----------|
| 1 | CPU (Multi Core) | Intel(R) Core(TM) i9-12900 5.10GHz crucial DDR5 4800 32GB*2 (Micro 2BA45 DB8NJ) acpi M2PDD-8L 1TB | PASS | 10993 pts |
| 2 | CPU (Single Core) | | PASS | 1847 pts |
| 3 | MP Ratio | | PASS | 5.95 x |

Windows 10 64-bit

| Item | Weighted Suite | Test Environment | Result | Remark |
|------|----------------------|---|--------|-----------|
| 1 | CPU (Multi Core) | Intel(R) Core(TM) i9-12900 5.10GHz crucial DDR5 4800 32GB (Micro 2BA45 DB8NJ) ADATA DDR5 4800 16GB (SpecTek PT008-48B F 2144) acpi M2PDD-8L 1TB | PASS | 10993 pts |
| 2 | CPU (Single Core) | | PASS | 1847 pts |
| 3 | MP Ratio | | PASS | 5.95 x |

Windows 10 64-bit

| Item | Weighted Suite | Test Environment | Result | Remark |
|------|----------------------|---|--------|-----------|
| 1 | CPU (Multi Core) | Intel(R) Core(TM) i9-12900 5.10GHz crucial DDR5 4800 32GB (Micro 2BA45 DB8NJ) acpi M2PDD-8L 1TB | PASS | 10629 pts |
| 2 | CPU (Single Core) | | PASS | 1842 pts |
| 3 | MP Ratio | | PASS | 5.77 x |

Windows 10 64-bit

| Item | Weighted Suite | Test Environment | Result | Remark |
|------|----------------------|--|--------|-----------|
| 1 | CPU (Multi Core) | Intel(R) Core(TM) i9-12900 5.10GHz ADATA DDR5 4800 16GB*2 (SpecTek PT008-48B F 2144) acpi M2PDD-8L 1TB | PASS | 10981 pts |
| 2 | CPU (Single Core) | | PASS | 1839 pts |
| 3 | MP Ratio | | PASS | 5.97 x |

Windows 10 64-bit

| Item | Weighted Suite | Test Environment | Result | Remark |
|------|----------------------|--|--------|----------|
| 1 | CPU (Multi Core) | Intel(R) Core(TM) i9-12900 5.10GHz ADATA DDR5 4800 16GB (SpecTek PT008-48B F 2144) acpi M2PDD-8L 1TB | PASS | 10981pts |
| 2 | CPU (Single Core) | | PASS | 1839 pts |
| 3 | MP Ratio | | PASS | 5.97 x |

Windows 10 64-bit

| Item | Weighted Suite | Test Environment | Result | Remark |
|------|----------------------|--|--------|-----------|
| 1 | CPU (Multi Core) | Intel(R) Core(TM) i9-12900 5.10GHz DSL DDR5 4800 32GB*2 (SEC 240 K4RAH0B 6VB BCQK) acpi M2PDD-8L 1TB | PASS | 10481 pts |
| 2 | CPU (Single Core) | | PASS | 1835 pts |
| 3 | MP Ratio | | PASS | 5.71 x |

Windows 10 64-bit

| Item | Weighted Suite | Test Environment | Result | Remark |
|------|----------------------|--|--------|-----------|
| 1 | CPU (Multi Core) | Intel(R) Core(TM) i9-12900 5.10GHz DSL DDR5 4800 32GB (SEC 240 K4RAH0B 6VB BCQK) acpi M2PDD-8L 1TB | PASS | 10516 pts |
| 2 | CPU (Single Core) | | PASS | 1840 pts |
| 3 | MP Ratio | | PASS | 5.72 x |

Windows 10 64-bit

| Item | Weighted Suite | Test Environment | Result | Remark |
|------|----------------------|--|--------|-----------|
| 1 | CPU (Multi Core) | Intel(R) Core(TM) i9-12900 5.10GHz innodisk DDR5 4800 32GB*2 (SEC 149 K4RAH0B 6VB CQK) acpi M2PDD-8L 1TB | PASS | 10475 pts |
| 2 | CPU (Single Core) | | PASS | 1831 pts |
| 3 | MP Ratio | | PASS | 5.72 x |

Windows 10 64-bit

| Item | Weighted Suite | Test Environment | Result | Remark |
|------|----------------------|--|--------|-----------|
| 1 | CPU (Multi Core) | Intel(R) Core(TM) i9-12900 5.10GHz innodisk DDR5 4800 32GB (SEC 149 K4RAH0B 6VB CQK) acpi M2PDD-8L 1TB | PASS | 10512 pts |
| 2 | CPU (Single Core) | | PASS | 1840 pts |
| 3 | MP Ratio | | PASS | 5.71 x |

Windows 10 64-bit

| Item | Weighted Suite | Test Environment | Result | Remark |
|------|----------------------|--|--------|-----------|
| 1 | CPU (Multi Core) | Intel(R) Core(TM) i9-12900 5.10GHz | PASS | 10475 pts |
| 2 | CPU (Single Core) | DSL DDR5 4800 32GB (SEC 240 K4RAH0B 6VB BCQK) innodisk DDR5 4800 32GB (SEC 149 K4RAH0B 6VB CQK) | PASS | 1842 pts |
| 3 | MP Ratio | acpi M2PDD-8L 1TB | PASS | 5.69 x |

Windows 10 64-bit

| Item | Weighted Suite | Test Environment | Result | Remark |
|------|----------------------|---|--------|-----------|
| 1 | CPU (Multi Core) | Intel(R) Core(TM) i9-12900 5.10GHz | PASS | 10481 pts |
| 2 | CPU (Single Core) | DSL DDR5 4800 32GB (SEC 240 K4RAH0B 6VB BCQK) crucial DDR5 4800 32GB (Micro 2BA45 DB8NJ) | PASS | 1841 pts |
| 3 | MP Ratio | acpi M2PDD-8L 1TB | PASS | 5.69 x |

Windows 10 64-bit

| Item | Weighted Suite | Test Environment | Result | Remark |
|------|----------------------|--|--------|-----------|
| 1 | CPU (Multi Core) | Intel(R) Core(TM) i9-12900 5.10GHz | PASS | 10492 pts |
| 2 | CPU (Single Core) | DSL DDR5 4800 32GB (SEC 240 K4RAH0B 6VB BCQK) ADATA DDR5 4800 16GB (SpecTek PT008-48B F 2144) | PASS | 1841 pts |
| 3 | MP Ratio | acpi M2PDD-8L 1TB | PASS | 5.70 x |

indows 10 64-bit

| Item | Weighted Suite | Test Environment | Result | Remark |
|------|----------------------|---|--------|-----------|
| 1 | CPU (Multi Core) | Intel(R) Core(TM) i9-12900 5.10GHz innodisk DDR5 4800 32GB (SEC 149 K4RAH0B 6VB CQK) crucial DDR5 4800 32GB (Micro 2BA45 DB8NJ) acpi M2PDD-8L 1TB | PASS | 10748 pts |
| 2 | CPU (Single Core) | | PASS | 1840 pts |
| 3 | MP Ratio | | PASS | 5.84 x |

Windows 10 64-bit

| Item | Weighted Suite | Test Environment | Result | Remark |
|------|----------------------|--|--------|-----------|
| 1 | CPU (Multi Core) | Intel(R) Core(TM) i9-12900 5.10GHz innodisk DDR5 4800 32GB (SEC 149 K4RAH0B 6VB CQK) ADATA DDR5 4800 16GB (SpecTek PT008-48B F 2144) acpi M2PDD-8L 1TB | PASS | 10494 pts |
| 2 | CPU (Single Core) | | PASS | 1836 pts |
| 3 | MP Ratio | | PASS | 5.71 x |

5.5 Geekbench 6

Windows 10 64-bit

| Item | Weighted Suite | Test Environment | Result | Remark |
|------|----------------------|--|--------|--------|
| 1 | Single-Core Score | Intel(R) Celeron(R) 6900E 3.00GHz crucial DDR5 4800 32GB*2 (Micro 2BA45 DB8NJ) acpi M2PDD-8L 1TB | PASS | 1566 |
| 2 | Multi-Core Score | | PASS | 2819 |
| 3 | OpenCL Score | | PASS | 812 |

Windows 10 64-bit

| Item | Weighted Suite | Test Environment | Result | Remark |
|------|-------------------|--|--------|--------|
| 1 | Single-Core Score | Intel(R) Celeron(R) 6900E 3.00GHz crucial DDR5 4800 32GB (Micro 2BA45 DB8NJ) ADATA DDR5 4800 16GB (SpecTek PT008-48B F 2144) acpi M2PDD-8L 1TB | PASS | 1567 |
| 2 | Multi-Core Score | | PASS | 2815 |
| 3 | OpenCL Score | | PASS | 814 |

Windows 10 64-bit

| Item | Weighted Suite | Test Environment | Result | Remark |
|------|-------------------|--|--------|--------|
| 1 | Single-Core Score | Intel(R) Celeron(R) 6900E 3.00GHz crucial DDR5 4800 32GB (Micro 2BA45 DB8NJ) acpi M2PDD-8L 1TB | PASS | 1559 |
| 2 | Multi-Core Score | | PASS | 2788 |
| 3 | OpenCL Score | | PASS | 814 |

Windows 10 64-bit

| Item | Weighted Suite | Test Environment | Result | Remark |
|------|-------------------|---|--------|--------|
| 1 | Single-Core Score | Intel(R) Celeron(R) 6900E 3.00GHz ADATA DDR5 4800 16GB*2 (SpecTek PT008-48B F 2144) acpi M2PDD-8L 1TB | PASS | 1562 |
| 2 | Multi-Core Score | | PASS | 2834 |
| 3 | OpenCL Score | | PASS | 815 |

Windows 10 64-bit

| Item | Weighted Suite | Test Environment | Result | Remark |
|------|-------------------|---|--------|--------|
| 1 | Single-Core Score | Intel(R) Celeron(R) 6900E 3.00GHz ADATA DDR5 4800 16GB (SpecTek PT008-48B F 2144) acpi M2PDD-8L 1TB | PASS | 1558 |
| 2 | Multi-Core Score | | PASS | 2772 |
| 3 | OpenCL Score | | PASS | 815 |

Windows 10 64-bit

| Item | Weighted Suite | Test Environment | Result | Remark |
|------|-------------------|---|--------|--------|
| 1 | Single-Core Score | Intel(R) Celeron(R) 6900E 3.00GHz DSL DDR5 4800 32GB*2 (SEC 240 K4RAH0B 6VB BCQK) acpi M2PDD-8L 1TB | PASS | 1569 |
| 2 | Multi-Core Score | | PASS | 2840 |
| 3 | OpenCL Score | | PASS | 813 |

Windows 10 64-bit

| Item | Weighted Suite | Test Environment | Result | Remark |
|------|-------------------|---|--------|--------|
| 1 | Single-Core Score | Intel(R) Celeron(R) 6900E 3.00GHz DSL DDR5 4800 32GB (SEC 240 K4RAH0B 6VB BCQK) acpi M2PDD-8L 1TB | PASS | 1559 |
| 2 | Multi-Core Score | | PASS | 2789 |
| 3 | OpenCL Score | | PASS | 813 |

Windows 10 64-bit

| Item | Weighted Suite | Test Environment | Result | Remark |
|------|-------------------|---|--------|--------|
| 1 | Single-Core Score | Intel(R) Celeron(R) 6900E 3.00GHz innodisk DDR5 4800 32GB*2 (SEC 149 K4RAH0B 6VB CQK) acpi M2PDD-8L 1TB | PASS | 1572 |
| 2 | Multi-Core Score | | PASS | 2846 |
| 3 | OpenCL Score | | PASS | 813 |

Windows 10 64-bit

| Item | Weighted Suite | Test Environment | Result | Remark |
|------|-------------------|---|--------|--------|
| 1 | Single-Core Score | Intel(R) Celeron(R) 6900E 3.00GHz innodisk DDR5 4800 32GB (SEC 149 K4RAH0B 6VB CQK) acpi M2PDD-8L 1TB | PASS | 1560 |
| 2 | Multi-Core Score | | PASS | 2793 |
| 3 | OpenCL Score | | PASS | 814 |

Windows 10 64-bit

| Item | Weighted Suite | Test Environment | Result | Remark |
|------|-------------------|---|--------|--------|
| 1 | Single-Core Score | Intel(R) Celeron(R) 6900E 3.00GHz DSL DDR5 4800 32GB (SEC 240 K4RAH0B 6VB BCQK) innodisk DDR5 4800 32GB (SEC 149 K4RAH0B 6VB CQK) acpi M2PDD-8L 1TB | PASS | 1571 |
| 2 | Multi-Core Score | | PASS | 2802 |
| 3 | OpenCL Score | | PASS | 813 |

Windows 10 64-bit

| Item | Weighted Suite | Test Environment | Result | Remark |
|------|-------------------|---|--------|--------|
| 1 | Single-Core Score | Intel(R) Celeron(R) 6900E 3.00GHz | PASS | 1566 |
| 2 | Multi-Core Score | DSL DDR5 4800 32GB (SEC 240 K4RAH0B 6VB BCQK) crucial DDR5 4800 32GB (Micro 2BA45 DB8NJ) | PASS | 2836 |
| 3 | OpenCL Score | acpi M2PDD-8L 1TB | PASS | 813 |

Windows 10 64-bit

| Item | Weighted Suite | Test Environment | Result | Remark |
|------|-------------------|--|--------|--------|
| 1 | Single-Core Score | Intel(R) Celeron(R) 6900E 3.00GHz | PASS | 1567 |
| 2 | Multi-Core Score | DSL DDR5 4800 32GB (SEC 240 K4RAH0B 6VB BCQK) ADATA DDR5 4800 16GB (SpecTek PT008-48B F 2144) | PASS | 2834 |
| 3 | OpenCL Score | acpi M2PDD-8L 1TB | PASS | 813 |

Windows 10 64-bit

| Item | Weighted Suite | Test Environment | Result | Remark |
|------|-------------------|---|--------|--------|
| 1 | Single-Core Score | Intel(R) Celeron(R) 6900E 3.00GHz | PASS | 1564 |
| 2 | Multi-Core Score | innodisk DDR5 4800 32GB (SEC 149 K4RAH0B 6VB CQK) crucial DDR5 4800 32GB (Micro 2BA45 DB8NJ) | PASS | 2835 |
| 3 | OpenCL Score | acpi M2PDD-8L 1TB | PASS | 813 |

Windows 10 64-bit

| Item | Weighted Suite | Test Environment | Result | Remark |
|------|-------------------|--|--------|--------|
| 1 | Single-Core Score | Intel(R) Celeron(R) 6900E 3.00GHz | PASS | 1570 |
| 2 | Multi-Core Score | innodisk DDR5 4800 32GB (SEC 149 K4RAH0B 6VB CQK) ADATA DDR5 4800 16GB (SpecTek PT008-48B F 2144) | PASS | 2834 |
| 3 | OpenCL Score | acpi M2PDD-8L 1TB | PASS | 813 |

Windows 10 64-bit

| Item | Weighted Suite | Test Environment | Result | Remark |
|------|-------------------|---|--------|--------|
| 1 | Single-Core Score | Intel(R) Core(TM) i5-12500 4.60GHz | PASS | 2188 |
| 2 | Multi-Core Score | crucial DDR5 4800 32GB*2 (Micro 2BA45 DB8NJ) | PASS | 10725 |
| 3 | OpenCL Score | acpi M2PDD-8L 1TB | PASS | 1552 |

Windows 10 64-bit

| Item | Weighted Suite | Test Environment | Result | Remark |
|------|-------------------|---|--------|--------|
| 1 | Single-Core Score | Intel(R) Core(TM) i5-12500 4.60GHz | PASS | 2183 |
| 2 | Multi-Core Score | crucial DDR5 4800 32GB (Micro 2BA45 DB8NJ) ADATA DDR5 4800 16GB (SpecTek PT008-48B F 2144) | PASS | 10514 |
| 3 | OpenCL Score | acpi M2PDD-8L 1TB | PASS | 1578 |

Windows 10 64-bit

| Item | Weighted Suite | Test Environment | Result | Remark |
|------|-------------------|---|--------|--------|
| 1 | Single-Core Score | Intel(R) Core(TM) i5-12500 4.60GHz crucial DDR5 4800 32GB (Micro 2BA45 DB8NJ) acpi M2PDD-8L 1TB | PASS | 2173 |
| 2 | Multi-Core Score | | PASS | 9494 |
| 3 | OpenCL Score | | PASS | 1562 |

Windows 10 64-bit

| Item | Weighted Suite | Test Environment | Result | Remark |
|------|-------------------|--|--------|--------|
| 1 | Single-Core Score | Intel(R) Core(TM) i5-12500 4.60GHz ADATA DDR5 4800 16GB*2 (SpecTek PT008-48B F 2144) acpi M2PDD-8L 1TB | PASS | 2177 |
| 2 | Multi-Core Score | | PASS | 10450 |
| 3 | OpenCL Score | | PASS | 1574 |

Windows 10 64-bit

| Item | Weighted Suite | Test Environment | Result | Remark |
|------|-------------------|--|--------|--------|
| 1 | Single-Core Score | Intel(R) Core(TM) i5-12500 4.60GHz ADATA DDR5 4800 16GB (SpecTek PT008-48B F 2144) acpi M2PDD-8L 1TB | PASS | 2158 |
| 2 | Multi-Core Score | | PASS | 9116 |
| 3 | OpenCL Score | | PASS | 1560 |

Windows 10 64-bit

| Item | Weighted Suite | Test Environment | Result | Remark |
|------|-------------------|--|--------|--------|
| 1 | Single-Core Score | Intel(R) Core(TM) i5-12500 4.60GHz DSL DDR5 4800 32GB*2 (SEC 240 K4RAH0B 6VB BCQK) acpi M2PDD-8L 1TB | PASS | 2186 |
| 2 | Multi-Core Score | | PASS | 10699 |
| 3 | OpenCL Score | | PASS | 1577 |

Windows 10 64-bit

| Item | Weighted Suite | Test Environment | Result | Remark |
|------|-------------------|--|--------|--------|
| 1 | Single-Core Score | Intel(R) Core(TM) i5-12500 4.60GHz DSL DDR5 4800 32GB (SEC 240 K4RAH0B 6VB BCQK) acpi M2PDD-8L 1TB | PASS | 2170 |
| 2 | Multi-Core Score | | PASS | 9492 |
| 3 | OpenCL Score | | PASS | 1582 |

Windows 10 64-bit

| Item | Weighted Suite | Test Environment | Result | Remark |
|------|-------------------|--|--------|--------|
| 1 | Single-Core Score | Intel(R) Core(TM) i5-12500 4.60GHz innodisk DDR5 4800 32GB*2 (SEC 149 K4RAH0B 6VB CQK) acpi M2PDD-8L 1TB | PASS | 2185 |
| 2 | Multi-Core Score | | PASS | 10639 |
| 3 | OpenCL Score | | PASS | 1581 |

Windows 10 64-bit

| Item | Weighted Suite | Test Environment | Result | Remark |
|------|-------------------|--|--------|--------|
| 1 | Single-Core Score | Intel(R) Core(TM) i5-12500 4.60GHz innodisk DDR5 4800 32GB (SEC 149 K4RAH0B 6VB CQK) acpi M2PDD-8L 1TB | PASS | 2166 |
| 2 | Multi-Core Score | | PASS | 9475 |
| 3 | OpenCL Score | | PASS | 1585 |

Windows 10 64-bit

| Item | Weighted Suite | Test Environment | Result | Remark |
|------|-------------------|--|--------|--------|
| 1 | Single-Core Score | Intel(R) Core(TM) i5-12500 4.60GHz DSL DDR5 4800 32GB (SEC 240 K4RAH0B 6VB BCQK) innodisk DDR5 4800 32GB (SEC 149 K4RAH0B 6VB CQK) acpi M2PDD-8L 1TB | PASS | 2182 |
| 2 | Multi-Core Score | | PASS | 10555 |
| 3 | OpenCL Score | | PASS | 1568 |

Windows 10 64-bit

| Item | Weighted Suite | Test Environment | Result | Remark |
|------|-------------------|---|--------|--------|
| 1 | Single-Core Score | Intel(R) Core(TM) i5-12500 4.60GHz DSL DDR5 4800 32GB (SEC 240 K4RAH0B 6VB BCQK) crucial DDR5 4800 32GB (Micro 2BA45 DB8NJ) acpi M2PDD-8L 1TB | PASS | 2170 |
| 2 | Multi-Core Score | | PASS | 9463 |
| 3 | OpenCL Score | | PASS | 1580 |

Windows 10 64-bit

| Item | Weighted Suite | Test Environment | Result | Remark |
|------|-------------------|---|--------|--------|
| 1 | Single-Core Score | Intel(R) Core(TM) i5-12500 4.60GHz | PASS | 2182 |
| 2 | Multi-Core Score | DSL DDR5 4800 32GB (SEC 240 K4RAH0B 6VB BCQK) | PASS | 10581 |
| 3 | OpenCL Score | ADATA DDR5 4800 16GB (SpecTek PT008-48B F 2144) acpi M2PDD-8L 1TB | PASS | 1580 |

Windows 10 64-bit

| Item | Weighted Suite | Test Environment | Result | Remark |
|------|-------------------|---|--------|--------|
| 1 | Single-Core Score | Intel(R) Core(TM) i5-12500 4.60GHz | PASS | 2186 |
| 2 | Multi-Core Score | innodisk DDR5 4800 32GB (SEC 149 K4RAH0B 6VB CQK) crucial DDR5 4800 32GB (Micro 2BA45 DB8NJ) | PASS | 10690 |
| 3 | OpenCL Score | acpi M2PDD-8L 1TB | PASS | 1550 |

Windows 10 64-bit

| Item | Weighted Suite | Test Environment | Result | Remark |
|------|-------------------|--|--------|--------|
| 1 | Single-Core Score | Intel(R) Core(TM) i5-12500 4.60GHz | PASS | 2165 |
| 2 | Multi-Core Score | innodisk DDR5 4800 32GB (SEC 149 K4RAH0B 6VB CQK) ADATA DDR5 4800 16GB (SpecTek PT008-48B F 2144) | PASS | 9290 |
| 3 | OpenCL Score | acpi M2PDD-8L 1TB | PASS | 1583 |

Windows 10 64-bit

| Item | Weighted Suite | Test Environment | Result | Remark |
|------|-------------------|--|--------|--------|
| 1 | Single-Core Score | Intel(R) Core(TM) i7-12700E 4.80GHz crucial DDR5 4800 32GB*2 (Micro 2BA45 DB8NJ) acpi M2PDD-8L 1TB | PASS | 2376 |
| 2 | Multi-Core Score | | PASS | 13309 |
| 3 | OpenCL Score | | PASS | 1554 |

Windows 10 64-bit

| Item | Weighted Suite | Test Environment | Result | Remark |
|------|-------------------|--|--------|--------|
| 1 | Single-Core Score | Intel(R) Core(TM) i7-12700E 4.80GHz crucial DDR5 4800 32GB (Micro 2BA45 DB8NJ) ADATA DDR5 4800 16GB (SpecTek PT008-48B F 2144) acpi M2PDD-8L 1TB | PASS | 2368 |
| 2 | Multi-Core Score | | PASS | 12900 |
| 3 | OpenCL Score | | PASS | 1580 |

Windows 10 64-bit

| Item | Weighted Suite | Test Environment | Result | Remark |
|------|-------------------|--|--------|--------|
| 1 | Single-Core Score | Intel(R) Core(TM) i7-12700E 4.80GHz crucial DDR5 4800 32GB (Micro 2BA45 DB8NJ) acpi M2PDD-8L 1TB | PASS | 2358 |
| 2 | Multi-Core Score | | PASS | 11151 |
| 3 | OpenCL Score | | PASS | 1554 |

Windows 10 64-bit

| Item | Weighted Suite | Test Environment | Result | Remark |
|------|-------------------|---|--------|--------|
| 1 | Single-Core Score | Intel(R) Core(TM) i7-12700E 4.80GHz ADATA DDR5 4800 16GB*2 (SpecTek PT008-48B F 2144) acpi M2PDD-8L 1TB | PASS | 2362 |
| 2 | Multi-Core Score | | PASS | 12958 |
| 3 | OpenCL Score | | PASS | 1570 |

Windows 10 64-bit

| Item | Weighted Suite | Test Environment | Result | Remark |
|------|-------------------|---|--------|--------|
| 1 | Single-Core Score | Intel(R) Core(TM) i7-12700E 4.80GHz ADATA DDR5 4800 16GB (SpecTek PT008-48B F 2144) acpi M2PDD-8L 1TB | PASS | 2346 |
| 2 | Multi-Core Score | | PASS | 10482 |
| 3 | OpenCL Score | | PASS | 1571 |

Windows 10 64-bit

| Item | Weighted Suite | Test Environment | Result | Remark |
|------|-------------------|---|--------|--------|
| 1 | Single-Core Score | Intel(R) Core(TM) i7-12700E 4.80GHz DSL DDR5 4800 32GB*2 (SEC 240 K4RAH0B 6VB BCQK) acpi M2PDD-8L 1TB | PASS | 2376 |
| 2 | Multi-Core Score | | PASS | 13238 |
| 3 | OpenCL Score | | PASS | 1580 |

Windows 10 64-bit

| Item | Weighted Suite | Test Environment | Result | Remark |
|------|-------------------|---|--------|--------|
| 1 | Single-Core Score | Intel(R) Core(TM) i7-12700E 4.80GHz DSL DDR5 4800 32GB (SEC 240 K4RAH0B 6VB BCQK) acpi M2PDD-8L 1TB | PASS | 2358 |
| 2 | Multi-Core Score | | PASS | 11137 |
| 3 | OpenCL Score | | PASS | 1554 |

Windows 10 64-bit

| Item | Weighted Suite | Test Environment | Result | Remark |
|------|-------------------|---|--------|--------|
| 1 | Single-Core Score | Intel(R) Core(TM) i7-12700E 4.80GHz innodisk DDR5 4800 32GB*2 (SEC 149 K4RAH0B 6VB CQK) acpi M2PDD-8L 1TB | PASS | 2329 |
| 2 | Multi-Core Score | | PASS | 13211 |
| 3 | OpenCL Score | | PASS | 1578 |

Windows 10 64-bit

| Item | Weighted Suite | Test Environment | Result | Remark |
|------|-------------------|---|--------|--------|
| 1 | Single-Core Score | Intel(R) Core(TM) i7-12700E 4.80GHz innodisk DDR5 4800 32GB (SEC 149 K4RAH0B 6VB CQK) acpi M2PDD-8L 1TB | PASS | 2356 |
| 2 | Multi-Core Score | | PASS | 11087 |
| 3 | OpenCL Score | | PASS | 1569 |

Windows 10 64-bit

| Item | Weighted Suite | Test Environment | Result | Remark |
|------|-------------------|---|--------|--------|
| 1 | Single-Core Score | Intel(R) Core(TM) i7-12700E 4.80GHz | PASS | 2375 |
| 2 | Multi-Core Score | DSL DDR5 4800 32GB (SEC 240 K4RAH0B 6VB BCQK) | PASS | 13173 |
| 3 | OpenCL Score | innodisk DDR5 4800 32GB (SEC 149 K4RAH0B 6VB CQK) acpi M2PDD-8L 1TB | PASS | 1584 |

Windows 10 64-bit

| Item | Weighted Suite | Test Environment | Result | Remark |
|------|-------------------|--|--------|--------|
| 1 | Single-Core Score | Intel(R) Core(TM) i7-12700E 4.80GHz | PASS | 2374 |
| 2 | Multi-Core Score | DSL DDR5 4800 32GB (SEC 240 K4RAH0B 6VB BCQK) | PASS | 13179 |
| 3 | OpenCL Score | crucial DDR5 4800 32GB (Micro 2BA45 DB8NJ) acpi M2PDD-8L 1TB | PASS | 1573 |

Windows 10 64-bit

| Item | Weighted Suite | Test Environment | Result | Remark |
|------|-------------------|---|--------|--------|
| 1 | Single-Core Score | Intel(R) Core(TM) i7-12700E 4.80GHz | PASS | 2367 |
| 2 | Multi-Core Score | DSL DDR5 4800 32GB (SEC 240 K4RAH0B 6VB BCQK) | PASS | 12968 |
| 3 | OpenCL Score | ADATA DDR5 4800 16GB (SpecTek PT008-48B F 2144) acpi M2PDD-8L 1TB | PASS | 1570 |

Windows 10 64-bit

| Item | Weighted Suite | Test Environment | Result | Remark |
|------|-------------------|--|--------|--------|
| 1 | Single-Core Score | Intel(R) Core(TM) i7-12700E 4.80GHz innodisk DDR5 4800 32GB (SEC 149 K4RAH0B 6VB CQK) crucial DDR5 4800 32GB (Micro 2BA45 DB8NJ) acpi M2PDD-8L 1TB | PASS | 2371 |
| 2 | Multi-Core Score | | PASS | 13264 |
| 3 | OpenCL Score | | PASS | 1581 |

Windows 10 64-bit

| Item | Weighted Suite | Test Environment | Result | Remark |
|------|-------------------|---|--------|--------|
| 1 | Single-Core Score | Intel(R) Core(TM) i7-12700E 4.80GHz innodisk DDR5 4800 32GB (SEC 149 K4RAH0B 6VB CQK) ADATA DDR5 4800 16GB (SpecTek PT008-48B F 2144) acpi M2PDD-8L 1TB | PASS | 2368 |
| 2 | Multi-Core Score | | PASS | 13036 |
| 3 | OpenCL Score | | PASS | 1581 |

Windows 10 64-bit

| Item | Weighted Suite | Test Environment | Result | Remark |
|------|-------------------|---|--------|--------|
| 1 | Single-Core Score | Intel(R) Core(TM) i9-12900TE 4.80GHz crucial DDR5 4800 32GB*2 (Micro 2BA45 DB8NJ) acpi M2PDD-8L 1TB | PASS | 1883 |
| 2 | Multi-Core Score | | PASS | 12200 |
| 3 | OpenCL Score | | PASS | 1572 |

Windows 10 64-bit

| Item | Weighted Suite | Test Environment | Result | Remark |
|------|-------------------|---|--------|--------|
| 1 | Single-Core Score | Intel(R) Core(TM) i9-12900TE 4.80GHz crucial DDR5 4800 32GB (Micro 2BA45 DB8NJ) ADATA DDR5 4800 16GB (SpecTek PT008-48B F 2144) acpi M2PDD-8L 1TB | PASS | 1882 |
| 2 | Multi-Core Score | | PASS | 12086 |
| 3 | OpenCL Score | | PASS | 1576 |

Windows 10 64-bit

| Item | Weighted Suite | Test Environment | Result | Remark |
|------|-------------------|---|--------|--------|
| 1 | Single-Core Score | Intel(R) Core(TM) i9-12900TE 4.80GHz crucial DDR5 4800 32GB (Micro 2BA45 DB8NJ) acpi M2PDD-8L 1TB | PASS | 1863 |
| 2 | Multi-Core Score | | PASS | 10241 |
| 3 | OpenCL Score | | PASS | 1576 |

Windows 10 64-bit

| Item | Weighted Suite | Test Environment | Result | Remark |
|------|-------------------|--|--------|--------|
| 1 | Single-Core Score | Intel(R) Core(TM) i9-12900TE 4.80GHz ADATA DDR5 4800 16GB*2 (SpecTek PT008-48B F 2144) acpi M2PDD-8L 1TB | PASS | 1869 |
| 2 | Multi-Core Score | | PASS | 11923 |
| 3 | OpenCL Score | | PASS | 1566 |

Windows 10 64-bit

| Item | Weighted Suite | Test Environment | Result | Remark |
|------|-------------------|--|--------|--------|
| 1 | Single-Core Score | Intel(R) Core(TM) i9-12900TE 4.80GHz ADATA DDR5 4800 16GB (SpecTek PT008-48B F 2144) acpi M2PDD-8L 1TB | PASS | 1866 |
| 2 | Multi-Core Score | | PASS | 9797 |
| 3 | OpenCL Score | | PASS | 1562 |

Windows 10 64-bit

| Item | Weighted Suite | Test Environment | Result | Remark |
|------|-------------------|--|--------|--------|
| 1 | Single-Core Score | Intel(R) Core(TM) i9-12900TE 4.80GHz DSL DDR5 4800 32GB*2 (SEC 240 K4RAH0B 6VB BCQK) acpi M2PDD-8L 1TB | PASS | 1886 |
| 2 | Multi-Core Score | | PASS | 12227 |
| 3 | OpenCL Score | | PASS | 1574 |

Windows 10 64-bit

| Item | Weighted Suite | Test Environment | Result | Remark |
|------|-------------------|--|--------|--------|
| 1 | Single-Core Score | Intel(R) Core(TM) i9-12900TE 4.80GHz DSL DDR5 4800 32GB (SEC 240 K4RAH0B 6VB BCQK) acpi M2PDD-8L 1TB | PASS | 1869 |
| 2 | Multi-Core Score | | PASS | 10437 |
| 3 | OpenCL Score | | PASS | 1582 |

Windows 10 64-bit

| Item | Weighted Suite | Test Environment | Result | Remark |
|------|-------------------|--|--------|--------|
| 1 | Single-Core Score | Intel(R) Core(TM) i9-12900TE 4.80GHz innodisk DDR5 4800 32GB*2 (SEC 149 K4RAH0B 6VB CQK) acpi M2PDD-8L 1TB | PASS | 1885 |
| 2 | Multi-Core Score | | PASS | 12270 |
| 3 | OpenCL Score | | PASS | 1581 |

Windows 10 64-bit

| Item | Weighted Suite | Test Environment | Result | Remark |
|------|-------------------|--|--------|--------|
| 1 | Single-Core Score | Intel(R) Core(TM) i9-12900TE 4.80GHz innodisk DDR5 4800 32GB (SEC 149 K4RAH0B 6VB CQK) acpi M2PDD-8L 1TB | PASS | 1875 |
| 2 | Multi-Core Score | | PASS | 10378 |
| 3 | OpenCL Score | | PASS | 1571 |

Windows 10 64-bit

| Item | Weighted Suite | Test Environment | Result | Remark |
|------|-------------------|--|--------|--------|
| 1 | Single-Core Score | Intel(R) Core(TM) i9-12900TE 4.80GHz DSL DDR5 4800 32GB (SEC 240 K4RAH0B 6VB BCQK) innodisk DDR5 4800 32GB (SEC 149 K4RAH0B 6VB CQK) acpi M2PDD-8L 1TB | PASS | 1879 |
| 2 | Multi-Core Score | | PASS | 12359 |
| 3 | OpenCL Score | | PASS | 1584 |

Windows 10 64-bit

| Item | Weighted Suite | Test Environment | Result | Remark |
|------|-------------------|---|--------|--------|
| 1 | Single-Core Score | Intel(R) Core(TM) i9-12900TE 4.80GHz DSL DDR5 4800 32GB (SEC 240 K4RAH0B 6VB BCQK) crucial DDR5 4800 32GB (Micro 2BA45 DB8NJ) acpi M2PDD-8L 1TB | PASS | 1885 |
| 2 | Multi-Core Score | | PASS | 12306 |
| 3 | OpenCL Score | | PASS | 1561 |

Windows 10 64-bit

| Item | Weighted Suite | Test Environment | Result | Remark |
|------|-------------------|--|--------|--------|
| 1 | Single-Core Score | Intel(R) Core(TM) i9-12900TE 4.80GHz DSL DDR5 4800 32GB (SEC 240 K4RAH0B 6VB BCQK) ADATA DDR5 4800 16GB (SpecTek PT008-48B F 2144) acpi M2PDD-8L 1TB | PASS | 1885 |
| 2 | Multi-Core Score | | PASS | 11959 |
| 3 | OpenCL Score | | PASS | 1560 |

Windows 10 64-bit

| Item | Weighted Suite | Test Environment | Result | Remark |
|------|-------------------|---|--------|--------|
| 1 | Single-Core Score | Intel(R) Core(TM) i9-12900TE 4.80GHz innodisk DDR5 4800 32GB (SEC 149 K4RAH0B 6VB CQK) crucial DDR5 4800 32GB (Micro 2BA45 DB8NJ) acpi M2PDD-8L 1TB | PASS | 1888 |
| 2 | Multi-Core Score | | PASS | 12173 |
| 3 | OpenCL Score | | PASS | 1564 |

Windows 10 64-bit

| Item | Weighted Suite | Test Environment | Result | Remark |
|------|-------------------|--|--------|--------|
| 1 | Single-Core Score | Intel(R) Core(TM) i9-12900TE 4.80GHz innodisk DDR5 4800 32GB (SEC 149 K4RAH0B 6VB CQK) ADATA DDR5 4800 16GB (SpecTek PT008-48B F 2144) acpi M2PDD-8L 1TB | PASS | 1884 |
| 2 | Multi-Core Score | | PASS | 11900 |
| 3 | OpenCL Score | | PASS | 1566 |

Windows 10 64-bit

| Item | Weighted Suite | Test Environment | Result | Remark |
|------|-------------------|---|--------|--------|
| 1 | Single-Core Score | Intel(R) Core(TM) i9-12900 5.10GHz crucial DDR5 4800 32GB*2 (Micro 2BA45 DB8NJ) acpi M2PDD-8L 1TB | PASS | 2497 |
| 2 | Multi-Core Score | | PASS | 14915 |
| 3 | OpenCL Score | | PASS | 1567 |

Windows 10 64-bit

| Item | Weighted Suite | Test Environment | Result | Remark |
|------|-------------------|---|--------|--------|
| 1 | Single-Core Score | Intel(R) Core(TM) i9-12900 5.10GHz crucial DDR5 4800 32GB (Micro 2BA45 DB8NJ) ADATA DDR5 4800 16GB (SpecTek PT008-48B F 2144) acpi M2PDD-8L 1TB | PASS | 2489 |
| 2 | Multi-Core Score | | PASS | 14471 |
| 3 | OpenCL Score | | PASS | 1578 |

Windows 10 64-bit

| Item | Weighted Suite | Test Environment | Result | Remark |
|------|-------------------|---|--------|--------|
| 1 | Single-Core Score | Intel(R) Core(TM) i9-12900 5.10GHz crucial DDR5 4800 32GB (Micro 2BA45 DB8NJ) acpi M2PDD-8L 1TB | PASS | 2473 |
| 2 | Multi-Core Score | | PASS | 12056 |
| 3 | OpenCL Score | | PASS | 1556 |

Windows 10 64-bit

| Item | Weighted Suite | Test Environment | Result | Remark |
|------|-------------------|--|--------|--------|
| 1 | Single-Core Score | Intel(R) Core(TM) i9-12900 5.10GHz ADATA DDR5 4800 16GB*2 (SpecTek PT008-48B F 2144) acpi M2PDD-8L 1TB | PASS | 2459 |
| 2 | Multi-Core Score | | PASS | 11291 |
| 3 | OpenCL Score | | PASS | 1573 |

Windows 10 64-bit

| Item | Weighted Suite | Test Environment | Result | Remark |
|------|-------------------|--|--------|--------|
| 1 | Single-Core Score | Intel(R) Core(TM) i9-12900 5.10GHz ADATA DDR5 4800 16GB (SpecTek PT008-48B F 2144) acpi M2PDD-8L 1TB | PASS | 2460 |
| 2 | Multi-Core Score | | PASS | 11342 |
| 3 | OpenCL Score | | PASS | 1570 |

Windows 10 64-bit

| Item | Weighted Suite | Test Environment | Result | Remark |
|------|-------------------|--|--------|--------|
| 1 | Single-Core Score | Intel(R) Core(TM) i9-12900 5.10GHz DSL DDR5 4800 32GB*2 (SEC 240 K4RAH0B 6VB BCQK) acpi M2PDD-8L 1TB | PASS | 2495 |
| 2 | Multi-Core Score | | PASS | 15024 |
| 3 | OpenCL Score | | PASS | 1577 |

Windows 10 64-bit

| Item | Weighted Suite | Test Environment | Result | Remark |
|------|-------------------|--|--------|--------|
| 1 | Single-Core Score | Intel(R) Core(TM) i9-12900 5.10GHz DSL DDR5 4800 32GB (SEC 240 K4RAH0B 6VB BCQK) acpi M2PDD-8L 1TB | PASS | 2476 |
| 2 | Multi-Core Score | | PASS | 12093 |
| 3 | OpenCL Score | | PASS | 1572 |

Windows 10 64-bit

| Item | Weighted Suite | Test Environment | Result | Remark |
|------|-------------------|--|--------|--------|
| 1 | Single-Core Score | Intel(R) Core(TM) i9-12900 5.10GHz innodisk DDR5 4800 32GB*2 (SEC 149 K4RAH0B 6VB CQK) acpi M2PDD-8L 1TB | PASS | 2489 |
| 2 | Multi-Core Score | | PASS | 14808 |
| 3 | OpenCL Score | | PASS | 1572 |

Windows 10 64-bit

| Item | Weighted Suite | Test Environment | Result | Remark |
|------|-------------------|--|--------|--------|
| 1 | Single-Core Score | Intel(R) Core(TM) i9-12900 5.10GHz innodisk DDR5 4800 32GB (SEC 149 K4RAH0B 6VB CQK) acpi M2PDD-8L 1TB | PASS | 2475 |
| 2 | Multi-Core Score | | PASS | 12014 |
| 3 | OpenCL Score | | PASS | 1551 |

Windows 10 64-bit

| Item | Weighted Suite | Test Environment | Result | Remark |
|------|-------------------|--|--------|--------|
| 1 | Single-Core Score | Intel(R) Core(TM) i9-12900 5.10GHz DSL DDR5 4800 32GB (SEC 240 K4RAH0B 6VB BCQK) innodisk DDR5 4800 32GB (SEC 149 K4RAH0B 6VB CQK) acpi M2PDD-8L 1TB | PASS | 2474 |
| 2 | Multi-Core Score | | PASS | 12075 |
| 3 | OpenCL Score | | PASS | 1572 |

Windows 10 64-bit

| Item | Weighted Suite | Test Environment | Result | Remark |
|------|-------------------|---|--------|--------|
| 1 | Single-Core Score | Intel(R) Core(TM) i9-12900 5.10GHz DSL DDR5 4800 32GB (SEC 240 K4RAH0B 6VB BCQK) crucial DDR5 4800 32GB (Micro 2BA45 DB8NJ) acpi M2PDD-8L 1TB | PASS | 2496 |
| 2 | Multi-Core Score | | PASS | 15039 |
| 3 | OpenCL Score | | PASS | 1553 |

Windows 10 64-bit

| Item | Weighted Suite | Test Environment | Result | Remark |
|------|-------------------|--|--------|--------|
| 1 | Single-Core Score | Intel(R) Core(TM) i9-12900 5.10GHz | PASS | 2486 |
| 2 | Multi-Core Score | DSL DDR5 4800 32GB (SEC 240 K4RAH0B 6VB BCQK) ADATA DDR5 4800 16GB (SpecTek PT008-48B F 2144) | PASS | 14727 |
| 3 | OpenCL Score | acpi M2PDD-8L 1TB | PASS | 1575 |

Windows 10 64-bit

| Item | Weighted Suite | Test Environment | Result | Remark |
|------|-------------------|---|--------|--------|
| 1 | Single-Core Score | Intel(R) Core(TM) i9-12900 5.10GHz | PASS | 2496 |
| 2 | Multi-Core Score | innodisk DDR5 4800 32GB (SEC 149 K4RAH0B 6VB CQK) crucial DDR5 4800 32GB (Micro 2BA45 DB8NJ) | PASS | 15007 |
| 3 | OpenCL Score | acpi M2PDD-8L 1TB | PASS | 1579 |

Windows 10 64-bit

| Item | Weighted Suite | Test Environment | Result | Remark |
|------|-------------------|--|--------|--------|
| 1 | Single-Core Score | Intel(R) Core(TM) i9-12900 5.10GHz | PASS | 2488 |
| 2 | Multi-Core Score | innodisk DDR5 4800 32GB (SEC 149 K4RAH0B 6VB CQK) ADATA DDR5 4800 16GB (SpecTek PT008-48B F 2144) | PASS | 14575 |
| 3 | OpenCL Score | acpi M2PDD-8L 1TB | PASS | 1553 |

5.6 Storage Performance

5.6.1 HDD

Test environment:

OS Windows 10 64bit

Program: HD Tune

| HDD Model | Interface | Capacity | Average | Burst Rate | Access Time |
|---------------------------------------|-----------------|----------|------------------|-----------------|-------------|
| TOSHIBA DT01ACA200 | HDD | 2 TB | 153.4 MB/sec | 250.8 MB/sec | 12.6 ms |
| Western Digital WD20EFRX-68AX9N0 | HDD | 2 TB | 4.7 MB/sec | 218.7 MB/sec | 17 ms |
| Western Digital WD10EZEX-00WN4A0 | HDD | 1 TB | 143.7 MB/sec | 218 MB/sec | 18.8 ms |
| Western Digital WD5000BEKT-00PK4T0 | HDD | 500 GB | 92.8 MB/sec | 141.3 MB/sec | 16.1 ms |
| Western Digital WD3200AAKS-00B3A0 | HDD | 320 GB | 93.9 MB/sec | 129.1 MB/sec | 16.1 ms |
| Kingston Data Traveler | USB 3.0 | 32 GB | 118.9 MB/sec | 61.9 MB/sec | 0.7 ms |
| SMI USB | USB 2.0 | 8 GB | 12.3 MB/sec | 12.9 MB/sec | 0.9 ms |
| Transcend TS120GMTS420S | M.2 3042 SSD | 120 GB | 394.8 MB/sec | 122.1 MB/sec | 0.1 ms |
| acpi M2PDD-8L | M.2 2280 SSD | 1 TB | 1353.7 MB/sec | 198.6 MB/sec | 0 ms |
| acpi M2SCQ-8L | M.2 2280 SSD | 512 GB | 346.9 MB/sec | 133.2 MB/sec | 0.1 ms |
| acpi M2SCQ-8L | M.2 2280 SSD | 128 GB | 355.3 MB/sec | 93.2 MB/sec | 0.1 ms |

5.6.2 DVD-ROM

Test environment:

OS Windows 10 64bit

Program (NERO)

| DVD-ROM Model | Interface | Average Speed | Full Read | Burst Rate | DVD |
|-------------------------|-----------|---------------|-----------|------------|----------|
| PIONEER DVD DDVR-S19LBK | SATA | 11.3 x | 195 ms | 58 MB/s | 1 – 16 x |
| ASUS DRW-1814BLT | SATA | 8.24 x | 172 ms | 48 MB/s | 1 - 16 x |
| LG GH20NS15 | SATA | 11.25 x | 165 ms | 22 MB/s | 1 - 16 x |
| LITEON DVD eBAU108 | USB | 5.56 x | 228 ms | 18 MB/s | 1 – 16 x |
| LITEON DVD eTAU108 | USB | 5.67 x | 193 ms | 25 MB/s | 1 – 16 x |
| ZyNET DVD+RW GT32N | USB | 5.61 x | 212 ms | 25 MB/s | 1 - 16 x |