

LV-675

Test Report

Edition 1.01

2006/2/6



Test Engineer :

Identify:

Index

Index	2
1. Function test	4
1.1 Hardware function	4
1.2 BIOS function	6
1.3 Driver	8
2. Compatibility test	9
2.1 CPU Test	9
2.2 Memory Test	13
2.3 VGA Graphic Test	16
2.4 Audio Test	17
2.5 HDD Test	19
2.6 USB Test	27
2.7 Serial Port Test	29
2.8 IrDA Test	30
2.9 Keyboard Test	31
2.10 Mouse Test	33
2.11 LAN Module Test	34
2.12 Power Supply Test	35
2.13 CD-ROM Test	37
2.14 Floppy Drive Test	42
2.15 Printer Port Test	44
2.16 Boot Up Test	45
2.17 Os Install	45
3. Environmental test	46
3.1 Temperature Test	46
4. Reliability Test	47
4.1 Power Consumption Test	47
4.2 Thermal measurements at various points on the board	52
5. Performance Test	54

5.1 Content Creation WinStone 2001	54
5.2 Business WinStone 2002	55
5.3 Multimedia Content Creation Winstone 2003	56
5.4 Multimedia Content Creation Winstone 2004	57
5.5 3D MARK	58
5.6 PCMARK 2002	59
5.7 PCMARK 2004	60
5.8 PCMARK 2005	61

1. Function test

1.1 Hardware function

Base Function Test

1	Power Button	Pass
2	Reset	Pass
3	Power LED	Pass
4	HDD LED	Pass
5	IDE Primary Master	Pass
6	IDE Primary Slave	Pass
7	IDE Secondary Master	Pass
8	IDE Secondary Slave	Pass
9	Floppy	Pass
10	Compact Flash	N/A
11	DIMM	Pass
12	VGA Port	Pass
13	Keyboard	Pass
14	Mouse	Pass
15	AUDIO Port	Pass
16	COM 1	Pass
17	COM 2	Pass
18	Printer Port	Pass
19	IRDA	Pass
20	SYSFAN	Pass
21	CPUFAN	Pass
22	MINI PCI	Pass

2.0 PITCH (DIP)

1	JRTC	Pass
2	JVLCD	Pass
3	JLAN	Pass

1.2 BIOS function

Item	Description	Result	Remark
1	Press 'Del' to run Setup Utility	Pass	
2	Ctrl-Alt-Del – Soft-Reboot	Pass	
3	Save & Exit Setup	Pass	
4	Date & Time Setting	Pass	
5	Drive A	Pass	
6	AC97 Audio	Pass	
7	Quick Power On Self Test	Pass	
8	Boot Device Setting	Pass	
9	Boot Up Floppy Seek	Pass	
10	Boot Up Num Lock Status	Pass	
11	Boot Display	Pass	
12	Pannel Number	Pass	
13	On Chip Primary PCI IDE	Pass	
14	On Chip Secondary PCI IDE	Pass	
15	ACPI Suspend Type	Pass	
16	Onboard Lan Boot ROM	Pass	
17	Onboard Serial Port	Pass	
18	USB Controller	Pass	
19	USB 2.0 Controller	Pass	
20	USB Keyboard Support	Pass	
21	USB Mouse Support	Pass	
22	Onboard FDC Controller	Pass	
23	Soft-Off by PWRBTN	Pass	
24	Power On Function	Pass	
25	PS2MS Wakeup from S3 /S4 /S5	Pass	
26	PS2KB Wakeup from S3 /S4 /S5	Pass	

27	ACPI Function	Pass	
28	Wake-Up On LAN	Pass	
29	Resume by Alarm	Pass	
30	Watching Dog Timer Select	Pass	
31	Init Display First	Pass	
32	Onboard Parallel Port	Pass	
33	PWRON After PWR-Fail	Pass	
34	Power On by Ring	Pass	

1.3 Driver

1. Windows 98 SE Driver Test

Item	Description	Result	Remark
1	Chip set Driver	Pass	
2	VGA Driver	Pass	
3	Audio Driver	Pass	
4	LAN Driver	Pass	

2. Windows 2000 SP4 Driver Test

Item	Description	Result	Remark
1	Chip set Driver	Pass	
2	VGA Driver	Pass	
3	Audio Driver	Pass	
4	LAN Driver	Pass	

3. Windows XP SP2 Driver Test

	Description	Result	Remark
1	Chip set Driver	Pass	
2	VGA Driver	Pass	
3	Audio Driver	Pass	
4	LAN Driver	Pass	

4. LINUX Fedora Core 4 Driver Test

	Description	Result	Remark
1	Chip set Driver	Pass	
2	VGA Driver	Pass	
3	Audio Driver	Pass	
4	LAN Driver	Pass	

2. Compatibility test

2.1 CPU Test

Processor: Intel Pentium M 2.26GHZ

O.S: MS-DOS 6.22

Item	Description	Result	Remark
1	CPU Type Detect	Pass	
2	CPU Speed Detect	Pass	
3	OS Running Stability	Pass	

Windows 98

Item	Description	Result	Remark
1	CPU Type Detect	Pass	
2	CPU Speed Detect	Pass	
3	OS Running Stability	Pass	

Windows 2000

Item	Description	Result	Remark
1	CPU Type Detect	Pass	
2	CPU Speed Detect	Pass	
3	OS Running Stability	Pass	

Windows 2003 Server

Item	Description	Result	Remark
1	CPU Type Detect	Pass	
2	CPU Speed Detect	Pass	
3	OS Running Stability	Pass	

Windows XP

Item	Description	Result	Remark
1	CPU Type Detect	Pass	
2	CPU Speed Detect	Pass	
3	OS Running Stability	Pass	

Windows XP Embedded

Item	Description	Result	Remark
1	CPU Type Detect	Pass	
2	CPU Speed Detect	Pass	
3	OS Running Stability	Pass	

Linux Fedora Core 4

Item	Description	Result	Remark
1	CPU Type Detect	Pass	
2	CPU Speed Detect	Pass	
3	OS Running Stability	Pass	

Processor: Intel Pentium M 2.13GHZ

O.S: MS-DOS 6.22

Item	Description	Result	Remark
1	CPU Type Detect	Pass	
2	CPU Speed Detect	Pass	
3	OS Running Stability	Pass	

Windows 98

Item	Description	Result	Remark
1	CPU Type Detect	Pass	
2	CPU Speed Detect	Pass	
3	OS Running Stability	Pass	

Windows 2000

Item	Description	Result	Remark
1	CPU Type Detect	Pass	
2	CPU Speed Detect	Pass	
3	OS Running Stability	Pass	

Windows 2003 Server

Item	Description	Result	Remark
1	CPU Type Detect	Pass	
2	CPU Speed Detect	Pass	
3	OS Running Stability	Pass	

Windows XP

Item	Description	Result	Remark
1	CPU Type Detect	Pass	
2	CPU Speed Detect	Pass	
3	OS Running Stability	Pass	

Windows XP Embedded

Item	Description	Result	Remark
1	CPU Type Detect	Pass	
2	CPU Speed Detect	Pass	
3	OS Running Stability	Pass	

Linux Fedora Core 4

Item	Description	Result	Remark
1	CPU Type Detect	Pass	
2	CPU Speed Detect	Pass	
3	OS Running Stability	Pass	

2.2 Memory Test

1. SAMSUNG DDR 333 512MB (K4H560838D-TCB3)

Item	Description	Result	Remark
1	Boot	Pass	
2	MS-DOS 6.22	Pass	
3	Windows 98	Pass	
4	Windows 2000	Pass	
5	Windows 2003 Server	Pass	
6	Windows XP	Pass	
7	Windows XP Embedded	Pass	
8	Linux Fedora	Pass	

2. Hynix DDR 400 1GB (HY5DU12822AT-D43)

Item	Description	Result	Remark
1	Boot	Pass	
2	MS-DOS 6.22	Pass	
3	Windows 98	Pass	
4	Windows 2000	Pass	
5	Windows 2003 Server	Pass	
6	Windows XP	Pass	
7	Windows XP Embedded	Pass	
8	Linux Fedora	Pass	

3. KINGMAX DDR 333 512MB(KDL388P4EA-60)

Item	Description	Result	Remark
1	Boot	Pass	
2	MS-DOS 6.22	Pass	
3	Windows 98	Pass	
4	Windows 2000	Pass	
5	Windows 2003 Server	Pass	
6	Windows XP	Pass	
7	Windows XP Embedded	Pass	
8	Linux Fedora	Pass	

4. ELIXIR DDR 266 128MB (N2DS12H80AT-75B)

Item	Description	Result	Remark
1	Boot	Pass	
2	MS-DOS 6.22	Pass	
3	Windows 98	Pass	
4	Windows 2000	Pass	
5	Windows 2003 Server	Pass	
6	Windows XP	Pass	
7	Windows XP Embedded	Pass	
8	Linux Fedora	Pass	

5. SAMSUNG DDR 333 1GB (K4H560438D-TCB3)

Item	Description	Result	Remark
1	Boot	Pass	
2	MS-DOS 6.22	Pass	
3	Windows 98	Pass	
4	Windows 2000	Pass	
5	Windows 2003 Server	Pass	
6	Windows XP	Pass	
7	Windows XP Embedded	Pass	
8	Linux Fedora	Pass	

2.3 VGA Graphic Test

1. Windows 2000

Item	Description	Result	Remark
1	Driver Install	Pass	
2	Resolution/Color Change	Pass	
3	Dual View Test	Pass	With LVDS LCD PANEL
4	CRT Display Test	Pass	
5	CRT Display Quality Test	Pass	

2. Windows XP

Item	Description	Result	Remark
1	Driver Install	Pass	
2	Resolution/Color Change	Pass	
3	Dual View Test	Pass	With LVDS LCD PANEL
4	CRT Display Test	Pass	
5	CRT Display Quality Test	Pass	

3. Linux Fedora Core 4

Item	Description	Result	Remark
1	Driver Install	Pass	
2	Resolution/Color Change	Pass	
3	CRT Display Test	Pass	
4	CRT Display Quality Test	Pass	

2.4 Audio Test

1. Windows 98

Item	Description	Result	Remark
1	Driver Install	Pass	
2	Speaker Left	Pass	
3	Speaker Right	Pass	
4	Sound Effect	Pass	
5	Equalizer	Pass	
6	Micophone	Pass	

2. Windows 2000

Item	Description	Result	Remark
1	Driver Install	Pass	
2	Speaker Left	Pass	
3	Speaker Right	Pass	
4	Sound Effect	Pass	
5	Equalizer	Pass	
6	Micophone	Pass	

3. Windows 2003 Server

Item	Description	Result	Remark
1	Driver Install	Pass	
2	Speaker Left	Pass	
3	Speaker Right	Pass	
4	Sound Effect	Pass	
5	Equalizer	Pass	
6	Micophone	Pass	

4. Windows XP

Item	Description	Result	Remark
1	Driver Install	Pass	
2	Speaker Left	Pass	
3	Speaker Right	Pass	
4	Sound Effect	Pass	
5	Equalizer	Pass	
6	Microphone	Pass	

5. Linux Fedora Core 4

Item	Description	Result	Remark
1	Driver Install	Pass	
2	Speaker Left	Pass	
3	Speaker Right	Pass	
4	Microphone	Pass	

2.5 HDD Test

Model: Western Digital WD2500JB-00GVC0 250GB

1. MS-DOS 6.22

Item	Description	Result	Remark
1	HDD Size Detect	Pass	
2	HDD Read/Write	Pass	
3	HDD Partition/Format	Pass	
4	HDD LED Check	Pass	

2. Windows 98

Item	Description	Result	Remark
1	HDD Detect	Pass	
2	HDD Read/Write	Pass	
3	HDD Data Transfer	Pass	
4	HDD Format	Pass	
5	HDD LED Check	Pass	

3. Windows 2000

Item	Description	Result	Remark
1	HDD Detect	Pass	
2	HDD Read/Write	Pass	
3	HDD Data Transfer	Pass	
4	HDD Format	Pass	
5	HDD LED Check	Pass	

4. Windows 2003 Server

Item	Description	Result	Remark
1	HDD Detect	Pass	
2	HDD Read/Write	Pass	
3	HDD Data Transfer	Pass	
4	HDD Format	Pass	
5	HDD LED Check	Pass	

5. Windows XP

Item	Description	Result	Remark
1	HDD Detect	Pass	
2	HDD Read/Write	Pass	
3	HDD Data Transfer	Pass	
4	HDD Format	Pass	
5	HDD LED Check	Pass	

6. Linux Fedora Core 4

Item	Description	Result	Remark
1	HDD Detect	Pass	
2	HDD Read/Write	Pass	
3	HDD Data Transfer	Pass	
4	HDD Format	Pass	
5	HDD LED Check	Pass	

Model: Western Digital WD400EB-00CPF0 40GB

1. MS-DOS 6.22

Item	Description	Result	Remark
1	HDD Size Detect	Pass	
2	HDD Read/Write	Pass	
3	HDD Partition/Format	Pass	
4	HDD LED Check	Pass	

2. Windows 98

Item	Description	Result	Remark
1	HDD Detect	Pass	
2	HDD Read/Write	Pass	
3	HDD Data Transfer	Pass	
4	HDD Format	Pass	
5	HDD LED Check	Pass	

3. Windows 2000

Item	Description	Result	Remark
1	HDD Detect	Pass	
2	HDD Read/Write	Pass	
3	HDD Data Transfer	Pass	
4	HDD Format	Pass	
5	HDD LED Check	Pass	

4. Windows 2003 Server

Item	Description	Result	Remark
1	HDD Detect	Pass	
2	HDD Read/Write	Pass	
3	HDD Data Transfer	Pass	
4	HDD Format	Pass	
5	HDD LED Check	Pass	

5. Windows XP

Item	Description	Result	Remark
1	HDD Detect	Pass	
2	HDD Read/Write	Pass	
3	HDD Data Transfer	Pass	
4	HDD Format	Pass	
5	HDD LED Check	Pass	

6. Linux Fedora Core 4

Item	Description	Result	Remark
1	HDD Detect	Pass	
2	HDD Read/Write	Pass	
3	HDD Data Transfer	Pass	
4	HDD Format	Pass	
5	HDD LED Check	Pass	

Model: HITACHI IC25N020ATMR04-0 20GB

1. MS-DOS 6.22

Item	Description	Result	Remark
1	HDD Size Detect	Pass	
2	HDD Read/Write	Pass	
3	HDD Partition/Format	Pass	
5	HDD LED Check	Pass	

2. Windows 98

Item	Description	Result	Remark
1	HDD Detect	Pass	
2	HDD Read/Write	Pass	
3	HDD Data Transfer	Pass	
4	HDD Format	Pass	
5	HDD LED Check	Pass	

3. Windows 2000

Item	Description	Result	Remark
1	HDD Detect	Pass	
2	HDD Read/Write	Pass	
3	HDD Data Transfer	Pass	
4	HDD Format	Pass	
5	HDD LED Check	Pass	

4. Windows 2003 Server

Item	Description	Result	Remark
1	HDD Detect	Pass	
2	HDD Read/Write	Pass	
3	HDD Data Transfer	Pass	
4	HDD Format	Pass	
5	HDD LED Check	Pass	

5. Windows XP

Item	Description	Result	Remark
1	HDD Detect	Pass	
2	HDD Read/Write	Pass	
3	HDD Data Transfer	Pass	
4	HDD Format	Pass	
5	HDD LED Check	Pass	

6. Linux Fedora Core 4

Item	Description	Result	Remark
1	HDD Detect	Pass	
2	HDD Read/Write	Pass	
3	HDD Data Transfer	Pass	
4	HDD Format	Pass	
5	HDD LED Check	Pass	

Model:Seagate ST320414A 20GB

1. MS-DOS 6.22

Item	Description	Result	Remark
1	HDD Size Detect	Pass	
2	HDD Read/Write	Pass	
3	HDD Partition/Format	Pass	
4	HDD LED Check	Pass	

2. Windows 98

Item	Description	Result	Remark
1	HDD Detect	Pass	
2	HDD Read/Write	Pass	
3	HDD Data Transfer	Pass	
4	HDD Format	Pass	
5	HDD LED Check	Pass	

3. Windows 2000

Item	Description	Result	Remark
1	HDD Detect	Pass	
2	HDD Read/Write	Pass	
3	HDD Data Transfer	Pass	
4	HDD Format	Pass	
5	HDD LED Check	Pass	

4. Windows XP

Item	Description	Result	Remark
1	HDD Detect	Pass	
2	HDD Read/Write	Pass	
3	HDD Data Transfer	Pass	
4	HDD Format	Pass	
5	HDD LED Check	Pass	

5. Suse-Linux 10

Item	Description	Result	Remark
1	HDD Detect	Pass	
2	HDD Read/Write	Pass	
3	HDD Data Transfer	Pass	
4	HDD Format	Pass	
5	HDD LED Check	Pass	

2.6 USB Test

1. Windows 98

Item	Description	Result	Remark
1	Device Manager Check	Pass	
2	External USB Keyboard Test	Pass	
3	External USB Mouse Test	Pass	
5	Direct Connect by USB Test	Pass	
6	Hot plugging test	Pass	

2. Windows 2000

Item	Description	Result	Remark
1	Device Manager Check	Pass	
2	External USB Keyboard Test	Pass	
3	External USB Mouse Test	Pass	
5	Direct Connect by USB Test	Pass	
6	Hot plugging test	Pass	

3. Windows 2003 Server

Item	Description	Result	Remark
1	Device Manager Check	Pass	
2	External USB Keyboard Test	Pass	
3	External USB Mouse Test	Pass	
5	Direct Connect by USB Test	Pass	
6	Hot plugging test	Pass	

4. Windows XP

Item	Description	Result	Remark
1	Device Manager Check	Pass	
2	External USB Keyboard Test	Pass	
3	External USB Mouse Test	Pass	
5	Direct Connect by USB Test	Pass	
6	Hot plugging test	Pass	

2.7 Serial Port Test

1. Windows 2000

Item	Description	Result	Remark
1	Device Manager Check	Pass	
2	Driver Install	Pass	
3	RS-232 Mouse Test (PNP)	Pass	
4	RS-232 Modem Test (PNP)	Pass	
5	B&B Electronics COM Port RS-232 Test (W/Loop-Back)	Pass	

2. Windows XP

Item	Description	Result	Remark
1	Device Manager Check	Pass	
2	Driver Install	Pass	
3	RS-232 Mouse Test (PNP)	Pass	
4	RS-232 Modem Test (PNP)	Pass	
5	B&B Electronics COM Port RS-232 Test (W/Loop-Back)	Pass	

2.8 IrDA Test

1. Windows 2000

Item	Description	Result	Remark
1	Device Manager Check	Pass	
2	SIR Mode Data Transfer Test	Pass	
3	SIR Data Transfer Quality Test	Pass	
4	SIR Loop-Back Test	Pass	

2. Windows 2003 Server

Item	Description	Result	Remark
1	Device Manager Check	Pass	
2	SIR Mode Data Transfer Test	Pass	
3	SIR Data Transfer Quality Test	Pass	
4	SIR Loop-Back Test	Pass	

3. Windows XP

Item	Description	Result	Remark
1	Device Manager Check	Pass	
2	SIR Mode Data Transfer Test	Pass	
3	SIR Data Transfer Quality Test	Pass	
4	SIR Loop-Back Test	Pass	

2.9 Keyboard Test

1. MS-DOS 6.22

Item	Description	Result	Remark
1	Keyboard LED Status Test	Pass	
2	Keyboard Command Test	Pass	
3	Keyboard Typing Test	Pass	

2. Windows 98

Item	Description	Result	Remark
1	Device Manager Check	Pass	
2	Keyboard LED Status Test	Pass	
3	Keyboard Typing Test	Pass	

3. Windows 2000

Item	Description	Result	Remark
1	Device Manager Check	Pass	
2	Keyboard LED Status Test	Pass	
3	Keyboard Typing Test	Pass	

4. Windows 2003 Server

Item	Description	Result	Remark
1	Device Manager Check	Pass	
2	Keyboard LED Status Test	Pass	
3	Keyboard Typing Test	Pass	

5. Windows XP

Item	Description	Result	Remark
1	Device Manager Check	Pass	
2	Keyboard LED Status Test	Pass	
3	Keyboard Typing Test	Pass	

6. LINUX Fedora Core 4

Item	Description	Result	Remark
1	Device Manager Check	Pass	
2	Keyboard LED Status Test	Pass	
3	Keyboard Typing Test	Pass	

2.10 Mouse Test

1. Windows 98

Item	Description	Result	Remark
1	Device Manager Check	Pass	
2	Mouse Detect Test (PNP)	Pass	
3	Dos Mode Mouse Test	Pass	

2. Windows 2000

Item	Description	Result	Remark
1	Device Manager Check	Pass	
2	Mouse Detect Test (PNP)	Pass	
3	Dos Mode Mouse Test	Pass	

3. Windows 2003 Server

Item	Description	Result	Remark
1	Device Manager Check	Pass	
2	Mouse Detect Test (PNP)	Pass	
3	Dos Mode Mouse Test	Pass	

4. Windows XP

Item	Description	Result	Remark
1	Device Manager Check	Pass	
2	Mouse Detect Test (PNP)	Pass	
3	Dos Mode Mouse Test	Pass	

5. LINUX Fedora Core 4

Item	Description	Result	Remark
1	Device Manager Check	Pass	
2	Mouse Detect Test (PNP)	Pass	

2.11 LAN Module Test

1. Windows 98

Item	Description	Result	Remark
1	LAN Module Install Test	Pass	
2	Driver Install	Pass	
3	Device Manager Check	Pass	
4	Data Transfer Test	Pass	

2. Windows 2000

Item	Description	Result	Remark
1	LAN Module Install Test	Pass	
2	Driver Install	Pass	
3	Device Manager Check	Pass	
4	Data Transfer Test	Pass	

3. Windows XP

Item	Description	Result	Remark
1	LAN Module Install Test	Pass	
2	Driver Install	Pass	
3	Device Manager Check	Pass	
4	Data Transfer Test	Pass	

4. LINUX Fedora Core 4

Item	Description	Result	Remark
1	LAN Module Install Test	Pass	
2	Driver Install	Pass	
3	Device Manager Check	Pass	
4	Data Transfer Test	Pass	

2.12 Power Supply Test

1. MS-DOS 6.22

Item	Description	Verification	
		Result	Remark
1	ATX Power On/Off	Pass	Seven team ST-300BLV(300W)
2	ATX Power On/Off	Pass	CMT SFX-200CPS3C-TL(200W)
3.	ATX Power On/Off	Pass	FSP FSP180-50PLA(180W)

2. Windows 98

Item	Description	Verification	
		Result	Remark
1	ATX Power On/Off	Pass	Seven team ST-300BLV(300w)
2	ATX Power On/Off	Pass	CMT SFX-200CPS3C-TL(200W)
3	ATX Power On/Off	Pass	FSP FSP180-50PLA(180W)

3. Windows 2000

Item	Description	Verification	
		Result	Remark
1	ATX Power On/Off	Pass	Seven team ST-300BLV(300W)
2	ATX Power On/Off	Pass	CMT SFX-200CPS3C-TL(200W)
3	ATX Power On/Off	Pass	FSP FSP180-50PLA(180W)

4. Windows XP

Item	Description	Verification	
		Result	Remark
1	ATX Power On/Off	Pass	Seven team ST-300BLV(300W)
2	ATX Power On/Off	Pass	CMT SFX-200CPS3C-TL(200W)
3	ATX Power On/Off	Pass	FSP FSP180-50PLA(180W)

5. LINUX Fedora Core 4

Item	Description	Verification	
		Result	Remark
1	ATX Power On/Off	Pass	Seven team ST-300BLV(300W)
2	ATX Power On/Off	Pass	CMT SFX-200CPS3C-TL(200W)
3	ATX Power On/Off	Pass	FSP FSP180-50PLA(180W)

2.13 CD-ROM Test

Model: ATAPI A52T

1. MS-DOS 6.22

Item	Description	Result	Remark
1	CD-ROM Detect	Pass	
2	CD-ROM Read	Pass	
3	CD-ROM Bootable	Pass	
4	CD-ROM Data Transfer	Pass	

2. Windows 98

Item	Description	Result	Remark
1	CD-ROM Detect	Pass	
2	CD-ROM Read	Pass	
3	CD-ROM Data Transfer	Pass	

3. Windows 2000

Item	Description	Result	Remark
1	CD-ROM Detect	Pass	
2	CD-ROM Read	Pass	
3	CD-ROM Data Transfer	Pass	

4. Windows 2003 Server

Item	Description	Result	Remark
1	CD-ROM Detect	Pass	
2	CD-ROM Read	Pass	
3	CD-ROM Data Transfer	Pass	

5. Windows XP

Item	Description	Result	Remark
1	CD-ROM Detect	Pass	
2	CD-ROM Read	Pass	
3	CD-ROM Data Transfer	Pass	

6. Linux Fedora Core 4

Item	Description	Result	Remark
1	CD-ROM Detect	Pass	
2	CD-ROM Read	Pass	
3	CD-ROM Data Transfer	Pass	

Model: ASUS CD-S400/A

1. MS-DOS 6.22

Item	Description	Result	Remark
1	CD-ROM Detect	Pass	
2	CD-ROM Read	Pass	
3	CD-ROM Bootable	Pass	
4	CD-ROM Data Transfer	Pass	

2. Windows 98

Item	Description	Result	Remark
1	CD-ROM Detect	Pass	
2	CD-ROM Read	Pass	
3	CD-ROM Data Transfer	Pass	

3. Windows 2000

Item	Description	Result	Remark
1	CD-ROM Detect	Pass	
2	CD-ROM Read	Pass	
3	CD-ROM Data Transfer	Pass	

4. Windows 2003 Server

Item	Description	Result	Remark
1	CD-ROM Detect	Pass	
2	CD-ROM Read	Pass	
3	CD-ROM Data Transfer	Pass	

5. Windows XP

Item	Description	Result	Remark
1	CD-ROM Detect	Pass	
2	CD-ROM Read	Pass	
3	CD-ROM Data Transfer	Pass	

6. LINUX Fedora Core 4

Item	Description	Result	Remark
1	CD-ROM Detect	Pass	
2	CD-ROM Read	Pass	
3	CD-ROM Data Transfer	Pass	

Model: Pioneer DVD 820

1. MS-DOS 6.22

Item	Description	Result	Remark
1	CD-ROM Detect	Pass	
2	CD-ROM Read	Pass	
3	CD-ROM Bootable	Pass	
4	CD-ROM Data Transfer	Pass	

2. Windows 98

Item	Description	Result	Remark
1	CD-ROM Detect	Pass	
2	CD-ROM Read	Pass	
3	CD-ROM Data Transfer	Pass	

3. Windows 2000

Item	Description	Result	Remark
1	CD-ROM Detect	Pass	
2	CD-ROM Read	Pass	
3	CD-ROM Data Transfer	Pass	

4. Windows 2003 Server

Item	Description	Result	Remark
1	CD-ROM Detect	Pass	
2	CD-ROM Read	Pass	
3	CD-ROM Data Transfer	Pass	

5. Windows XP

Item	Description	Result	Remark
1	CD-ROM Detect	Pass	
2	CD-ROM Read	Pass	
3	CD-ROM Data Transfer	Pass	

6. Fedora Core 4 (Linux)

Item	Description	Result	Remark
1	CD-ROM Detect	Pass	
2	CD-ROM Read	Pass	
3	CD-ROM Data Transfer	Pass	

Model: QSI DVD SDR-083

1. MS-DOS 6.22

Item	Description	Result	Remark
1	CD-ROM Detect	Pass	
2	CD-ROM Read	Pass	
3	CD-ROM Bootable	Pass	
4	CD-ROM Data Transfer	Pass	

2. Windows 98

Item	Description	Result	Remark
1	CD-ROM Detect	Pass	
2	CD-ROM Read	Pass	
3	CD-ROM Data Transfer	Pass	

3. Windows 2000

Item	Description	Result	Remark
1	CD-ROM Detect	Pass	
2	CD-ROM Read	Pass	
3	CD-ROM Data Transfer	Pass	

4. Windows 2003 Server

Item	Description	Result	Remark
1	CD-ROM Detect	Pass	
2	CD-ROM Read	Pass	
3	CD-ROM Data Transfer	Pass	

5. Windows XP

Item	Description	Result	Remark
1	CD-ROM Detect	Pass	
2	CD-ROM Read	Pass	
3	CD-ROM Data Transfer	Pass	

6. Linux Fedora Core 4

Item	Description	Result	Remark
1	CD-ROM Detect	Pass	
2	CD-ROM Read	Pass	
3	CD-ROM Data Transfer	Pass	

2.14 Floppy Drive Test

Model: TEAC (CD-05HG)

1. MS-DOS 6.22

Item	Description	Result	Remark
1	Floppy Drive Detect	Pass	
2	Floppy Read/Write	Pass	
3	Boot from Floppy	Pass	
4	Floppy Data Transfer	Pass	

2. Windows 98

Item	Description	Result	Remark
1	Floppy Drive Detect	Pass	
2	Floppy Read/Write	Pass	
3	Floppy Data Transfer	Pass	

3. Windows 2000

Item	Description	Result	Remark
1	Floppy Drive Detect	Pass	
2	Floppy Read/Write	Pass	
3	Floppy Data Transfer	Pass	

4. Windows 2003 Server

Item	Description	Result	Remark
1	Floppy Drive Detect	Pass	
2	Floppy Read/Write	Pass	
3	Floppy Data Transfer	Pass	

5. Windows XP

Item	Description	Result	Remark
1	Floppy Drive Detect	Pass	
2	Floppy Read/Write	Pass	
3	Floppy Data Transfer	Pass	

6. LINUX Fedora Core 4

Item	Description	Result	Remark
1	Floppy Drive Detect	Pass	
2	Floppy Read/Write	Pass	
3	Floppy Data Transfer	Pass	

2.15 Printer Port Test

1. Windows 2000

Item	Description	Result	Remark
1	ECP/EPP PRINT TEST	Pass	

2. Windows XP

Item	Description	Result	Remark
1	ECP/EPP PRINT TEST	Pass	

2.16 Boot Up Test

Item	Description	Result	Remark
1	Soft boot from HDD	Pass	Times
2	Soft boot from CD-ROM	Pass	Times
3	Reboot test with Win 98	Pass	Times
4	Reboot test with Win 2000	Pass	Times
5	Reboot test with Win 2003 Server	Pass	Times
6	Reboot test with Win XP	Pass	Times
7	Windows XP Embedded	Pass	Times
8	Reboot test with Linux "Fedora Core4"	Pass	Times

2.17 Os Install

Item	Description	Result	Remark
1	Windows 98	PASS	
2	Windows ME		
3	Windows 2000 SP4	PASS	
4	Windows 2000 Server		
5	Windows XP SP2	PASS	
6	Windows XP Embedded	PASS	
7	Windows 2003 Server Standard Edition	PASS	
8	Windows NT		
9	Linux "Red Hat 9.0"		
10	Linux "Suse 10"		
11	Linux "Fedora Core4"	PASS	
12	Linux "Open Linux"		

3. Environmental test

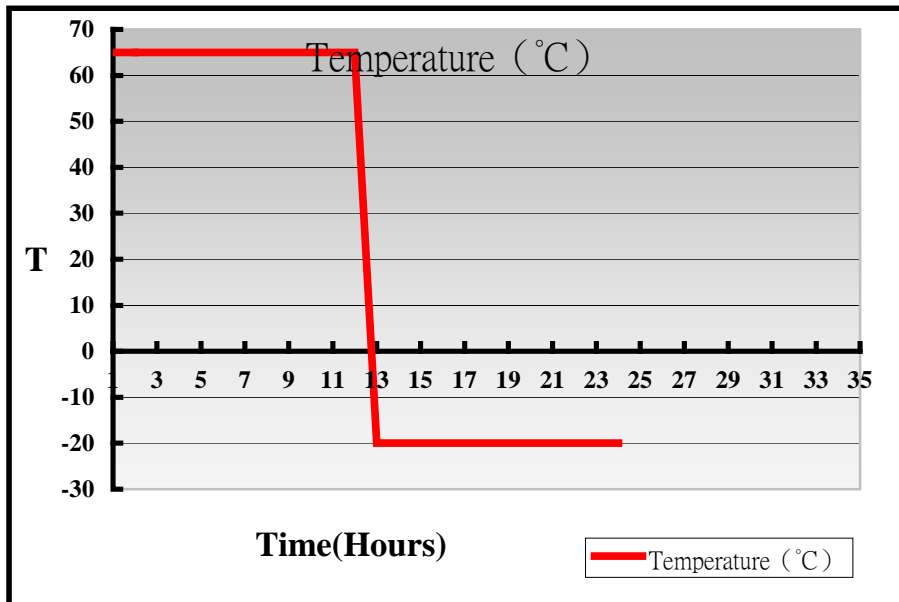
3.1 Temperature Test

Hardware Device list:

System Board	LV-675
CPU	Intel Pentium M 2.26GHZ
Memory	HYNIX DDR 400 1GB
HDD	Western Digital WD2500JB-00GVC0 250GB
KEYBOARD	KRONE K9810
MOUSE	DCS USBMOUSE
Test Equipment	THERMOTRON 2800 Programmer/Controller
Test Program	BCM

Test Result:

Item	Description	Result	Remark
1	65°C RUN 3Dmark03	Pass	
2	-20°C Boot Test	Pass	



4. Reliability Test

4.1 Power Consumption Test

1.Test Environment:

CPU	Pentium M 2.26GHZ
Memory	HYNIX DDR 400 1GB
Test OS	Windows XP
Test Program	3DMARK 2003

Test Result:

Voltae	Current (A)	Power (W)	Remark
5V	6.32	31.6	
12V	0.24	2.88	
3.3V	4.64	16.302	

2.Test Environment:

CPU	Pentium M 2.26GHZ
Memory	HYNIX DDR 400 1GB
HDD	Western Digital WD2500 250GB
Test OS	Windows XP
Test Program	3DMARK 2003

Test Result:

Voltae	Current (A)	Power (W)	Remark
5V	6.99	34.95	
12V	0.67	8.04	
3.3V	4.95	16.335	

3.Test Environment:

CPU	Pentium M 2.26GHZ
Memory	HYNIX DDR 400 1GB
HDD	Western Digital WD2500 250GB
15" Pannel	LG LM150X08 (Dual Display)
Test OS	Windows XP
Test Program	3DMARK 2003

Test Result:

Voltae	Current (A)	Power (W)	Remark
5V	7.2	36.0	
12V	0.49	5.88	
3.3V	5.63	18.579	

4.Test Environment:

CPU	Pentium M 2.26GHZ
Memory	HYNIX DDR 400 1GB
HDD	Western Digital WD2500 250GB
CDROM	TEAC CD-540E 52X
Test Program	3DMARK 2003

Test Result:

Voltae	Current (A)	Power (W)	Remark
5V	7.14	35.7	
12V	0.82	9.84	
3.3V	4.95	16.335	

5.Test Environment:

CPU	Pentium M 2.26GHZ
Memory	HYNIX DDR 400 1GB
HDD1	Western Digital WD2500 250GB
HDD2	Seagate ST34321A 4.3GB
FDD	TEAC FD-05HG
CDROM	TEAC CD-540E 52X
Test OS	Windows XP
Test Program	3DMARK 2003

Test Result:

Voltae	Current (A)	Power (W)	Remark
5V	7.88	39.4	
12V	0.98	11.76	
3.3V	4.99	16.467	

6.Test Environment:

CPU	Pentium M 2.26GHZ
Memory	HYNIX DDR 400 1GB
HDD1	Western Digital WD2500 250GB
HDD2	Seagate ST343D321A 4.3GB
FDD	TEAC FD-05HG
IrDA	ACT-IR210L
Mini-PCI WLAN	TwinMOS 802.11g
CDROM	TEAC CD-540E 52X
Test OS	Windows XP
Test Program	3DMARK 2003

Test Result:

Voltae	Current (A)	Power (W)	Remark
5V	7.92	39.6	
12V	1.52	17.24	
3.3V	5.13	16.929	

7.Test Environment:

CPU	Pentium M 2.26GHZ
Memory	HYNIX DDR 400 1GB
Monitor1	HANNS • G JC151A
Monitor2	LG LM150X08 (Dual Display)
HDD1	Western Digital WD2500 250GB
HDD2	Seagate ST343D321A 4.3GB
FDD	TEAC FD-05HG
IrDA	ACT-IR210L
Mini-PCI WLAN	TwinMOS 802.11g
CDROM	TEAC CD-540E 52X
Test OS	Windows XP
Test Program	3DMARK 2003

Test Result:

Voltae	Current (A)	Power (W)	Remark
5V	7.98	39.9	
12V	1.76	21.02	
3.3V	5.9	19.47	

4.2 Thermal measurements at various points on the board

Test Environment A:

CPU	Pentium M 2.26GHZ
Memory	HYNIX DDR 400 1GB
HDD	Western Digital WD2500 250GB
15" LCD PANNEL	LG LM150X80
CDROM	TEAC CD-540E 52X
Test Program	3DMark 2003

Test Result:

CPU	53.0°C
NB	53.3°C
SB	50.2°C
U9	52.5°C
U6	53.3°C
U4	70.6°C
Q19	71.0°C

Test Environment B:

CPU	Pentium M 2.26GHZ
Memory	HYNIX DDR 400 1GB
HDD	Western Digital WD2500 250GB
15" LCD PANNEL	LG LM150X80
CRDROM	TEAC CD-540E 52X
Test Program	Multimedia Content Creation Winstone 2004

Test Result:

CPU	52.0°C
NB	49.5°C
SB	54.1°C
U3	58.1°C
U6	53.3°C
U4	67.6°C
Q19	75.3°C

5. Performance Test

5.1 Content Creation WinStone 2001

Processor: Intel Pentium M 2.26GHZ

1. Windows 2000

Item	WEIGHTED SUITE	Result	Remark
1	Business Win stone 2001 Win stone 2001 Scores	Pass	112.5 108.7 110.4 110.4 109.6

2. Windows XP

Item	WEIGHTED SUITE	Result	Remark
1	Business Win stone 2001 Win stone 2001 Scores	Pass	123.8 132.9 131.4 131.6 131.0

5.2 Business WinStone 2002

Processor: Intel Pentium M 2.26GHZ

1. Windows 2000

Item	WEIGHTED SUITE	Result	Remark
1	Business Win stone 2002 Win stone 2002 Scores	Pass	35.3 35.9 36.1 35.9 32.9

2. Windows XP

Item	WEIGHTED SUITE	Result	Remark
1	Business Win stone 2002 Win stone 2002 Scores	Pass	33.4 38.5 39.0 37.7 38.4

5.3 Multimedia Content Creation Winstone 2003

1. Windows XP

Item	WEIGHTED SUITE	Result	Remark
1	Multimedia Content Creation Winstone 2003 Scores	Pass	34.0 32.9 58.1 60.8 60.6

5.4 Multimedia Content Creation Winstone 2004

1. Windows 2000

Item	WEIGHTED SUITE	Result	Remark
1	Multimedia Content Creation Winstone 2004 Scores	Pass	27.1 27.4 27.3 27.3 27.4

2. Windows XP

Item	WEIGHTED SUITE	Result	Remark
1	Multimedia Content Creation Winstone 2004 Scores	Pass	30.2 30.3 30.3 30.4 30.3

5.5 3D MARK

Processor: Intel Pentium M 2.26GHZ

1. Windows 2000

Item	WEIGHTED SUITE	Result	Remark
1	3DMARK2000 Scores	Pass	3690
2	3DMARK2001 Scores	Pass	2234
3	3DMARK2003 Scores	Pass	84

2. Windows XP

Item	WEIGHTED SUITE	Result	Remark
1	3DMARK2000 Scores	Pass	3752
2	3DMARK2001 Scores	Pass	2173
3	3DMARK2003 Scores	Pass	62

5.6 PCMARK 2002

Processor: Intel Pentium M 2.26GHZ

1. Windows 2000

Item	WEIGHTED SUITE	Result	Remark
1	CPU Score	Pass	7699
2	Memory Score	Pass	12662
3	HDD Score	Pass	503

2. Windows XP

Item	WEIGHTED SUITE	Result	Remark
1	CPU Score	Pass	7643
2	Memory Score	Pass	12955
3	HDD Score	Pass	1424

5.7 PCMARK 2004

Processor: Intel Pentium M 2.26GHZ

1. Windows 2000

Item	WEIGHTED SUITE	Result	Remark
1	CPU Score	Pass	N/A
2	Memory Score	Pass	3068
3	Graphics Score	Pass	714
4	HDD Score	Pass	2083

2. Windows XP

Item	WEIGHTED SUITE	Result	Remark
1	CPU Score	Pass	4326
2	Memory Score	Pass	2919
3	Graphics Score	Pass	622
4	HDD Score	Pass	5220

5.8 PCMARK 2005

Processor: Intel Pentium M 2.26GHZ

1. Windows XP

Item	WEIGHTED SUITE	Result	Remark
1	CPU Score	Pass	
2	Memory Score	Pass	
3	Graphics Score	Pass	
4	HDD Score	Pass	