

Product Test Report



Product Name	LV-679D/LV-679D2C
Product Version	B
Issued Date	1.Feb.2008
Report Edition	1.0
BIOS Version	1.3
Testing Engineer	KEN

Index

Index	2
1. Function test	4
1.1 Hardware function	4
1.2 BIOS function	6
1.3 Driver	8
2. Compatibility test	9
2.1 CPU Test	9
2.2 Memory Test	10
2.3 VGA Graphic Quality Test	11
2.4 Audio	12
2.5 HDD Test	14
2.6 CD-ROM Test	15
2.7 USB Test	16
2.8 Serial Port Test	18
2.9 PS2 Keyboard 、 Mouse Test	19
2.10 LAN Test	20
2.11 Power Supply Test	21
2.12 Floppy Drive Test	22
2.13 Os Install	22
2.14 Print Port Test	23
3. Environmental test	24
3.1 Temperature Test	24
3.2 Thermal measurements at various points on the board	26
4. Reliability Test	27
4.1 Power Consumption Test	27
LV-679D2C	38
LV-679D2C	39
LV-679D2C	40

5. Performance Test	41
5.1 Business Win Stone 2002	41
5.2 Business Win Stone 2004	42
5.3 Content Creation Winstone 2004	43
5.4 3D MARK(2001、2003、2005)	44
5.5 3D MARK2006	46
5.6 PC MARK2002	48
5.7 PC MARK2004	50
5.8 PC MARK2005	52
5.9 PATA Performance	54
5.10 SATA Performance	55
5.11 USB Performance	57

1. Function test

1.1 Hardware function

Base Function Test

Item	Description	Result
1	Power Button	Pass
2	Reset	Pass
3	Power LED	Pass
4	HDD LED	Pass
5	SATA1	Pass
6	SATA2	Pass
7	SATA3	Pass
8	USB1	Pass
9	USB2	Pass
10	USB3	Pass
11	USB4	Pass
12	DDRII A1	Pass
13	DDRII A2	Pass
14	Floppy	Pass
15	LPT	Pass
16	COM1	Pass
17	COM2	Pass
18	VGA Port	Pass
19	PS2	Pass
20	AUDIO	Pass
21	CD_IN	Pass
22	SPDIF	Pass
23	Mini PCI 1	Pass
24	Mini PCI 2	Pass

25	DIO	Pass
26	CPUFAN	Pass
27	NBFAN	Pass
28	SYSFAN	Pass
29	PCI	Pass
30	IDE	Pass
31	1394	Pass
32	DVI	Pass
33	LVDS	Pass
34	LAN	Pass
35	IrDA	Pass
36	HDTV	Pass

Jumper

Item	Description	Result
1	JRTC	Pass
2	JCSEL1	Pass
3	JCSEL2	Pass

1.2 BIOS function

Item	Description	Result	Remark
1	Press 'Del' to run Setup Utility	Pass	
2	Ctrl-Alt-Del – Soft-Reboot	Pass	
3	Save & Exit Setup	Pass	
4	Date & Time Setting	Pass	
5	Drive A	Pass	
6	Quick Power On Self Test	Pass	
7	Boot Device Setting	Pass	
8	Boot Up Floppy Seek	Pass	
9	Boot Up Num Lock Status	Pass	
10	ACPI Suspend Type	Pass	
11	Halt On	Pass	
12	Onboard Serial Port	Pass	
13	USB Controller	Pass	
14	USB Keyboard Support	Pass	
15	Onboard FDC Controller	Pass	
16	Soft-Off by PWRBTN	Pass	
17	Power On Function	Pass	
18	ACPI Function	Pass	
19	Hot Key Password	Pass	
20	Wake-up by PCI card	Pass	
21	Resume by Alarm	Pass	
22	Watch Dog Timer Select	Pass	
23	Init Display First	Pass	
24	Onboard Parallel Port	Pass	
25	PWRON After PWR-Fail	Pass	

26	Power On by Ring	Pass	
27	Set Supervisor Password	Pass	
28	Set User Password	Pass	
29	UART Mode Select	Pass	
30	RxD , Txd Active	Pass	
31	IR Transmission Delay	Pass	
32	UR2 duplex Mode	Pass	
33	Use IR Pins	Pass	

1.3 Driver

CD Edition : IPCi 2 – 1.0

1. Windows XP SP2 Driver Test

Item	Description	Result	version
1	Chipset Driver	PASS	8.1.1.1010
2	VGA Driver	PASS	6.14.10.4764
3	Audio Driver	PASS	5.10.00.5366
4	LAN Driver	PASS	10.2

2. Windows Server 2003 Driver Test

Item	Description	Result	version
1	Chipset Driver	Pass	8.1.1.1010
2	Audio Driver	Pass	5.10.00.5366
3	LAN Driver	Pass	10.2

3. Windows Vista 32 bit Driver Test

Item	Description	Result	version
1	Chipset Driver	PASS	8.1.1.1010
2	VGA Driver	PASS	7.14.10.1244
3	Audio Driver	PASS	6.0.1.5473
4	LAN Driver	PASS	12.1

4. Windows 2000 SP4

Item	Description	Result	version
1	Chipset Driver	PASS	8.1.1.1010
2	VGA Driver	PASS	6.14.10.4764
3	Audio Driver	PASS	5.10.00.5366
4	LAN Driver	PASS	10.2

2. Compatibility test

2.1 CPU Test

Test environment:

OS Windows XP professional SP2

Test program : PC MARK 2005

Spec	CPU Speed	Family	Processor	FSB	L2 Size	Result
<u>SLA43</u>	2.40 GHz	Core2Duo	T7700	800 MHz	4 MB	PASS
<u>SLAF8</u>	2.20 GHz	Core2Duo	T7500	800 MHz	4 MB	PASS
<u>SLA4A</u>	1.80 GHz	Core2Duo	T7100	800 MHz	2 MB	PASS
<u>SLA2F</u>	1.86 GHz	Celeron	540	533 MHz	1 MB	PASS
<u>SLA2G</u>	1.73 GHz	Celeron	530	533 MHz	1 MB	PASS

2.2 Memory Test

Test environment:

OS Windows XP professional SP2

Test program : PC MARK 2005

Manufacturer	Chip	DDRII frequency	Capacity Mbytes	Memory test Source
Kingston	D6408TE BGWL	DDRII 533	1GB	PASS
A-DATA	HY5PS1 G831C	DDRII 667	2GB	PASS
Transcend	7PEIID9 HNL	DDRII 667	2GB	PASS
Transcend	7GEI2D9 HNL	DDRII 667	2GB	PASS
Kingston	HYB18T 512	DDRII 533	1GB	PASS
Kingston	HY5PS1 2821C	DDRII 533	1GB	PASS
PQI	7QE22D 9HNL	DDRII 667	2GB	PASS

2.3 VGA Graphic Quality Test

Test environment:

OS Windows XP professional SP2

Driver version : 6.14.10.4764

Resolution	Color	Result	
800*600	16 /32bit	PASS	
1024*768	16 /32bit	PASS	
1152*864	16 /32bit	PASS	
1280*600	16 /32bit	PASS	
1280*720	16 /32bit	PASS	
1280*768	16 /32bit	PASS	
1280*960	16 /32bit	PASS	
1280*1024	16 /32bit	PASS	
1400*1050	16 /32bit	PASS	
1600*900	16 /32bit	PASS	
1600*1200	16 /32bit	PASS	

2.4 Audio

Test envirement:

OS Windows XP professional SP2

Driver version : 5.10.00.5366

Item	Description	Result	
1	2 CH	PASS	
2	4 CH	PASS	
3	5.1 CH	PASS	
4	7.1 CH	PASS	
5	Microphone	PASS	
6	LINE	PASS	
7	SPDIF OUT	PASS	
8	CDIN	PASS	

OS Windows Server 2003

Driver version : 5.10.00.5366

Item	Description	Result	
1	2 CH	PASS	
2	4 CH	PASS	
3	5.1 CH	PASS	
4	7.1 CH	PASS	
5	Microphone	PASS	
6	LINE	PASS	
7	SPDIF OUT	PASS	
8	CDIN	PASS	

OS Windows 2000 SP4

Driver version : 5.10.00.5366

Item	Description	Result	
1	2 CH	PASS	
2	4 CH	PASS	
3	5.1 CH	PASS	
4	7.1 CH	PASS	
5	Microphone	PASS	
6	LINE	PASS	
7	SPDIF OUT	PASS	
8	CDIN	PASS	

OS Windows Vista 32 bit

Driver version : 6.0.1.5473

Item	Description	Result	
1	2 CH	PASS	
2	4 CH	PASS	
3	5.1 CH	PASS	
4	7.1 CH	PASS	
5	Microphone	PASS	
6	LINE	PASS	
7	SPDIF OUT	PASS	
8	CDIN	PASS	

2.5 HDD Test

Test envirimnt:

OS Windows XP professional SP2

HDD MODEL	INTERFACE	capacity	HDD Size Detect	HDD Data Transfer	HDD LED Check
Western Digital WD800JD-00LSA0	SATA	80GB	PASS	PASS	PASS
Western Digital WD800JD-75MSA3	SATA	80GB	PASS	PASS	PASS
HITACHI HDT722525 DLA380	SATA	250GB	PASS	PASS	PASS
Seagate ST3250620 AS	SATA	250GB	PASS	PASS	PASS
Western Digital WD2500JB-00REA0	PATA	250GB	PASS	PASS	PASS
Seagate ST320413A	PATA	20GB	PASS	PASS	PASS
IBM DTLA-3050 10	PATA	10.2GB	PASS	PASS	PASS

2.6 CD-ROM Test

Test envirement:

OS Windows XP professional SP2

CD-ROM MODEL	INTERFACE	CD-ROM Detect	CD-ROM Data Transfer	PLAY DVD
LG DVD GSA-H62L	SATA	PASS	PASS	PASS
PIONEER DVD PVR-212B	SATA	PASS	PASS	PASS
ASUS DVD DRW-1814BLT	SATA	PASS	PASS	PASS
BenQ 652A-6N2	PATA	PASS	PASS	PASS

2.7 USB Test

1. Windows XP SP2

Item	Result	Remark
External USB Keyboard Test	PASS	
External USB Mouse Test	PASS	
Hot plugging test	PASS	
CD ROM	PASS	
USB Mass storage	PASS	

2. Windows Server 2003

Item	Result	Remark
External USB Keyboard Test	PASS	
External USB Mouse Test	PASS	
Hot plugging test	PASS	
CD ROM	PASS	
USB Mass storage	PASS	

3. Windows 2000 SP4

Item	Result	Remark
External USB Keyboard Test	PASS	
External USB Mouse Test	PASS	
Hot plugging test	PASS	
CD ROM	PASS	
USB Mass storage	PASS	

4. Windows Vista 32 bit

Item	Result	Remark
External USB Keyboard Test	PASS	
External USB Mouse Test	PASS	
Hot plugging test	PASS	
CD ROM	PASS	
USB Mass storage	PASS	

2.8 Serial Port Test

1. MS-DOS

Item	Description	Result	Remark
1	RS-232 Mouse Test	PASS	
2	RS-422 & RS-485	PASS	
3	PC Check	PASS	
4	TS	PASS	

2. Windows Server 2003

Item	Description	Result	Remark
1	Device Manager Check	PASS	
2	RS-232 Mouse Test	PASS	
3	b&b com port test	PASS	

3. Windows XP SP2

Item	Description	Result	Remark
1	Device Manager Check	PASS	
2	RS-232 Mouse Test	PASS	
3	b&b com port test	PASS	

4. Windows Vista 32 bit

Item	Description	Result	Remark
1	Device Manager Check	PASS	
2	RS-232 Mouse Test	PASS	

2.9 PS2 Keyboard 、 Mouse Test

1. MS-DOS

Item	Description	Result	Remark
1	Keyboard LED Status Test	PASS	
2	Keyboard Typing Test	PASS	
3	Mouse Detect Test	PASS	

2. Windows XP SP2

Item	Description	Result	Remark
1	Device Manager Check	PASS	
2	Keyboard Typing Test	PASS	
3	Mouse Detect Test	PASS	

3. Windows Vista 32 bit

Item	Description	Result	Remark
1	Device Manager Check	PASS	
2	Keyboard Typing Test	PASS	
3	Mouse Detect Test	PASS	

4. Windows Server 2003

Item	Description	Result	Remark
1	Device Manager Check	PASS	
2	Keyboard Typing Test	PASS	
3	Mouse Detect Test	PASS	

5. Windows 2000 SP4

Item	Description	Result	Remark
1	Device Manager Check	PASS	
2	Keyboard Typing Test	PASS	
3	Mouse Detect Test	PASS	

2.10 LAN Test

Data Transfer Test envirement:

-CAT 6 UTP 100M

-8 HR. continuous

1. Windows XP SP2

Item	Description	Result	Remark
1	Device Manager Check	PASS	
2	Data Transfer Test	PASS	

2. Windows Server 2003

Item	Description	Result	Remark
1	Device Manager Check	PASS	
2	Data Transfer Test	PASS	

3. Windows Vista 64bit

Item	Description	Result	Remark
1	Device Manager Check	PASS	
2	Data Transfer Test	PASS	

3. Windows 2000 SP4

Item	Description	Result	Remark
1	Device Manager Check	PASS	
2	Data Transfer Test	PASS	

2.11 Power Supply Test

1. MS-DOS

Item	Description	Verification	
		Result	Remark
1	ATX Power On/Off	PASS	Seventeam ST-300WAP 300W
2	ATX Power On/Off	PASS	HEC WINDMILL PRO 315W
3	ATX Power On/Off	PASS	Seasonic SS-430-HB 430W

2. Windows XP SP2

Item	Description	Verification	
		Result	Remark
1	ATX Power On/Off	PASS	Seventeam ST-300WAP 300W
2	ATX Power On/Off	PASS	HEC WINDMILL PRO 315W
3	ATX Power On/Off	PASS	Seasonic SS-430-HB 430W

3. Windows Server 2003

Item	Description	Verification	
		Result	Remark
1	ATX Power On/Off	PASS	Seventeam ST-300WAP 300W
2	ATX Power On/Off	PASS	HEC WINDMILL PRO 315W
3	ATX Power On/Off	PASS	Seasonic SS-430-HB 430W

4. Windows Vista 32 bit

Item	Description	Verification	
		Result	Remark
1	ATX Power On/Off	PASS	Seventeam ST-300WAP 300W
2	ATX Power On/Off	PASS	HEC WINDMILL PRO 315W
3	ATX Power On/Off	PASS	Seasonic SS-430-HB 430W

2.12 Floppy Drive Test

Floppy	Floppy Drive Detect	Floppy Data Transfer
TEAC FD-05HG	PASS	PASS

2.13 Os Install

	Description	Result	Remark
1	Windows Vista 64 bit	PASS	
2	Windows Vista 32 bit	PASS	
3	Windows XP SP2	PASS	
4	Windows Server 2003	PASS	
5	Windows 2000 SP4	PASS	
6	Suse 10.1	PASS	
7	Fedora Code 3	PASS	

2.14 Print Port Test

1. MS-DOS

Item	Description	Result	Remark
1	PC Check	PASS	
2	TS	PASS	

2. Window XP SP2

Item	Description	Result	Remark
1	ECP/EPP PRINT TEST	PASS	

3. Window 2003

Item	Description	Result	Remark
1	ECP/EPP PRINT TEST	PASS	

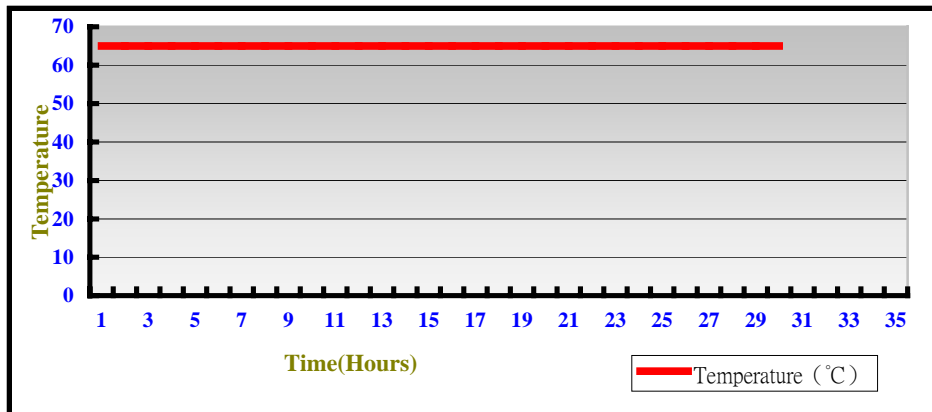
3. Environmental test

3.1 Temperature Test

Hardware Device list:

System Board	LV-679
CPU	Intel Core 2 Duo Mobile 2.4GHZ
Memory	Transcend DDRII 667 2GB (7GEI2D9HNL) Transcend DDRII 667 2GB (7PEIID9HNL)
HDD	Western Digital WD800JD-75MSA3 80GB
Operating OS	Windows XP
Test Equipment	THERMOTRON 2800 Programmer/Controller
Test Program	3DMark 2003

Test Result:



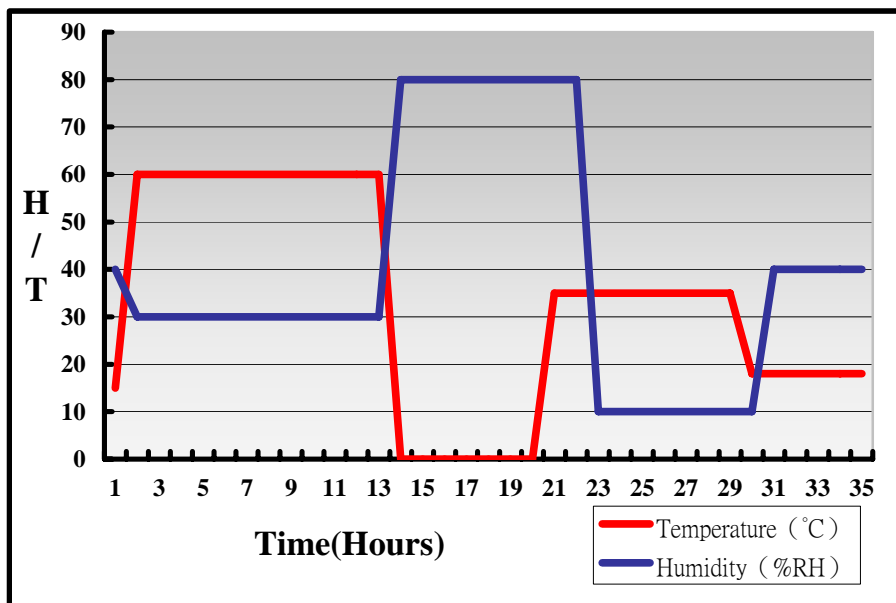
Boot Up Test:

Temperature	Result	Remark
-20°C	PASS	50 Times
70°C	PASS	50 Times

Hardware Device list:

System Board	LV-679
CPU	Intel Core 2 Duo Mobile 2.4GHZ
Memory	Transcend DDRII 667 2GB (7GEI2D9HNL) Transcend DDRII 667 2GB (7PEIID9HNL)
HDD	Western Digital WD800JD-75MSA3 80GB
Operating OS	Windows XP
Test Equipment	THERMOTRON 2800 Programmer/Controller
Test Program	3DMark 2003

Test Result:



3.2 Thermal measurements at various points on the board

Test Environment :

CPU	Intel Core 2 Duo Mobile 2.2GHZ
Memory	Transcend DDRII 667 2GB (7GEI2D9HNL) Transcend DDRII 667 2GB (7PEIID9HNL)
HDD	Western Digital WD800JD-75MSA3 80GB
Power	Seventeam ST-300WAP
Operating System	Windows XP
Test Program	3D WinMark2003

Test Result:

CPU	58.4°C
GME965 (Northbridge)	48.7°C
ICH8-M (Southbridge)	58.1°C
U3	57.9°C
LPCIO	39.7°C
U4	54.4°C
U9	50.1°C
U15	44.6°C
U8	63.3°C

4. Reliability Test

4.1 Power Consumption Test

1. Test Environment:

CPU	Intel Core 2 Duo Mobile 2.4GHZ
Memory	PQI DDRII 667 (QE22D9HNL) 2GB PQI DDRII 667 (QE22D9HNL) 2GB
HDD	Western Digital WD800JD-75MSA3 80GB
Test OS	Windows XP
Test Program	3DMARK 2003

(A) Power Supply: Seventeam ST-300WAP

Test Result

Voltage	Current (A)	Power (W)	Remark
12V	3.06	36.72	
5V	5.18	25.9	
3.3V	1.68	5.544	
5VSB	0.01	0.05	

(B) DC Power Supply: GWINSTEK SPS-3610

Test Result

Voltage	Current (A)	Power (W)	Remark
9V	8.49	76.41	
12V	6.33	76.56	
19V	4.1	77.9	
24V	3.12	74.88	

2. Test Environment:

CPU	Intel Core 2 Duo Mobile 2.4GHZ
Memory	Transcend DDRII 667 (7GEIID9HNL) 2GB
HDD	Western Digital WD800JD-75MSA3 80GB
17" PANEL	AUO M170EG01
Test OS	Windows XP
Test Program	3DMARK 2003

(A) Power Supply:Seventeam ST-300WAP

Test Result

Voltage	Current (A)	Power (W)	Remark
12V	4.87	58.44	
5V	5.38	26.9	
3.3V	1.65	5.445	
5VSB	0.01	0.05	

(B)DC Power Supply:GWINSTEK SPS-3610

Test Result

Voltage	Current (A)	Power (W)	Remark
12V	8.56	102.72	
19V	5.39	102.41	
24V	4.23	101.52	

3.Test Environment:

CPU	Intel Core 2 Duo Mobile 2.4GHZ
Memory	PQI DDRII 667 (QE22D9HNL) 2GB PQI DDRII 667 (QE22D9HNL) 2GB
HDD	Western Digital WD800JD-75MSA3 80GB
17" PANEL	AUO M170EG01
Test OS	Windows XP
Test Program	3DMARK 2003

(A) Power Supply:Seventeam ST-300WAP

Test Result

Voltage	Current (A)	Power (W)	Remark
12V	5.04	60.48	
5V	6.22	31.1	
3.3V	1.63	5.379	
5VSB	0.01	0.05	

(B)DC Power Supply:GWINSTEK SPS-3610

Test Result

Voltage	Current (A)	Power (W)	Remark
12V	8.72	104.64	
19V	5.62	106.78	
24V	4.59	110.16	

4. Test Environment:

CPU	Intel Core 2 Duo Mobile 2.2GHZ
Memory	Kingston DDRII 533 1GB (HYB18T512)
HDD	Western Digital WD800JD-75MSA3 80GB
Test OS	Windows XP
Test Program	3DMARK 2003

(A) Power Supply:Sevteam ST-300WAP

Test Result

Voltage	Current (A)	Power (W)	Remark
12V	2.54	30.48	
5V	4.18	20.9	
3.3V	1.63	5.379	
5VSB	0	0	

(B)DC Power Supply:GWINSTEK SPS-3610

Test Result

Voltage	Current (A)	Power (W)	Remark
9V	7.18	64.62	
12V	5.53	66.36	
19V	3.31	62.89	
24V	2.59	62.16	

5. Test Environment:

CPU	Intel Celeron 1.73 GHZ
Memory	Kingston DDRII 533 1GB (HYB18T512)
HDD	Western Digital WD800JD-75MSA3 80GB
Test OS	Windows XP
Test Program	3DMARK 2003

(A) Power Supply:Sevteam ST-300WAP

Test Result

Voltage	Current (A)	Power (W)	Remark
12V	1.74	20.88	
5V	4.33	21.65	
3.3V	1.53	5.049	
5VSB	0	0	

(B)DC Power Supply:GWINSTEK SPS-3610

Test Result

Voltage	Current (A)	Power (W)	Remark
9V	5.89	53.01	
12V	5.03	60.36	
19V	2.72	51.68	
24V	2.19	52.56	

6. Test Environment:

CPU	Intel Core 2 Duo Mobile 2.2GHZ
Memory	Transcend DDRII 667 (7GEIID9HNL) 2GB Transcend DDRII 667 (7GEI2D9HNL) 2GB
HDD	Western Digital WD800JD-75MSA3 80GB
17" PANEL	AUO M170EG01
Test OS	Windows XP
Test Program	3DMARK 2003

(A) Power Supply:Sevteam ST-300WAP

Test Result

Voltage	Current (A)	Power (W)	Remark
12V	4.67	56.04	
5V	6.21	31.05	
3.3V	1.63	5.379	
5VSB	0	0	

(B)DC Power Supply:GWINSTEK SPS-3610

Test Result

Voltage	Current (A)	Power (W)	Remark
12V	8.51	102.12	
19V	5.42	102.98	
24V	4.29	102.96	

7. Test Environment:

CPU	Intel Celeron 1.73 GHZ
Memory	Kingston DDRII 533 1GB (HYB18T512)
HDD	Western Digital WD800JD-75MSA3 80GB
17" PANEL	AUO M170EG01
Test OS	Windows XP
Test Program	3DMARK 2003

(A) Power Supply:Seventeam ST-300WAP

Test Result

Voltage	Current (A)	Power (W)	Remark
12V	4.54	54.48	
5V	5.2	26	
3.3V	1.64	5.412	
5VSB	0	0	

(B)DC Power Supply:GWINSTEK SPS-3610

Test Result

Voltage	Current (A)	Power (W)	Remark
12V	8.67	104.04	
19V	5.05	95.95	
24V	4.1	96.24	

8. Test Environment:

CPU	Intel Celeron 1.86 GHZ
Memory	Kingston DDRII 533 1GB (HYB18T512) Kingston DDRII 533 1GB (HY5PS12821C)
HDD	Western Digital WD800JD-75MSA3 80GB
Test OS	Windows XP
Test Program	3DMARK 2003

(A) Power Supply:Seventeam ST-300WAP

Test Result

Voltage	Current (A)	Power (W)	Remark
12V	1.76	21.12	
5V	4.84	22.4	
3.3V	1.63	5.379	
5VSB	0	0	

(B)DC Power Supply:GWINSTEK SPS-3610

Test Result

Voltage	Current (A)	Power (W)	Remark
9V	7.06	63.54	
12V	4.86	58.32	
19V	3.06	58.14	
24V	2.47	59.28	

9. Test Environment:

CPU	Intel Celeron 1.86 GHZ
Memory	Kingston DDRII 533 1GB (HYB18T512) Kingston DDRII 533 1GB (HY5PS12821C)
HDD	Western Digital WD800JD-75MSA3 80GB
17" PANEL	AUO M170EG01
Test OS	Windows XP
Test Program	3DMARK 2003

(A) Power Supply:Sevteam ST-300WAP

Test Result

Voltage	Current (A)	Power (W)	Remark
12V	3.74	44.88	
5V	5.92	29.6	
3.3V	1.66	5.479	
5VSB	0	0	

(B)DC Power Supply:GWINSTEK SPS-3610

Test Result

Voltage	Current (A)	Power (W)	Remark
12V	7.54	90.48	
19V	4.8	91.2	
24V	3.82	91.68	

10. Test Environment:

CPU	Intel Celeron 1.86 GHZ
Memory	Kingston DDRII 533 1GB (HYB18T512)
HDD	Western Digital WD800JD-75MSA3 80GB
17" PANEL	AUO M170EG01
Test OS	Windows XP
Test Program	3DMARK 2003

(A) Power Supply:Seventeam ST-300WAP

Test Result

Voltage	Current (A)	Power (W)	Remark
12V	3.72	44.64	
5V	5.12	25.6	
3.3V	1.61	5.313	
5VSB	0	0	

(B)DC Power Supply:GWINSTEK SPS-3610

Test Result

Voltage	Current (A)	Power (W)	Remark
12V	7.08	84.96	
19V	4.52	85.88	
24V	3.53	84.72	

11. Test Environment:

CPU	Intel Celeron 1.86 GHZ
Memory	Kingston DDRII 533 1GB (HYB18T512) Kingston DDRII 533 1GB (HY5PS12821C)
HDD	Western Digital WD800JD-75MSA3 80GB
Test OS	Windows XP

(A) Power Supply:Seventeam ST-300WAP

Test Result

Voltage	Current (A)	Power (W)	Remark
12V	2.9	34.8	Boot Up
5V	3.33	16.65	Boot Up
3.3V	1.67	5.511	Boot Up
5VSB	0.01	0.05	Boot Up

(B)DC Power Supply:GWINSTEK SPS-3610

Test Result

Voltage	Current (A)	Power (W)	Remark
9V	4.49	40.41	Boot Up
12V	3.38	40.56	Boot Up
19V	2.08	39.52	Boot Up
24V	1.68	40.32	Boot Up

12. Test Environment:

Motherboard	LV-679D2C
CPU	Intel Core 2 Duo Mobile 2.4GHZ
Memory	PQI DDRII 667 (QE22D9HNL) 2GB PQI DDRII 667 (QE22D9HNL) 2GB
HDD	Western Digital WD800JD-75MSA3 80GB

(A) Power Supply:Sevteam ST-300WAP

Test Result

Voltage	Current (A)	Power (W)	Remark
12V	3.53	42.36	Boot Up
5V	3.73	18.65	Boot Up
3.3V	1.67	5.511	Boot Up
5VSB	0.01	0.05	Boot Up

(B)DC Power Supply:GWINSTEK SPS-3610

Test Result

Voltage	Current (A)	Power (W)	Remark
9V	8.3	74.7	Boot Up
12V	6.08	72.96	Boot Up
19V	3.48	66.10	Boot Up
24V	2.95	70.8	Boot Up

13. Test Environment:

Motherboard	LV-679D2C
CPU	Intel Core 2 Duo Mobile 2.2GHZ
Memory	Transcend DDRII 667 (7GEIID9HNL) 2GB Transcend DDRII 667 (7GEI2D9HNL) 2GB
HDD	Western Digital WD800JD-75MSA3 80GB

(A) Power Supply:Seventeam ST-300WAP

Test Result

Voltage	Current (A)	Power (W)	Remark
12V	2.24	26.88	Boot Up
5V	3.78	18.9	Boot Up
3.3V	1.71	5.643	Boot Up
5VSB	0	0	Boot Up

(B)DC Power Supply:GWINSTEK SPS-3610

Test Result

Voltage	Current (A)	Power (W)	Remark
9V	6.59	59.31	Boot Up
12V	4.91	58.92	Boot Up
19V	3.01	57.19	Boot Up
24V	2.41	57.84	Boot Up

14. Test Environment:

Motherboard	LV-679D2C
CPU	Intel Celeron 1.73 GHZ
Memory	Kingston DDRII 533 1GB (HYB18T512)
HDD	Western Digital WD800JD-75MSA3 80GB

(A) Power Supply:Seventeam ST-300WAP

Test Result

Voltage	Current (A)	Power (W)	Remark
12V	1.39	16.68	Boot Up
5V	3.16	15.8	Boot Up
3.3V	2.68	8.844	Boot Up
5VSB	0	0	Boot Up

(B)DC Power Supply:GWINSTEK SPS-3610

Test Result

Voltage	Current (A)	Power (W)	Remark
9V	6.19	55.71	Boot Up
12V	3.66	43.92	Boot Up
19V	2.26	42.94	Boot Up
24V	1.82	43.68	Boot Up

5. Performance Test

5.1 Business Win Stone 2002

Windows XP SP2

WEIGHTED SUITE	Test Environment	Result	Remark
Business Win stone2002	Intel Core 2 Duo Mobile 2.2GHZ	Pass	41.2
	Transcend DDRII 667 2GB (7PEIID9HNL)		41.3
	Western Digital WD800JD-75MSA3 80GB		40.6
			40.1
Business Win stone2002	Intel Celeron 1.86GHZ	Pass	36.2
	Kingston DDRII 533 1GB (HYB18T512)		36.1
	Western Digital WD800JD-75MSA3 80GB		35.6
			35.9

5.2 Business Win Stone 2004

Windows XP SP2

WEIGHTED SUITE	Test Environment	Result	Remark
Business Win stone2004	Intel Core 2 Duo Mobile 2.2GHZ	Pass	18.6
	Transcend DDRII 667 2GB (7PEIID9HNL)		19.4
	Western Digital WD800JD-75MSA3 80GB		16.1
			17
Business Win stone2004	Intel Celeron 1.86GHZ	Pass	19.5
	Kingston DDRII 533 1GB (HYB18T512)		18.8
	Western Digital		14.9
	WD800JD-75MSA3 80GB		18.3

5.3 Content Creation Winstone 2004

Windows XP XP2

WEIGHTED SUITE	Test Environment	Result	Remark
Content Creation Winstone 2004	Intel Celeron 1.86GHZ Kingston DDRII 533 1GB (HYB18T512) Western Digital WD800JD-75MSA3 80GB	Pass	30.6 31 31.1 31 30.8

5.4 3D MARK(2001、2003、2005)

Windows XP SP2

WEIGHTED SUITE	Test Environment	Result	Remark
3DMARK2001 Scores	Intel Core 2 Duo Mobile 2.2GHZ Transcend DDRII 667 2GB	Pass	6033
3DMARK2003 Scores	(7GEI2D9HNL) Transcend DDRII 667 2GB (7PEIID9HNL)	Pass	1637
3DMARK2005 Scores	Western Digital WD800JD-75MSA3 80GB	Pass	717

Windows XP SP2

WEIGHTED SUITE	Test Environment	Result	Remark
3DMARK2001 Scores	Intel Celeron 1.86GHZ Kingston DDRII 533 1GB	Pass	3055
3DMARK2003 Scores	(HYB18T512) Western Digital WD800JD-75MSA3 80GB	Pass	882
3DMARK2005 Scores		Pass	464

Windows XP SP2

WEIGHTED SUITE	Test Environment	Result	Remark
3DMARK2001 Scores	Intel Core 2 Duo Mobile 1.8 GHZ PQI DDRII 667 (QE22D9HNL) 2GB PQI DDRII 667 (QE22D9HNL) 2GB Western Digital WD800JD-75MSA3 80GB	Pass	5504
3DMARK2003 Scores		Pass	1525
3DMARK2005 Scores		Pass	664

Windows XP SP2

WEIGHTED SUITE	Test Environment	Result	Remark
3DMARK2001 Scores	Intel Celeron 1.73GHZ PQI DDRII 667 (QE22D9HNL) 2GB PQI DDRII 667 (QE22D9HNL) 2GB Western Digital WD800JD-75MSA3 80GB	Pass	4710
3DMARK2003 Scores		Pass	1214
3DMARK2005 Scores		Pass	514

5.5 3D MARK2006

Windows XP SP2

Item	WEIGHTED SUITE	Test Environment	Result	Remark
1	3DMARK Source	Intel Core 2 Duo Mobile 2.2GHZ	Pass	330
2	SM2.0 Source	A-DATA DDRII 667 2GB (HY5PS1G831C)	Pass	114
3	HDR/SM3.0 Source	Transcend DDRII 667 2GB (7PEIID9HNL)	Pass	114
4	CPU Source	Western Digital WD800JD-75MSA3 80GB	Pass	1786

Windows XP SP2

Item	WEIGHTED SUITE	Test Environment	Result	Remark
1	3DMARK Source	Intel Celeron 1.86GHZ	Pass	191
2	SM2.0 Source	Kingston DDRII 533 1GB (HYB18T512)	Pass	65
3	HDR/SM3.0 Source	Western Digital WD800JD-75MSA3 80GB	Pass	67
4	CPU Source		Pass	815

Windows XP SP2

Item	WEIGHTED SUITE	Test Environment	Result	Remark
1	3DMARK Source	Intel Core 2 Duo Mobile 1.8 GHZ PQI DDRII 667 (QE22D9HNL) 2GB PQI DDRII 667 (QE22D9HNL) 2GB Western Digital WD800JD-75MSA3 80GB	Pass	308
2	SM2.0 Source		Pass	105
3	HDR/SM3.0 Source		Pass	107
4	CPU Source		Pass	1534

Windows XP SP2

Item	WEIGHTED SUITE	Test Environment	Result	Remark
1	3DMARK Source	Intel Celeron 1.73GHZ PQI DDRII 667 (QE22D9HNL) 2GB PQI DDRII 667 (QE22D9HNL) 2GB Western Digital WD800JD-75MSA3 80GB	Pass	260
2	SM2.0 Source		Pass	91
3	HDR/SM3.0 Source		Pass	90
4	CPU Source		Pass	631

5.6 PC MARK2002

Test Environment
Intel Core 2 Duo Mobile 2.2GHZ A-DATA DDRII 667 2GB (HY5PS1G831C) Transcend DDRII 667 2GB (7PEIID9HNL) Western Digital WD800JD-75MSA3 80GB

Windows XP SP2

Item	WEIGHTED SUITE	Result	Remark
1	CPU test Source	Pass	8607
2	Memory test Source	Pass	27597
3	HDD test Source	Pass	1678

Test Environment
Intel Celeron 1.86GHZ Kingston DDRII 533 1GB (HYB18T512) Western Digital WD800JD-75MSA3 80GB

Windows XP SP2

Item	WEIGHTED SUITE	Result	Remark
1	CPU test Source	Pass	7257
2	Memory test Source	Pass	7812
3	HDD test Source	Pass	1782

Test Environment
Intel Core 2 Duo Mobile 1.8 GHZ PQI DDRII 667 (QE22D9HNL) 2GB PQI DDRII 667 (QE22D9HNL) 2GB Western Digital WD800JD-75MSA3 80GB

Windows XP SP2

Item	WEIGHTED SUITE	Result	Remark
1	CPU test Source	Pass	7114
2	Memory test Source	Pass	14521
3	HDD test Source	Pass	1636

Test Environment
Intel Celeron 1.73GHZ PQI DDRII 667 (QE22D9HNL) 2GB PQI DDRII 667 (QE22D9HNL) 2GB Western Digital WD800JD-75MSA3 80GB

Windows XP SP2

Item	WEIGHTED SUITE	Result	Remark
1	CPU test Source	Pass	6552
2	Memory test Source	Pass	7915
3	HDD test Source	Pass	1643

5.7 PC MARK2004

Test Environment
Intel Core 2 Duo Mobile 2.2GHZ A-DATA DDRII 667 2GB (HY5PS1G831C) Transcend DDRII 667 2GB (7PEIID9HNL) Western Digital WD800JD-75MSA3 80GB

Windows XP PS2

Item	WEIGHTED SUITE	Result	Remark
1	PCMark Source	Pass	6678
2	CPU test Source	Pass	N/A
3	Memory test Source	Pass	7170
4	Graphic test Source	Pass	1300
5	HDD test Source	Pass	N/A

Test Environment
Intel Celeron 1.86GHZ Kingston DDRII 533 1GB (HYB18T512) Western Digital WD800JD-75MSA3 80GB

Windows XP PS2

Item	WEIGHTED SUITE	Result	Remark
1	PCMark Source	Pass	3661
2	CPU test Source	Pass	4120
3	Memory test Source	Pass	3955
4	Graphic test Source	Pass	1026
5	HDD test Source	Pass	5097

Test Environment

Intel Core 2 Duo Mobile 1.8 GHZ

PQI DDRII 667 (QE22D9HNL) 2GB

PQI DDRII 667 (QE22D9HNL) 2GB

Western Digital WD800JD-75MSA3 80GB

Windows XP PS2

Item	WEIGHTED SUITE	Result	Remark
1	PCMark Source	Pass	5572
2	CPU test Source	Pass	6107
3	Memory test Source	Pass	50024
4	Graphic test Source	Pass	1254
5	HDD test Source	Pass	4949

Test Environment

Intel Celeron 1.73GHZ

PQI DDRII 667 (QE22D9HNL) 2GB

PQI DDRII 667 (QE22D9HNL) 2GB

Western Digital WD800JD-75MSA3 80GB

Windows XP PS2

Item	WEIGHTED SUITE	Result	Remark
1	PCMark Source	Pass	3227
2	CPU test Source	Pass	2967
3	Memory test Source	Pass	3629
4	Graphic test Source	Pass	1125
5	HDD test Source	Pass	N/A

5.8 PC MARK2005

Test Environment
Intel Core 2 Duo Mobile 2.2GHZ A-DATA DDRII 667 2GB (HY5PS1G831C) Transcend DDRII 667 2GB (7PEIID9HNL) Western Digital WD800JD-75MSA3 80GB

Windows XP SP2

Item	WEIGHTED SUITE	Result	Remark
1	System test Source	Pass	3952
2	CPU test Source	Pass	5600
3	Memory test Source	Pass	4398
4	Graphic test Source	Pass	1412
5	HDD test Source	Pass	5100

Test Environment
Intel Celeron 1.86GHZ Kingston DDRII 533 1GB (HYB18T512) Western Digital WD800JD-75MSA3 80GB

Windows XP SP2

Item	WEIGHTED SUITE	Result	Remark
1	System test Source	Pass	2475
2	CPU test Source	Pass	3406
3	Memory test Source	Pass	3495
4	Graphic test Source	Pass	955
5	HDD test Source	Pass	5776

Test Environment

Intel Core 2 Duo Mobile 1.8 GHZ
PQI DDRII 667 (QE22D9HNL) 2GB
PQI DDRII 667 (QE22D9HNL) 2GB
Western Digital WD800JD-75MSA3 80GB

Windows XP SP2

Item	WEIGHTED SUITE	Result	Remark
1	System test Source	Pass	3685
2	CPU test Source	Pass	4626
3	Memory test Source	Pass	3892
4	Graphic test Source	Pass	1269
5	HDD test Source	Pass	5614

Test Environment

Intel Celeron 1.73GHZ
PQI DDRII 667 (QE22D9HNL) 2GB
PQI DDRII 667 (QE22D9HNL) 2GB
Western Digital WD800JD-75MSA3 80GB

Windows XP SP2

Item	WEIGHTED SUITE	Result	Remark
1	System test Source	Pass	2233
2	CPU test Source	Pass	2521
3	Memory test Source	Pass	3355
4	Graphic test Source	Pass	1064
5	HDD test Source	Pass	5083

5.9 PATA Performance

5.9.1 PATA HDD

Test environment:

OS Windows XP professional SP2

Program (HD Tune)

HDD MODEL	INTERFACE	capacity	Average	Burst Rate	Access time
Western Digital WD2500JB-00REA0	PATA	250GB	28.6MB/sec	28.7 MB/sec	13.3ms

5.9.2 PATA CD-ROM

Test environment:

OS Windows XP professional SP2

Program (NERO)

CD-ROM MODEL	INTERFACE	Average speed	Fill READ	Burst Rate	CD
BenQ 652A-6N2	PATA	16.01 x	158ms	2MB/s	52 X CD-R

5.10 SATA Performance

5.10.1 SATA HDD

Test envirement:

OS Windows XP professional SP2

Program (HDTune)

HDD MODEL	INTERFACE	capacity	Average	Burst Rate	Access time
Seagate ST3250620 AS	SATA	250GB	59.7MB/sec	76.4 MB/sec	13.2ms
Western Digital WD800JD- 00LSA0		80GB	47.5MB/sec	102.6 MB/sec	13.6ms
Seagate ST3250620 AS		250GB	59.3MB/sec	101.2 MB/sec	13.2ms

5.10.2 SATA CD-ROM

Test envirement:

OS Windows XP professional SP2

Program (NERO)

CD-ROM MODEL	INTERFACE	Average speed	Fill READ	Burst Rate	CD
PIONEER DVD DVR-212BK	SATA	35.44 x	193ms	37MB/s	52 X CD-R
LG DVD GSA-H62L		35.22 x	193ms	38MB/s	52X CD-R
ASUS DVD DRW-1814BLT		36.92 x	188ms	44MB/s	52X CD-R

5.11 USB Performance

5.11.1 USB HDD

Test environment:

OS Windows XP professional SP2

Program (HD Tune)

HDD MODEL	INTERFACE	capacity	Average	Burst Rate	Access time
HITACHI IC25N020A TMR04-0	USB	20GB	22.3MB/sec	19.5 MB/sec	18.7ms
HITACHI IC25N040A TCS05-0		40GB	19.9MB/sec	25.0 MB/sec	18.7ms

5.11.2 UBS CD-ROM

Test environment:

OS Windows XP professional SP2

Program (NERO)

CD-ROM MODEL	INTERFACE	Average speed	Fill READ	Burst Rate	CD
LITEON DVD SOSC-2485KX	USB	15.53 x	128ms	22MB/s	52X CD-R
LITEON DVD SOSW-833XS		15.49 x	141ms	21MB/s	52X CD-R