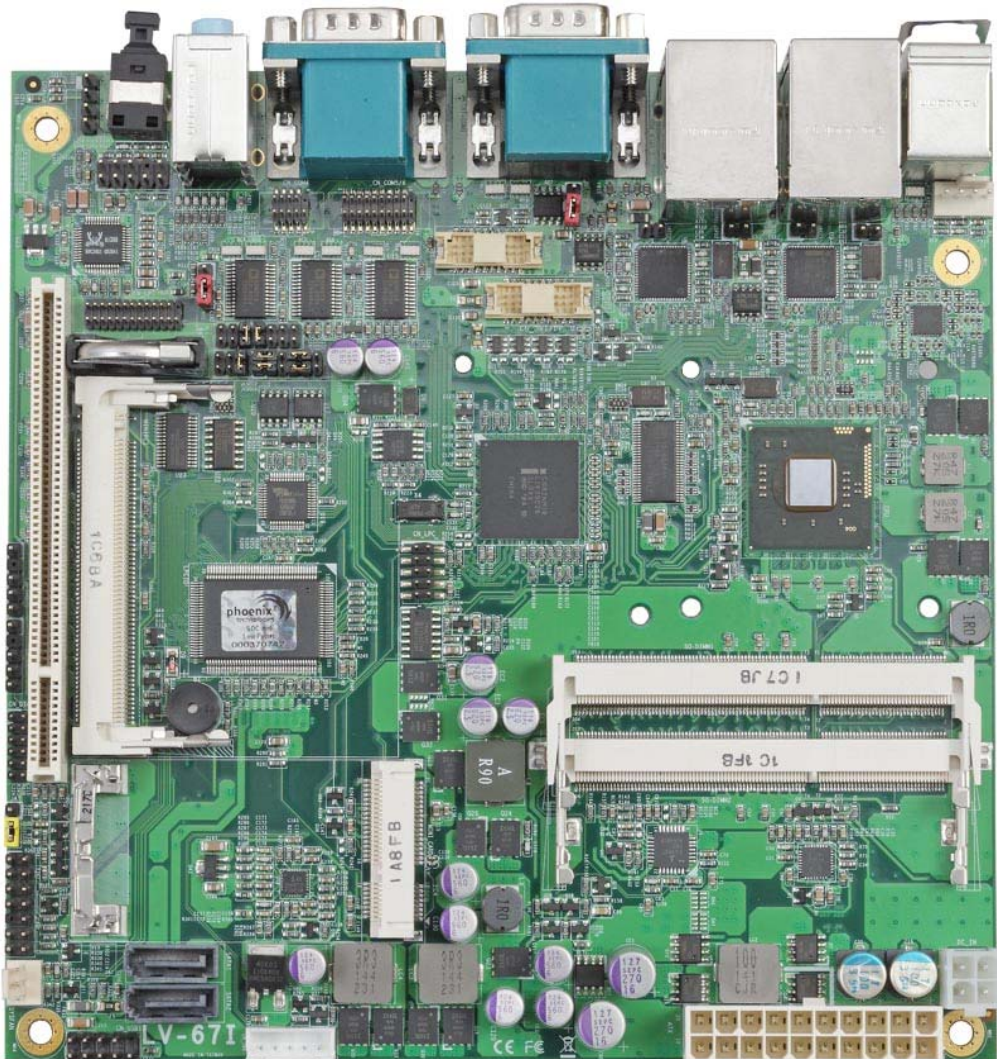


Product Test Report



Product Name	LV-67I
Product Version	A
Issued Date	2013.05.07
Report Edition	1.1
BIOS Version	1.0
Testing Engineer	Perry
Check Engineer	Perry

Index

1. Function test	4
1.1 Hardware function	4
1.2 BIOS function	6
1.3 Driver	7
2. Compatibility test	8
2.1 CPU Test.....	8
2.2 Operation System Test.....	8
2.3 Memory Test	9
2.4 VGA Graphic Quality Test	10
2.5 Audio	11
2.6 HDD Test	14
2.7 CD-ROM Test	15
2.8 USB device Test	16
2.9 Serial Port Test	19
2.10 PS2 Keyboard 、 Mouse Test	22
2.11 LAN Test	25
2.12 Power Supply Test.....	27
2.13 PCI Express mini card.....	27
3. Environmental test	28
3.1 Temperature Test.....	28
3.2 Thermal measurements at various points on the board.....	31
4. Reliability Test	35
4.1 Power Consumption Test.....	35
5. Performance Test	41
5.1 AQUAMARK3	41
5.2 ZD CPUMARK	41

5.3 3D MARK(2001、2003、2005)..... 42
5.4 3D MARK2006..... 42
5.5 PC MARK2002..... 43
5.6 PC MARK2004..... 43
5.7 PC MARK2005..... 44
5.8 Storage Performance 45

1. Function test

1.1 Hardware function

Base Function Test

Item	Description	Result
1	Power Button	PASS
2	Reset	PASS
3	Power LED	PASS
4	HDD LED	PASS
5	VGA	PASS
6	PS2	PASS
7	SATA 1 / 2	PASS
8	DDR3 1 / 2	PASS
9	LAN 1 / 2	PASS
10	USB 1 / 2 / 3 / 4 / 5 / 6	PASS
11	COM port 1 / 2 / 3 / 4 / 5 / 6	PASS
12	CPU Fan	PASS
13	System Fan	PASS
14	CN_LVDS	PASS
15	CN_DVI	PASS
16	AUDIO	PASS
17	CN_AUDIO	PASS
18	PCI	PASS
19	MINI PCI	PASS
20	PCIE Mini Card	PASS
21	CN_INV	PASS
22	CN_IR	PASS

23	CN_LPT	PASS
24	CN_DIO	PASS
25	CN_LPC	PASS
26	CDIN	PASS

Jumper

Item	Description	Result
1	JRTC	PASS
2	JAT	PASS

1.2 BIOS function

Item	Description	Result	Remark
1	Press 'Del' to run Setup Utility	PASS	
2	Ctrl-Alt-Del – Soft-Reboot	PASS	
3	Save & Exit Setup	PASS	
4	Date & Time Setting	PASS	
5	NumLock	PASS	
6	Select Language	PASS	
7	Quick Boot	PASS	
8	Console Redirection	PASS	
9	Active Processor Cores	PASS	
10	Interface Combination	PASS	
11	IGD-Boot Type(No include MPX-SDVOD/SDVOX)	PASS	
12	IGD-LCD Panel type	PASS	
13	USB Per-Port Disabled Control	PASS	
14	SB Azalia Config	PASS	
15	LAN OPROM Selection	PASS	
16	Wake on PCH LAN	PASS	
17	Serial Port	PASS	
18	Paraller Port	PASS	
19	Watch Dog Timer Select	PASS	
20	Power Control	PASS	
21	Power On By RTC Alarm	PASS	
22	Set Supervisor Password	PASS	
23	Set User Password	PASS	

1.3 Driver

CD Edition : IPCi4-1.0

1. Windows 7 32 bit Driver Test

Item	Description	Result	version
1	Chipset Driver	PASS	9.3.0.1019
2	VGA Driver	PASS	8.14.8.1065
3	Audio Driver	PASS	6.0.1.6083
4	LAN Driver	PASS	11.14.48.0

Notice:

LV-671 only support Windows 7 32-bit.

Intel does not release the VGA driver for Windows XP, Vista, Windows Server 2000/ 2003/ 2008.

2. Compatibility test

2.1 CPU Test

Test environment:

OS Windows 7 32bit

Test program : PC MARK 2005

Spec Code	CPU Speed	Family	Processor	DMI	Smart Cache	Result
SR0D9	2.13 GHz	Atom	D2700	2.5 GT/s	1 MB	PASS
SR0DA	1.86 GHz	Atom	N2800	2.5 GT/s	1 MB	PASS
SR0QB	1.86 GHz	Atom	D2550	2.5 GT/s	1 MB	PASS

2.2 Operation System Test

Item	Description	Result	Remark
1	Windows 7 64-bit	PASS	
2	Windows 7 32-bit	PASS	
3	Windows Server 2008 64-bit	PASS	
4	Windows Server 2008 32-bit	PASS	
5	Windows Vista 64-bit	PASS	
6	Windows Vista 32-bit	PASS	
7	Windows XP SP2 64-bit	PASS	
8	Windows XP SP2 32-bit	PASS	
9	Windows Server 2003 32-bit	PASS	
10	Ubuntu	PASS	

2.3 Memory Test

Test environment:

OS Windows 7 32 bit

Test program : PC MARK 2005

Manufacturer	Chip	Frequency	Capacity Mbytes	Result
Transcend	K4B1G0846D	DDR3 1066	1 GB	PASS
ADATA	K4B1G0846D	DDR3 1066	1 GB	PASS
Transcend	K4B1G0846D	DDR3 1066	2 GB	PASS
Kingston	D2568JENC PGD9U	DDR3 1333	4 GB	PASS
ADATA	J2108BCSE-GN-F	DDR3 1600	4 GB	PASS

2.4 VGA Graphic Quality Test

Test environment:

OS Windows 7 32bit

Driver version : 8.14.8.1065

Resolution	Color	Result	Remark
800*600	16 / 32bit	PASS	
1024*768	16 / 32bit	PASS	
1152*864	16 / 32bit	PASS	
1280*600	16 / 32bit	PASS	
1280*720	16 / 32bit	PASS	
1280*768	16 / 32bit	PASS	
1280*800	16 / 32bit	PASS	
1280*960	16 / 32bit	PASS	
1280*1024	16 / 32bit	PASS	
1360*768	16 / 32bit	PASS	
1366*768	16 / 32bit	PASS	
1400*1050	16 / 32bit	PASS	
1440*900	16 / 32bit	PASS	
1600*900	16 / 32bit	PASS	
1680*1050	16 / 32bit	PASS	
1920*1080	16 / 32bit	PASS	

2.5 Audio

Test environment:

OS Windows XP 32 bit

Driver version : 5.10.0.6083

Item	Description	Result	Remark
1	2CH	PASS	
2	Microphone	PASS	
3	LINE-IN	PASS	
4	CDIN	PASS	
5	SPDIF	PASS	

OS Windows XP 64 bit

Driver version : 5.10.0.6083

Item	Description	Result	Remark
1	2CH	PASS	
2	Microphone	PASS	
3	LINE-IN	PASS	
4	CDIN	PASS	
5	SPDIF	PASS	

OS Windows SERVER 2003

Driver version : 5.10.0.6083

Item	Description	Result	Remark
1	2CH	PASS	
2	Microphone	PASS	
3	LINE-IN	PASS	
4	CDIN	PASS	
5	SPDIF	PASS	

OS Windows Vista 32 bit

Driver version : 6.0.1.6083

Item	Description	Result	Remark
1	2CH	PASS	
2	Microphone	PASS	
3	LINE-IN	PASS	
4	CDIN	PASS	
5	SPDIF	PASS	

OS Windows Vista 64 bit

Driver version : 6.0.1.6083

Item	Description	Result	Remark
1	2CH	PASS	
2	Microphone	PASS	
3	LINE-IN	PASS	
4	CDIN	PASS	
5	SPDIF	PASS	

OS Windows 7 32 bit

Driver version : 6.0.1.6083

Item	Description	Result	Remark
1	2CH	PASS	
2	Microphone	PASS	
3	LINE-IN	PASS	
4	CDIN	PASS	
5	SPDIF	PASS	

OS Windows 7 64 bit

Driver version : 6.0.1.6083

Item	Description	Result	Remark
1	2CH	PASS	
2	Microphone	PASS	
3	LINE-IN	PASS	
4	CDIN	PASS	
5	SPDIF	PASS	

OS Windows 2008 32 bit

Driver version : 6.0.1.6083

Item	Description	Result	Remark
1	2CH	PASS	
2	Microphone	PASS	
3	LINE-IN	PASS	
4	CDIN	PASS	
5	SPDIF	PASS	

OS Windows 2008 64 bit

Driver version : 6.0.1.083

Item	Description	Result	Remark
1	2CH	PASS	
2	Microphone	PASS	
3	LINE-IN	PASS	
4	CDIN	PASS	
5	SPDIF	PASS	

2.6 HDD Test

Test environment:

OS Windows 7

Model	Interface	Capacity	Size Detect	Data Transfer
Western Digital WD10EARS-00Y5B1	SATA	1.0 TB	PASS	PASS
Western Digital WD10EALX-009BA0	SATA	1.0 TB	PASS	PASS
Western Digital WD5000AAKX-221CA0	SATA	500GB	PASS	PASS
Western Digital WD1600AAJS-00YZCA0	SATA	160GB	PASS	PASS
Western Digital WD800BEVS-00RST0	SATA	80GB	PASS	PASS
MemoRjght STM-25	SATA	64GB	PASS	PASS

2.7 CD-ROM Test

Test environment:

OS Windows 7 32bit

Model	Interface	Detect	Data Transfer	Play CD
Pioneer DVR-212BK	USB	PASS	PASS	PASS
Buffalo DVSM-PC58U2V	USB	PASS	PASS	PASS
LiteOn SOSW-833SX	USB	PASS	PASS	PASS
LiteOn eTAU108	USB	PASS	PASS	PASS

2.8 USB device Test

1. Windows XP 32 bit

Item	Result	Remark
External USB Keyboard Test	PASS	
External USB Mouse Test	PASS	
Hot plugging test	PASS	
CD ROM	PASS	
USB Mass storage	PASS	

2. Windows XP 64 bit

Item	Result	Remark
External USB Keyboard Test	PASS	
External USB Mouse Test	PASS	
Hot plugging test	PASS	
CD ROM	PASS	
USB Mass storage	PASS	

3. Windows Server 2003

Item	Result	Remark
External USB Keyboard Test	PASS	
External USB Mouse Test	PASS	
Hot plugging test	PASS	
CD ROM	PASS	
USB Mass storage	PASS	

4. Windows Vista 32 bit

Item	Result	Remark
External USB Keyboard Test	PASS	
External USB Mouse Test	PASS	
Hot plugging test	PASS	
CD ROM	PASS	
USB Mass storage	PASS	

5. Windows Vista 64 bit

Item	Result	Remark
External USB Keyboard Test	PASS	
External USB Mouse Test	PASS	
Hot plugging test	PASS	
CD ROM	PASS	
USB Mass storage	PASS	

6. Windows 7 32 bit

Item	Result	Remark
External USB Keyboard Test	PASS	
External USB Mouse Test	PASS	
Hot plugging test	PASS	
CD ROM	PASS	
USB Mass storage	PASS	

7. Windows 7 64 bit

Item	Result	Remark
External USB Keyboard Test	PASS	
External USB Mouse Test	PASS	
Hot plugging test	PASS	
CD ROM	PASS	
USB Mass storage	PASS	

8. Windows 2008 32 bit

Item	Result	Remark
External USB Keyboard Test	PASS	
External USB Mouse Test	PASS	
Hot plugging test	PASS	
CD ROM	PASS	
USB Mass storage	PASS	

9. Windows 2008 64 bit

Item	Result	Remark
External USB Keyboard Test	PASS	
External USB Mouse Test	PASS	
Hot plugging test	PASS	
CD ROM	PASS	
USB Mass storage	PASS	

2.9 Serial Port Test

1. MS-DOS

Item	Description	Result	Remark
1	RS-422 & RS-485	Pass	
2	PC Check	Pass	

2. Windows XP 32 bit

Item	Description	Result	Remark
1	Device Manager Check	PASS	
2	b&b com port test	PASS	

3. Windows XP 64 bit

Item	Description	Result	Remark
1	Device Manager Check	PASS	

4. Windows Server 2003

Item	Description	Result	Remark
1	Device Manager Check	PASS	
2	b&b com port test	PASS	

5. Windows Vista 32 bit

Item	Description	Result	Remark
1	Device Manager Check	PASS	
2	b&b com port test	PASS	

6. Windows Vista 64 bit

Item	Description	Result	Remark
1	Device Manager Check	PASS	

7. Windows 7 32 bit

Item	Description	Result	Remark
1	Device Manager Check	PASS	
2	b&b com port test	PASS	

8. Windows 7 64 bit

Item	Description	Result	Remark
1	Device Manager Check	PASS	

9. Windows 2008 32 bit

Item	Description	Result	Remark
1	Device Manager Check	PASS	

10. Windows 2008 64 bit

Item	Description	Result	Remark
1	Device Manager Check	PASS	

2.10 PS2 Keyboard 、 Mouse Test

1. MS-DOS

Item	Description	Result	Remark
1	Keyboard LED Status Test	PASS	
2	Keyboard Typing Test	PASS	
3	Mouse Detect Test	PASS	

2. Windows XP 32 bit

Item	Description	Result	Remark
1	Device Manager Check	PASS	
2	Keyboard Typing Test	PASS	
3	Mouse Detect Test	PASS	

3. Windows XP 64 bit

Item	Description	Result	Remark
1	Device Manager Check	PASS	
2	Keyboard Typing Test	PASS	
3	Mouse Detect Test	PASS	

4. Windows Server 2003

Item	Description	Result	Remark
1	Device Manager Check	PASS	
2	Keyboard Typing Test	PASS	
3	Mouse Detect Test	PASS	

5. Windows Vista 32 bit

Item	Description	Result	Remark
1	Device Manager Check	PASS	
2	Keyboard Typing Test	PASS	
3	Mouse Detect Test	PASS	

6. Windows Vista 64 bit

Item	Description	Result	Remark
1	Device Manager Check	PASS	
2	Keyboard Typing Test	PASS	
3	Mouse Detect Test	PASS	

7. Windows 7 32 bit

Item	Description	Result	Remark
1	Device Manager Check	PASS	
2	Keyboard Typing Test	PASS	
3	Mouse Detect Test	PASS	

8. Windows 7 64 bit

Item	Description	Result	Remark
1	Device Manager Check	PASS	
2	Keyboard Typing Test	PASS	
3	Mouse Detect Test	PASS	

9. Windows 2008 32 bit

Item	Description	Result	Remark
1	Device Manager Check	PASS	
2	Keyboard Typing Test	PASS	
3	Mouse Detect Test	PASS	

10. Windows 2008 64 bit

Item	Description	Result	Remark
1	Device Manager Check	PASS	
2	Keyboard Typing Test	PASS	
3	Mouse Detect Test	PASS	

2.11 LAN Test

Data Transfer Test environment:

-CAT 6 UTP 100M

-8 HR. continuous

1. Windows XP 32 bit

Item	Description	Result	Remark
1	Device Manager Check	PASS	
2	Data Transfer Test	PASS	

2. Windows XP 64 bit

Item	Description	Result	Remark
1	Device Manager Check	PASS	
2	Data Transfer Test	PASS	

3. Windows Server 2003

Item	Description	Result	Remark
1	Device Manager Check	PASS	
2	Data Transfer Test	PASS	

5. Windows Vista 32 bit

Item	Description	Result	Remark
1	Device Manager Check	PASS	
2	Data Transfer Test	PASS	

6. Windows Vista 64 bit

Item	Description	Result	Remark
1	Device Manager Check	PASS	
2	Data Transfer Test	PASS	

7. Windows 7 32 bit

Item	Description	Result	Remark
1	Device Manager Check	PASS	
2	Data Transfer Test	PASS	

8. Windows 7 64 bit

Item	Description	Result	Remark
1	Device Manager Check	PASS	
2	Data Transfer Test	PASS	

9. Windows 2008 32 bit

Item	Description	Result	Remark
1	Device Manager Check	PASS	
2	Data Transfer Test		

10. Windows 2008 64 bit

Item	Description	Result	Remark
1	Device Manager Check	PASS	
2	Data Transfer Test		

2.12 Power Supply Test

Item	TYPE	Description	Result	Remark
1	ATX Power	CWT-300ATX12 300W	PASS	
2	ATX Power	CORSAIR CMPSU-500CX V2	PASS	

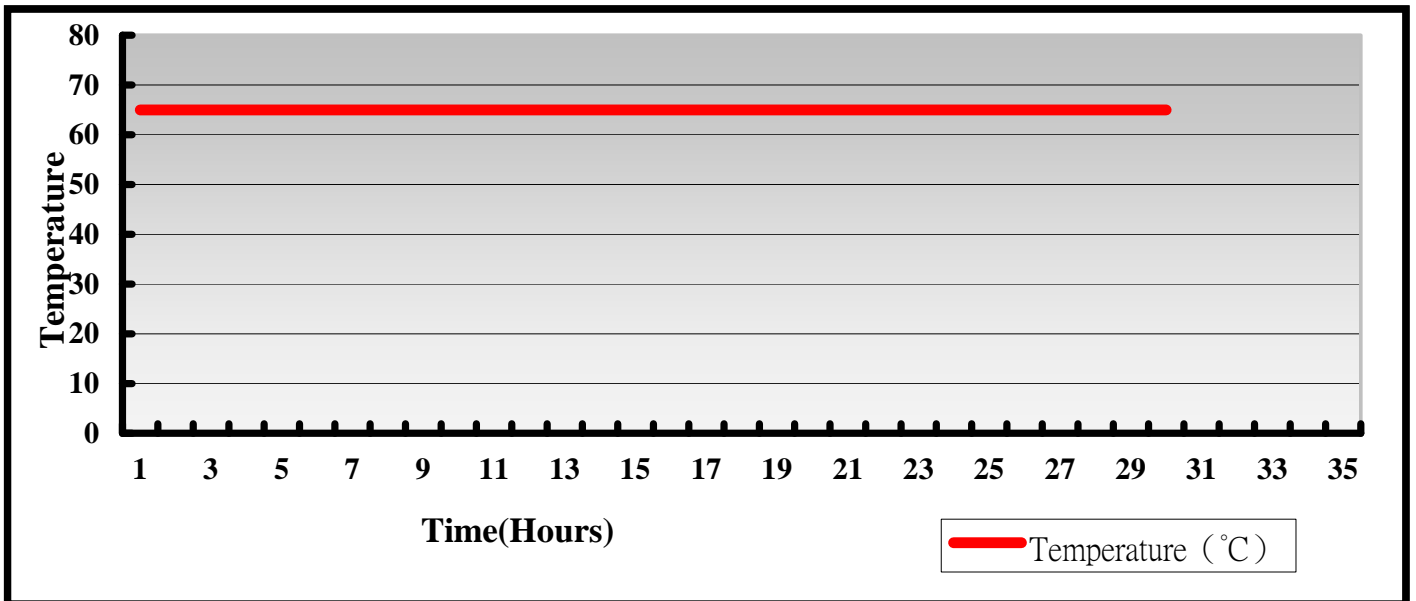
2.13 PCI Express mini card

Motherboard	PCI Express mini card	Remark
LV-67I	MPX-954	PASS
	MPX-750	PASS
	MPX-954E	PASS
	MPX-827	PASS
	MPX-574D	PASS
	MPX-574D2	PASS
	MPX-643	PASS
	MPX-885	PASS
	MPX-3132	PASS
	MPX-9125	PASS
	MPX-7202	PASS
	MPX-6864	PASS
	MPX-TP4R	PASS
MPX-SDVOD	PASS	

3. Environmental test

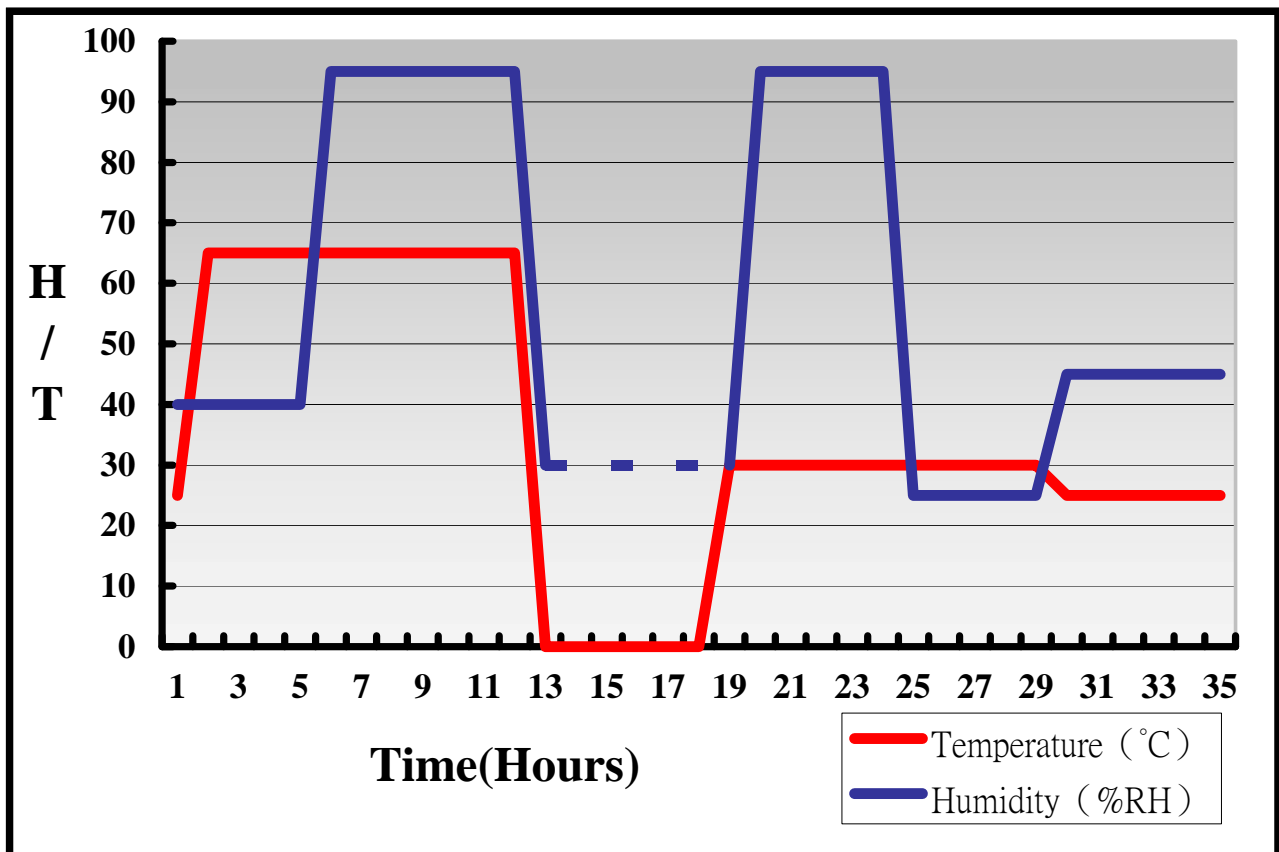
3.1 Temperature Test

System Board	LV-67I
CPU	Intel® Atom™ D2700 2.13GHz
Memory	Kingston DDR3 1333 4GB (D2568JENC PGD9U)
HDD	Western Digital WD10EARS-00Y5B1 1.0TB
Operating OS	Windows 7 32bit
Test Equipment	GIANT FORCE (GTH-150-60-CP-AR)
Test Program	3DMark 2003



Hardware Device list:

System Board	LV-67I
CPU	Intel® Atom™ D2700 2.13GHz
Memory	Kingston DDR3 1333 4GB (D2568JENC PGD9U)
HDD	
Operating OS	Windows 7 32bit
Test Equipment	GIANT FORCE (GTH-150-60-CP-AR)
Test Program	3DMark 2003



Definition : When the temperature is 30 degrees below arrive, humidity measurements have not, so by the dashed line express.

Boot Up Test:

Hardware Device list:

System Board	LV-67I
CPU	Intel® Atom™ D2700 2.13GHz
Memory	Kingston DDR3 1333 4GB (D2568JENC PGD9U)

Temperature	Result	Remark
0°C	PASS	50 Times
65°C	PASS	50 Times

3.2 Thermal measurements at various points on the board

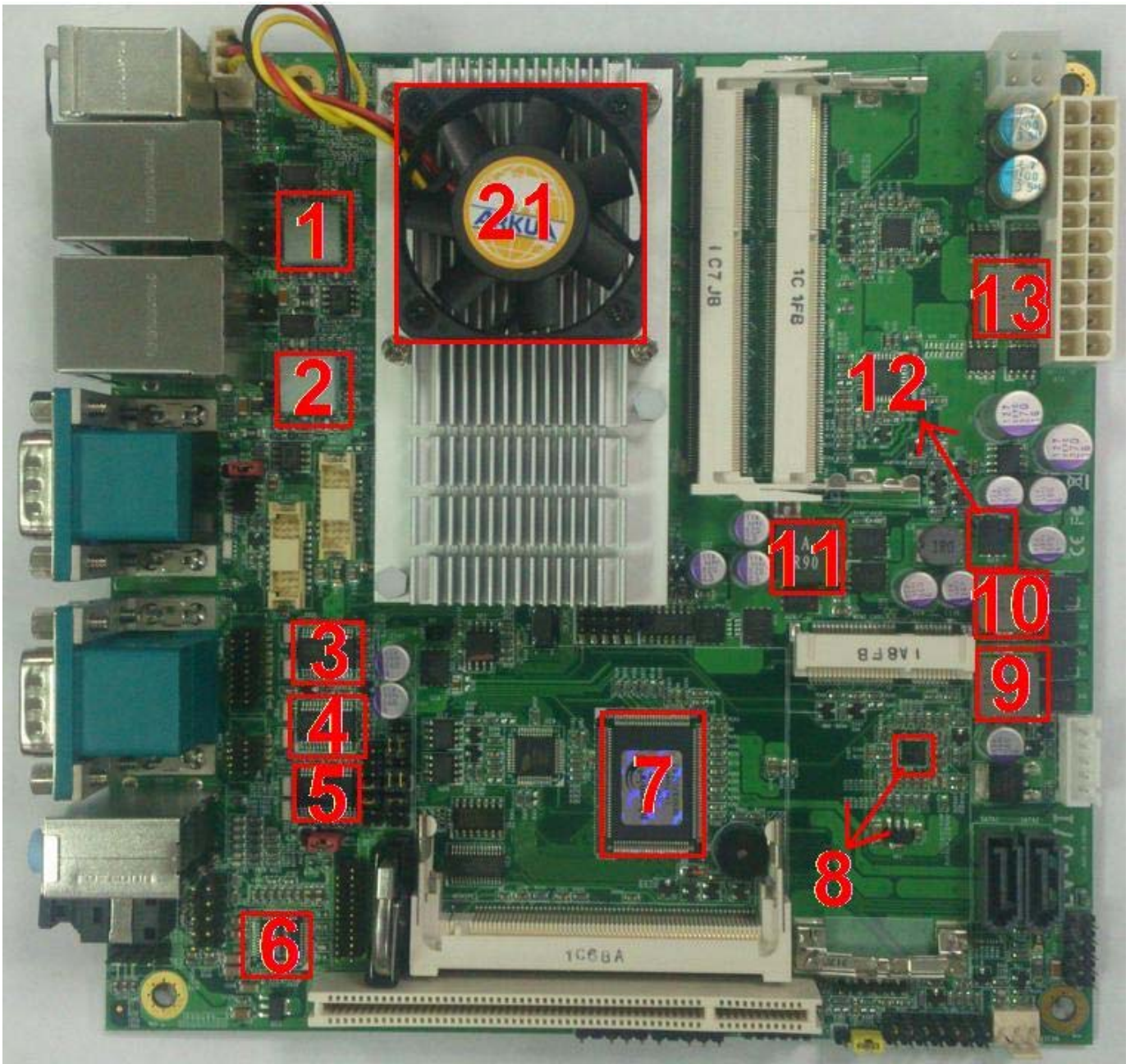
Test Environment :

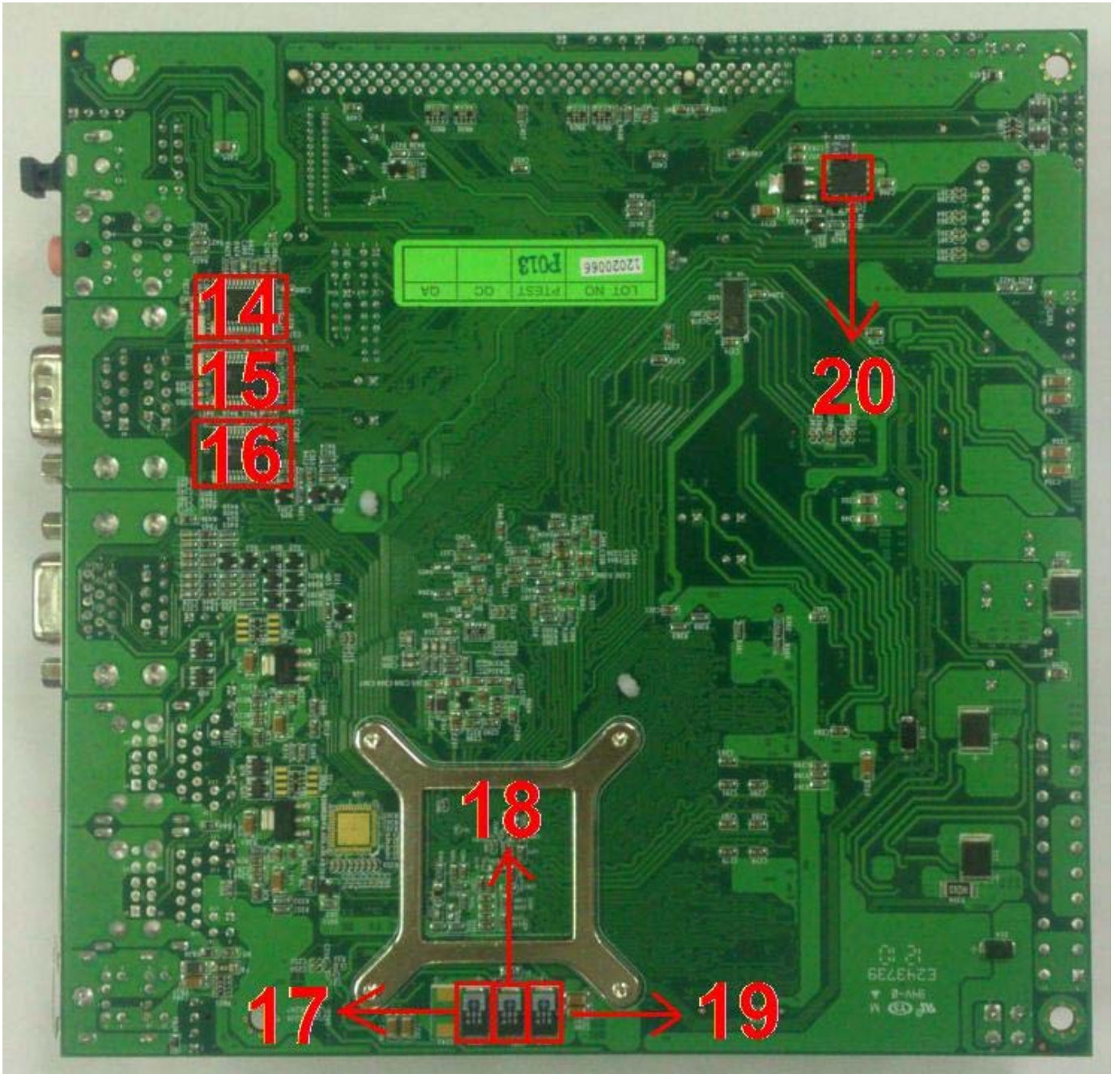
CPU	Intel® Atom™ D2700 2.13GHz
Memory	Kingston DDR3 1333 4GB (D2568JENC PGD9U)
HDD	MemoRight SMT-25 64GB
Power	Channel Well CWT-300ATX12 (300W)
Operating System	Windows 7 32bit
Test Program	BurnIn 6.0

Test Result:

Item	Environmental temperature	
1	U3	31.2°C
2	U6	31.4°C
3	U15	29.8°C
4	U16	29.0°C
5	U21	28.9°C
6	U24	38.1°C
7	LPCIO	30.0°C
8	LC8	31.0°C
9	LC4	31.5°C
10	LC3	34.1°C
11	L4	41.0°C

12	Q23	35.5°C
13	LC2	35.6°C
14	U34	28.1°C
15	U32	28.3°C
16	U31	28.3°C
17	C242	32.5°C
18	C241	33.6°C
19	C240	33.8°C
20	Q60	31.0°C
21	CPUFAN	38.6°C





4. Reliability Test

4.1 Power Consumption Test

1. Test Environment:

Motherboard	LV-67I
CPU	Intel® Atom D2700 Processor(512K Cache, 2.13 GHz)
Memory	Kingston DDR3 1333 4G
HDD	Western Digital 1TB (WD10EARS)

(A) Power Supply: CWT 300W (CWT-300ATX12)

Voltage	MS-DOS Boot up		Windows 7 3DMARK 2003 + PRIME95	
	Current (A)	Power (W)	Current (A)	Power (W)
12V	1.04	12.48	1.02	12.24
5V	1.80	9.00	2.56	12.80
3.3V	0.48	1.584	1.68	5.544
5VSB	0.61	3.05	0.32	1.60

1.a.Test Environment:

The same as above but with LCD panel

Display Panel	AUO PD035VL1(LF) 8" LCD
---------------	-------------------------

(A) Power Supply: CWT 300W (CWT- 300ATX12)

Voltage	MS-DOS Boot up		Windows 7 3DMARK 2003 + PRIME95	
	Current (A)	Power (W)	Current (A)	Power (W)
12V	1.04	12.48	1.04	12.48
5V	1.69	8.45	2.53	12.65
3.3V	1.50	4.95	1.33	4.389
5VSB	0.38	1.90	0.32	1.60

2. Test Environment:

Motherboard	LV-67I
CPU	Intel® Atom N2800 Processor(512K Cache, 1.86 GHz)
Memory	Kingston DDR3 1333 4G
HDD	Western Digital 1TB (WD10EARS)

(A) Power Supply: CWT 300W (CWT-300ATX12)

Voltage	MS-DOS Boot up		Windows 7 3DMARK 2003 + PRIME95	
	Current (A)	Power (W)	Current (A)	Power (W)
12V	1.04	12.48	1.04	12.48
5V	1.57	7.85	2.02	10.10
3.3V	0.74	2.442	0.91	3.003
5VSB	0.31	1.55	0.31	1.55

2.a.Test Environment:

The same as above but with LCD panel

Display Panel	AUO PD035VL1(LF) 8" LCD
---------------	-------------------------

(A) Power Supply: CWT 300W (CWT-300ATX12)

Voltage	MS-DOS Boot up		Windows 7 3DMARK 2003 + PRIME95	
	Current (A)	Power (W)	Current (A)	Power (W)
12V	1.00	12.00	1.00	12.00
5V	1.12	5.60	1.44	7.20
3.3V	1.08	3.564	1.28	4.224
5VSB	0.29	1.45	0.29	1.45

3.Test Environment:

Motherboard	LV-67I
CPU	Intel® Atom D2550 Processor(512K Cache, 1.86 GHz)
Memory	Kingston DDR3 1333 4G
HDD	Western Digital 1TB (WD10EARS)

(A) Power Supply: CWT 300W (CWT-300ATX12)

Voltage	MS-DOS Boot up		Windows 7 3DMARK 2003 + PRIME95	
	Current (A)	Power (W)	Current (A)	Power (W)
12V	1.08	12.96	1.08	12.96
5V	1.09	5.45	1.60	8.00
3.3V	0.70	2.31	0.86	2.84
5VSB	0.29	1.45	0.29	1.45

3.a.Test Environment:

The same as above but with LCD panel

Display Panel	AUO PD035VL1(LF) 8" LCD
---------------	-------------------------

(A) Power Supply: CWT 300W (CWT-300ATX12)

Voltage	MS-DOS Boot up		Windows 7 3DMARK 2003 + PRIME95	
	Current (A)	Power (W)	Current (A)	Power (W)
12V	1.09	13.08	1.09	13.08
5V	1.45	7.25	2.09	10.45
3.3V	1.09	3.597	1.31	4.323
5VSB	0.29	1.45	0.29	1.45

5. Performance Test

5.1 AQUAMARK3

Test Environment
Intel® Atom™ D2700 2.13GHz Transcend DDR3 1066 2GB (K4B1G0846D) MemoRight STM-25 64GB

Windows 7 32bit

Item	WEIGHTED SUITE	Result	Remark
1	GFX	Pass	1215
2	CPU	Pass	4800
3	AquaMark3 TRISCORE	Pass	10786

5.2 ZD CPUMARK

Test Environment
Intel® Atom™ D2700 2.13GHz Transcend DDR3 1066 2GB (K4B1G0846D) MemoRight STM-25 64GB

Windows 7 32bit

Item	WEIGHTED SUITE	Result	Remark
1	SCORE	Pass	152

5.3 3D MARK(2001、2003、2005)

Windows 7 32bit

WEIGHTED SUITE	Test Environment	Result	Remark
3DMARK2001 Score	Intel® Atom™ D2700 2.13GHz Transcend DDR3 1066 2GB (K4B1G0846D) MemoRight STM-25 64GB	PASS	4086
3DMARK2003 Score		PASS	2497
3DMARK2005 Score		PASS	1071

5.4 3D MARK2006

Windows 7 32bit

Item	WEIGHTED SUITE	Test Environment	Result	Remark
1	3DMARK Score	Intel® Atom™ D2700 2.13GHz Transcend DDR3 1066 2GB (K4B1G0846D) MemoRight STM-25 64G	PASS	450
2	SM2.0 Score		PASS	174
3	HDR/SM3.0 Score		PASS	139
4	CPU Score		PASS	1103

5.5 PC MARK2002

Test Environment
Intel® Atom™ D2700 2.13GHz Kingston DDR3 1333 GB (D2568JENC PGD9U) MemoRight SMT-25 64GB

Windows 7 32bit

Item	Weighted Suite	Result	Remark
1	CPU Score	PASS	N/A
2	Memory Score	PASS	8933
3	HDD Score	PASS	4191

5.6 PC MARK2004

Test Environment
Intel® Atom™ D2700 2.13GHz Kingston DDR3 1333 GB (D2568JENC PGD9U) MemoRight SMT-25 64GB

Windows 7 32-bit

Item	Weighted Suite	Result	Remark
1	PCMark Score	PASS	2453
2	CPU Score	PASS	2776
3	Memory Score	PASS	4144
4	Graphic Score	PASS	1036
5	HDD Score	PASS	21057

5.7 PC MARK2005

Test Environment
Intel® Atom™ D2700 2.13GHz Kingston DDR3 1333 GB (D2568JENC PGD9U) MemoRight SMT-25 64GB

Windows 7 32-bit

Item	Weighted Suite	Result	Remark
1	PCMark Score	PASS	N/A
2	CPU Score	PASS	2208
3	Memory Score	PASS	3182
4	Graphic Score	PASS	N/A
5	HDD Score	PASS	15251

5.8 Storage Performance

5.8.1 HDD

Test environment:

OS Windows 7

Program (HD Tune)

HDD Model	Interface	Capacity	Average	Burst Rate	Access time
Western Digital WD10EARS-00Y5B1	SATA	1.0TB	72.4 MB/sec	115.5 MB/sec	15.9 ms
Western Digital WD10EALX-009BA0	SATA	1.0TB	98.0 MB/sec	125.0 MB/sec	13.5 ms
Western Digital WD5000AAKX-221CA0	SATA	500GB	100.8 MB/sec	124.1 MB/sec	15.7 ms
Western Digital WD1600AAJS-00YZCA0	SATA	160GB	89.6 MB/sec	124.7 MB/sec	15.3 ms
Western Digital WD800BEVS-00RST0	SATA	80GB	34.7 MB/sec	81.2 MB/sec	17.4 ms
MemoRjght STM-25	SATA	64GB	159.4 MB/sec	6424 MB/sec	0.2 ms

5.8.2 CD-ROM

Test environment:

OS Windows 7

Program (NERO)

CD-ROM Model	Interface	Average Speed	Full Read	Burst Rate	CD
Pioneer DVR-212BK	SATA	19.42 x	84 ms	36 MB/s	52X CD-R
Buffalo DVSM-PC58U2V	USB	11.03 x	89 ms	20 MB/s	52X CD-R
LiteOn SOSW-833SX	USB	4.29 x	126 ms	16 MB/s	52X CD-R
LiteOn eTAU108	USB	11.03 x	103 ms	18 MB/s	52X CD-R