

**PMCA**  
**Test Report**  
**Edition 1.01**

**2006/10/15**



Test Engineer :

Identify:

# Index

Index .....	2
1.Function test .....	4
1.1Hardware function .....	4
1.2 BIOS function .....	6
1.3 Driver.....	8
2. Compatibility test .....	9
2.1 CPU Test .....	9
2.2 Memory Test.....	13
2.3 VGA Graphic Test.....	14
2.4 Audio Test.....	15
2.5 HDD Test .....	16
2.6 USB Test .....	20
2.7 Serial Port Test .....	20
2.8 IrDA Test.....	21
2.9 Keyboard Test .....	22
2.10 Mouse Test.....	23
2.11 LAN Module Test .....	25
2.12 Power Supply Test.....	26
4. Linux "Suse 10.0" .....	26
2.13 CD-ROM Test .....	27
2.14 Floppy Drive Test.....	33
2.15 Printer Port Test.....	35
2.16 Boot Up Test.....	36
2.17 Os Install .....	36
3. Environmental test.....	37
3.1 Temperature Test.....	37
4. Reliability Test.....	38
4.1 Power Consumption Test .....	38
4.2 Thermal measurements at various points on the board.....	43

5. Performance Test .....	45
5.1 Content Creation WinStone 2001 .....	45
5.2 Business WinStone 2004 .....	47
5.3 Multimedia Content Creation Winstone 2003 .....	48
5.4 Multimedia Content Creation Winstone 2004 .....	49
5.5 3D MARK .....	50
5.6 PCMARK 2002 .....	51
5.7 PCMARK 2004 .....	52
Windows XP .....	52
5.8 PCMARK 2005 .....	53

# 1.Function test

## 1.1Hardware function

### Base Function Test

1	Power Button	PASS
2	Reset	PASS
3	Power LED	PASS
4	HDD LED	PASS
5	IDE Primary Master	PASS
6	IDE Primary Slave	PASS
7	IDE Secondary Master	PASS
8	IDE Secondary Slave	PASS
9	Floppy	PASS
10	Compact Flash	PASS
11	DIMM	PASS
12	VGA Port	PASS
13	Keyboard	PASS
14	Mouse	PASS
15	AUDIO Port	PASS
16	COM 1	PASS
17	COM 2	PASS
18	COM3	PASS
19	COM4	PASS
20	COM5	PASS
21	COM6	PASS
20	Printer Port	PASS
21	IRDA	PASS
22	SYSFAN	PASS
23	CPUFAN	PASS

<b>24</b>	MINI PCI	PASS
<b>25</b>	PCIE 16X	PASS
<b>26</b>	PCIE 1X	PASS
<b>27</b>	DOC	PASS
<b>28</b>	TV OUT	PASS
<b>29</b>	ISA Slot	PASS
<b>30</b>	CN_AUDIO	PASS
<b>31</b>	PCI1	PASS
<b>32</b>	PCI2	PASS
<b>33</b>	CN_SPDIFOUT	PASS
<b>34</b>	CN_DIO	PASS
<b>35</b>	LVDS	PASS

## **2.0 PITCH (DIP)**

1	JRTC	PASS
2	JVLCD	PASS
3	JCFSEL	PASS
5	JCSEL 1/2	PASS

## 1.2 BIOS function

Item	Description	Result	Remark
1	Press 'Del' to run Setup Utility	PASS	
2	Ctrl-Alt-Del – Soft-Reboot	PASS	
3	Save & Exit Setup	PASS	
4	Date & Time Setting	PASS	
5	Drive A	PASS	
6	Audio Function	PASS	
7	Quick Power On Self Test	PASS	
8	Boot Device Setting	PASS	
9	Boot Up Floppy Seek	PASS	
10	Boot Up Num Lock Status	PASS	
11	Boot Display	PASS	
12	Panel Number	PASS	
13	On Chip Primary IDE	PASS	
14	On Chip Secondary IDE	PASS	
15	ACPI Suspend Type	PASS	
16	Onboard Lan Boot ROM	PASS	
17	Onboard Serial Port	PASS	
18	USB Controller	PASS	
19	USB Keyboard Support	PASS	
20	USB Mouse Support	PASS	
21	Onboard FDC Controller	Pass	
22	Soft-Off by PWRBTN	PASS	
23	Power On Function	PASS	
24	PS2MS Wakeup from S3 /S4 /S5	PASS	
25	PS2KB Wakeup from S3 /S4 /S5	PASS	
26	ACPI Function	PASS	

27	Wake-Up On LAN	PASS	
28	Resume by Alarm	PASS	
29	Watching Dog Timer Select	PASS	
30	Init Display First	PASS	
31	Onboard Parallel Port	PASS	
32	PWRON After PWR-Fail	PASS	
33	Power On by Ring	PASS	
34	Onboard LAN1 control	PASS	
35	Onboard LAN2 control	PASS	
36	UART Mode Select	PASS	
37	RxD , Txd Active	PASS	
38	IR Transmission Delay	PASS	
39	UR2 duplex Mode	PASS	
40	Use IR Pins	PASS	
41	CPU THRM-Throttling	PASS	
42	Wake-up by PCI card	PASS	
43	USB KB Wake-up From S3	PASS	
44	Wake-Up by PCI Card	PASS	

## 1.3 Driver

### 1. Windows XP SP2 Driver Test

	<b>Description</b>	<b>Result</b>	<b>Remark</b>
1	Chip set Driver	PASS	
2	VGA Driver	PASS	
3	Audio Driver	PASS	
4	LAN Driver	PASS	



## 2. Compatibility test

### 2.1 CPU Test

Processor: Intel 1.46GHZ

O.S: MS-DOS 6.22

Item	Description	Result	Remark
1	CPU Type Detect	PASS	
2	CPU Speed Detect	PASS	
3	OS Running Stability	PASS	

### Windows 2003 Server

Item	Description	Result	Remark
1	CPU Type Detect	PASS	
2	CPU Speed Detect	PASS	
3	OS Running Stability	PASS	

### Windows XP

Item	Description	Result	Remark
1	CPU Type Detect	PASS	
2	CPU Speed Detect	PASS	
3	OS Running Stability	PASS	

**Processor: Intel 1.73GHZ**

**O.S: MS-DOS 6.22**

<b>Item</b>	<b>Description</b>	<b>Result</b>	<b>Remark</b>
1	CPU Type Detect	PASS	
2	CPU Speed Detect	PASS	
3	OS Running Stability	PASS	

**Windows 2003 Server**

<b>Item</b>	<b>Description</b>	<b>Result</b>	<b>Remark</b>
1	CPU Type Detect	PASS	
2	CPU Speed Detect	PASS	
3	OS Running Stability	PASS	

**Windows XP**

<b>Item</b>	<b>Description</b>	<b>Result</b>	<b>Remark</b>
1	CPU Type Detect	PASS	
2	CPU Speed Detect	PASS	
3	OS Running Stability	PASS	

**Processor: Intel 1.83 GHZ**

**O.S: MS-DOS 6.22**

<b>Item</b>	<b>Description</b>	<b>Result</b>	<b>Remark</b>
1	CPU Type Detect	PASS	
2	CPU Speed Detect	PASS	
3	OS Running Stability	PASS	

### Windows 2003 Server

Item	Description	Result	Remark
1	CPU Type Detect	PASS	
2	CPU Speed Detect	PASS	
3	OS Running Stability	PASS	

### Windows XP

Item	Description	Result	Remark
1	CPU Type Detect	PASS	
2	CPU Speed Detect	PASS	
3	OS Running Stability	PASS	

**Processor: Intel 2.16GHZ**

**O.S: MS-DOS 6.22**

<b>Item</b>	<b>Description</b>	<b>Result</b>	<b>Remark</b>
1	CPU Type Detect	PASS	
2	CPU Speed Detect	PASS	
3	OS Running Stability	PASS	

**Windows 2003 Server**

<b>Item</b>	<b>Description</b>	<b>Result</b>	<b>Remark</b>
1	CPU Type Detect	PASS	
2	CPU Speed Detect	PASS	
3	OS Running Stability	PASS	

**Windows XP**

<b>Item</b>	<b>Description</b>	<b>Result</b>	<b>Remark</b>
1	CPU Type Detect	PASS	
2	CPU Speed Detect	PASS	
3	OS Running Stability	PASS	

## 2.2 Memory Test

### 1. ADATA DDRII 533 512MB (ELPADI E5108AB-5C-E)

Item	Description	Result	Remark
1	Boot	PASS	
2	MS-DOS 6.22	PASS	
3	Windows 2003 Server	PASS	
4	Windows XP	PASS	

### 2. ADATA DDRII 667 1GB (E5108AB-6E-E)

Item	Description	Result	Remark
1	Boot	PASS	
2	MS-DOS 6.22	PASS	
3	Windows 2003 Server	PASS	
4	Windows XP	PASS	

### 3. APACER DDRII 533 1G(K4T51083QB-ZKD5)

Item	Description	Result	Remark
1	Boot	PASS	
2	MS-DOS 6.22	PASS	
3	Windows 2003 Server	PASS	
4	Windows XP	PASS	

### 4. Kingstone DDRII 533 1GB (Hynix HY5PS12821)

Item	Description	Result	Remark
1	Boot	PASS	
2	MS-DOS 6.22	PASS	
3	Windows 2003 Server	PASS	
4	Windows XP	PASS	

## 2.3 VGA Graphic Test

### 1. Windows XP

Item	Description	Result	Remark
1	Driver Install	PASS	
2	Resolution/Color Change	PASS	
3	Dual View Test	PASS	With LVDS LCD PANEL
4	CRT Display Test	PASS	
5	CRT Display Quality Test	PASS	

## 2.4 Audio Test

### 1. Windows 2003 Server

Item	Description	Result	Remark
1	Driver Install	PASS	
2	Speaker Left	PASS	
3	Speaker Right	PASS	
4	Sound Effect	PASS	
5	Equalizer	PASS	
6	Micophone	PASS	

### 2. Windows XP

Item	Description	Result	Remark
1	Driver Install	PASS	
2	Speaker Left	PASS	
3	Speaker Right	PASS	
4	Sound Effect	PASS	
5	Equalizer	PASS	
6	Microphone	PASS	

## 2.5 HDD Test

Model: Western Digital WD3000JS-22PDB0 300GB(SATA)

### 1. MS-DOS 6.22

Item	Description	Result	Remark
1	HDD Size Detect	PASS	
2	HDD Read/Write	PASS	
3	HDD Partition/Format	PASS	
4	HDD LED Check	PASS	

### 2. Windows 2003 Server

Item	Description	Result	Remark
1	HDD Detect	PASS	
2	HDD Read/Write	PASS	
3	HDD Data Transfer	PASS	
4	HDD Format	PASS	
5	HDD LED Check	PASS	

### 3. Windows XP

Item	Description	Result	Remark
1	HDD Detect	PASS	
2	HDD Read/Write	PASS	
3	HDD Data Transfer	PASS	
4	HDD Format	PASS	
5	HDD LED Check	PASS	



## Model: Maxtor Diamondmax Plus 8 40GB

### 1. MS-DOS 6.22

Item	Description	Result	Remark
1	HDD Size Detect	PASS	
2	HDD Read/Write	PASS	
3	HDD Partition/Format	PASS	
4	HDD LED Check	PASS	

### 2. Windows 2003 Server

Item	Description	Result	Remark
1	HDD Detect	PASS	
2	HDD Read/Write	PASS	
3	HDD Data Transfer	PASS	
4	HDD Format	PASS	
5	HDD LED Check	PASS	

### 3. Windows XP

Item	Description	Result	Remark
1	HDD Detect	PASS	
2	HDD Read/Write	PASS	
3	HDD Data Transfer	PASS	
4	HDD Format	PASS	
5	HDD LED Check	PASS	

## Model: Maxtor Diamondmax 160GB

### 1. MS-DOS 6.22

Item	Description	Result	Remark
1	HDD Size Detect	Pass	
2	HDD Read/Write	Pass	
3	HDD Partition/Format	Pass	
4	HDD LED Check	Pass	

### 2. Windows 2003 Server

Item	Description	Result	Remark
1	HDD Detect	PASS	
2	HDD Read/Write	PASS	
3	HDD Data Transfer	PASS	
4	HDD Format	PASS	
5	HDD LED Check	PASS	

### 3. Windows XP

Item	Description	Result	Remark
1	HDD Detect	PASS	
2	HDD Read/Write	PASS	
3	HDD Data Transfer	PASS	
4	HDD Format	PASS	
5	HDD LED Check	PASS	

## Model: Seagate ST380011A-314 80G

### 1. MS-DOS 6.22

Item	Description	Result	Remark
1	HDD Size Detect	PASS	
2	HDD Read/Write	PASS	
3	HDD Partition/Format	PASS	
4	HDD LED Check	PASS	

### 2. Windows 2003 Server

Item	Description	Result	Remark
1	HDD Detect	PASS	
2	HDD Read/Write	PASS	
3	HDD Data Transfer	PASS	
4	HDD Format	PASS	
5	HDD LED Check	PASS	

### 3. Windows XP

Item	Description	Result	Remark
1	HDD Detect	PASS	
2	HDD Read/Write	PASS	
3	HDD Data Transfer	PASS	
4	HDD Format	PASS	
5	HDD LED Check	PASS	

## 2.6 USB Test

### 1. Windows 2003 Server

Item	Description	Result	Remark
1	Device Manager Check	PASS	
2	External USB Keyboard Test	PASS	
3	External USB Mouse Test	PASS	
4	Hot plugging test	PASS	

### 2. Windows XP

Item	Description	Result	Remark
1	Device Manager Check	PASS	
2	External USB Keyboard Test	PASS	
3	External USB Mouse Test	PASS	
4	Hot plugging test	PASS	

## 2.7 Serial Port Test

### 1. Windows XP

Item	Description	Result	Remark
1	Device Manager Check	PASS	
2	Driver Install	PASS	
3	RS-232 Mouse Test (PNP)	PASS	
4	RS-232 Modem Test (PNP)	PASS	
5	B&B Electronics COM Port RS-232 Test (W/Loop-Back)	PASS	

## 2.8 IrDA Test

### 2. Windows XP

Item	Description	Result	Remark
1	Device Manager Check	PASS	
2	SIR Mode Data Transfer Test	PASS	
3	SIR Data Transfer Quality Test	PASS	
4	SIR Loop-Back Test	PASS	

## 2.9 Keyboard Test

### 1. MS-DOS 6.22

Item	Description	Result	Remark
1	Keyboard LED Status Test	PASS	
2	Keyboard Command Test	PASS	
3	Keyboard Typing Test	PASS	

### 3. Windows 2003 Server

Item	Description	Result	Remark
1	Device Manager Check	PASS	
2	Keyboard LED Status Test	PASS	
3	Keyboard Typing Test	PASS	

### 4. Windows XP

Item	Description	Result	Remark
1	Device Manager Check	PASS	
2	Keyboard LED Status Test	PASS	
3	Keyboard Typing Test	PASS	

### 6. Linux "Suse 10"

Item	Description	Result	Remark
1	Device Manager Check	PASS	
2	Keyboard LED Status Test	PASS	
3	Keyboard Typing Test	PASS	

### 7. Linux "Fedora Core4"

<b>Item</b>	<b>Description</b>	<b>Result</b>	<b>Remark</b>
1	Device Manager Check	Pass	
2	Keyboard LED Status Test	Pass	
3	Keyboard Typing Test	Pass	

## **2.10 Mouse Test**

### **2. Windows 2003 Server**

<b>Item</b>	<b>Description</b>	<b>Result</b>	<b>Remark</b>
1	Device Manager Check	PASS	
2	Mouse Detect Test (PNP)	PASS	

### 3. Windows XP

<b>Item</b>	<b>Description</b>	<b>Result</b>	<b>Remark</b>
1	Device Manager Check	PASS	
2	Mouse Detect Test (PNP)	PASS	

### 5. Linux "Suse 10.0"

<b>Item</b>	<b>Description</b>	<b>Result</b>	<b>Remark</b>
1	Device Manager Check	PASS	
2	Mouse Detect Test (PNP)	PASS	

### 6. Linux "Fedora Core4"

<b>Item</b>	<b>Description</b>	<b>Result</b>	<b>Remark</b>
1	Device Manager Check	Pass	
2	Mouse Detect Test (PNP)	Pass	



## 2.11 LAN Module Test

### 2. Windows XP

Item	Description	Result	Remark
1	LAN Module Install Test	PASS	
2	Driver Install	PASS	
3	Device Manager Check	PASS	
4	Data Transfer Test	PASS	

### 3. Windows 2003 Server Standard Edition

Item	Description	Result	Remark
1	LAN Module Install Test	PASS	
2	Driver Install	PASS	
3	Device Manager Check	PASS	
4	Data Transfer Test	PASS	

## 2.12 Power Supply Test

### 1. MS-DOS 6.22

Item	Description	Verification	
		Result	Remark
1	ATX Power On/Off	PASS	FSP300-60ATV(300W)
2	ATX Power On/Off	PASS	Sea sonic SS-330HB(330W)
3.	ATX Power On/Off	PASS	Seven team ST-300WAP(300W)

### 2. Windows 2003

Item	Description	Verification	
		Result	Remark
1	ATX Power On/Off	Pass	FSP300-60ATV(300W)
2	ATX Power On/Off	PASS	Sea sonic SS-330HB(330W)
3	ATX Power On/Off	PASS	Seven team ST-300WAP(300W)

### 3. Windows XP

Item	Description	Verification	
		Result	Remark
1	ATX Power On/Off	Pass	FSP300-60ATV(300W)
2	ATX Power On/Off	PASS	Sea sonic SS-330HB(330W)
3	ATX Power On/Off	PASS	Seven team ST-300WAP(300W)

### 4. Linux "Suse 10.0"

Item	Description	Verification	
		Result	Remark
1	ATX Power On/Off	Pass	FSP300-60ATV(300W))
2	ATX Power On/Off	PASS	ENH Windmill PRO(315W)
3	ATX Power On/Off	Pass	Seven team ST-300WAP(300W)

## 5. Linux "Fedora

Item	Description	Verification	
		Result	Remark
1	ATX Power On/Off	Pass	FSP300-60ATV(300W)
2	ATX Power On/Off	PASS	Sea sonic SS-330HB(330W)
3	ATX Power On/Off	PASS	Seven team ST-300WAP(300W)

## 2.13 CD-ROM Test

Model:4KUS DVD COB-6V5216

### 1. MS-DOS 6.22

Item	Description	Result	Remark
1	CD-ROM Detect	PASS	
2	CD-ROM Read	PASS	
3	CD-ROM Bootable	PASS	
4	CD-ROM Data Transfer	PASS	

### 3. Windows 2003 Server

Item	Description	Result	Remark
1	CD-ROM Detect	PASS	
2	CD-ROM Read	PASS	
3	CD-ROM Data Transfer	PASS	

### 4. Windows XP

Item	Description	Result	Remark
1	CD-ROM Detect	PASS	
2	CD-ROM Read	PASS	
3	CD-ROM Data Transfer	PASS	

**Model: ASUS CD-S400/A****1. MS-DOS 6.22**

<b>Item</b>	<b>Description</b>	<b>Result</b>	<b>Remark</b>
1	CD-ROM Detect	PASS	
2	CD-ROM Read	PASS	
3	CD-ROM Bootable	PASS	
4	CD-ROM Data Transfer	PASS	

**2. Windows 2003 Server**

<b>Item</b>	<b>Description</b>	<b>Result</b>	<b>Remark</b>
1	CD-ROM Detect	PASS	
2	CD-ROM Read	PASS	
3	CD-ROM Data Transfer	PASS	

**3. Windows XP**

<b>Item</b>	<b>Description</b>	<b>Result</b>	<b>Remark</b>
1	CD-ROM Detect	PASS	
2	CD-ROM Read	PASS	
3	CD-ROM Data Transfer	PASS	

**Model: BTC LCD-5200S****1. MS-DOS 6.22**

<b>Item</b>	<b>Description</b>	<b>Result</b>	<b>Remark</b>
1	CD-ROM Detect	PASS	
2	CD-ROM Read	PASS	
3	CD-ROM Bootable	PASS	
4	CD-ROM Data Transfer	PASS	

## 2. Windows 2003 Server

Item	Description	Result	Remark
1	CD-ROM Detect	PASS	
2	CD-ROM Read	PASS	
3	CD-ROM Data Transfer	PASS	

## 3. Windows XP

Item	Description	Result	Remark
1	CD-ROM Detect	PASS	
2	CD-ROM Read	PASS	
3	CD-ROM Data Transfer	PASS	

**Model: TEAC CD-532E**

## 1. MS-DOS 6.22

Item	Description	Result	Remark
1	CD-ROM Detect	PASS	
2	CD-ROM Read	PASS	
3	CD-ROM Bootable	PASS	
4	CD-ROM Data Transfer	PASS	

## 2. Windows 2003 Server

Item	Description	Result	Remark
1	CD-ROM Detect	PASS	
2	CD-ROM Read	PASS	
3	CD-ROM Data Transfer	PASS	

### 3. Windows XP

Item	Description	Result	Remark
1	CD-ROM Detect	PASS	
2	CD-ROM Read	PASS	
3	CD-ROM Data Transfer	PASS	

### Model: TEAC CD-540E

#### 1. MS-DOS 6.22

Item	Description	Result	Remark
1	CD-ROM Detect	PASS	
2	CD-ROM Read	PASS	
3	CD-ROM Bootable	PASS	
4	CD-ROM Data Transfer	PASS	

#### 2. Windows 2003 Server

Item	Description	Result	Remark
1	CD-ROM Detect	PASS	
2	CD-ROM Read	PASS	
3	CD-ROM Data Transfer	PASS	

#### 3. Windows XP

Item	Description	Result	Remark
1	CD-ROM Detect	PASS	
2	CD-ROM Read	PASS	
3	CD-ROM Data Transfer	PASS	

**Model: BENQ CB523C****1. MS-DOS 6.22**

<b>Item</b>	<b>Description</b>	<b>Result</b>	<b>Remark</b>
1	CD-ROM Detect	PASS	
2	CD-ROM Read	PASS	
3	CD-ROM Bootable	PASS	
4	CD-ROM Data Transfer	PASS	

**2. Windows 2003 Server**

<b>Item</b>	<b>Description</b>	<b>Result</b>	<b>Remark</b>
1	CD-ROM Detect	PASS	
2	CD-ROM Read	PASS	
3	CD-ROM Data Transfer	PASS	

**3. Windows XP**

<b>Item</b>	<b>Description</b>	<b>Result</b>	<b>Remark</b>
1	CD-ROM Detect	PASS	
2	CD-ROM Read	PASS	
3	CD-ROM Data Transfer	PASS	

**Model: SYNnex COM-5216****1. MS-DOS 6.22**

<b>Item</b>	<b>Description</b>	<b>Result</b>	<b>Remark</b>
1	CD-ROM Detect	PASS	
2	CD-ROM Read	PASS	
3	CD-ROM Bootable	PASS	
4	CD-ROM Data Transfer	PASS	

## 2. Windows 2003 Server

<b>Item</b>	<b>Description</b>	<b>Result</b>	<b>Remark</b>
1	CD-ROM Detect	PASS	
2	CD-ROM Read	PASS	
3	CD-ROM Data Transfer	PASS	

## 3. Windows XP

<b>Item</b>	<b>Description</b>	<b>Result</b>	<b>Remark</b>
1	CD-ROM Detect	PASS	
2	CD-ROM Read	PASS	
3	CD-ROM Data Transfer	PASS	



## 2.14 Floppy Drive Test

Model: SONY MPF920-E

### 1. MS-DOS 6.22

Item	Description	Result	Remark
1	Floppy Drive Detect	Pass	
2	Floppy Read/Write	PASS	
3	Boot from Floppy	Pass	
4	Floppy Data Transfer	PASS	

### 2. Windows 2003 Server

Item	Description	Result	Remark
1	Floppy Drive Detect	PASS	
2	Floppy Read/Write	PASS	
3	Floppy Data Transfer	PASS	

### 3. Windows XP

Item	Description	Result	Remark
1	Floppy Drive Detect	Pass	
2	Floppy Read/Write	Pass	
3	Floppy Data Transfer	Pass	

Model: MITSUMI D353M3

### 1. MS-DOS 6.22

Item	Description	Result	Remark
1	Floppy Drive Detect	Pass	
2	Floppy Read/Write	PASS	
3	Boot from Floppy	Pass	
4	Floppy Data Transfer	PASS	

## 2. Windows 2003 Server

Item	Description	Result	Remark
1	Floppy Drive Detect	PASS	
2	Floppy Read/Write	PASS	
3	Floppy Data Transfer	PASS	

## 3. Windows XP

Item	Description	Result	Remark
1	Floppy Drive Detect	Pass	
2	Floppy Read/Write	Pass	
3	Floppy Data Transfer	Pass	

## 2.15 Printer Port Test

### 1. Windows XP

Item	Description	Result	Remark
1	ECP/EPP PRINT TEST	PASS	

### 2. Windows 2003 Server

Item	Description	Result	Remark
1	ECP/EPP PRINT TEST	PASS	

## 2.16 Boot Up Test

Item	Description	Result	Remark
1	Soft boot from HDD	PASS	
2	Soft boot from CD-ROM	PASS	
3	Reboot test with Win 2003 Server	PASS	
4	Reboot test with Win XP	Pass	

## 2.17 Os Install

Item	Description	Result	Remark
1	Windows XP SP2	Pass	
2	Linux "Fedora	PASS	
3	Windows 2003 Server Standard Edition	PASS	
4	Linux "Suse 10"	PASS	

### 3. Environmental test

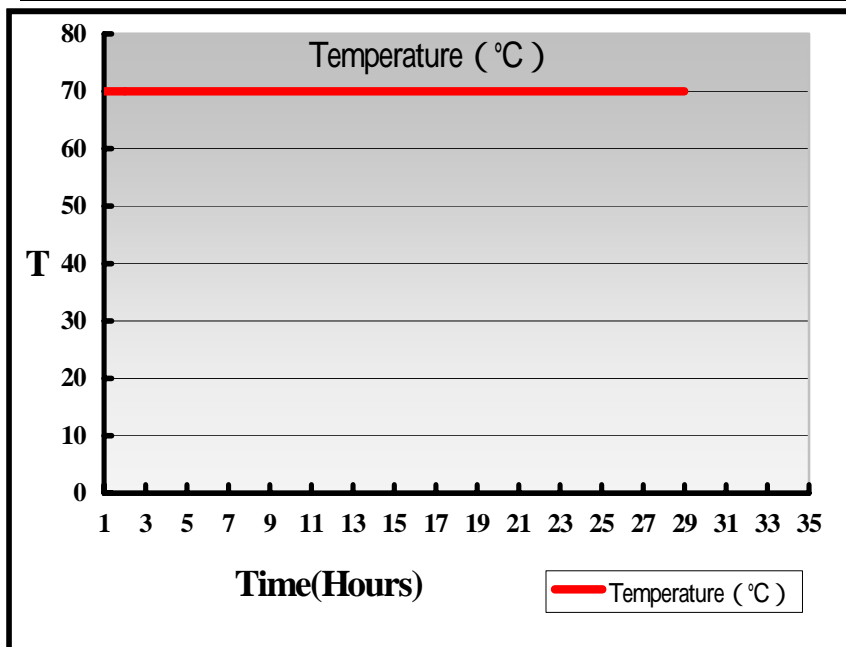
#### 3.1 Temperature Test

Hardware Device list:

System Board	PMCA
CPU	Intel T2500 2.0 GHZ
Memory	APACER DDRII 533 1G(HYB18T512 800AF37)
HDD	Maxtor Diamondmax 160GB
KEYBOARD	KRONE K9810
MOUSE	DCS USBMOUSE
Test Equipment	THERMOTRON 2800 Programmer/Controller
Test Program	BCM

Test Result:

Item	Description	Result	Remark
1	65°C RUN 3Dmark03	Pass	
2	-20°C Boot Test	pass	50 Times
3	70°C Boot Test	PASS	50 Times



## 4. Reliability Test

### 4.1 Power Consumption Test

#### 1.Test Environment:

CPU	Intel T7400 2.16 GHZ
Memory	Kingstone DDRII 533 1GB (Hynix HY5PS12821)
HDD	Maxtor Diamondmax 160GB
Test OS	Windows XP
Test Program	3DMARK 2003

#### Test Result:

Voltae	Current ( A )	Power ( W )	Remark
5V	2.88	14.4	
12V	1.82	21.84	
3.3V	0.72	2.367	

#### 2.Test Environment:

CPU	Intel T7400 2.16 GHZ
Memory	Kingstone DDRII 533 1GB (Hynix HY5PS12821)
17" Panel	AU ME701G01
HDD	Maxtor Diamondmax 160GB
Test OS	Windows XP
Test Program	3DMARK 2003

#### Test Result:

Voltae	Current ( A )	Power ( W )	Remark
5V	3.71	18.55	
12V	3.6	43.2	
3.3V	0.74	2.442	

### 3.Test Environment:

CPU	Intel / MEROM T5600/1.83 GHZ
Memory	Adata DDRII 667 1GB (Adata E5108AB-6E-E)*2
HDD	Seagate ST380011A 80G
17" Pannel	AU ME701G01
Test OS	Windows XP
Test Program	3DMARK 2003

### Test Result:

Voltae	Current ( A )	Power ( W )	Remark
5V	4.51	22.55	
12V	3.87	46.44	
3.3V	1.24	4.092	

### 4.Test Environment:

CPU	Intel / MEROM T5600/1.83 GHZ
Memory	Adata DDRII 667 1GB (Adata E5108AB-6E-E)*2
HDD	Seagate ST380011A 80G
CDROM	4KUS DVD COB-6V5216
Test OS	Windows XP
Test Program	3DMARK 2003

### Test Result:

Voltae	Current ( A )	Power ( W )	Remark
5V	3.91	19.55	
12V	2.09	25.08	
3.3V	1.3	4.29	

## 5.Test Environment:

CPU	Intel / MEROM T5600/1.83 GHZ
Memory	Adata DDRII 667 1GB (Adata E5108AB-6E-E)*2
HDD1	Seagate ST380011A 80G
HDD2	Seagate ST3250620AS 250GB
FDD	SONY MPF920-E
CDROM	4KUS DVD COB-6V5216
Test OS	Windows XP
Test Program	3DMARK 2003

## Test Result:

<b>Voltae</b>	<b>Current ( A )</b>	<b>Power ( W )</b>	<b>Remark</b>
<b>5V</b>	3.86	19.3	
<b>12V</b>	2.05	24.6	
<b>3.3V</b>	1.22	4.026	



**6.Test Environment:**

CPU	Intel / MEROM T5600/1.83 GHZ
Memory	Adata DDRII 667 1GB (Adata E5108AB-6E-E)*2
HDD1	Seagate ST380011A 80G
HDD2	Seagate ST3250620AS 250GB
FDD	SONY MPF920-E
Mini-PCI WLAN	REALTEK RRTL8180L
CDROM	4KUS DVD COB-6V5216
Test OS	Windows XP
Test Program	3DMARK 2003

**Test Result:**

<b>Voltae</b>	<b>Current ( A )</b>	<b>Power ( W )</b>	<b>Remark</b>
<b>5V</b>	3.93	19.65	
<b>12V</b>	2.05	24.6	
<b>3.3V</b>	0.86	28.38	

## 7.Test Environment:

CPU	Intel / MEROM T5600/1.83 GHZ
Memory	Adata DDRII 667 1GB (Adata E5108AB-6E-E)*2
17" PANEL	AU ME701G01
HDD1	Seagate ST380011A 80G
HDD2	Seagate ST3250620AS 250GB
FDD	SONY MPF920-E
Mini-PCI WLAN	REALTEK RRTL8180L
CDROM	4KUS DVD COB-6V5216
Test OS	Windows XP
Test Program	3DMARK 2003

## Test Result:

<b>Voltae</b>	<b>Current ( A )</b>	<b>Power ( W )</b>	<b>Remark</b>
<b>5V</b>	4.96	24.8	
<b>12V</b>	3.79	45.48	
<b>3.3V</b>	0.83	2.739	

## 4.2 Thermal measurements at various points on the board

### Test Environment A:

CPU	Intel / MEROM T5600/1.83 GHZ
Memory	Adata DDRII 667 1GB (Adata E5108AB-6E-E)*2
HDD	Seagate ST380011A 80G
17" PANEL	AU ME701G01
CDROM	4KUS DVD COB-6V5216
Test Program	3DMark 2003

### Test Result:

CPU	42.4
NB	46.9
SB	45.1
U9	50.7
U6	43.8
U4	40.8
Q19	42

**Test Environment B:**

CPU	Intel / MEROM T5600/1.83 GHZ
Memory	Adata DDRII 667 1GB (Adata E5108AB-6E-E)*2
HDD	Seagate ST380011A 80G
17" PANEL	AU ME701G01
CDROM	4KUS DVD COB-6V5216
Test Program	Multimedia Content Creation Winstone 2004

**Test Result:**

CPU	36.9
NB	37.1
SB	39.6
U3	36.2
U6	38.4
U4	35.4
Q19	36.3

## 5. Performance Test

### 5.1 Content Creation WinStone 2001

#### 1.Windows XP

WEIGHTED SUITE	Test Environment	Result	Remark
<b>Content Creation Winstone 2001</b>	I Intel /2M/ 2.16 GHZ Kingstone DDRII 533 1GB (Hynix HY5PS12821) Maxtor Diamondmax 160GB	PASS	121.7
			123.1
			122.3
			120.2
			121.7
<b>Content Creation Winstone 2001</b>	Intel /1M/ 1.46GHZ Rdata DDRII 667 1GB (Rdata AD29608A8A -3EG) Rdata DDRII 667 1GB (Rdata AD29608A8A -3EG) Western Digital WD1600 160GB (SATA)		104.9
			104.2
			103.5
			103.5
			103.7
<b>Content Creation Winstone 2001</b>	Intel / MEROM T5600/1.83 GHZ Adata DDRII 667 1GB (Adata E5108AB-6E-E) Adata DDRII 667 1GB (Adata E5108AB-6E-E) Seagate ST380011A 80G		114.9
			117.1
			119
			116.9
			115.6

## 2.Windows Server 2003

<b>WEIGHTED SUITE</b>	<b>Test Environment</b>	<b>Result</b>	<b>Remark</b>
<b>Content Creation Winstone 2001</b>	Intel / MEROM T5600/1.83 GHZ Adata DDRII 667 1GB (Adata E5108AB-6E-E) Adata DDRII 667 1GB (Adata E5108AB-6E-E) Seagate ST380011A 80G		111.1 107.1 112 144 104.3

## 5.2 Business WinStone 2004

### 1.Windows XP

WEIGHTED SUITE	Test Environment	Result	Remark
<b>Business WinStone 2004</b>	Intel /2M/ 2.16 GHZ Kingstone DDRII 533 1GB (Hynix HY5PS12821) ADATA DDRII 533512MB (ELPADI E5108AB-5C-E) Maxtor Diamondmax 160GB		12.3 11.6 19.9 16.5
<b>Business WinStone 2004</b>	Intel /1M/ 1.46GHZ Rdata DDRII 667 1GB (Rdata AD29608A8A -3EG) Rdata DDRII 667 1GB (Rdata AD29608A8A -3EG) Western Digital WD1600 160GB (SATA)		19.3 19.3 19.5
<b>Business WinStone 2004</b>	Intel / MEROM T5600/1.83 GHZ Adata DDRII 667 1GB (Adata E5108AB-6E-E) Adata DDRII 667 1GB (Adata E5108AB-6E-E) Seagate ST380011A 80G	PASS	19.2 16.8 20.4 19.5

## 2.Windows Server 2003

<b>WEIGHTED SUITE</b>	<b>Test Environment</b>	<b>Result</b>	<b>Remark</b>
<b>Business WinStone 2004</b>	Intel / MEROM T5600/1.83 GHZ	PASS	
	Adata DDRII 667 1GB (Adata E5108AB-6E-E)		23
	Adata DDRII 667 1GB (Adata E5108AB-6E-E)		18.6
	Seagate ST380011A 80G		23.4
			23.3

## 5.3 Multimedia Content Creation Winstone 2003

### 2.Windows Server 2003

<b>WEIGHTED SUITE</b>	<b>Test Environment</b>	<b>Result</b>	<b>Remark</b>
<b>Multimedia Content Creation Winstone 2003</b>	Intel /2M/ 1.83 GHZ		
	Kingston DDRII 533 1GB (hyinx HY5PS12821)		32.8
	Rdata DDRII 667 1GB (Rdata AD29608A8A -3EG)		32.6
	Western Digital WD3000JS 300GB (SATA)		32.7
			32.7
			32.6



## 5.4 Multimedia Content Creation Winstone 2004

### 1.Windows XP

<b>0WEIGHTED SUITE</b>	<b>Test Environment</b>	<b>Result</b>	<b>Remark</b>
<b>Multimedia Content Creation Winstone 2004</b>	Intel / MEROM T5600/1.83 GHZ	PASS	31
	Adata DDRII 667 1GB (Adata E5108AB-6E-E)		29
	Adata DDRII 667 1GB (Adata E5108AB-6E-E)		31.4
	Seagate ST380011A 80G		26.9
<b>Multimedia Content Creation Winstone 2004</b>	Intel /2M/ 2.16 GHZ	Pass	36.5
	Kingstone DDRII 533 1GB (Hynix HY5PS12821)		36.6
	ADATA DDRII 533512MB (ELPADI E5108AB-5C-E)		36.9
	Maxtor Diamondmax 160GB		36.6

### 2.Windows Server 2003

<b>WEIGHTED SUITE</b>	<b>Test Environment</b>	<b>Result</b>	<b>Remark</b>
<b>Multimedia Content Creation Winstone 2004</b>	Intel / MEROM T5600/1.83 GHZ	PASS	34.9
	Adata DDRII 667 1GB (Adata E5108AB-6E-E)		34.9
	Adata DDRII 667 1GB (Adata E5108AB-6E-E)		34.9
	Seagate ST380011A 80G		34.8
			34.8

## 5.5 3D MARK

<b>Test Environment</b>
Intel T7400/2.16 GHZ Kingstone DDRII 533 1GB (Hynix HY5PS12821) Maxtor Diamondmax 160GB

### Windows XP

<b>Item</b>	<b>WEIGHTED SUITE</b>	<b>Result</b>	<b>Remark</b>
1	3DMARK2003 Scores	Pass	1078
2	3DMARK2005 Scores	Pass	400
3	3DMARK2006 Scores	Pass	113

<b>Test Environment</b>
Intel / MEROM T5600/1.83 GHZ Adata DDRII 667 1GB (Adata E5108AB-6E-E) Adata DDRII 667 1GB (Adata E5108AB-6E-E) Seagate ST380011A 80G

### Windows XP

<b>Item</b>	<b>WEIGHTED SUITE</b>	<b>Result</b>	<b>Remark</b>
1	3DMARK2003 Scores	Pass	1209
2	3DMARK2005 Scores	Pass	484
3	3DMARK2006 Scores	Pass	146

## 5.6 PCMARK 2002

<b>Test Environment</b>
Intel T7400 2.16 GHZ Kingstone DDRII 533 1GB (Hynix HY5PS12821) Maxtor Diamondmax 160GB

### Windows XP

<b>Item</b>	<b>WEIGHTED SUITE</b>	<b>Result</b>	<b>Remark</b>
1	CPU test Source	Pass	8518
2	Memory test Source	Pass	26579
3	HDD test Source	Pass	965

<b>Test Environment</b>
Intel / MEROM T5600/1.83 GHZ Adata DDRII 667 1GB (Adata E5108AB-6E-E) Adata DDRII 667 1GB (Adata E5108AB-6E-E) Seagate ST380011A 80G

### Windows XP

<b>Item</b>	<b>WEIGHTED SUITE</b>	<b>Result</b>	<b>Remark</b>
1	CPU test Source	PASS	7231
2	Memory test Source	PASS	15474
3	HDD test Source	PASS	1171

## 5.7 PCMARK 2004

<b>Test Environment</b>
Intel T7400 2.16 GHZ Kingstone DDRII 533 1GB (Hynix HY5PS12821) Maxtor Diamondmax 160GB

### Windows XP

<b>Item</b>	<b>WEIGHTED SUITE</b>	<b>Result</b>	<b>Remark</b>
1	System test Source	PASS	6141
2	CPU test Source	PASS	N/A
3	Memory test Source	PASS	6591
4	Graphic test Source	PASS	726
5	HDD test Source	PASS	2894
<b>Test Environment</b>			
Intel / MEROM T5600/1.83 GHZ Adata DDRII 667 1GB (Adata E5108AB-6E-E) Adata DDRII 667 1GB (Adata E5108AB-6E-E) Seagate ST380011A 80G			

### Windows XP

<b>Item</b>	<b>WEIGHTED SUITE</b>	<b>Result</b>	<b>Remark</b>
1	System test Score	PASS	5439
2	CPU test Score	PASS	6203
3	Memory test Score	PASS	4832
4	Graphic test Score	PASS	796
5	HDD test Score	PASS	3404

## 5.8 PCMARK 2005

<b>Test Environment</b>
Intel T7400 2.16 GHZ Kingstone DDRII 533 1GB (Hynix HY5PS12821) Maxtor Diamondmax 160GB

### Windows XP

<b>Item</b>	<b>WEIGHTED SUITE</b>	<b>Result</b>	<b>Remark</b>
1	System test Source	PASS	3463
2	CPU test Source	PASS	5526
3	Memory test Source	PASS	4073
4	Graphic test Source	PASS	906
5	HDD test Source	PASS	3458

<b>Test Environment</b>
Intel / MEROM T5600/1.83 GHZ Adata DDRII 667 1GB (Adata E5108AB-6E-E) Adata DDRII 667 1GB (Adata E5108AB-6E-E) Seagate ST380011A 80G

### Windows XP

<b>Item</b>	<b>WEIGHTED SUITE</b>	<b>Result</b>	<b>Remark</b>
1	System test Source	PASS	3178
2	CPU test Source	PASS	4707
3	Memory test Source	PASS	3708
4	Graphic test Source	PASS	979
5	HDD test Source	PASS	3777

