

PMSA
Test Report
Edition 1.01
2008/03/06



Test Engineer :Borlin

Identify:

Index

Index	2
1.Function test	4
1.1Hardware function	4
1.2 BIOS function	6
1.3 Driver.....	8
2. Compatibility test	9
2.1 CPU Test	9
2.2 Memory Test.....	13
2.3 VGA Graphic Test.....	14
2.4 Audio Test.....	15
2.5 HDD Test	17
2.6 USB Test	21
2.7 Serial Port Test	21
2.8 IrDA Test.....	22
2.9 Keyboard Test	23
2.10 Mouse Test.....	24
2.11 LAN Module Test	25
2.12 Power Supply Test.....	26
4. Linux "Suse 10.0"	26
2.13 CD-ROM Test	27
2.14 Floppy Drive Test.....	33
2.15 Printer Port Test.....	35
2.16 Boot Up Test.....	36
2.17 Os Install	36
3. Environmental test.....	37
3.1 Temperature Test.....	37
4. Reliability Test.....	38
4.1 Power Consumption Test	38
4.2 Thermal measurements at various points on the board.....	41

5. Performance Test	43
5.1 Content Creation WinStone 2001	錯誤! 尙未定義書籤。
5.2 Business WinStone 2004	43
5.3 Multimedia Content Creation Winstone 2003	錯誤! 尙未定義書籤。
5.4 Multimedia Content Creation Winstone 2004	錯誤! 尙未定義書籤。
5.5 3D MARK	44
5.6 PCMARK 2002	45
5.7 PCMARK 2004	47
Windows XP	47
5.8 PCMARK 2005	48

1.Function test

1.1Hardware function

Base Function Test

1	Power Button	PASS
2	Reset	PASS
3	Power LED	PASS
4	HDD LED	PASS
5	IDE Primary Master	PASS
6	IDE Primary Slave	PASS
7	IDE Secondary Master	PASS
8	IDE Secondary Slave	PASS
9	Floppy	PASS
10	Compact Flash	PASS
11	DIMM	PASS
12	VGA Port	PASS
13	Keyboard	PASS
14	Mouse	PASS
15	AUDIO Port	PASS
16	COM 1	PASS
17	COM 2	PASS
18	COM3	PASS
19	COM4	PASS
20	COM5	PASS
21	COM6	PASS
20	Printer Port	PASS
21	IRDA	PASS
22	SYSFAN	PASS
23	CPUFAN	PASS

24	MINI PCI	PASS
25	PCIE 16X	PASS
26	PCIE 1X	PASS
27	CF	PASS
28	TV OUT	PASS
29	ISA Slot	PASS
30	CN_AUDIO	PASS
31	PCI1	PASS
32	PCI2	PASS
33	CN_SPDIFOUT	PASS
34	CN_AUDIO	PASS
35	LVDS	PASS
36	1394_1	PASS
37	1394_2	PASS

2.0 PITCH (DIP)

1	JRTC	PASS
2	JVLCD	PASS
3	JCFSEL	PASS
5	JCSEL 1/2	PASS

1.2 BIOS function

Item	Description	Result	Remark
1	Press 'Del' to run Setup Utility	PASS	
2	Ctrl-Alt-Del – Soft-Reboot	PASS	
3	Save & Exit Setup	PASS	
4	Date & Time Setting	PASS	
5	Drive A	PASS	
6	Audio Function	PASS	
7	Quick Power On Self Test	PASS	
8	Boot Device Setting	PASS	
9	Boot Up Floppy Seek	PASS	
10	Boot Up Num Lock Status	PASS	
11	Boot Display	PASS	
12	Panel Number	PASS	
13	On Chip Primary IDE	PASS	
14	On Chip Secondary IDE	PASS	
15	ACPI Suspend Type	PASS	
16	Onboard Lan Boot ROM	PASS	
17	Onboard Serial Port	PASS	
18	USB Controller	PASS	
19	USB Keyboard Support	PASS	
20	USB Mouse Support	PASS	
21	Onboard FDC Controller	Pass	
22	Soft-Off by PWRBTN	PASS	
23	Power On Function	PASS	
24	PS2MS Wakeup from S3 /S4 /S5	PASS	
25	PS2KB Wakeup from S3 /S4 /S5	PASS	
26	ACPI Function	PASS	

27	Wake-Up On LAN	PASS	
28	Resume by Alarm	PASS	
29	Watching Dog Timer Select	PASS	
30	Init Display First	PASS	
31	Onboard Parallel Port	PASS	
32	PWRON After PWR-Fail	PASS	
33	Power On by Ring	PASS	
34	Onboard LAN1 control	PASS	
35	Onboard LAN2 control	PASS	
36	UART Mode Select	PASS	
37	RxD , Txd Active	PASS	
38	IR Transmission Delay	PASS	
39	UR2 duplex Mode	PASS	
40	Use IR Pins	PASS	
41	CPU THRM-Throttling	PASS	
42	Wake-up by PCI card	PASS	
43	USB KB Wake-up From S3	PASS	
44	Wake-Up by PCI Card	PASS	

1.3 Driver

1. Windows XP SP2 Driver Test

	Description	Result	Remark
1	Chip set Driver	PASS	
2	VGA Driver	PASS	
3	Audio Driver	PASS	
4	LAN Driver	PASS	

1. Windows Vista 32bit Driver Test

	Description	Result	Remark
1	Chip set Driver	PASS	
2	VGA Driver	PASS	
3	Audio Driver	PASS	
4	LAN Driver	PASS	

2. Compatibility test

2.1 CPU Test

Processor: Intel T7700 2.4GHZ

O.S: MS-DOS 6.22

Item	Description	Result	Remark
1	CPU Type Detect	PASS	
2	CPU Speed Detect	PASS	
3	OS Running Stability	PASS	

Windows 2003 Server

Item	Description	Result	Remark
1	CPU Type Detect	PASS	
2	CPU Speed Detect	PASS	
3	OS Running Stability	PASS	

Windows XP

Item	Description	Result	Remark
1	CPU Type Detect	PASS	
2	CPU Speed Detect	PASS	
3	OS Running Stability	PASS	

Processor: Intel T7500 2.2GHZ

O.S: MS-DOS 6.22

Item	Description	Result	Remark
1	CPU Type Detect	PASS	
2	CPU Speed Detect	PASS	
3	OS Running Stability	PASS	

Windows 2003 Server

Item	Description	Result	Remark
1	CPU Type Detect	PASS	
2	CPU Speed Detect	PASS	
3	OS Running Stability	PASS	

Windows XP

Item	Description	Result	Remark
1	CPU Type Detect	PASS	
2	CPU Speed Detect	PASS	
3	OS Running Stability	PASS	

Processor: Intel T7300 2GHZ

O.S: MS-DOS 6.22

Item	Description	Result	Remark
1	CPU Type Detect	PASS	
2	CPU Speed Detect	PASS	
3	OS Running Stability	PASS	

Windows 2003 Server

Item	Description	Result	Remark
1	CPU Type Detect	PASS	
2	CPU Speed Detect	PASS	
3	OS Running Stability	PASS	

Windows XP

Item	Description	Result	Remark
1	CPU Type Detect	PASS	
2	CPU Speed Detect	PASS	
3	OS Running Stability	PASS	

Processor: Intel T7100 1.86GHZ

O.S: MS-DOS 6.22

Item	Description	Result	Remark
1	CPU Type Detect	PASS	
2	CPU Speed Detect	PASS	
3	OS Running Stability	PASS	

Windows 2003 Server

Item	Description	Result	Remark
1	CPU Type Detect	PASS	
2	CPU Speed Detect	PASS	
3	OS Running Stability	PASS	

Windows XP

Item	Description	Result	Remark
1	CPU Type Detect	PASS	
2	CPU Speed Detect	PASS	
3	OS Running Stability	PASS	

2.2 Memory Test

1. Transcend DDRII 667 2G (PSC A3R1GE3CFF)

Item	Description	Result	Remark
1	Boot	PASS	
2	MS-DOS 6.22	PASS	
3	Windows 2003 Server	PASS	
4	Windows XP	PASS	

2. ADATA DDRII 667 1GB (HYNIX HY5PS1G831C)

Item	Description	Result	Remark
1	Boot	PASS	
2	MS-DOS 6.22	PASS	
3	Windows 2003 Server	PASS	
4	Windows XP	PASS	

3. GREENCOM DDRII 533 1G(ELPIDA E5108AE-6E-E)

Item	Description	Result	Remark
1	Boot	PASS	
2	MS-DOS 6.22	PASS	
3	Windows 2003 Server	PASS	
4	Windows XP	PASS	

4. PQI DDRII 667 2GB (7QE22 D9HNL)

Item	Description	Result	Remark
1	Boot	PASS	
2	MS-DOS 6.22	PASS	
3	Windows 2003 Server	PASS	
4	Windows XP	PASS	

2.3 VGA Graphic Test

1. Windows XP

Item	Description	Result	Remark
1	Driver Install	PASS	
2	Resolution/Color Change	PASS	
3	Dual View Test	PASS	With LVDS LCD PANEL
4	CRT Display Test	PASS	
5	CRT Display Quality Test	PASS	

2. Windows Vista 32bit

Item	Description	Result	Remark
1	Driver Install	PASS	
2	Resolution/Color Change	PASS	
3	Dual View Test	PASS	With LVDS LCD PANEL
4	CRT Display Test	PASS	
5	CRT Display Quality Test	PASS	

2.4 Audio Test

1. Windows 2003 Server

Item	Description	Result	Remark
1	Driver Install	PASS	
2	Speaker Left	PASS	
3	Speaker Right	PASS	
4	Sound Effect	PASS	
5	Equalizer	PASS	
6	Microphone	PASS	

2. Windows XP

Item	Description	Result	Remark
1	Driver Install	PASS	
2	Speaker Left	PASS	
3	Speaker Right	PASS	
4	Sound Effect	PASS	
5	Equalizer	PASS	
6	Microphone	PASS	

3. Windows Vista 32bit

Item	Description	Result	Remark
1	Driver Install	PASS	
2	Speaker Left	PASS	
3	Speaker Right	PASS	
4	Sound Effect	PASS	
5	Equalizer	PASS	
6	Microphone	PASS	

2.5 HDD Test

Model: Western Digital WD3000JS-22PDB0 300GB(SATA)

1. MS-DOS 6.22

Item	Description	Result	Remark
1	HDD Size Detect	PASS	
2	HDD Read/Write	PASS	
3	HDD Partition/Format	PASS	
4	HDD LED Check	PASS	

2. Windows 2003 Server

Item	Description	Result	Remark
1	HDD Detect	PASS	
2	HDD Read/Write	PASS	
3	HDD Data Transfer	PASS	
4	HDD Format	PASS	
5	HDD LED Check	PASS	

3. Windows XP

Item	Description	Result	Remark
1	HDD Detect	PASS	
2	HDD Read/Write	PASS	
3	HDD Data Transfer	PASS	
4	HDD Format	PASS	
5	HDD LED Check	PASS	

Model: Maxtor Diamondmax Plus 8 40GB

1. MS-DOS 6.22

Item	Description	Result	Remark
1	HDD Size Detect	PASS	
2	HDD Read/Write	PASS	
3	HDD Partition/Format	PASS	
4	HDD LED Check	PASS	

2. Windows 2003 Server

Item	Description	Result	Remark
1	HDD Detect	PASS	
2	HDD Read/Write	PASS	
3	HDD Data Transfer	PASS	
4	HDD Format	PASS	
5	HDD LED Check	PASS	

3. Windows XP

Item	Description	Result	Remark
1	HDD Detect	PASS	
2	HDD Read/Write	PASS	
3	HDD Data Transfer	PASS	
4	HDD Format	PASS	
5	HDD LED Check	PASS	

Model: Western Digital 80GB

1. MS-DOS 6.22

Item	Description	Result	Remark
1	HDD Size Detect	Pass	
2	HDD Read/Write	Pass	
3	HDD Partition/Format	Pass	
4	HDD LED Check	Pass	

2. Windows 2003 Server

Item	Description	Result	Remark
1	HDD Detect	PASS	
2	HDD Read/Write	PASS	
3	HDD Data Transfer	PASS	
4	HDD Format	PASS	
5	HDD LED Check	PASS	

3. Windows XP

Item	Description	Result	Remark
1	HDD Detect	PASS	
2	HDD Read/Write	PASS	
3	HDD Data Transfer	PASS	
4	HDD Format	PASS	
5	HDD LED Check	PASS	

Model: Seagate ST380011A-314 80G

1. MS-DOS 6.22

Item	Description	Result	Remark
1	HDD Size Detect	PASS	
2	HDD Read/Write	PASS	
3	HDD Partition/Format	PASS	
4	HDD LED Check	PASS	

2. Windows 2003 Server

Item	Description	Result	Remark
1	HDD Detect	PASS	
2	HDD Read/Write	PASS	
3	HDD Data Transfer	PASS	
4	HDD Format	PASS	
5	HDD LED Check	PASS	

3. Windows XP

Item	Description	Result	Remark
1	HDD Detect	PASS	
2	HDD Read/Write	PASS	
3	HDD Data Transfer	PASS	
4	HDD Format	PASS	
5	HDD LED Check	PASS	

2.6 USB Test

1. Windows 2003 Server

Item	Description	Result	Remark
1	Device Manager Check	PASS	
2	External USB Keyboard Test	PASS	
3	External USB Mouse Test	PASS	
4	Hot plugging test	PASS	

2. Windows XP

Item	Description	Result	Remark
1	Device Manager Check	PASS	
2	External USB Keyboard Test	PASS	
3	External USB Mouse Test	PASS	
4	Hot plugging test	PASS	

3. Windows Vista 32bit

Item	Description	Result	Remark
1	Device Manager Check	PASS	
2	External USB Keyboard Test	PASS	
3	External USB Mouse Test	PASS	
4	Hot plugging test	PASS	

2.7 Serial Port Test

1. Windows XP

Item	Description	Result	Remark
1	Device Manager Check	PASS	
2	Driver Install	PASS	
3	RS-232 Mouse Test (PNP)	PASS	
4	RS-232 Modem Test (PNP)	PASS	
5	B&B Electronics COM Port RS-232 Test (W/Loop-Back)	PASS	

2.8 IrDA Test

2. Windows XP

Item	Description	Result	Remark
1	Device Manager Check	PASS	
2	SIR Mode Data Transfer Test	PASS	
3	SIR Data Transfer Quality Test	PASS	
4	SIR Loop-Back Test	PASS	

2.9 Keyboard Test

1. MS-DOS 6.22

Item	Description	Result	Remark
1	Keyboard LED Status Test	PASS	
2	Keyboard Command Test	PASS	
3	Keyboard Typing Test	PASS	

3. Windows 2003 Server

Item	Description	Result	Remark
1	Device Manager Check	PASS	
2	Keyboard LED Status Test	PASS	
3	Keyboard Typing Test	PASS	

4. Windows XP

Item	Description	Result	Remark
1	Device Manager Check	PASS	
2	Keyboard LED Status Test	PASS	
3	Keyboard Typing Test	PASS	

6. Linux "Suse 10.3"

Item	Description	Result	Remark
1	Device Manager Check	PASS	
2	Keyboard LED Status Test	PASS	
3	Keyboard Typing Test	PASS	

7. Linux "Fedora Core5"

Item	Description	Result	Remark
1	Device Manager Check	Pass	
2	Keyboard LED Status Test	Pass	
3	Keyboard Typing Test	Pass	

2.10 Mouse Test

1. Windows 2003 Server

Item	Description	Result	Remark
1	Device Manager Check	PASS	
2	Mouse Detect Test (PNP)	PASS	

2. Windows XP

Item	Description	Result	Remark
1	Device Manager Check	PASS	
2	Mouse Detect Test (PNP)	PASS	

3. Windows Vista 32bit

Item	Description	Result	Remark
1	Device Manager Check	PASS	
2	Mouse Detect Test (PNP)	PASS	

4. Linux "Suse 10.0"

Item	Description	Result	Remark
1	Device Manager Check	PASS	
2	Mouse Detect Test (PNP)	PASS	

5. Linux "Fedora Core5"

Item	Description	Result	Remark
1	Device Manager Check	Pass	
2	Mouse Detect Test (PNP)	Pass	

2.11 LAN Module Test

2. Windows XP

Item	Description	Result	Remark
1	LAN Module Install Test	PASS	
2	Driver Install	PASS	
3	Device Manager Check	PASS	
4	Data Transfer Test	PASS	

3. Windows 2003 Server Standard Edition

Item	Description	Result	Remark
1	LAN Module Install Test	PASS	
2	Driver Install	PASS	
3	Device Manager Check	PASS	
4	Data Transfer Test	PASS	

3. Windows Vista 32bit

Item	Description	Result	Remark
1	LAN Module Install Test	PASS	
2	Driver Install	PASS	
3	Device Manager Check	PASS	
4	Data Transfer Test	PASS	

2.12 Power Supply Test

1. MS-DOS 6.22

Item	Description	Verification	
		Result	Remark
1	ATX Power On/Off	PASS	FSP300-60ATV(300W)
2	ATX Power On/Off	PASS	Sea sonic SS-330HB(330W)
3.	ATX Power On/Off	PASS	Seven team ST-300WAP(300W)

2. Windows 2003

Item	Description	Verification	
		Result	Remark
1	ATX Power On/Off	Pass	FSP300-60ATV(300W)
2	ATX Power On/Off	PASS	Sea sonic SS-330HB(330W)
3	ATX Power On/Off	PASS	Seven team ST-300WAP(300W)

3. Windows XP

Item	Description	Verification	
		Result	Remark
1	ATX Power On/Off	Pass	FSP300-60ATV(300W)
2	ATX Power On/Off	PASS	Sea sonic SS-330HB(330W)
3	ATX Power On/Off	PASS	Seven team ST-300WAP(300W)

4. Linux "Suse 10.3"

Item	Description	Verification	
		Result	Remark
1	ATX Power On/Off	Pass	FSP300-60ATV(300W))
2	ATX Power On/Off	PASS	ENH Windmill PRO(315W)
3	ATX Power On/Off	Pass	Seven team ST-300WAP(300W)

5. Linux “Fedora Core5”

Item	Description	Verification	
		Result	Remark
1	ATX Power On/Off	Pass	FSP300-60ATV(300W)
2	ATX Power On/Off	PASS	Sea sonic SS-330HB(330W)
3	ATX Power On/Off	PASS	Seven team ST-300WAP(300W)

2.13 CD-ROM Test

Model:4KUS DVD COB-6V5216

1. MS-DOS 6.22

Item	Description	Result	Remark
1	CD-ROM Detect	PASS	
2	CD-ROM Read	PASS	
3	CD-ROM Bootable	PASS	
4	CD-ROM Data Transfer	PASS	

3. Windows 2003 Server

Item	Description	Result	Remark
1	CD-ROM Detect	PASS	
2	CD-ROM Read	PASS	
3	CD-ROM Data Transfer	PASS	

4. Windows XP

Item	Description	Result	Remark
1	CD-ROM Detect	PASS	
2	CD-ROM Read	PASS	
3	CD-ROM Data Transfer	PASS	

Model: ASUS CD-S400/A**1. MS-DOS 6.22**

Item	Description	Result	Remark
1	CD-ROM Detect	PASS	
2	CD-ROM Read	PASS	
3	CD-ROM Bootable	PASS	
4	CD-ROM Data Transfer	PASS	

2. Windows 2003 Server

Item	Description	Result	Remark
1	CD-ROM Detect	PASS	
2	CD-ROM Read	PASS	
3	CD-ROM Data Transfer	PASS	

3. Windows XP

Item	Description	Result	Remark
1	CD-ROM Detect	PASS	
2	CD-ROM Read	PASS	
3	CD-ROM Data Transfer	PASS	

Model: BTC LCD-5200S**1. MS-DOS 6.22**

Item	Description	Result	Remark
1	CD-ROM Detect	PASS	
2	CD-ROM Read	PASS	
3	CD-ROM Bootable	PASS	
4	CD-ROM Data Transfer	PASS	

2. Windows 2003 Server

Item	Description	Result	Remark
1	CD-ROM Detect	PASS	
2	CD-ROM Read	PASS	
3	CD-ROM Data Transfer	PASS	

3. Windows XP

Item	Description	Result	Remark
1	CD-ROM Detect	PASS	
2	CD-ROM Read	PASS	
3	CD-ROM Data Transfer	PASS	

Model: TEAC CD-532E

1. MS-DOS 6.22

Item	Description	Result	Remark
1	CD-ROM Detect	PASS	
2	CD-ROM Read	PASS	
3	CD-ROM Bootable	PASS	
4	CD-ROM Data Transfer	PASS	

2. Windows 2003 Server

Item	Description	Result	Remark
1	CD-ROM Detect	PASS	
2	CD-ROM Read	PASS	
3	CD-ROM Data Transfer	PASS	

3. Windows XP

Item	Description	Result	Remark
1	CD-ROM Detect	PASS	
2	CD-ROM Read	PASS	
3	CD-ROM Data Transfer	PASS	

Model: TEAC CD-540E

1. MS-DOS 6.22

Item	Description	Result	Remark
1	CD-ROM Detect	PASS	
2	CD-ROM Read	PASS	
3	CD-ROM Bootable	PASS	
4	CD-ROM Data Transfer	PASS	

2. Windows 2003 Server

Item	Description	Result	Remark
1	CD-ROM Detect	PASS	
2	CD-ROM Read	PASS	
3	CD-ROM Data Transfer	PASS	

3. Windows XP

Item	Description	Result	Remark
1	CD-ROM Detect	PASS	
2	CD-ROM Read	PASS	
3	CD-ROM Data Transfer	PASS	

4. Windows Vista 32bit

Item	Description	Result	Remark
1	CD-ROM Detect	PASS	
2	CD-ROM Read	PASS	
3	CD-ROM Data Transfer	PASS	

Model: BENQ CB523C

1. MS-DOS 6.22

Item	Description	Result	Remark
1	CD-ROM Detect	PASS	
2	CD-ROM Read	PASS	
3	CD-ROM Bootable	PASS	
4	CD-ROM Data Transfer	PASS	

2. Windows 2003 Server

Item	Description	Result	Remark
1	CD-ROM Detect	PASS	
2	CD-ROM Read	PASS	
3	CD-ROM Data Transfer	PASS	

3. Windows XP

Item	Description	Result	Remark
1	CD-ROM Detect	PASS	
2	CD-ROM Read	PASS	
3	CD-ROM Data Transfer	PASS	

4. Windows Vista 32bit

Item	Description	Result	Remark
1	CD-ROM Detect	PASS	
2	CD-ROM Read	PASS	
3	CD-ROM Data Transfer	PASS	

Model: SYNEX COM-5216

1. MS-DOS 6.22

Item	Description	Result	Remark
1	CD-ROM Detect	PASS	
2	CD-ROM Read	PASS	
3	CD-ROM Bootable	PASS	
4	CD-ROM Data Transfer	PASS	

2. Windows 2003 Server

Item	Description	Result	Remark
1	CD-ROM Detect	PASS	
2	CD-ROM Read	PASS	
3	CD-ROM Data Transfer	PASS	

3. Windows XP

Item	Description	Result	Remark
1	CD-ROM Detect	PASS	
2	CD-ROM Read	PASS	
3	CD-ROM Data Transfer	PASS	

3. Windows Vista 32bit

Item	Description	Result	Remark
1	CD-ROM Detect	PASS	
2	CD-ROM Read	PASS	
3	CD-ROM Data Transfer	PASS	

2.14 Floppy Drive Test

Model: TEAC FD-05HG

1. MS-DOS 6.22

Item	Description	Result	Remark
1	Floppy Drive Detect	Pass	
2	Floppy Read/Write	PASS	
3	Boot from Floppy	Pass	
4	Floppy Data Transfer	PASS	

2. Windows 2003 Server

Item	Description	Result	Remark
1	Floppy Drive Detect	PASS	
2	Floppy Read/Write	PASS	
3	Floppy Data Transfer	PASS	

3. Windows XP

Item	Description	Result	Remark
1	Floppy Drive Detect	Pass	
2	Floppy Read/Write	Pass	
3	Floppy Data Transfer	Pass	

3. Windows Vista 32bit

Item	Description	Result	Remark
1	Floppy Drive Detect	Pass	
2	Floppy Read/Write	Pass	
3	Floppy Data Transfer	Pass	

Model: MITSUMI D353M3

1. MS-DOS 6.22

Item	Description	Result	Remark
1	Floppy Drive Detect	Pass	
2	Floppy Read/Write	PASS	
3	Boot from Floppy	Pass	
4	Floppy Data Transfer	PASS	

2. Windows 2003 Server

Item	Description	Result	Remark
1	Floppy Drive Detect	PASS	
2	Floppy Read/Write	PASS	
3	Floppy Data Transfer	PASS	

3. Windows XP

Item	Description	Result	Remark
1	Floppy Drive Detect	Pass	
2	Floppy Read/Write	Pass	
3	Floppy Data Transfer	Pass	

3. Windows Vista 32bit

tem	Description	Result	Remark
1	Floppy Drive Detect	Pass	
2	Floppy Read/Write	Pass	
3	Floppy Data Transfer	Pass	

2.15 Printer Port Test

1. Windows XP

Item	Description	Result	Remark
1	ECP/EPP PRINT TEST	PASS	

2. Windows 2003 Server

Item	Description	Result	Remark
1	ECP/EPP PRINT TEST	PASS	

2.16 Boot Up Test

Item	Description	Result	Remark
1	Soft boot from HDD	PASS	
2	Soft boot from CD-ROM	PASS	
3	Reboot test with Win 2003 Server	PASS	
4	Reboot test with Win XP	Pass	

2.17 Os Install

Item	Description	Result	Remark
1	Windows XP SP2	Pass	
2	Linux "Fedora	PASS	
3	Windows 2003 Server Standard Edition	PASS	
4	Linux "Suse 10.3"	PASS	
5	Windows Vista 32bit	PASS	
6	Windows Vista 64bit	PASS	

3. Environmental test

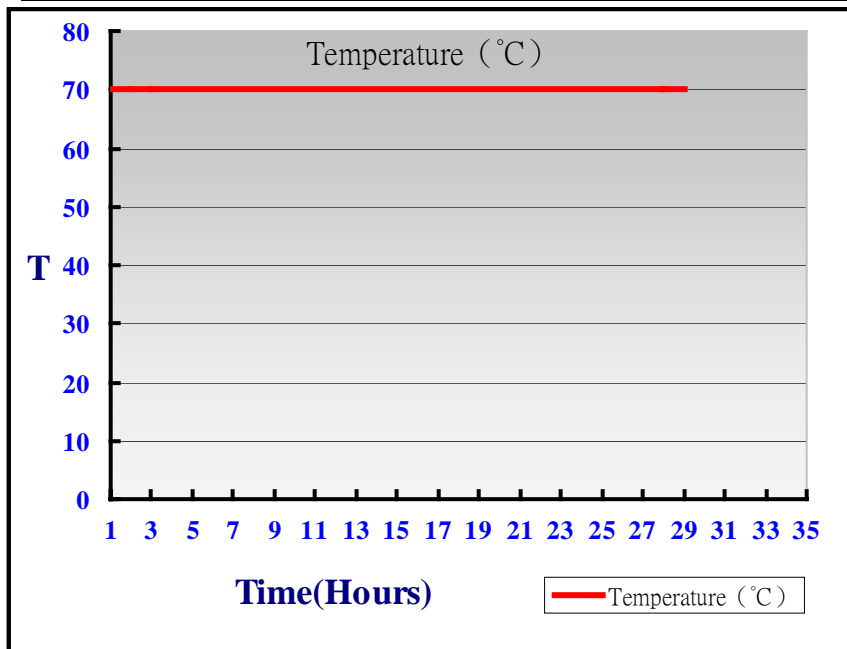
3.1 Temperature Test

Hardware Device list:

System Board	PMCA
CPU	Intel T7700 2.4 GHZ
Memory	Transcend DDRII 800 2G(PSC A3R1GE3CFF)
HDD	Western Digital 80GB
KEYBOARD	KRONE K9810
MOUSE	DCS USBMOUSE
Test Equipment	THERMOTRON 2800 Programmer/Controller
Test Program	BCM

Test Result:

Item	Description	Result	Remark
1	65°C RUN 3Dmark03	Pass	
2	-20°C Boot Test	pass	50 Times
3	70°C Boot Test	PASS	50 Times



4. Reliability Test

4.1 Power Consumption Test

1. Test Environment:

Motherboard	PMSA
CPU	Intel core(TM)2 Duo T7700 2.4G
Memory	Kingston DDR2 533 1GB Kingston DDR2 533 1GB
Power Supply	Sea Sonic SS-330HB

Voltage	Current (A)	Power (W)	Remark
12V	1.87	22.44	Boot Up
5V	2.20	11	
5VSB	0.12	0.6	
3.3V	2.04	6.73	

2. Test Environment:

Motherboard	PMSA
CPU	Intel core(TM)2 Duo T7700 2.4G
Memory	Kingston DDR2 533 1GB Kingston DDR2 533 1GB
HDD	WD WD-2500JB-00GVC0 250G
Power Supply	Sea Sonic SS-330HB
Operating System	Windows XP eng
Test Program	3Dmark 2003

Voltage	Current (A)	Power (W)	Remark
12V	2.68	32.16	
5V	4.17	20.85	
5VSB	0.12	0.6	
3.3V	1.98	6.53	

3. Test Environment:

Motherboard	PMSA
CPU	Intel core(TM)2 Duo T7700 2.4G
Memory	Kingston DDR2 533 1GB Kingston DDR2 533 1GB
HDD	WD WD-2500JB-00GVC0 250G
Power Supply	Sea Sonic SS-330HB
Display	SAMSUNG LTM170EU-L01
Operating System	Windows XP eng
Test Program	3Dmark 2003

Voltage	Current (A)	Power (W)	Remark
12V	4.38	52.56	Boot Up
5V	4.79	23.95	
5VSB	0.15	0.75	
3.3V	2.03	6.69	

4. Test Environment:

Motherboard	PMSA
CPU	Intel core(TM)2 Duo T7100 1.8G
Memory	Kingston DDR2 533 1GB Kingston DDR2 533 1GB
Power Supply	Sea Sonic SS-330HB

Voltage	Current (A)	Power (W)	Remark
12V	1.87	22.44	Boot Up
5V	2.20	11	
5VSB	0.15	0.75	
3.3V	1.96	6.46	

4.2 Thermal measurements at various points on the board

Test Environment A:

CPU	Intel core(TM)2 Duo T7500 2.2G
Memory	ADATA DDRII 667 1GB (HYNIX HY5PS1G831C)*2
HDD	Western Digitar WD2500KS-00MJB0 80G
CDROM	PIONEER DVR-212BK
Test Program	3DMark 2003

Test Result:

CPU	43.4
NB	60.9
SB	53.8
U9	49.6
U7	42.8
U16	57.5
Q23	58.4

Test Environment B:

CPU	Intel core(TM)2 Duo T7500 2.2G
Memory	ADATA DDRII 667 1GB (HYNIX HY5PS1G831C)*2
HDD	Western Digitar WD2500KS-00MJB0 80G
17" PANEL	AU ME701G01
CDROM	4KUS DVD COB-6V5216
Test Program	Multimedia Content Creation Winstone 2004

Test Result:

CPU	47.7
NB	61.1
SB	55.7
U9	46.6
U7	40.9
U16	58.9
Q23	62.1

5. Performance Test

5.1 Business WinStone 2004

1.Windows XP

WEIGHTED SUITE	Test Environment	Result	Remark
Business WinStone 2004	Intel T7700/ 2.4 GHZ		
	ADATA DDRII 667 2GB (Hynix HY5PS1G831C)		17.6 20
	GREENCOM DDRII533 1G (ELPIDA E5108AE-6E-E)		18.3 23.7
	HITACHI HDT722525DLA380 250G		
Business WinStone 2004	Intel T7700/ 2.4 GHZ		
	ADATA DDRII 667 2GB (Hynix HY5PS1G831C)		22 22.5
	GREENCOM DDRII533 1G (ELPIDA E5108AE-6E-E)		16.8 22.6
	HITACHI HDT722525DLA380 250G		
Business WinStone 2004	Intel T7300/ 2.4 GHZ		
	ADATA DDRII 667 2GB (Hynix HY5PS1G831C)		19.2 16.8
	GREENCOM DDRII533 1G (ELPIDA E5108AE-6E-E)		20.4 19.5
	HITACHI HDT722525DLA380 250G		

5.5 3D MARK

Test Environment
Intel T7700/2.4GHZ Greencom DDRII 667 1GB (ELPIDA E5108AGBG) Greencom DDRII 667 1GB(ELPIDA E5108AE-EE-E) Maxtor Diamondmax 250GB

Windows XP

Item	WEIGHTED SUITE	Result	Remark
1	3DMARK2003 Scores	Pass	1469
2	3DMARK2005 Scores	Pass	713
3	3DMARK2006 Scores	Pass	301

Windows Vista 32bit

Item	WEIGHTED SUITE	Result	Remark
1	3DMARK2003 Scores	Pass	1511
2	3DMARK2005 Scores	Pass	761
3	3DMARK2006 Scores	Pass	536

Test Environment
Intel / Celeron 530/1.73 GHZ Greencom DDRII 667 1GB (ELPIDA E5108AGBG) Greencom DDRII 667 1GB (ELPIDA E5108AE-EE-E) Maxtor Diamondmax 250GB

Windows XP

Item	WEIGHTED SUITE	Result	Remark
1	3DMARK2003 Scores	Pass	1317
2	3DMARK2005 Scores	Pass	533
3	3DMARK2006 Scores	Pass	259

Windows Vista 32bit

Item	WEIGHTED SUITE	Result	Remark
1	3DMARK2003 Scores	Pass	1277
2	3DMARK2005 Scores	Pass	615
3	3DMARK2006 Scores	Pass	485

5.6 PCMARK 2002

Test Environment
Intel T7700/2.4GHZ Greencom DDRII 667 1GB (ELPIDA E5108AGBG) Greencom DDRII 667 1GB(ELPIDA E5108AE-EE-E) Maxtor Diamondmax 250GB

Windows XP

Item	WEIGHTED SUITE	Result	Remark
1	CPU test Source	Pass	9462
2	Memory test Source	Pass	29992
3	HDD test Source	Pass	1472

Test Environment
Intel / Celeron 530/1.73 GHZ Greencom DDRII 667 1GB (ELPIDA E5108AGBG) Greencom DDRII 667 1GB (ELPIDA E5108AE-EE-E) Maxtor Diamondmax 250GB

Windows XP

Item	WEIGHTED SUITE	Result	Remark
1	CPU test Source	PASS	6768
2	Memory test Source	PASS	8260
3	HDD test Source	PASS	1471

5.7 PCMARK 2004

Test Environment
Intel T7700/2.4GHZ Greencom DDRII 667 1GB (ELPIDA E5108AGBG) Greencom DDRII 667 1GB(ELPIDA E5108AE-EE-E) Maxtor Diamondmax 250GB

Windows XP

Item	WEIGHTED SUITE	Result	Remark
1	System test Source	PASS	N/A
2	CPU test Source	PASS	N/A
3	Memory test Source	PASS	7511
4	Graphic test Source	PASS	870
5	HDD test Source	PASS	5270

Test Environment
Intel / Celeron 530/1.73 GHZ Greencom DDRII 667 1GB (ELPIDA E5108AGBG) Greencom DDRII 667 1GB (ELPIDA E5108AE-EE-E) Maxtor Diamondmax 250GB

Windows XP

Item	WEIGHTED SUITE	Result	Remark
1	System test Score	PASS	N/A
2	CPU test Score	PASS	N/A
3	Memory test Score	PASS	3990
4	Graphic test Score	PASS	862
5	HDD test Score	PASS	5450

5.8 PCMARK 2005

Test Environment
Intel T7700/2.4GHZ Greencom DDRII 667 1GB (ELPIDA E5108AGBG) Greencom DDRII 667 1GB(ELPIDA E5108AE-EE-E) Maxtor Diamondmax 250GB

Windows XP

Item	WEIGHTED SUITE	Result	Remark
1	System test Source	PASS	N/A
2	CPU test Source	PASS	6133
3	Memory test Source	PASS	4612
4	Graphic test Source	PASS	N/A
5	HDD test Source	PASS	5623

Test Environment

Intel / Celeron 530/1.73 GHZ

Greencom DDRII 667 1GB (ELPIDA E5108AGBG)

Greencom DDRII 667 1GB (ELPIDA E5108AE-EE-E)

Maxtor Diamondmax 250GB

Windows XP

Item	WEIGHTED SUITE	Result	Remark
1	System test Source	PASS	N/A
2	CPU test Source	PASS	3153
3	Memory test Source	PASS	3422
4	Graphic test Source	PASS	N/A
5	HDD test Source	PASS	5790